

990

INDUSTRIAL ROAD

SAN CARLOS, CA

FOR LEASE | ±8,617 TOTAL SF
OFFICE/SHOWROOM SUITES AVAILABLE



NICK WALDSMITH

Senior Associate
+1 650 320 0244
nick.waldsmith@cushwake.com
LIC #02148008

HAILEY WINNEN

Brokerage Specialist
+1 650 401 2109
hailey.winnen@cushwake.com
LIC #02165621



990

INDUSTRIAL ROAD

SAN CARLOS, CA

PROJECT HIGHLIGHTS

Project Highlights

- Rare Industrial/R&D Opportunities
- Short Term options available
- Market Ready Office Space
- Immediate Highway 101 Access
- 1 Mile to San Carlos Caltrain Station

First Floor

Suite 105: ±1,949 SF

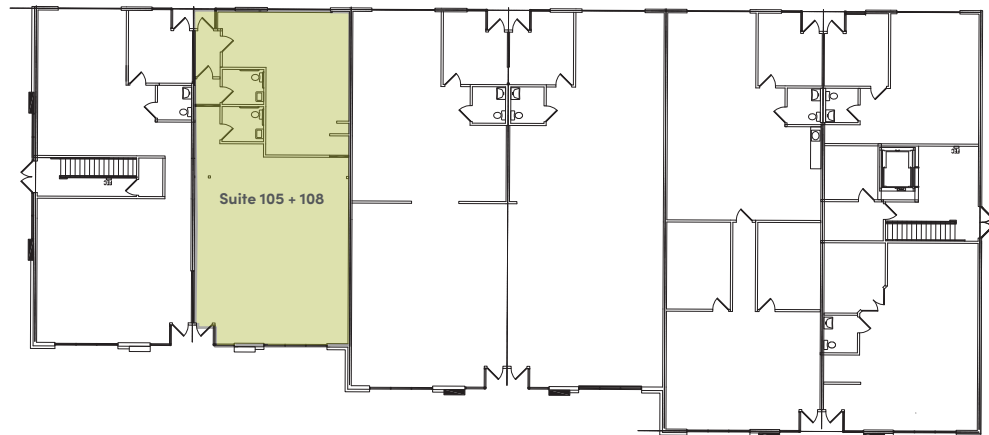
Second Floor

Suite 202: ±1,265 SF

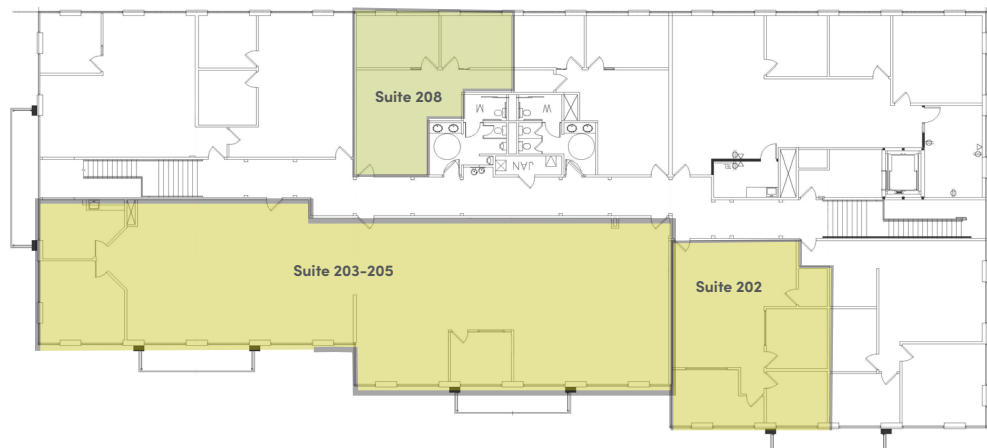
Suite 203-205: ±4,563 SF

Suite 208: ±840 SF

First Floor



Second Floor



990

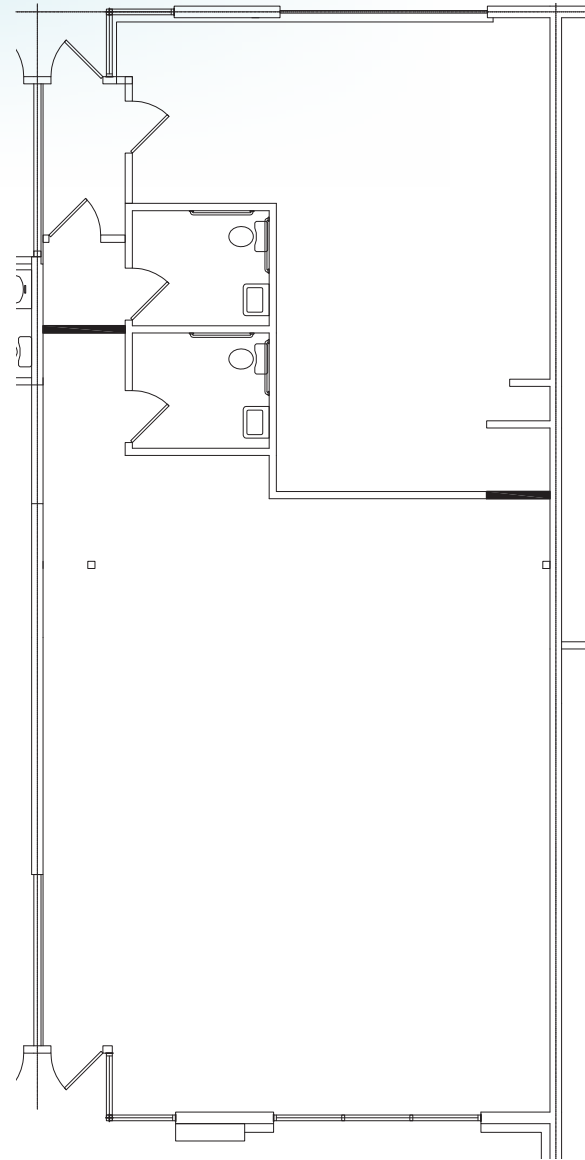
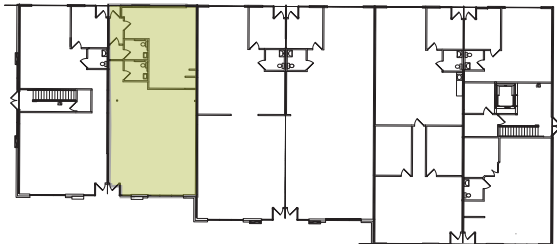
INDUSTRIAL ROAD

SAN CARLOS, CA

Suite 105+108

- Industrial road facing building signage
- ±1,949 SF
- Showroom
- Roll up door
- Open office behind showroom
- Available through 2026
- \$2.25 IG

1ST FLOOR KEY PLAN



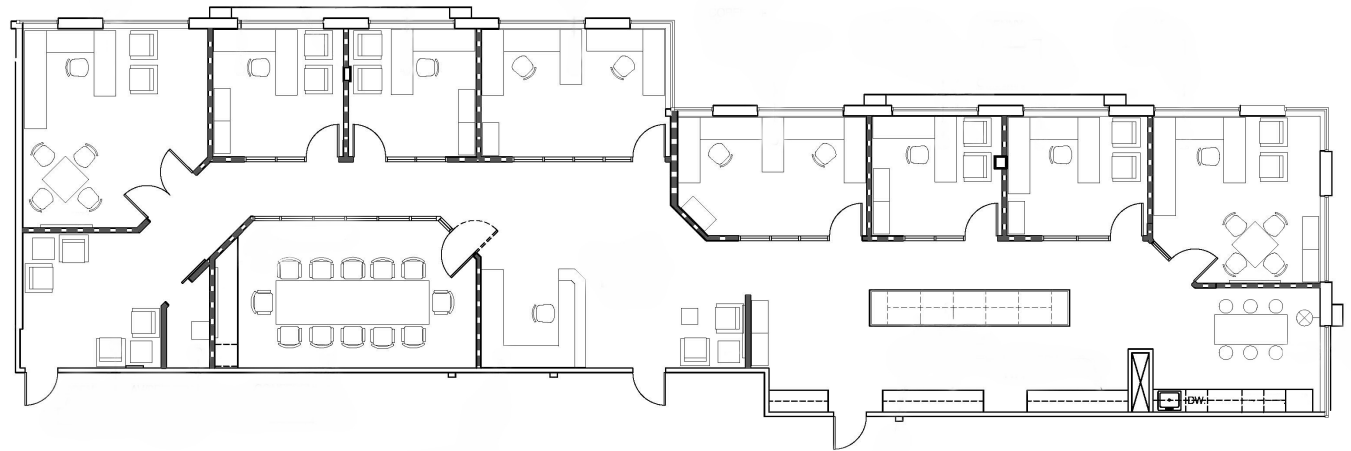
990

INDUSTRIAL ROAD

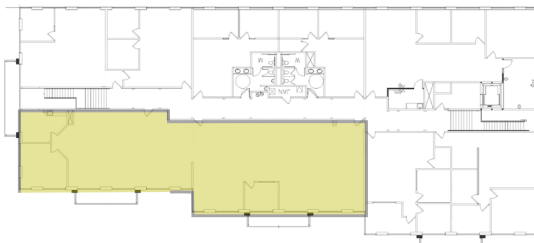
SAN CARLOS, CA

Suite 203-205

- ±4,563 SF
- 8 private offices
- Breakroom
- Conference room
- \$3.50 PSF Per Month/Full Service



2ND FLOOR KEY PLAN



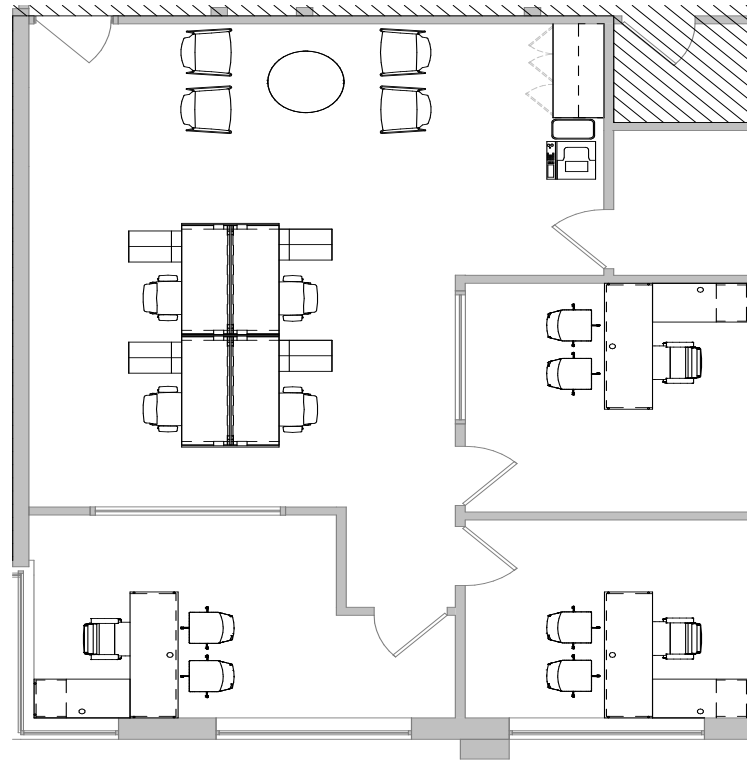
990

INDUSTRIAL ROAD

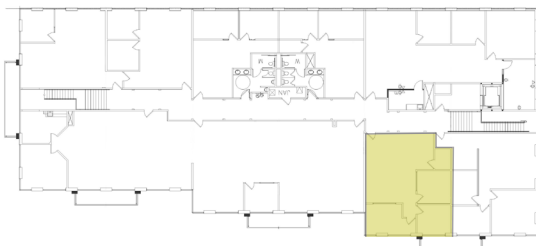
SAN CARLOS, CA

Suite 202

- ±1,265 SF
- 2 private offices
- Large private office
- \$3.50 PSF/Per Month/Full Service



2ND FLOOR KEY PLAN



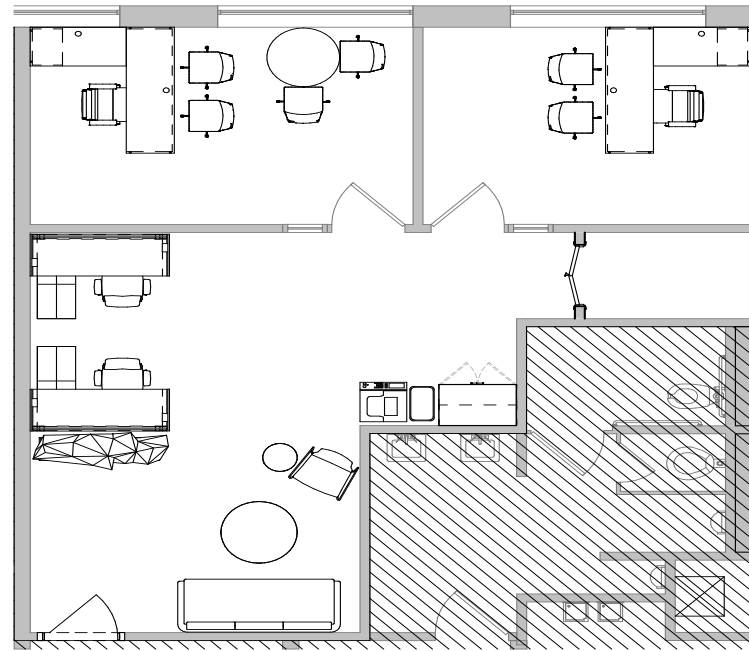
990

INDUSTRIAL ROAD

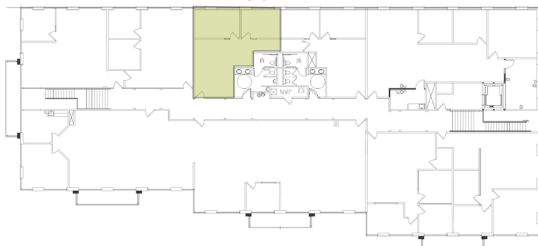
SAN CARLOS, CA

Suite 208

- ±840 SF
- 2 private offices
- Large private office
- \$3.50 PSF/Per Month/Full Service



2ND FLOOR KEY PLAN



990

INDUSTRIAL ROAD

SAN CARLOS, CA

- Located just off 101 in San Carlos
- Close proximity to San Mateo-Hayward and Dumbarton Bridges
- 1 mile to Caltrain San Carlos Station
- 12 miles from San Francisco International Airport
- Close proximity to nearby amenities



990

990

INDUSTRIAL ROAD

SAN CARLOS, CA

NICK WALDSMITH

Senior Associate

+1 650 320 0244

nick.waldsmith@cushwake.com

LIC #02148008

HAILEY WINNEN

Brokerage Specialist

+1 650 401 2109

hailey.winnen@cushwake.com

LIC #02165621

