

THE RESTAURANT  
OPPORTUNITY AT

East 26th  
**IE 26th**

EST 2023

MAISON  
ROUGE

NEW YORK





# The Restaurant Opportunity on Madison Square Park North

Rockrose and Cushman & Wakefield are proud to introduce the restaurant opportunity at 11 East 26th Street, located on the northern edge of Madison Square Park with frontage on 26th and 27th Streets.

## OPPORTUNITY OVERVIEW

6,680 SF

Ground Level

5,605 SF

Lower Level

19'-3"

Slab to Slab (Ground Level)

14'-3"

Slab to Slab (Lower Level)

19'

27th Street Frontage

23'-6"

26th Street Frontage

Q2 2024

Possession



RESTAURANT VIEW FACING MADISON SQUARE PARK





11E 26th

EST 2023

MAISON  
ROUGE

NEW YORK









RESTAURANT INTERIOR









## An Iconic Manhattan Location

11 East 26th is centrally located between Madison & Fifth Avenues on the northern edge of Madison Square Park — making it the true definition of NoMad.







4, 5, 6, N, Q, R, W Trains

5 min walk



40+ Fast Casual Restaurants

5 min walk



30+ Upscale Restaurants

5 min walk



20+ Cafés

5 min walk



20+ Bars

10 min walk



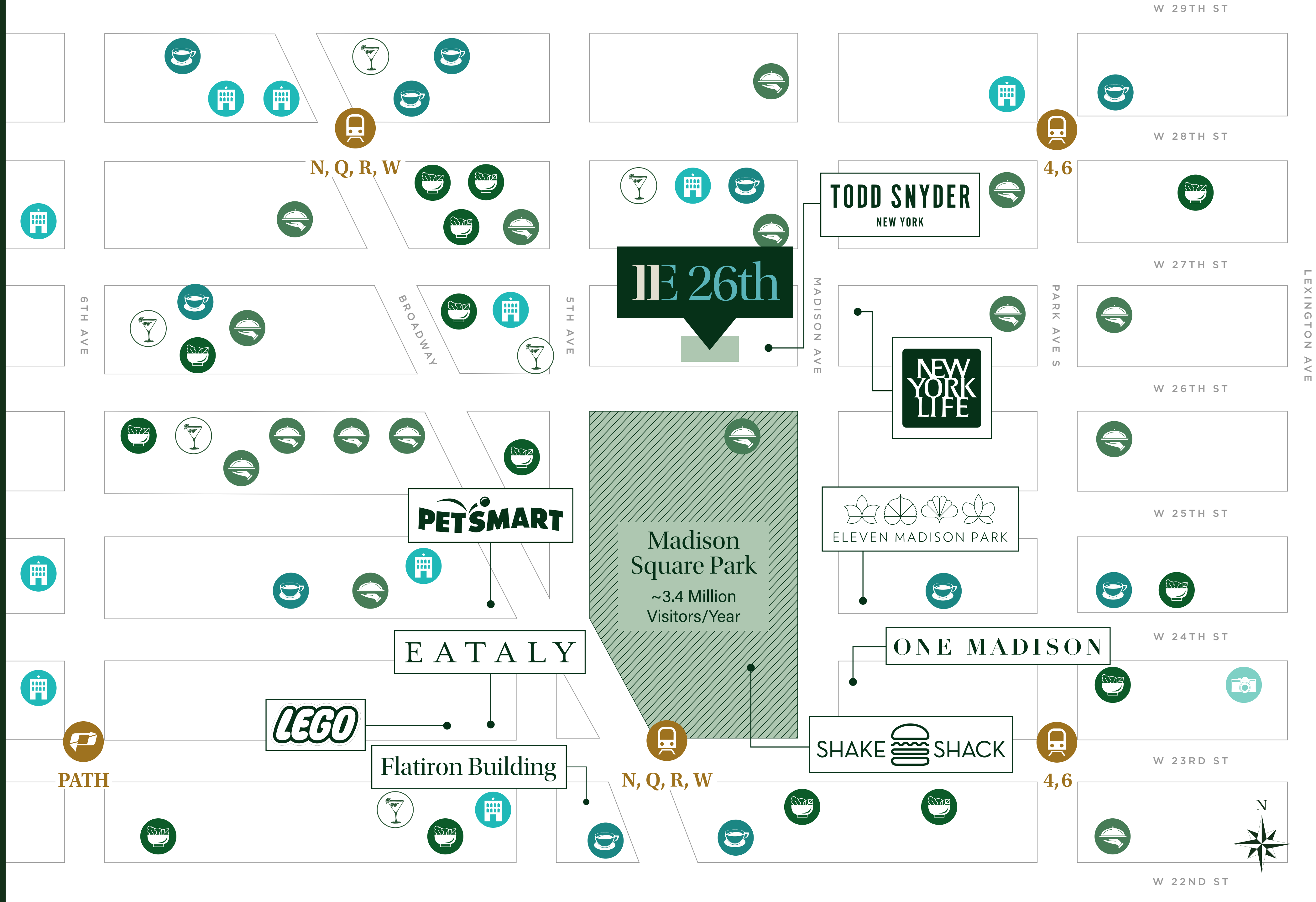
35+ Hotels

10 min walk



5+ Cultural Destinations

10 min walk

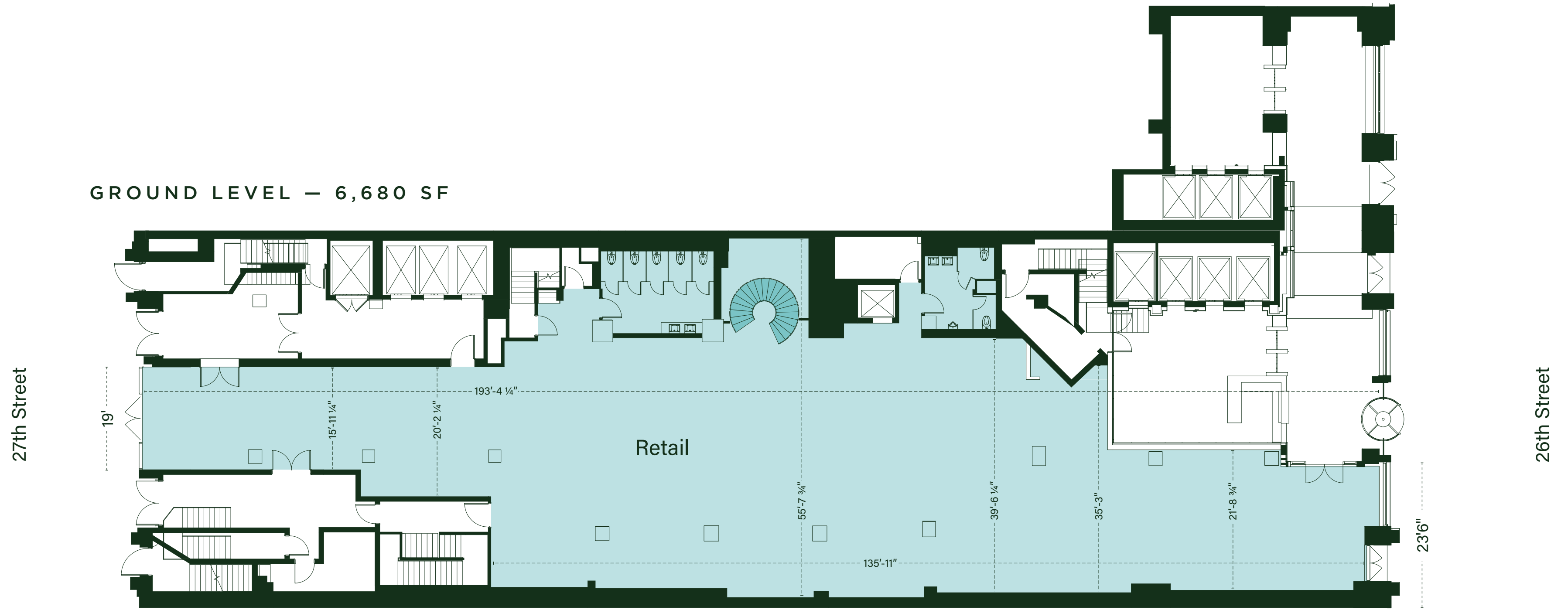




# Floor Plans

12,285 SF

GROUND LEVEL — 6,680 SF



LOWER LEVEL — 5,605 SF







For leasing, please contact:



**MICHAEL O'NEILL**  
*Vice Chairman, Retail Services*

T: 212.841.7909  
michael.oneill@cushwake.com

**TAYLOR REYNOLDS**  
*Senior Director, Retail Services*

T: 212.841.5920  
taylor.reynolds@cushwake.com

**JASON GREENSTONE**  
*Executive Director, Retail Services*

T: 212.841.7713 | M: 201.787.7110  
jason.greenstone@cushwake.com

**LILLY CRAVER**  
*Associate, Retail Services*

T: 212.698.5616  
lilly.craver@cushwake.com



**11E 26th**

11E26TH.COM

