



ONE
S WACKER DR
CHICAGO

For Sublease
6,814 SF

 CUSHMAN &
WAKEFIELD

// SPACE FEATURES



UNIQUE, PLUG-AND-PLAY

OPPORTUNITY DESIGNED WITH POLISHED CONCRETE FLOORS, EXPOSED CEILINGS IN VARIOUS AREAS, AND GLASS OFFICES/ CONFERENCE ROOMS



THE SPACE IS COMPRISED OF APPROXIMATELY 56 WORKSTATIONS, 5 CONFERENCE ROOMS, AND 5 OFFICES



OPEN GALLEY KITCHEN AND COLLABORATION AREAS



DOUBLE DOOR IDENTITY AND IS LOCATED OFF OF THE ELEVATOR LOBBY





// SPACE SPECS

PREMISES
SUITE 2640

AVAILABLE SPACE
6,814 SF

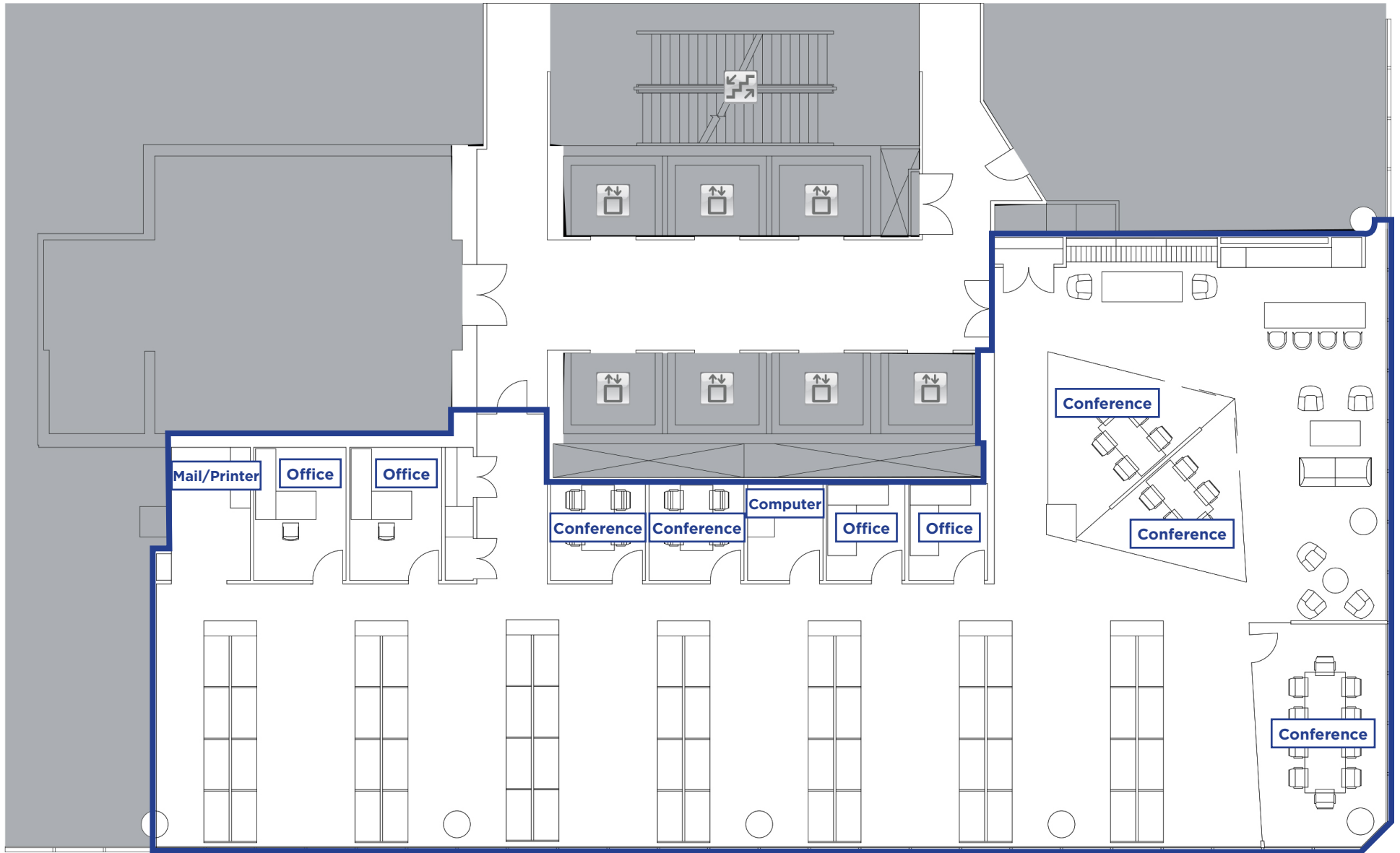
RATE
WITHHELD

TERM
THROUGH MARCH 31, 2026

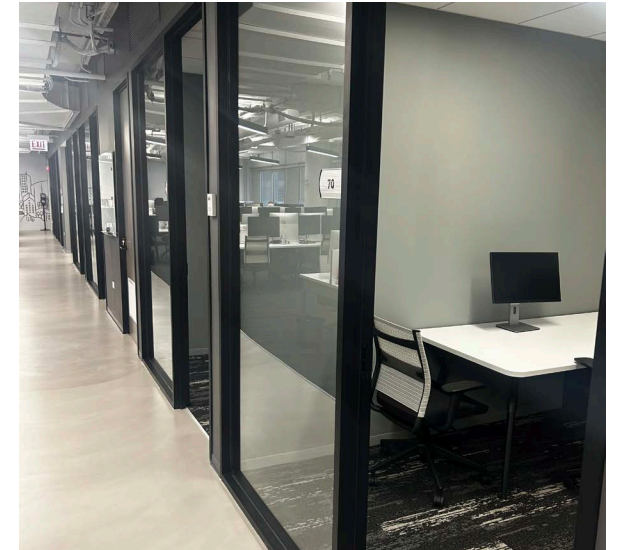
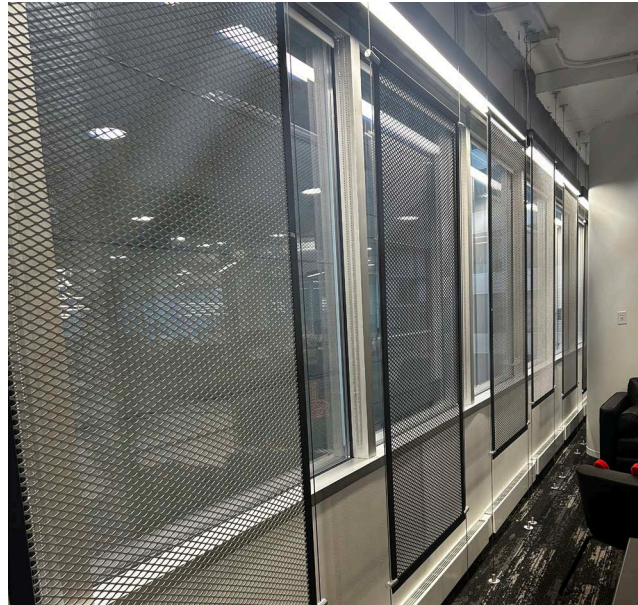
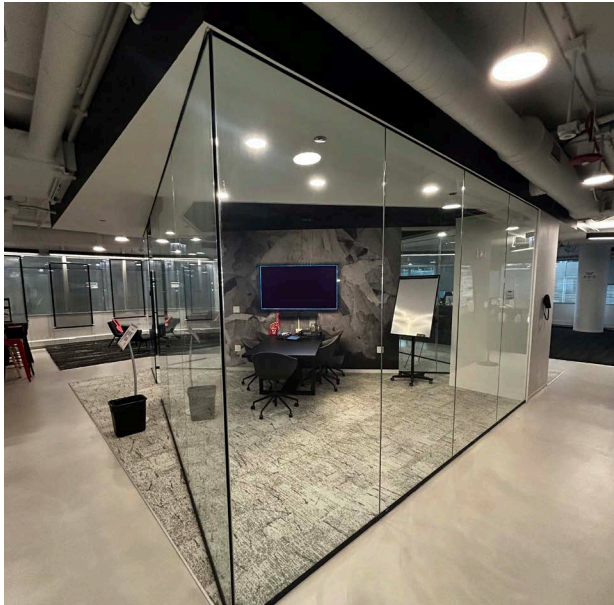
FURNITURE
NEGOTIABLE

// FLOOR PLAN

□ Premises



// GALLERY





ONE S WACKER DR CHICAGO

 CUSHMAN &
WAKEFIELD

CONTACT

JACK DEROCHE

Director

+1 847 754 7495

jack.deroche@cushwake.com

©2023 Cushman & Wakefield. All rights reserved. The material in this presentation has been prepared solely for information purposes, and is strictly confidential. Any disclosure, use, copying or circulation of this presentation (or the information contained within it) is strictly prohibited, unless you have obtained Cushman & Wakefield's prior written consent. The views expressed in this presentation are the views of the author and do not necessarily reflect the views of Cushman & Wakefield. Neither this presentation nor any part of it shall form the basis of, or be relied upon in connection with any offer, or act as an inducement to enter into any contract or commitment whatsoever. NO REPRESENTATION OR WARRANTY IS GIVEN, EXPRESS OR IMPLIED, AS TO THE ACCURACY OF THE INFORMATION CONTAINED WITHIN THIS PRESENTATION, AND CUSHMAN & WAKEFIELD IS UNDER NO OBLIGATION TO SUBSEQUENTLY CORRECT IT IN THE EVENT OF ERRORS.