

2.5 ACRES COMMERCIAL LAND FOR SALE



175th St W

12,700



80,000 vpd

25,500 vpd

8,800 vpd

15,200 vpd

18,700 vpd

CONTACTS:

BEN DREW
Associate
+1 952 837 8553
ben.drew@cushwake.com

LUKE APPERT
Executive Director
+1 952 893 8238
luke.appert@cushwake.com

JON RAUSCH, CCIM, SIOR
Executive Director
+1 952 893 8251
jon.rausch@cushwake.com

10650 175th St W
Lakeville, MN 55044



// PROPERTY HIGHLIGHTS

- ADJACENT TO ARGONNE VILLAGE SHOPPING CENTER, ANCHORED BY CUB FOODS AND WALGREENS
- USES INCLUDE: SENIOR HOUSING, OFFICE, RETAIL AND MEDICAL
- SEWER AND WATER AVAILABLE





// PROPERTY INFORMATION

PID #
22-11850-00-240

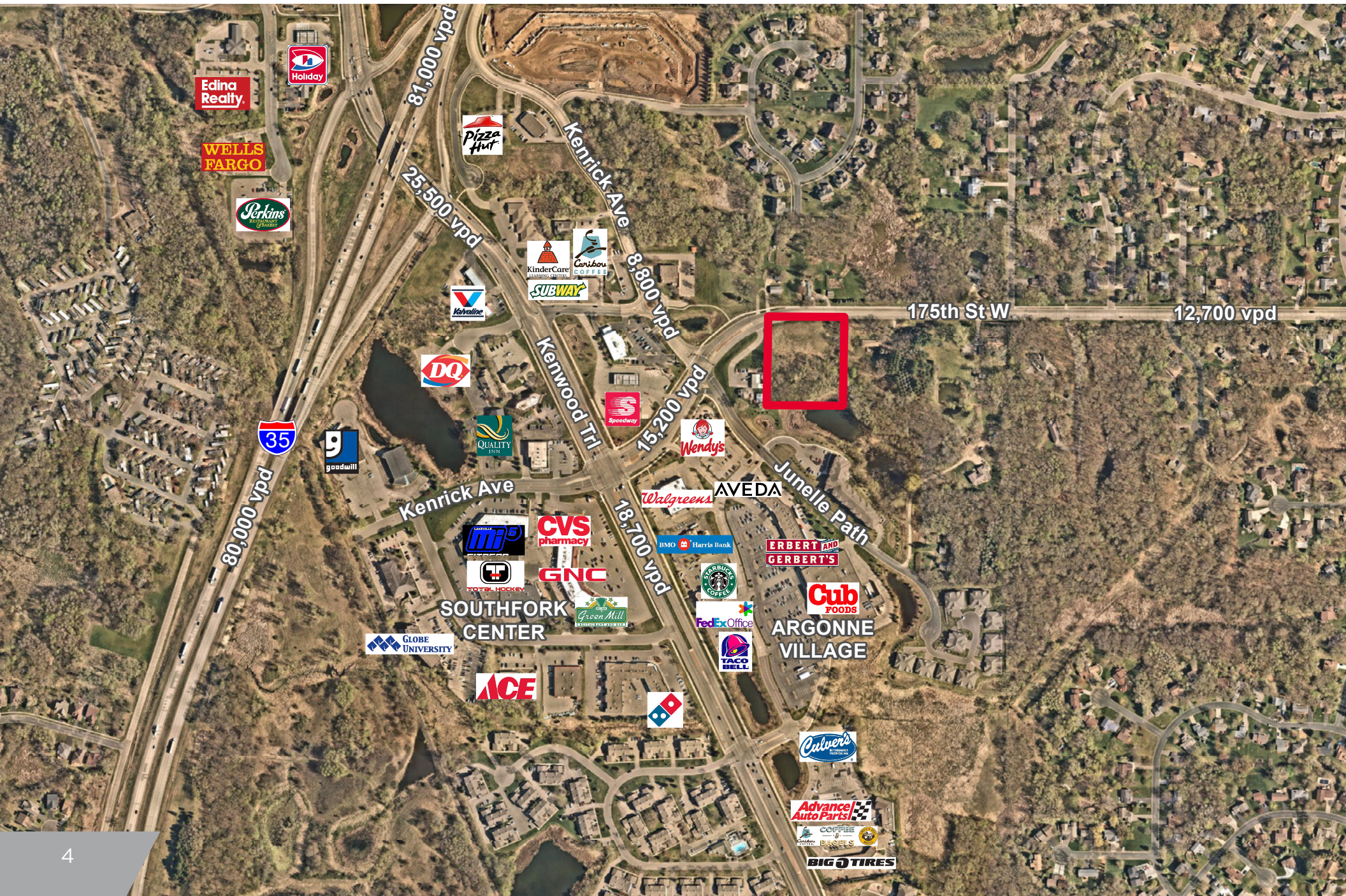
TAXES
\$20,086

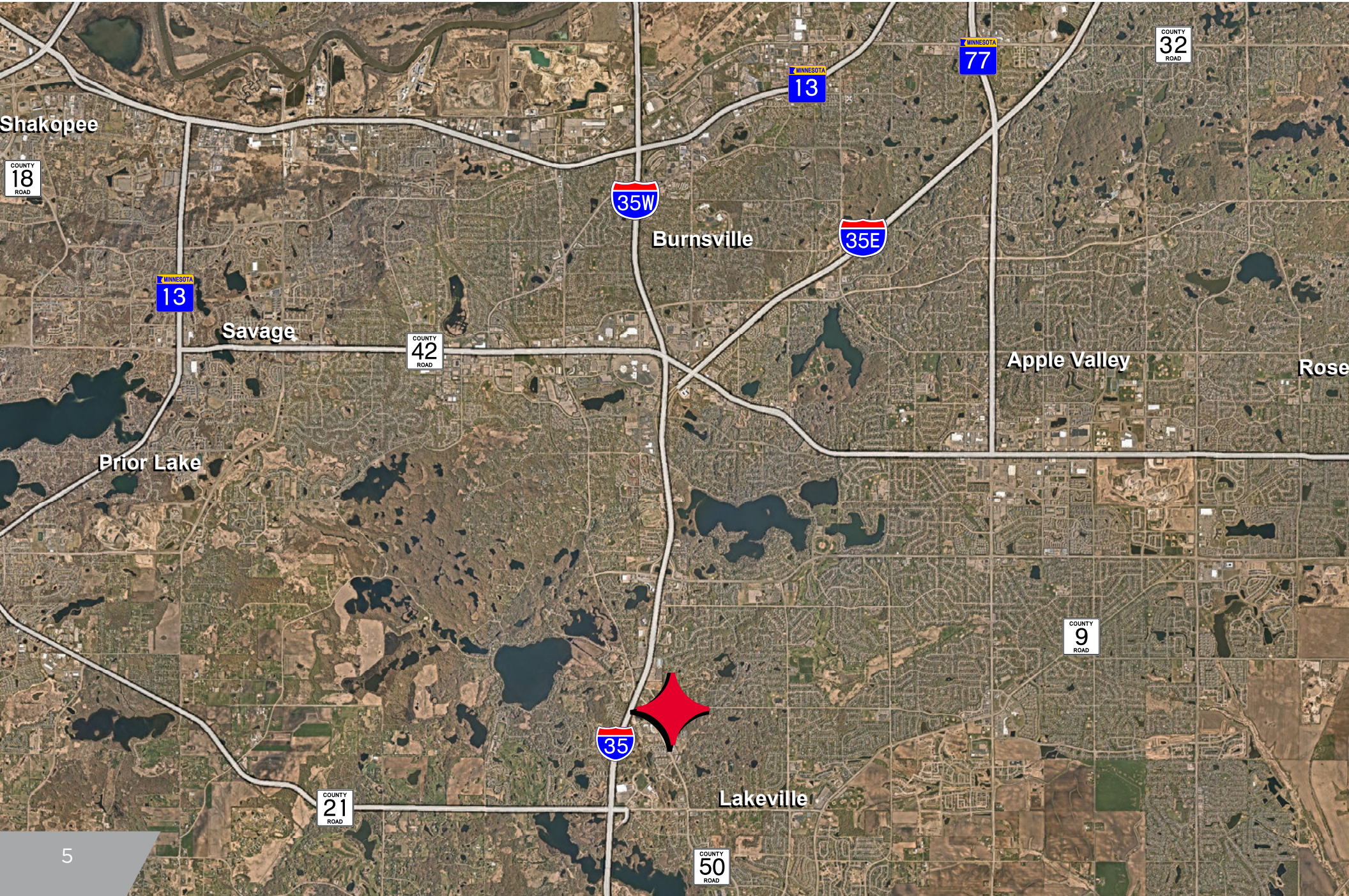
LOT SIZE
2.582 ACRES

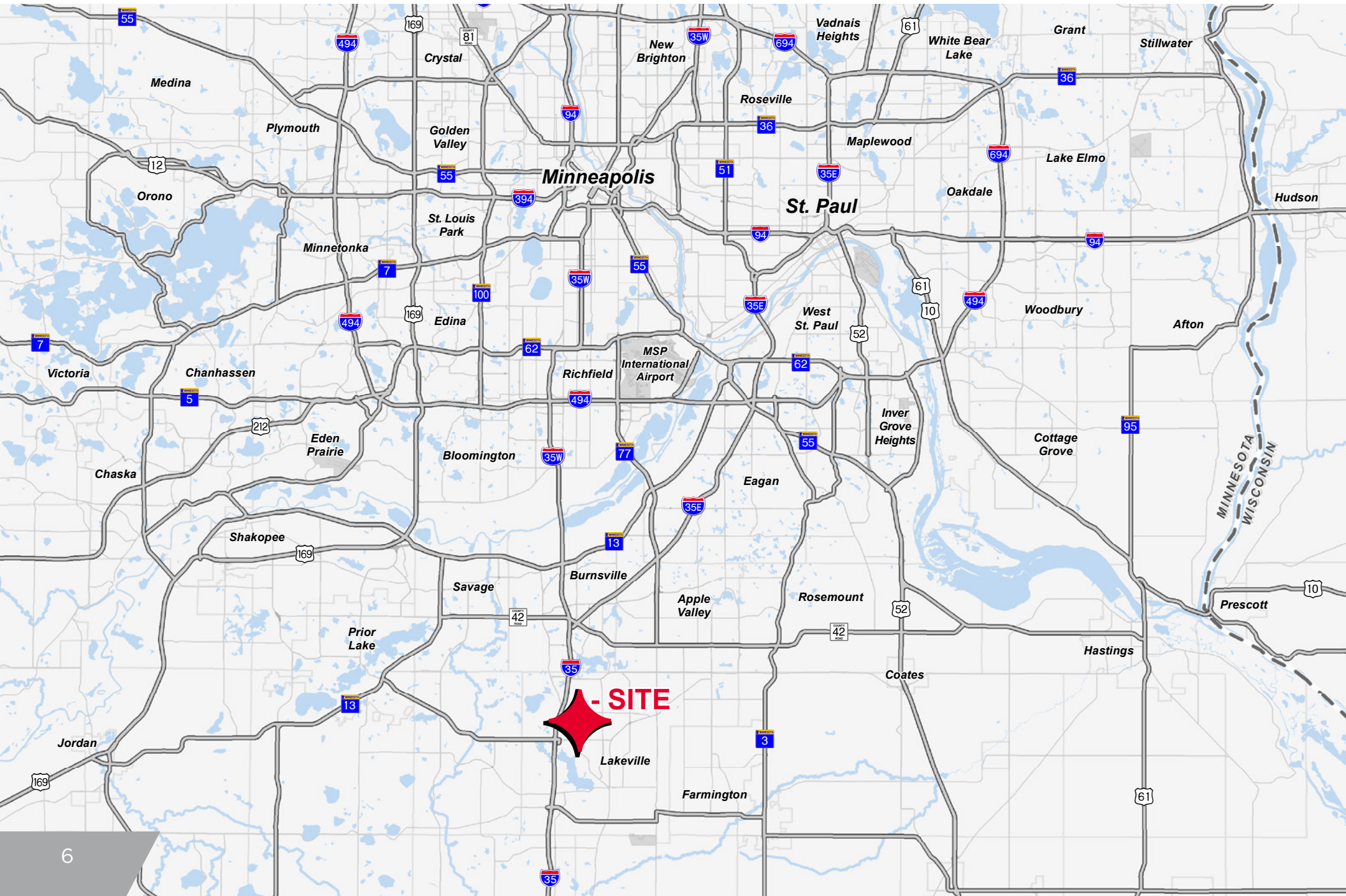
ZONING
GENERAL COMMERCIAL
DISTRICT

DEMOGRAPHICS	1 MILE	3 MILE	5 MILE
Population	6,795	47,051	139,687
Households	2,397	16,340	50,516
Average HH Income	\$146,410	\$134,358	\$117,459
Daytime Population	2,644	9,595	55,329

// AERIAL

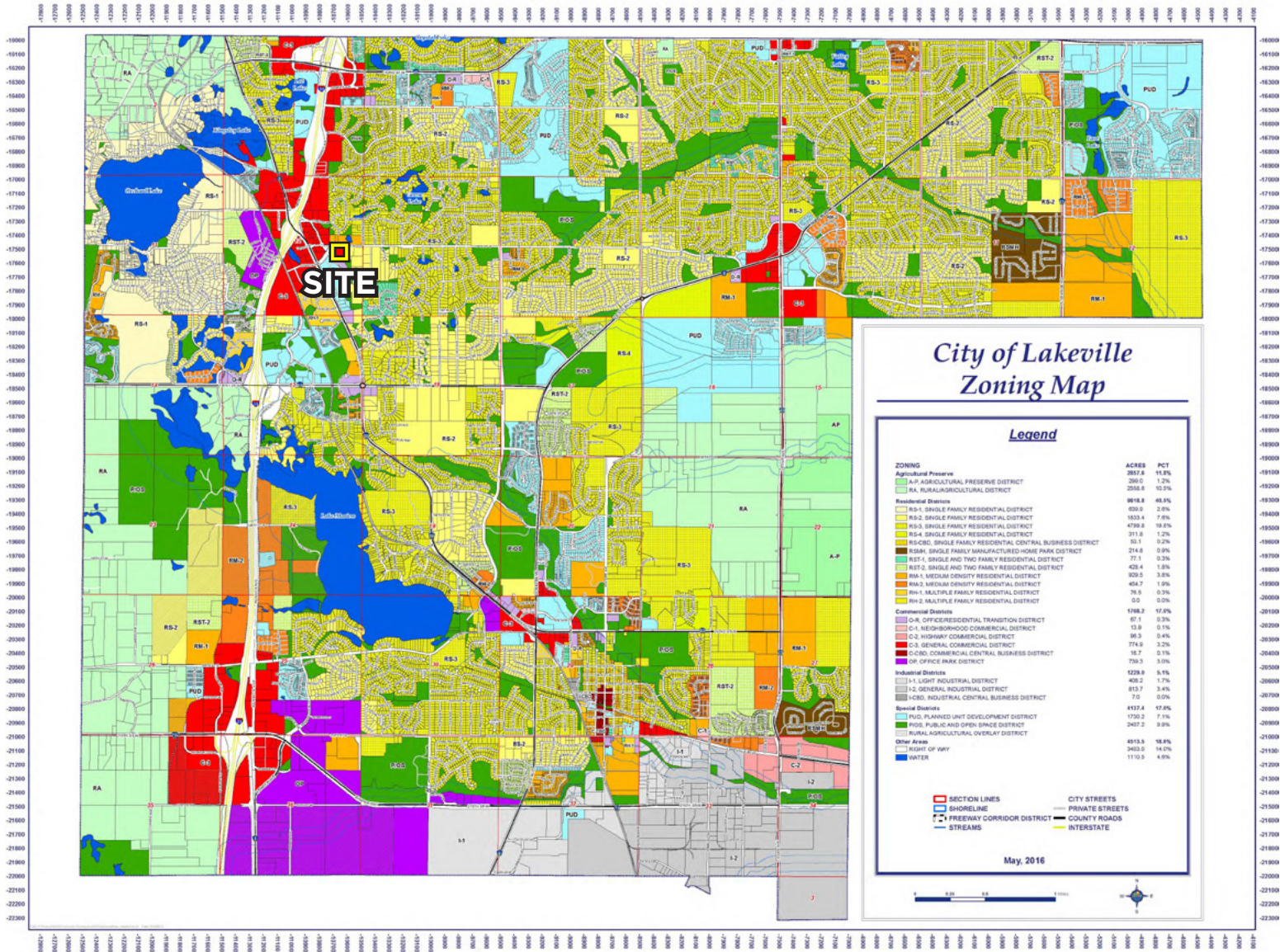






- SITE

// ZONING MAP



CLICK ON MAP FOR PRINTABLE IMAGE

2.5 ACRES MIXED-USE LAND FOR SALE



CONTACT

BEN DREW
Associate
+1 952 837 8553
ben.drew@cushwake.com

JON RAUSCH, CCIM, SIOR
Executive Director
+1 952 893 8251
jon.rausch@cushwake.com

LUKE APPERT
Executive Director
+1 952 893 8238
luke.appert@cushwake.com



visit us at: landmnwi.com

©2021 Cushman & Wakefield. All rights reserved. The material in this presentation has been prepared solely for information purposes, and is strictly confidential. Any disclosure, use, copying or circulation of this presentation (or the information contained within it) is strictly prohibited, unless you have obtained Cushman & Wakefield's prior written consent. The views expressed in this presentation are the views of the author and do not necessarily reflect the views of Cushman & Wakefield. Neither this presentation nor any part of it shall form the basis of, or be relied upon in connection with any offer, or act as an inducement to enter into any contract or commitment whatsoever. NO REPRESENTATION OR WARRANTY IS GIVEN, EXPRESS OR IMPLIED, AS TO THE ACCURACY OF THE INFORMATION CONTAINED WITHIN THIS PRESENTATION, AND CUSHMAN & WAKEFIELD IS UNDER NO OBLIGATION TO SUBSEQUENTLY CORRECT IT IN THE EVENT OF ERRORS.