

RESIDENTIAL LAND FOR SALE

67 ACRES

SITE

LAKEVILLE

CONTACTS:

JON RAUSCH, CCIM, SIOR
Executive Director
+1 952 893 8251
jon.rausch@cushwake.com

BEN DREW
Associate
+1 952 837 8553
ben.drew@cushwake.com

LUKE APPERT
Executive Director
+1 952 893 8238
luke.appert@cushwake.com

**GUIDED
SINGLE-FAMILY
& TOWNHOMES**

19250 Kenrick Ave
Lakeville, MN 55044

**CUSHMAN &
WAKEFIELD**



Enclave of Lakeville
Superior Contracting

Preserve of Lakeville
Progressive, LLC

Caslano
Lennar

Authentix Lakeville
Continental 564 Fund

Bethlehem
Baptist Church

Post
Corporate Office

Trinity
Evangelical
Free Church

Lakeville
South
High School

United
Christian
Academy

Lakeville
North
High School

Lake Marion
Elementary

Lakeview
Elementary

Kenwood Trail
Middle School

Dodd
Marsh Park

Ritter
Farm Park

Casperson
Park & Boat
Launch

West Lake
Marion Park

Antlers
Park

All Saints
Catholic
Church

Kwik
Trip
McDonald's
Cub Foods
Papa Murphy's
Subway
O'Reilly
usbank

Walmart
ALDI
EMAGINE
HARRIS
Hampton Inn
Holiday Inn

McDonald's
SUBWAY
BALDY'S

NEW HORIZON
OLD NATIONAL BANK
FRANDSEN BANK & TRUST

Kindercare
Teresa's
Great Clips
Papa Murphy's
SUBWAY
O'Reilly
usbank

McG
Mid
Sch



SITE

Lake Marion

PROPERTY INFORMATION

LOT SIZE

66.76 ACRES

ZONING

RM-2 MEDIUM DENSITY RESIDENTIAL,
RS-3 SINGLE FAMILY RESIDENTIAL

2040 LAND USE

MEDIUM/HIGH DENSITY (5-9 UNITS/
ACRE), LOW DENSITY (UP TO 3 UNITS/
ACRE)

PID #

22-02400-27-011

TOTAL TAX

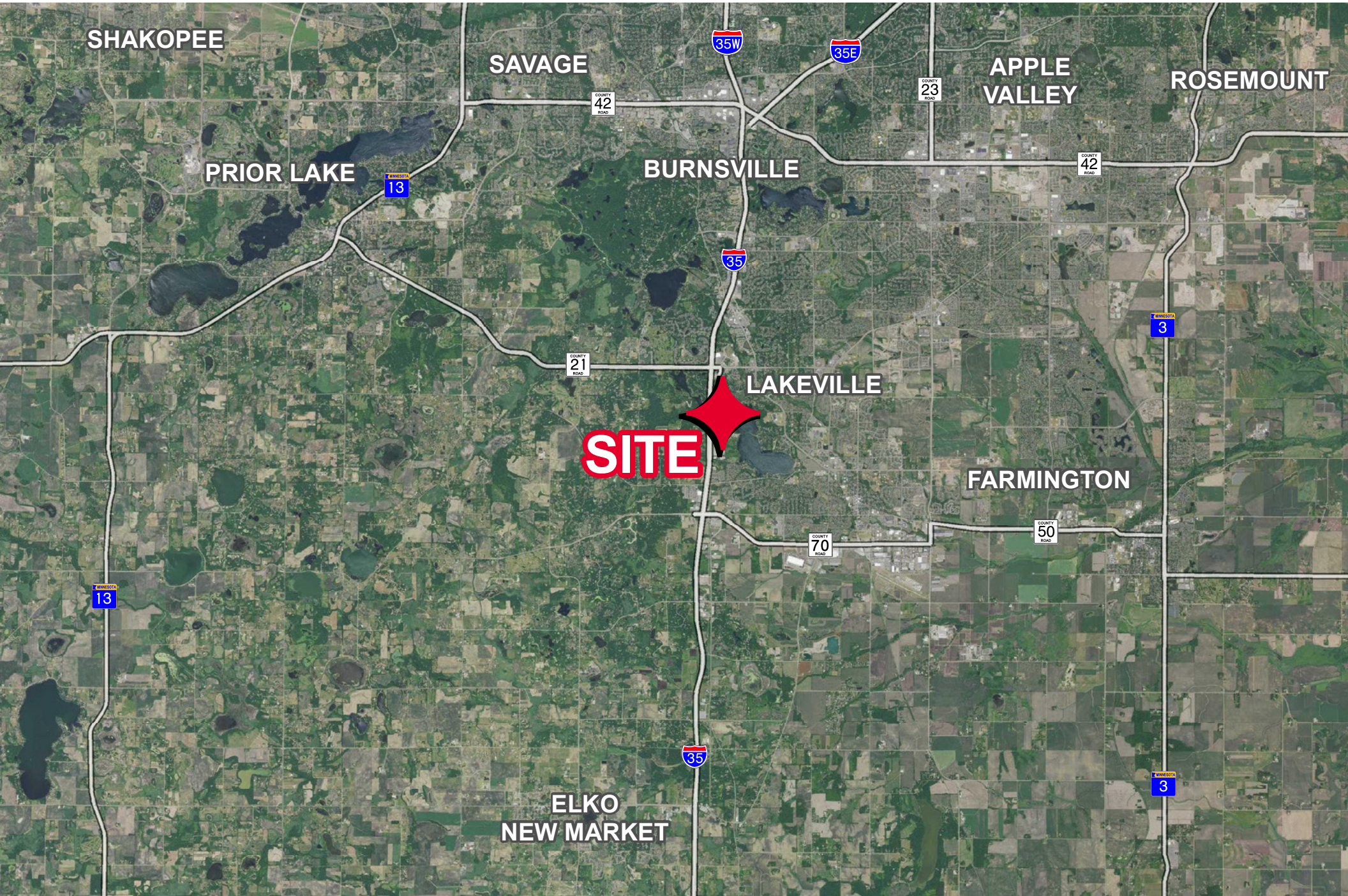
\$39,216

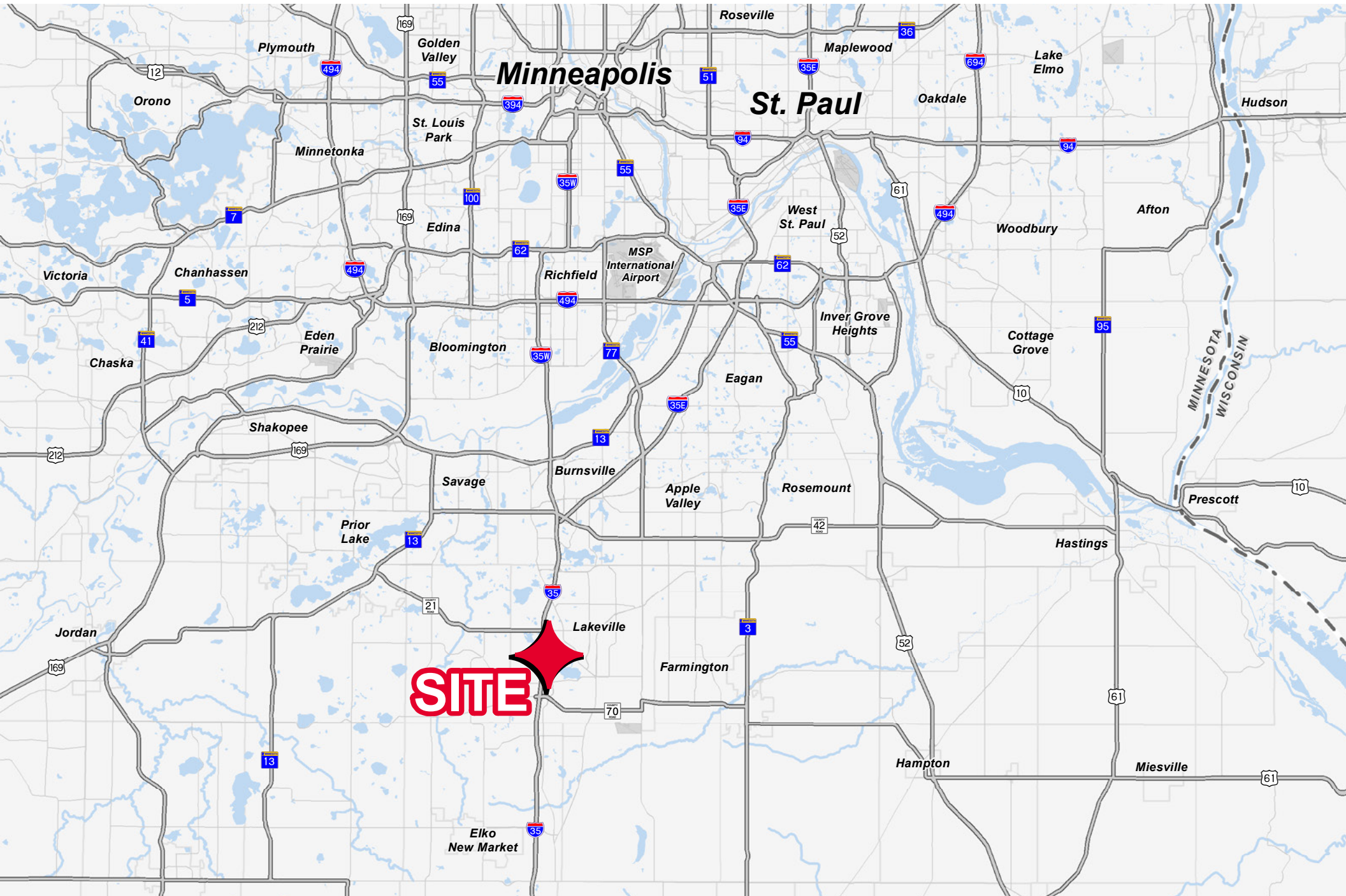
DEMOGRAPHICS (2021)

	1 MILE	3 MILE	5 MILE
Population	2,292	34,754	81,281
Households	842	11,862	28,166
Average HH Income	\$144,830	\$140,956	\$129,274
Daytime Population	591	10,398	24,967

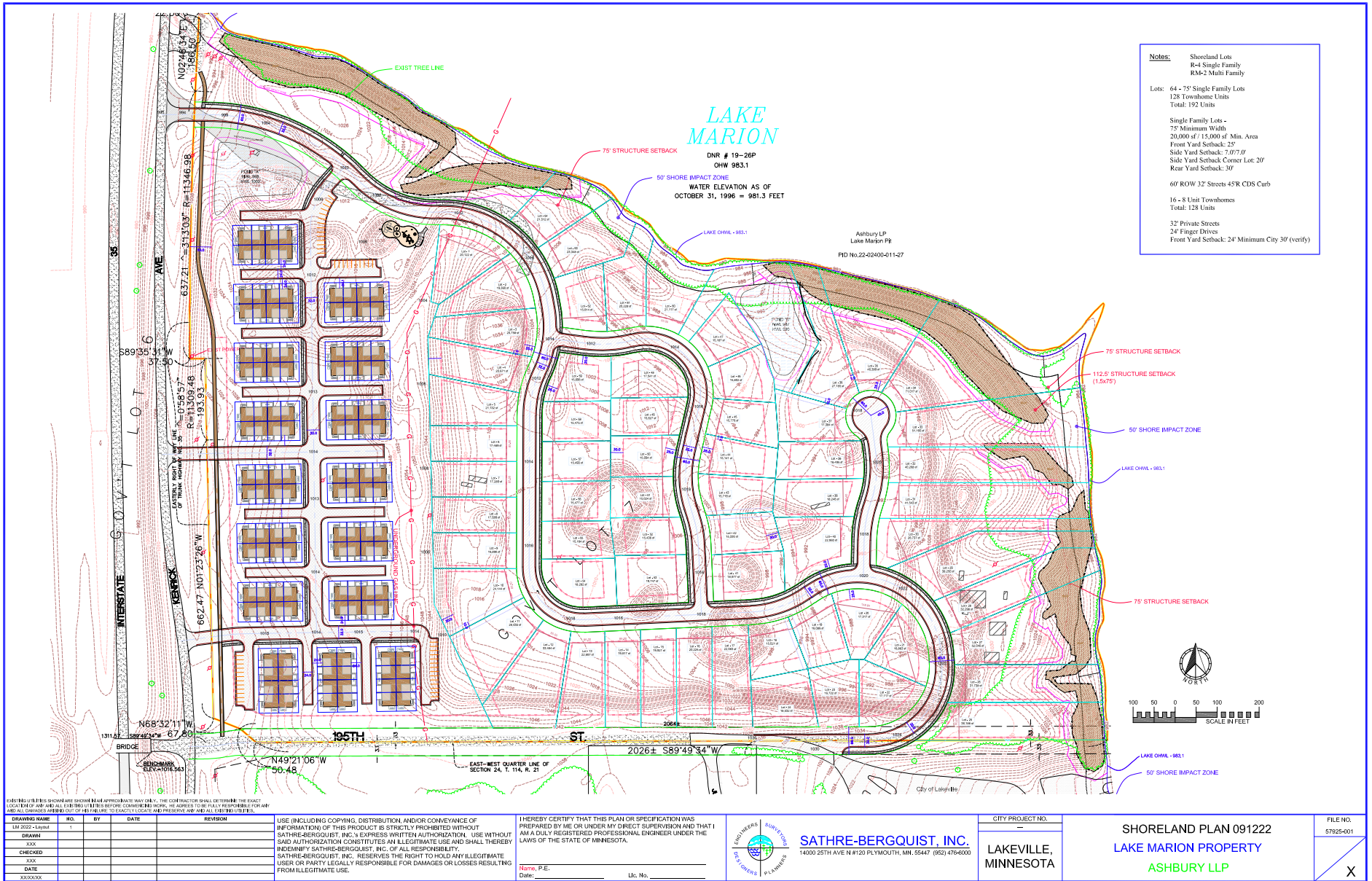
// AERIALS





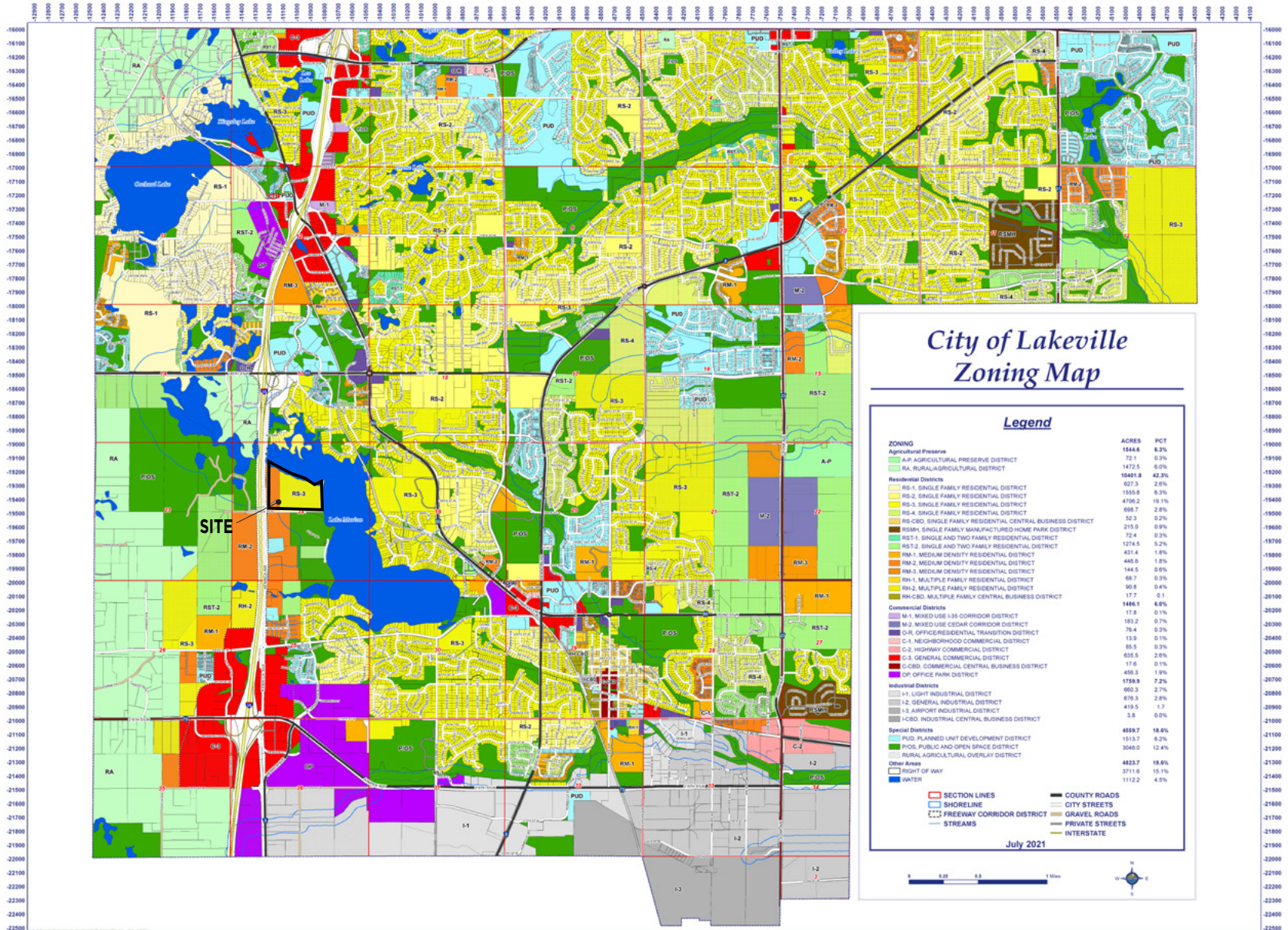


// CONCEPT PLAN



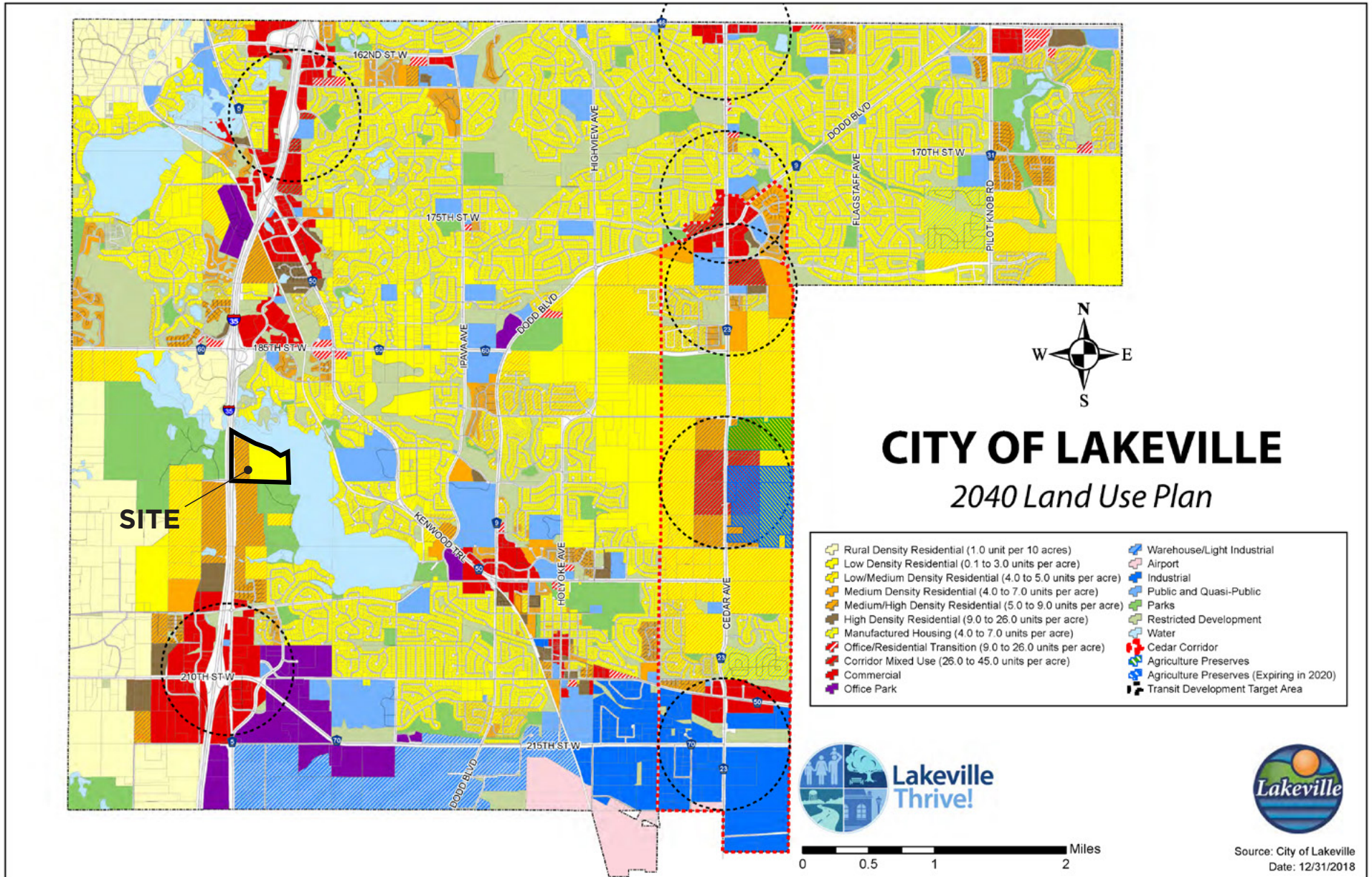
CLICK ON PLAN FOR PRINTABLE IMAGE

// ZONING MAP



CLICK ON MAP FOR PRINTABLE IMAGE

// LAND USE MAP



[CLICK ON MAP FOR PRINTABLE IMAGE](#)

RESIDENTIAL LAND FOR SALE

67 ACRES



CONTACT

JON RAUSCH, CCIM, SIOR
Executive Director
+1 952 893 8251
jon.rausch@cushwake.com

LUKE APPERT
Executive Director
+1 952 893 8238
luke.appert@cushwake.com

BEN DREW
Associate
+1 952 837 8553
ben.drew@cushwake.com



visit us at: landmnwi.com

©2021 Cushman & Wakefield. All rights reserved. The material in this presentation has been prepared solely for information purposes, and is strictly confidential. Any disclosure, use, copying or circulation of this presentation (or the information contained within it) is strictly prohibited, unless you have obtained Cushman & Wakefield's prior written consent. The views expressed in this presentation are the views of the author and do not necessarily reflect the views of Cushman & Wakefield. Neither this presentation nor any part of it shall form the basis of, or be relied upon in connection with any offer, or act as an inducement to enter into any contract or commitment whatsoever. NO REPRESENTATION OR WARRANTY IS GIVEN, EXPRESS OR IMPLIED, AS TO THE ACCURACY OF THE INFORMATION CONTAINED WITHIN THIS PRESENTATION, AND CUSHMAN & WAKEFIELD IS UNDER NO OBLIGATION TO SUBSEQUENTLY CORRECT IT IN THE EVENT OF ERRORS.