



# FARMINGTON'S NEWEST DATA CENTER SITE

110 ACRES

FOR SALE



**LUKE APPERT**  
Executive Director  
+1 651 315 6641  
luke.appert@cushwake.com

**HUDSON BROTHEN**  
Executive Director  
+1 952 893 8261  
hudson.brothen@cushwake.com

**KRIS SMELTZER**  
Executive Managing Director  
+1 952 837 8575  
kris.smeltzer@cushwake.com

**JON RAUSCH**  
Executive Director  
+1 612 685 8288  
jon.rausch@cushwake.com

# PROPERTY HIGHLIGHTS



## PROPERTY INFORMATION

- 110.2 total acres
- 102.82 developable acres
- Excellent access to 212th St SW & Pilot Knob Rd

## POWER

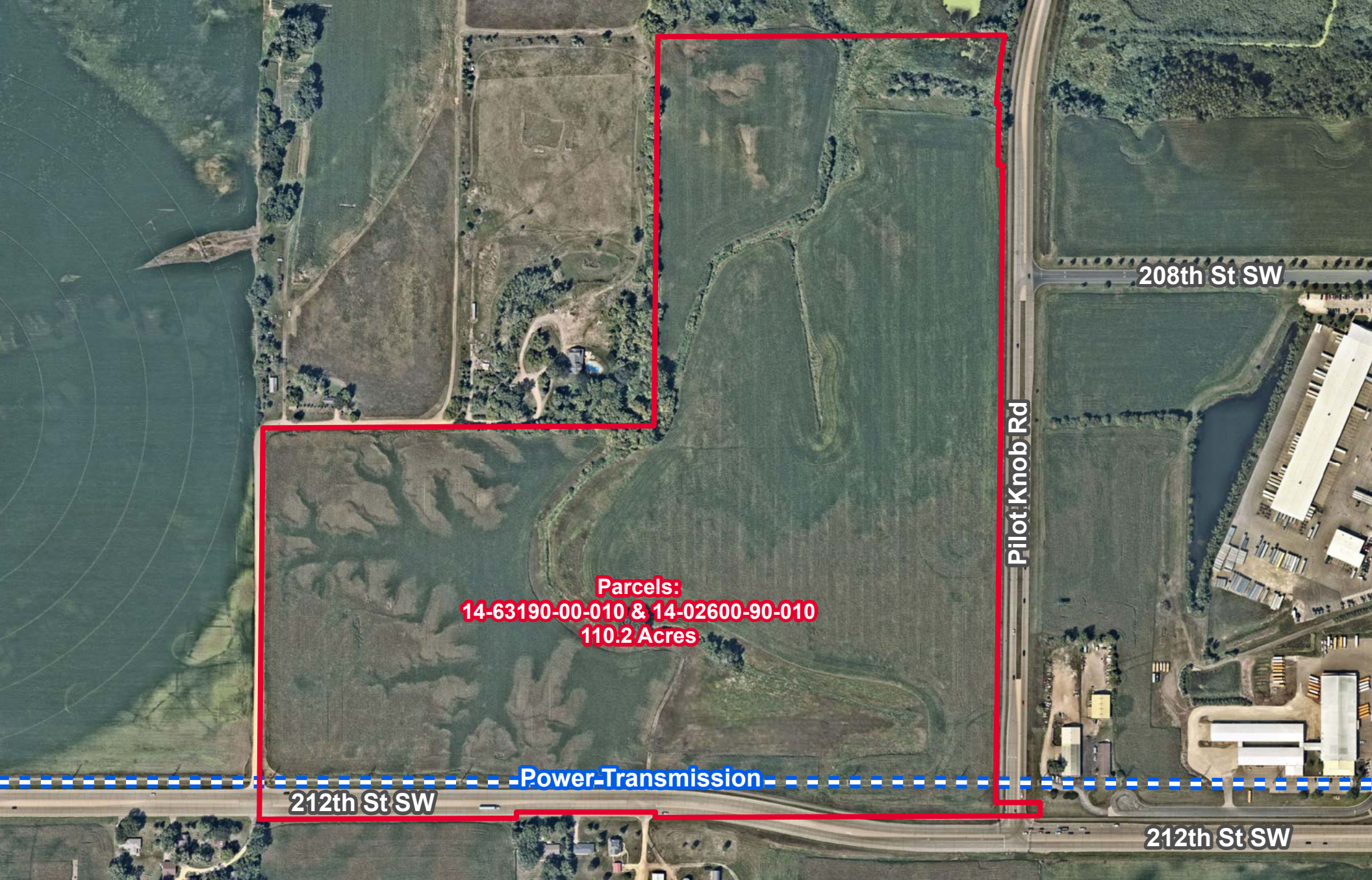
- 115KV and 69KV transmission lines running to the south of the site
- Substation less than 1/4 mile from site

Contact Judy Ring with Xcel Energy for additional information:  
 Phone: (715) 563-5572  
 Email: [judy.l.ring@xcelenergy.com](mailto:judy.l.ring@xcelenergy.com)

## TRAFFIC COUNTS

- 212th St SW: 15,075 vpd
- Pilot Knob Rd: 6,500 vpd

DEMOGRAPHICS	1 MILE	3 MILE	5 MILE
Population	1,526	31,732	75,693
Households	653	10,715	25,054
Average HH Income	\$146,386	\$127,040	\$141,011
Daytime Population	1,009	10,939	17,760



208th St SW

Pilot Knob Rd

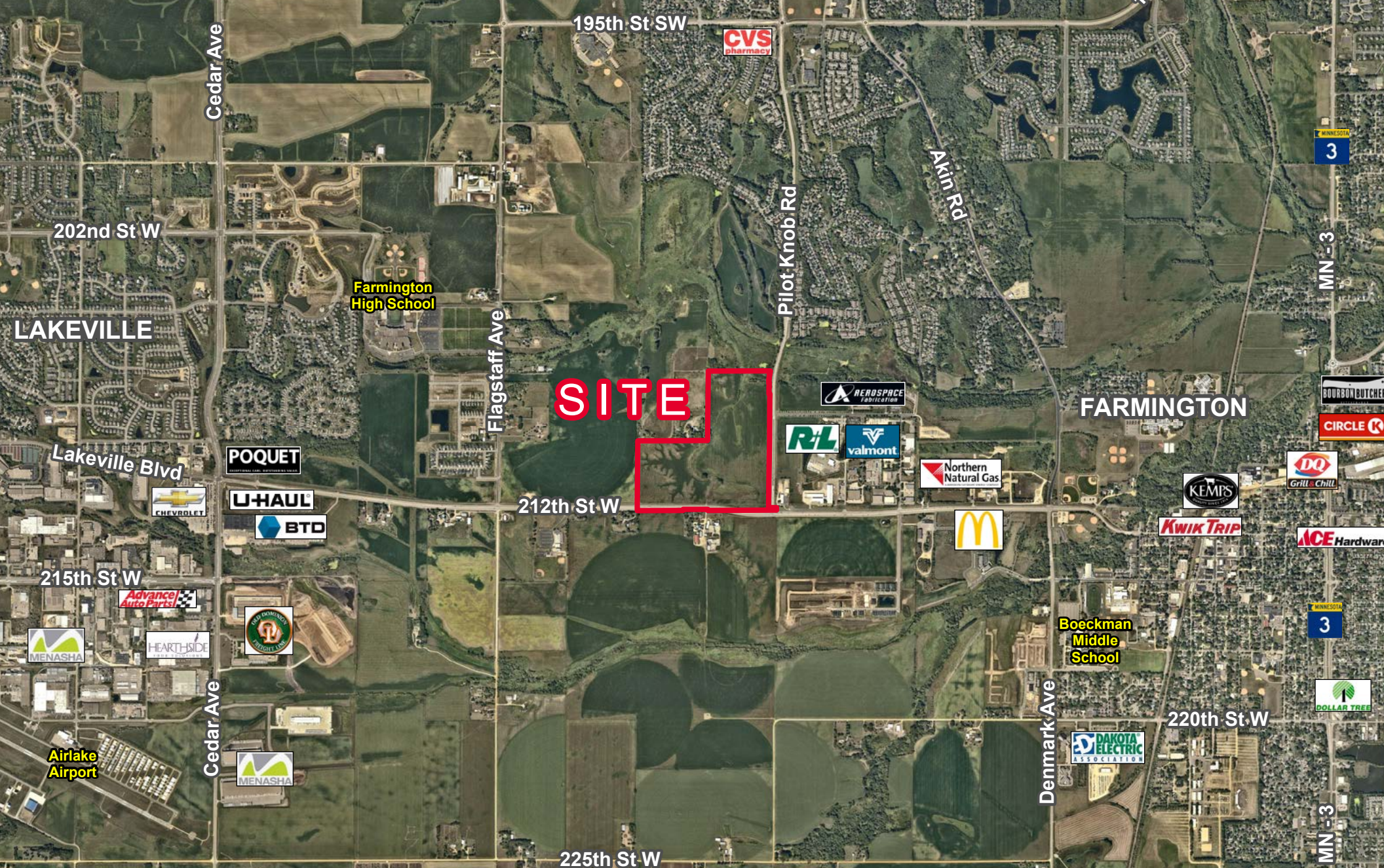
Parcels:  
14-63190-00-010 & 14-02600-90-010  
110.2 Acres

Power Transmission

212th St SW

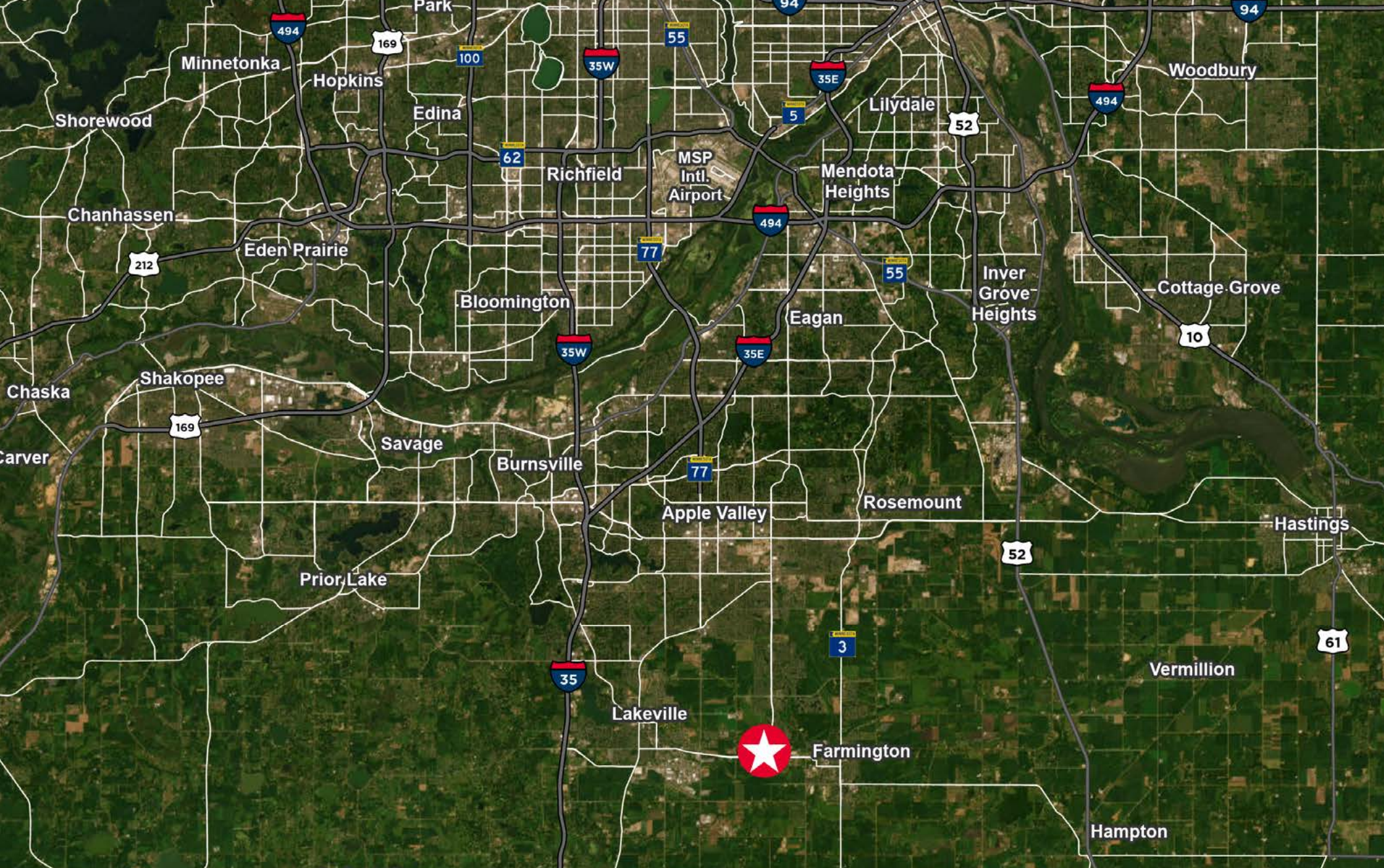
212th St SW

# PROPERTY AERIAL



**SITE**

# PROPERTY **AERIAL**



# PROPERTY **AERIAL**

# CONTACT INFORMATION

**LUKE APPERT**

Executive Director  
+1 651 315 6641  
luke.appert@cushwake.com

**HUDSON BROTHEN**

Executive Director  
+1 952 893 8261  
hudson.brothen@cushwake.com

**KRIS SMELTZER**

Executive Managing Director  
+1 952 837 8575  
kris.smeltzer@cushwake.com

**JON RAUSCH**

Executive Director  
+1 612 685 8288  
jon.rausch@cushwake.com

3500 American Blvd W, Suite 200  
Minneapolis, MN 55431  
952 831 1000  
landmnwi.com

