



FOR LEASE

## 3800 Camp Creek Parkway

Atlanta, GA 30349

Blg. 1800, Suite 124



### BUILDING / PARK FEATURES

- Well established and maintained park
- 4.93:1000 Parking ratio
- 14' Ceiling height
- Outstanding access to diverse amenity base
- Immediate access to I-285
- Minutes to Hartsfield-Jackson International Airport

### PROPERTY HIGHLIGHTS

- 3,320 – 6,640 SF Available
- Private offices
- Conference Room
- Large break room
- Storage Room
- Warehouse with Drive-in capability



FOR MORE INFORMATION, CONTACT:

**Tara Healy**

Director  
+1 404 682 3430  
[tara.healy@cushwake.com](mailto:tara.healy@cushwake.com)

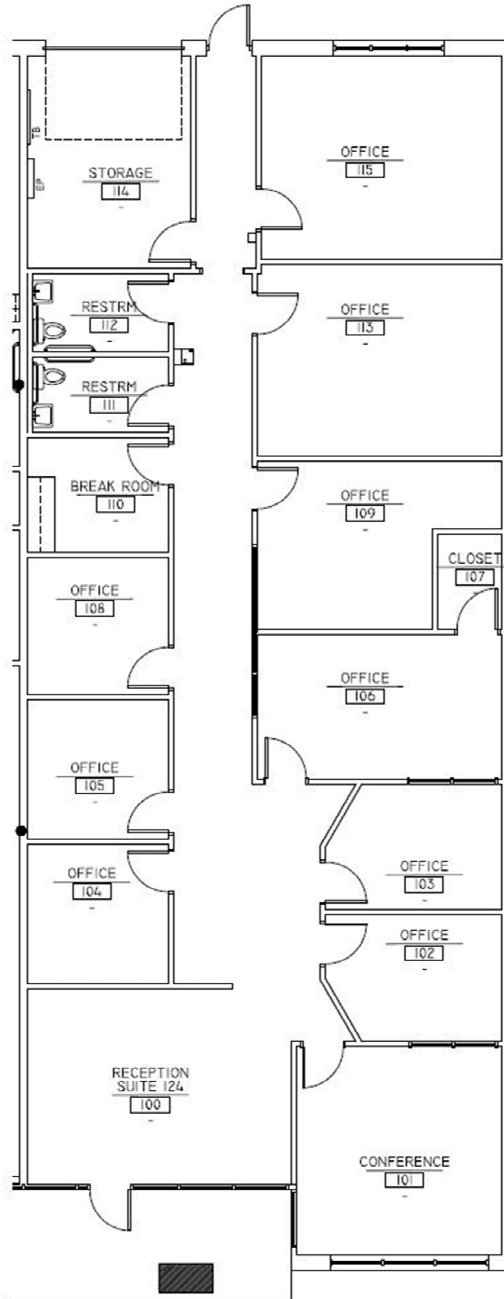
**Andrew Thurman**

Senior Associate  
+1 404 682 3429  
[andrew.thurman@cushwake.com](mailto:andrew.thurman@cushwake.com)



**FLOOR PLAN: Suite 124**

**3,320 SF**



**FOR MORE INFORMATION, CONTACT:**

**Tara Healy**

Director  
+1 404 682 3430  
[tara.healy@cushwake.com](mailto:tara.healy@cushwake.com)

**Andrew Thurman**

Senior Associate  
+1 404 682 3429  
[andrew.thurman@cushwake.com](mailto:andrew.thurman@cushwake.com)