

Watermark
by Lennar

LINO LAKES

SITE

UNDER CONTRACT

amazon

DISTRIBUTION
ALTERNATIVES

CENTERVILLE

HUGO

SWQ I-35E & MAIN ST

2.28 ACRES FOR SALE LINO LAKES, MN

JON RAUSCH, CCIM, SIOR
Executive Director
+1 612 685 8288
jon.rausch@cushwake.com

BEN DREW
Senior Associate
+1 952 210 4637
ben.drew@cushwake.com



SWQ I-35E & MAIN ST LINO LAKES, MN

Property Highlights

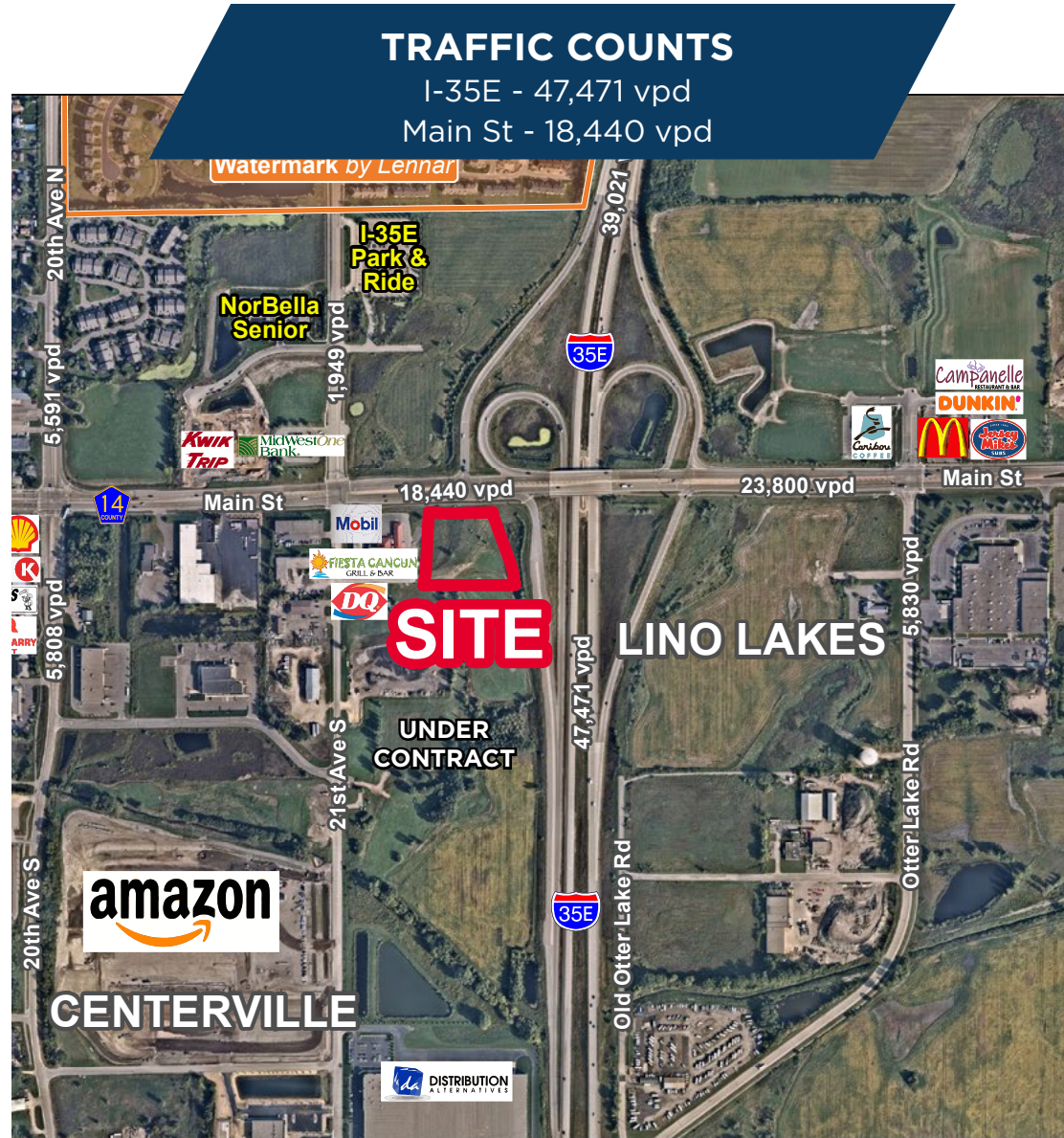
- Prime retail site
- Utilities to site
- Ryan Companies under contract to the South for an industrial development

Property Information

| | |
|---------|------------------|
| PID # | TBD |
| Acreage | 2.28 |
| Zoning | General Business |
| Tax | TBD |

Demographics (2022)

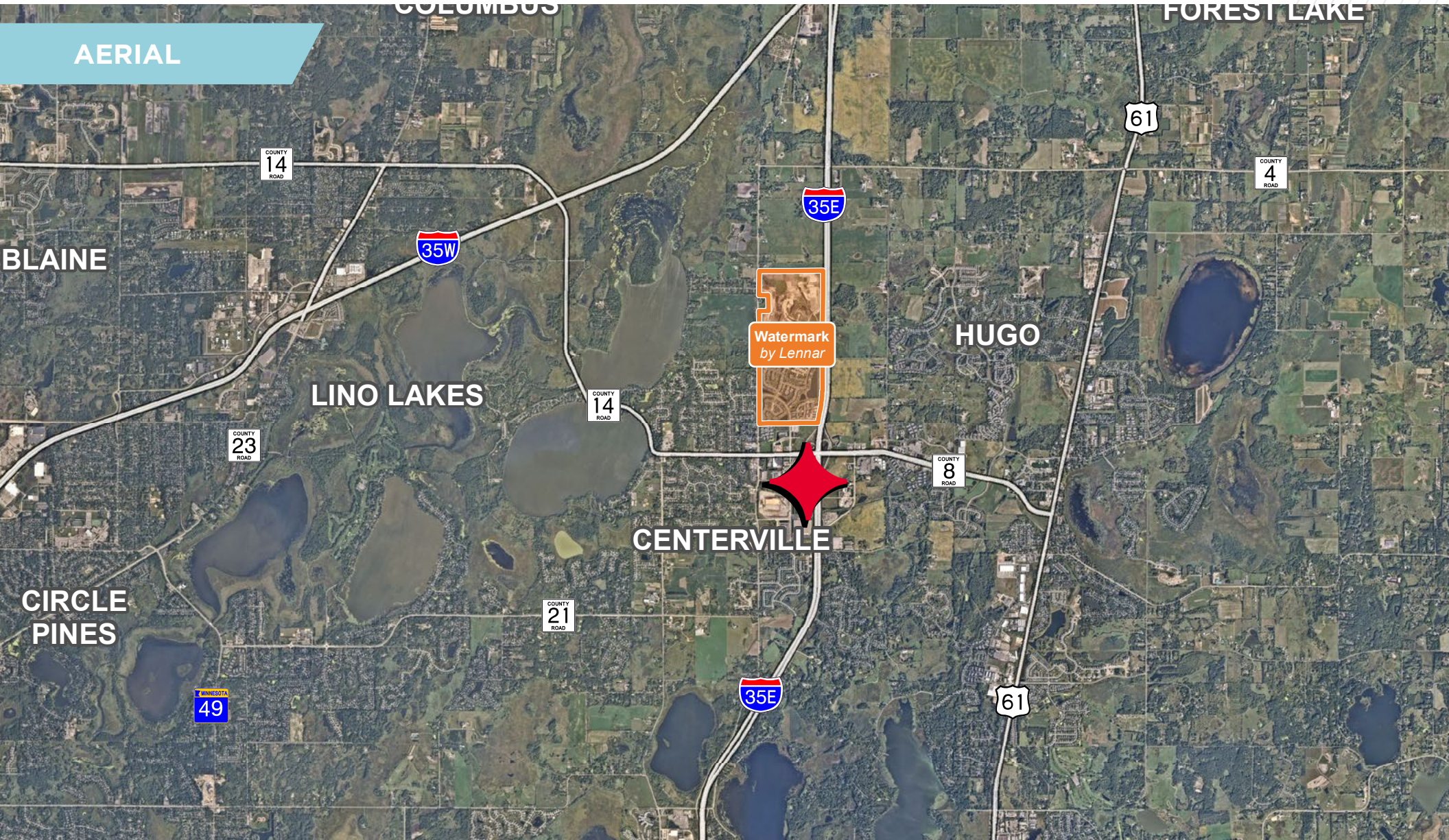
| | 1 Mile | 3 Miles | 5 Miles |
|--------------------|-----------|-----------|-----------|
| Population | 4,570 | 23,822 | 49,676 |
| Households | 1,664 | 8,695 | 17,607 |
| Average HH Income | \$148,743 | \$144,058 | \$149,125 |
| Daytime Population | 1,223 | 4,540 | 12,610 |



SWQ I-35E & MAIN ST

LINO LAKES, MN

AERIAL



SWQ I-35E & MAIN ST

LINO LAKES, MN

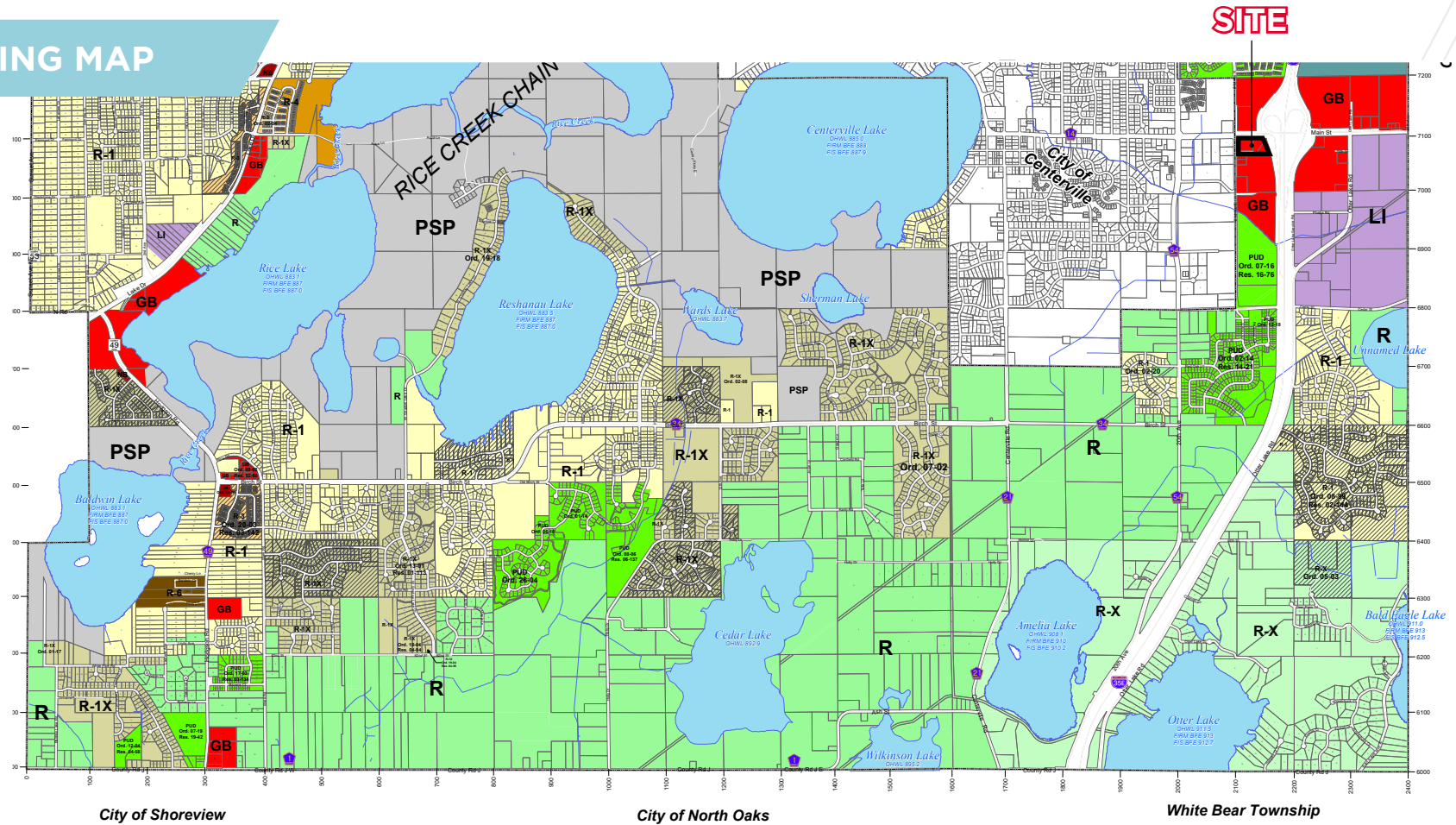
CONCEPT PLAN



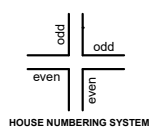
[CLICK ON SURVEY FOR PRINTABLE IMAGE](#)

SWQ I-35E & MAIN ST LINO LAKES, MN

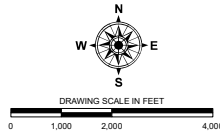
ZONING MAP



Lino Lakes
Community Development
600 Town Center Parkway
Lino Lakes, Minnesota 55014
Phone (651) 982-2400



Coordinate System:
Anoka County NAD83 Feet
Lambert Conformal Conic
Anoka County Parcel Data:
November 2021 Release



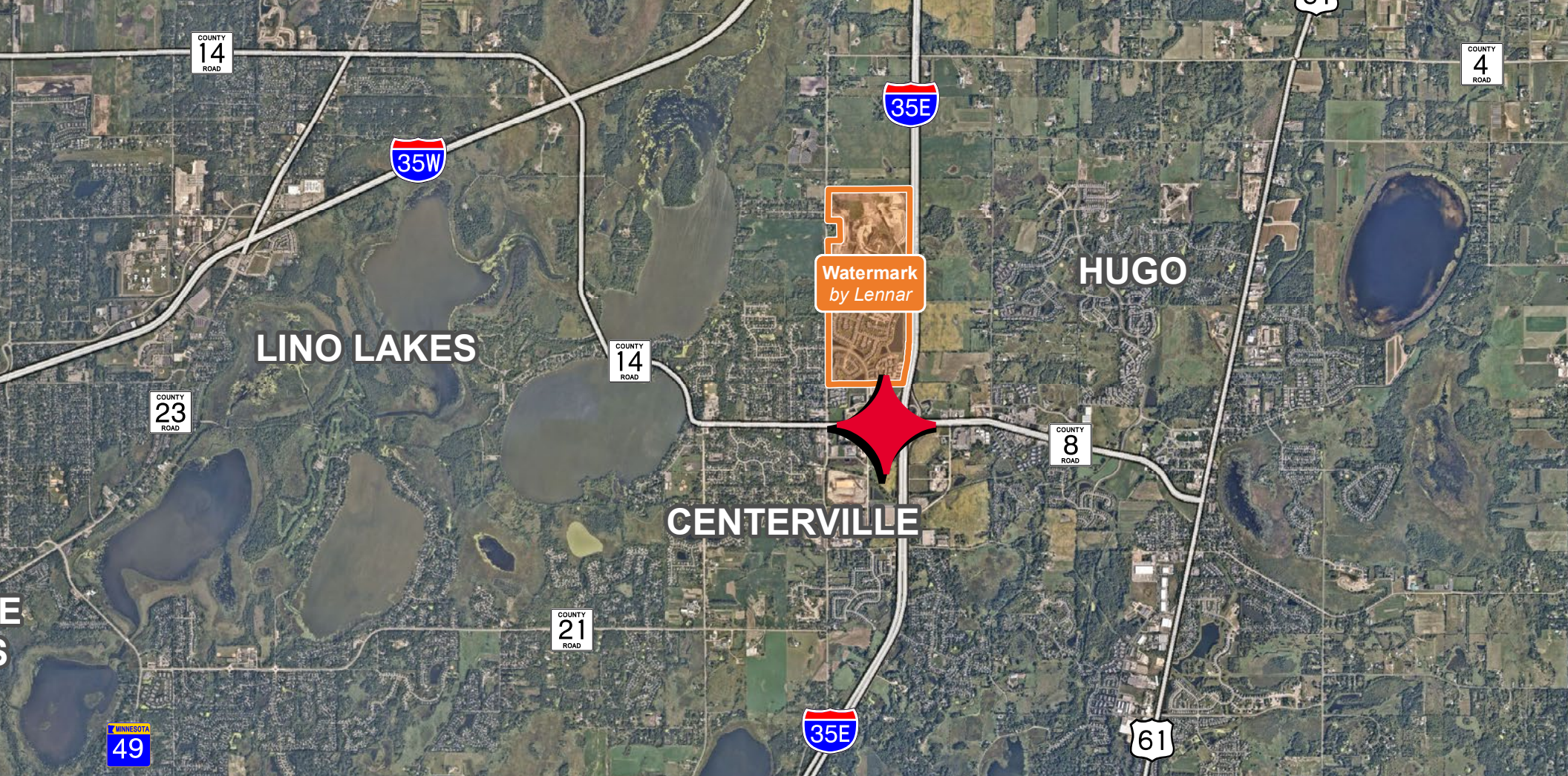
March 21, 2022

Maps are for illustrative purposes only.
Recent changes may not be included.
Land Use and Zoning Information
should be verified with City Staff.

| Features | Zoning Type | Zoning Type | Zoning Type |
|--------------------|-------------------------------|--------------------------------|------------------------------|
| Streams | R Rural | R-3 Medium Density Residential | GI General Industrial |
| Lake | R-X Rural Executive | R-4 High Density Residential | LI Light Industrial |
| Parcels | R-1 Single Family Residential | R-6 Manufactured Home Park | R-BR Rural Business Reserve |
| Municipal Boundary | R-1X Single Family Executive | LB Limited Business | PSP Public Semi-Public |
| | R-2 Two Family Residential | GB General Business | PUD Planned Development |
| | | NB Neighborhood Business | PUD Planned Unit Development |

Updated Through Ordinance No. 03-21

CLICK ON MAP FOR PRINTABLE IMAGE



FOR MORE INFORMATION, CONTACT:

JON RAUSCH, CCIM, SIOR
Executive Director
+1 612 685 8288
jon.rausch@cushwake.com

BEN DREW
Senior Associate
+1 952 210 4637
ben.drew@cushwake.com

©2023 Cushman & Wakefield. All rights reserved. The material in this presentation has been prepared solely for information purposes, and is strictly confidential. Any disclosure, use, copying or circulation of this presentation (or the information contained within it) is strictly prohibited, unless you have obtained Cushman & Wakefield's prior written consent. The views expressed in this presentation are the views of the author and do not necessarily reflect the views of Cushman & Wakefield. Neither this presentation nor any part of it shall form the basis of, or be relied upon in connection with any offer, or act as an inducement to enter into any contract or commitment whatsoever. NO REPRESENTATION OR WARRANTY IS GIVEN, EXPRESS OR IMPLIED, AS TO THE ACCURACY OF THE INFORMATION CONTAINED WITHIN THIS PRESENTATION, AND CUSHMAN & WAKEFIELD IS UNDER NO OBLIGATION TO SUBSEQUENTLY CORRECT IT IN THE EVENT OF ERRORS.

