

# 9000 GULF FREEWAY

HOUSTON, TX 77061



# PROPERTY DETAILS

## 3 BUILDINGS, 1 CAMPUS

- Building A: 52,075 SF
- Building B: 52,680 SF
- 12,000 SF warehouse
- 8.7441 Acres Land
- Top building signage available
- Plug-n-play environment
- Unparalleled visibility from Gulf Freeway
- Ample surface parking
- Efficient ingress and egress from Gulf Freeway
- Fully gated site for secure access
- Redevelopment options
- Priced far below assessed value



Land Site

— Egress

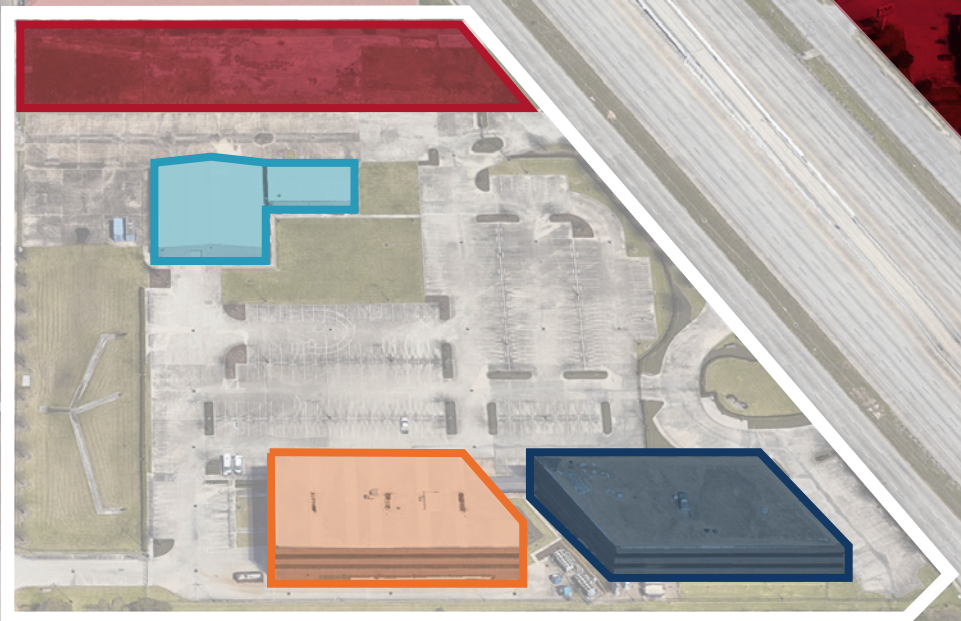
— Ingress

# PROPERTY SURVEY



# CAMPUS OVERVIEW

- Highly visible with traffic counts exceeding 400k cars per day
- Easy access to Hobby Airport
- Direct access to Gulf Freeway



**BUILDING A**

**BUILDING B**

**WAREHOUSE**

**ADDITIONAL LAND**

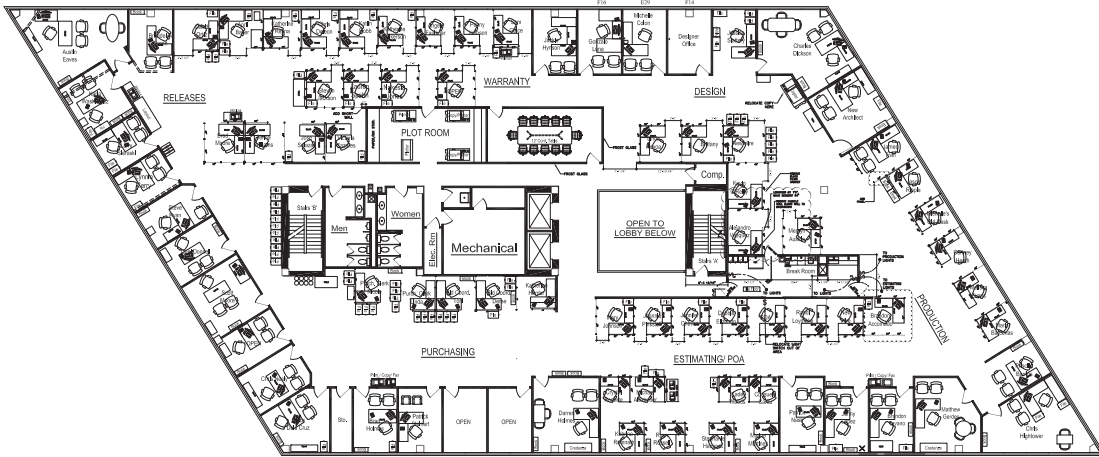


## PLUG-N-PLAY OFFICE

- Furniture included in sale or lease
- Ample conferencing space with various seating arrangements and up-to-date A/V
- Flexibility for a multitude of collaboration spaces while maintaining robust private office space

# CAMPUS OPPORTUNITY

## BUILDING A FLOOR PLAN

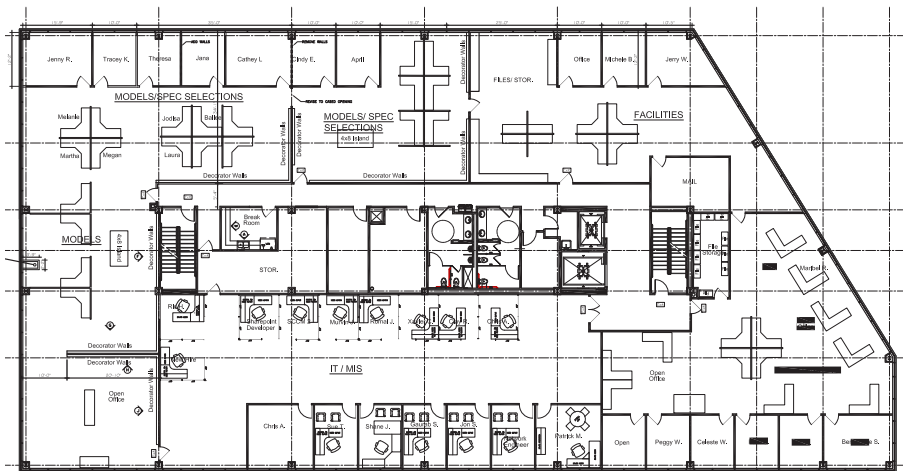


187  
Workstations



100  
Offices

## BUILDING B FLOOR PLAN



Large Cafe



Multipurpose/  
Training Room



Huddle Rooms, Board Rooms  
and Large Conference  
Rooms Throughout



Storage and  
Warehouse Space

Business + AIRPORT

## AREA OVERVIEW

- A five minute drive time to Hobby Airport
- Proximity to the largest Gulf Coast container port



William P  
Hobby Airport

9000 Gulf Freeway



99

249

45

69

8

6

290

610

10

WESTPARK TOLLWAY

10

146

99

69

610

9000 Gulf Freeway

8

45

288



# 9000 GULF FREEWAY

HOUSTON, TX 77061



## CONTACTS

### **KELLEY PARKER, III, SIOR**

Vice Chair

+1 713 963 2896

[kelley.parker@cushwake.com](mailto:kelley.parker@cushwake.com)

### **JOHN LITTMAN, SIOR**

Executive Managing Director

+1 713 963 2862

[john.littman@cushwake.com](mailto:john.littman@cushwake.com)

### **COE PARKER, SIOR**

Senior Director

+1 713 963 2825

[coe.parker@cushwake.com](mailto:coe.parker@cushwake.com)

