



LOCATED IN PORT OF JEFFERSONVILLE



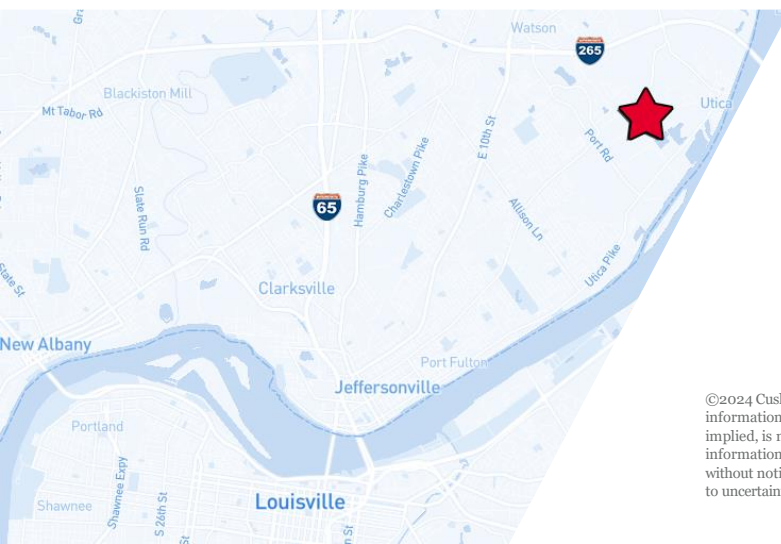
5171 MARITIME ROAD

Jeffersonville, IN 47130

**158,440 SF
FOR LEASE**

PROPERTY HIGHLIGHTS

- 158,440 sf available
- Up to 13,973 sf of office
- 24' clear height
- Six (6) dock doors
 - Four (4) fully-equipped
- Two (2) 10' x 14' drive-in doors
- One (1) 18' x 18' drive-in door



BLAKE SCINTA, CCIM

Senior Associate
502 589 5150 ext. 230
bscinta@commercialkentucky.com

GREG CHARMOLI

Senior Director
502 589 5150 ext. 238
gcharmoli@commercialkentucky.com

333 E. Main Street, Suite 510 | Louisville, KY 40202
+1 502 589 5150
www.CommercialKentucky.com

©2024 Cushman & Wakefield. All rights reserved. The information contained in this communication is strictly confidential. This information has been obtained from sources believed to be reliable but has not been verified. No warranty or representation, express or implied, is made as to the condition of the property (or properties) referenced herein or as to the accuracy or completeness of the information contained herein, and same is submitted subject to errors, omissions, change of price, rental or other conditions, withdrawal without notice, and to any special listing conditions imposed by the property owner(s). Any projections, opinions or estimates are subject to uncertainty and do not signify current or future property performance.

5171 MARITIME ROAD

Jeffersonville, IN 47130

158,440 SF FOR LEASE



PROPERTY INFORMATION

- LED lighting
- 480 volt; 4,000 amps; 3-phase
- Compressed air lines throughout
- Three (3) 3-ton cranes (70')
- Two (2) LVS ventilation fans
- 7" – 10" concrete floor
- 90+ parking spaces
- 30 acres
- Secured/gates/fenced access
- I-2 zoning
- Convenient access to I-265, Lewis & Clark Bridge, and heavy haul road from Port to River Ridge



BLAKE SCINTA, CCIM

Senior Associate
502 589 5150 ext. 230
bscinta@commercialkentucky.com

GREG CHARMOLI

Senior Director
502 589 5150 ext. 238
gcharmoli@commercialkentucky.com

333 E. Main Street, Suite 510
Louisville, KY 40202
+1 502 589 5150
www.CommercialKentucky.com

5171 MARITIME ROAD

Jeffersonville, IN 47130

158,440 SF FOR LEASE



AERIAL IMAGE SE CORNER



BLAKE SCINTA, CCIM

Senior Associate
502 589 5150 ext. 230
bscinta@commercialkentucky.com

GREG CHARMOLI

Senior Director
502 589 5150 ext. 238
gcharmoli@commercialkentucky.com

333 E. Main Street, Suite 510
Louisville, KY 40202
+1 502 589 5150
www.CommercialKentucky.com

5171 MARITIME ROAD

Jeffersonville, IN 47130

158,440 SF FOR LEASE



AERIAL IMAGE



BLAKE SCINTA, CCIM

Senior Associate
502 589 5150 ext. 230
bscinta@commercialkentucky.com

GREG CHARMOLI

Senior Director
502 589 5150 ext. 238
gcharmoli@commercialkentucky.com

333 E. Main Street, Suite 510
Louisville, KY 40202
+1 502 589 5150
www.CommercialKentucky.com

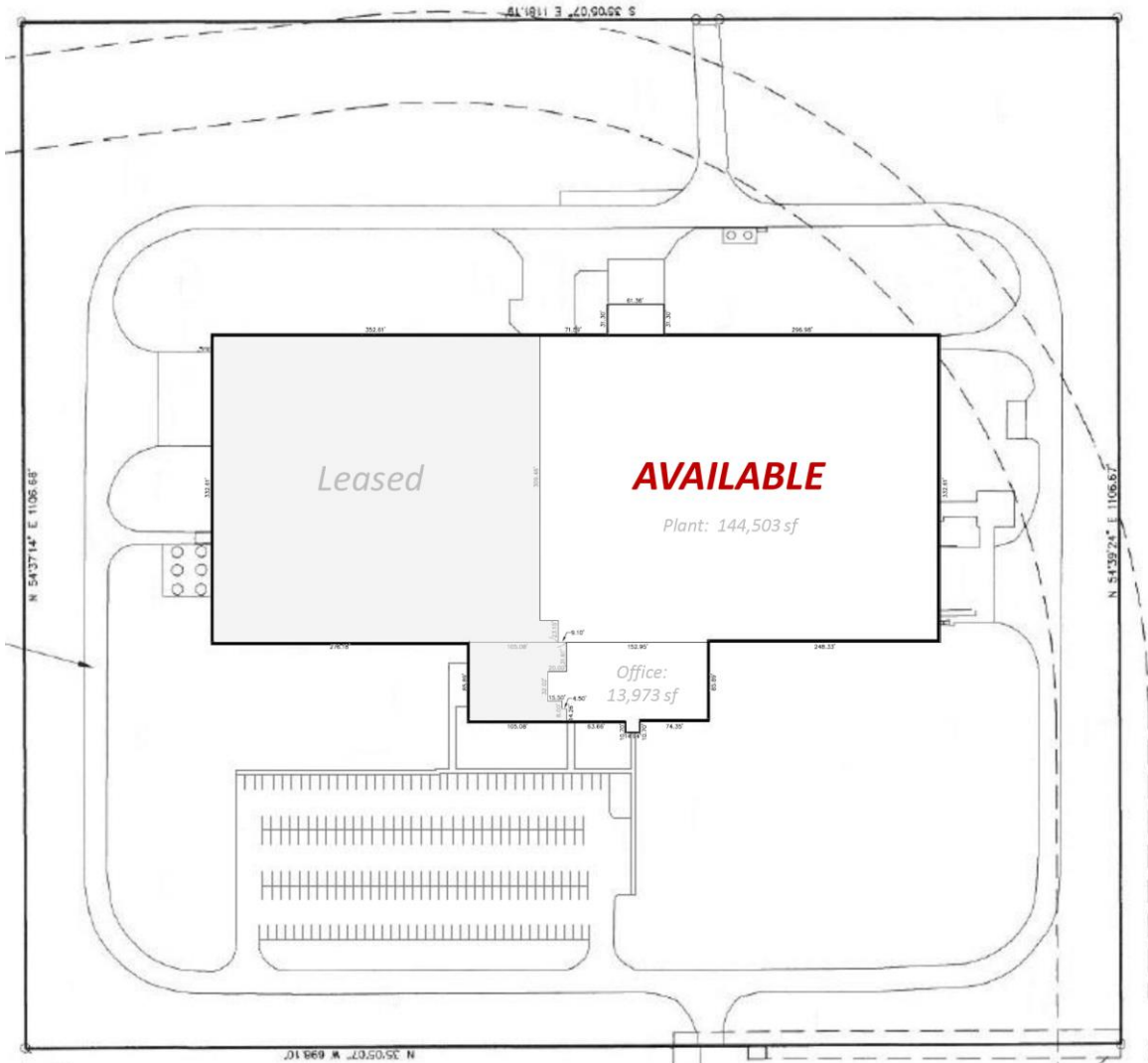
5171 MARITIME ROAD

Jeffersonville, IN 47130

158,440 SF FOR LEASE



SITE PLAN



BLAKE SCINTA, CCIM
Senior Associate
502 589 5150 ext. 230
bscinta@commercialkentucky.com

GREG CHARMOLI
Senior Director
502 589 5150 ext. 238
gcharmoli@commercialkentucky.com

333 E. Main Street, Suite 510
Louisville, KY 40202
+1 502 589 5150
www.CommercialKentucky.com

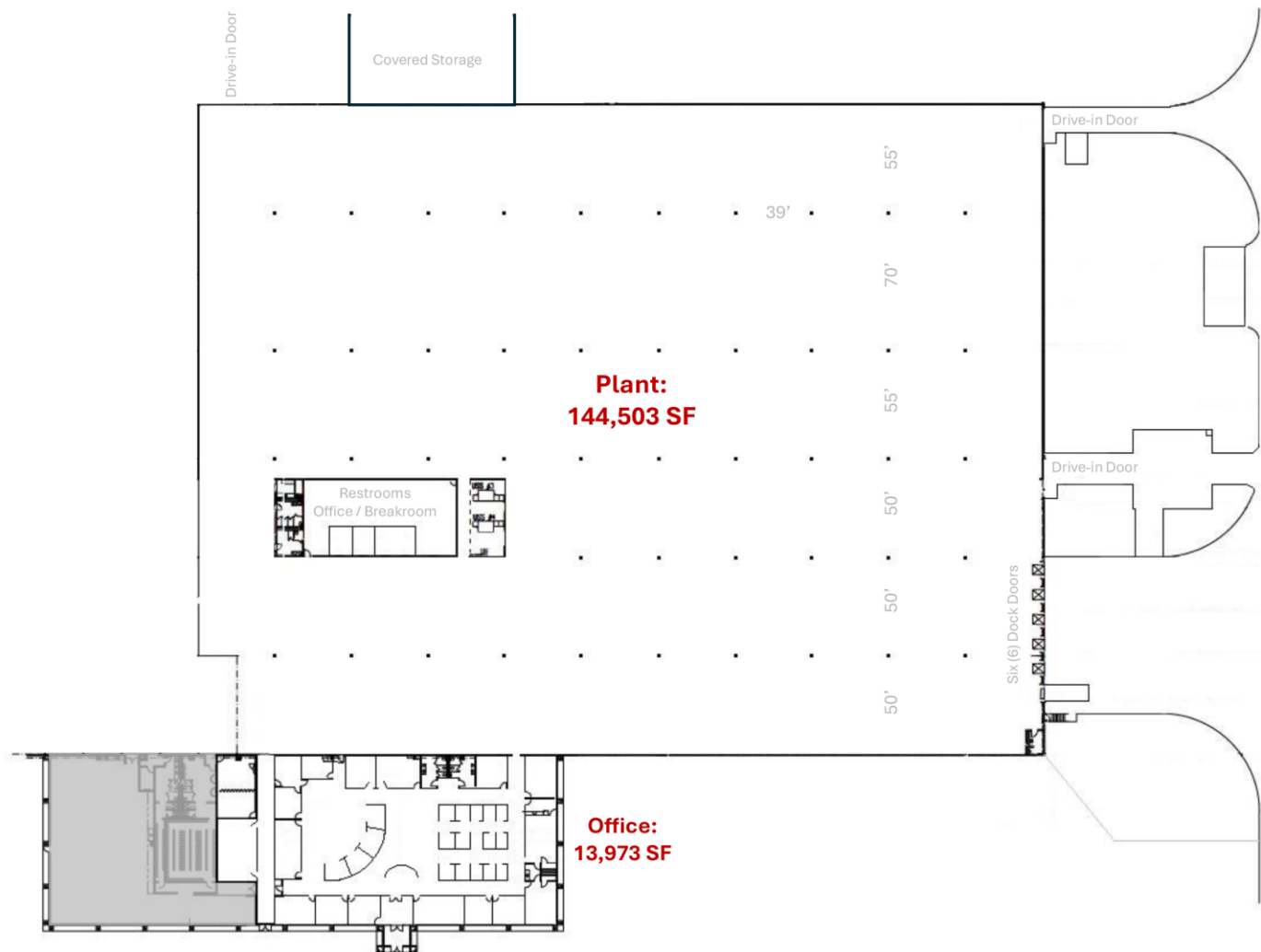
5171 MARITIME ROAD

Jeffersonville, IN 47130

158,440 SF FOR LEASE



PLANT LAYOUT



BLAKE SCINTA, CCIM
Senior Associate
502 589 5150 ext. 230
bscinta@commercialkentucky.com

GREG CHARMOLI
Senior Director
502 589 5150 ext. 238
gcharmoli@commercialkentucky.com

333 E. Main Street, Suite 510
Louisville, KY 40202
+1 502 589 5150
www.CommercialKentucky.com

5171 MARITIME ROAD

Jeffersonville, IN 47130

158,440 SF FOR LEASE



OFFICE LAYOUT



BLAKE SCINTA, CCIM
Senior Associate
502 589 5150 ext. 230
bscinta@commercialkentucky.com

GREG CHARMOLI
Senior Director
502 589 5150 ext. 238
gcharmoli@commercialkentucky.com

333 E. Main Street, Suite 510
Louisville, KY 40202
+1 502 589 5150
www.CommercialKentucky.com