

OFFICE/RETAIL SPACE FOR LEASE

SARATOGA STATION

1821 SARATOGA AVENUE, SAN JOSE, CA



NEW WEST VALLEY OFFICE SUITE

HIGHLIGHTS

SUITE 250: ±711 SF Office

- Highly Visible Location
- Retail Co-Tenants: Mancini's Sleep World, Emerson Dental, Dreamax Academy, Therapydia and Viange Hair
- Office Co-Tenants: Interface Analysis, Metro Real, STRE Solutions, Lu & Wang Corp and C&L Development
- ADA Compliant Restrooms
- Ample Parking
- Illuminated Signage on Building and Monument
- Across the street from El Paseo Shopping Center and Westgate Mall
- Direct Access to Lawrence Expwy & Hwy 85
- All-Guard Security Alarm System



CONTACT

CLARK STEELE

Director
408.436.3653
clark.steele@cushwake.com
LIC #01995379

BYRON RENFRO

President
408.955.1402
brenfro@orchardcommercial.com
LIC #01324378



OFFICE/RETAIL SPACE FOR LEASE

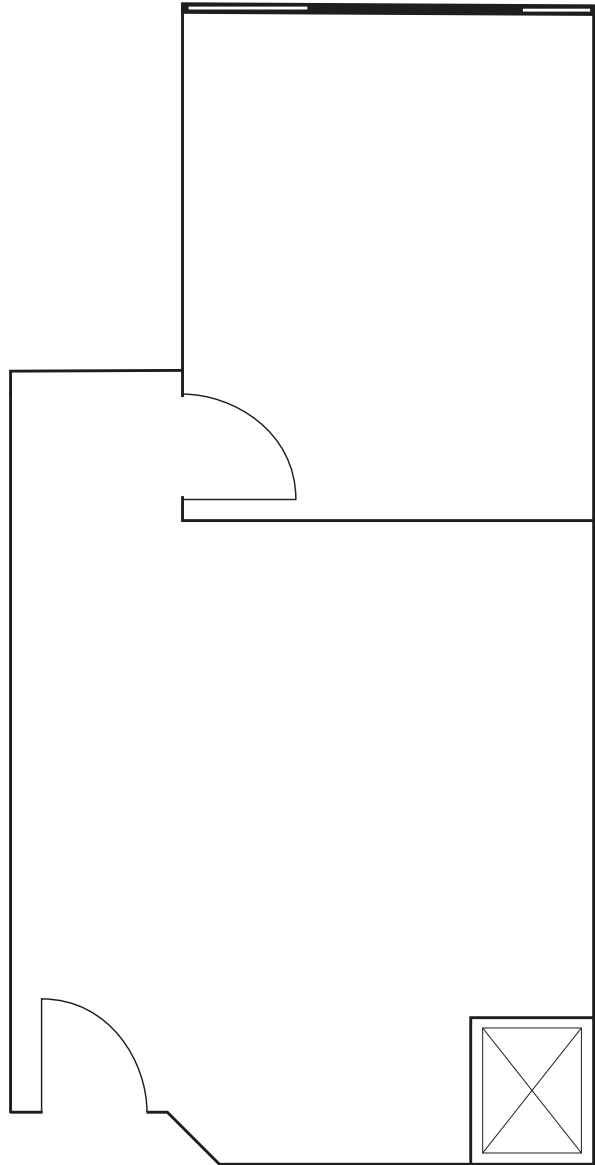
SARATOGA STATION

1821 SARATOGA AVENUE, SAN JOSE, CA

FLOOR PLAN

Suite 250: ±711 SF / Available Now

- 1 Private Office
- Open Area
- Private Entrance
- Shared Kitchen
- Elevator Served
- Common Kitchen Area
- New Lighting
- Market Ready Suite



CONTACT

CLARK STEELE

Director
408.436.3653
clark.steele@cushwake.com
LIC #01995379

BYRON RENFRO

President
408.955.1402
brenfro@orchardcommercial.com
LIC #01324378



OFFICE/RETAIL SPACE FOR LEASE

SARATOGA STATION

1821 SARATOGA AVENUE, SAN JOSE, CA

PHOTO GALLERY



CONTACT

CLARK STEELE

Director
408.436.3653
clark.steele@cushwake.com
LIC #01995379

BYRON RENFRO

President
408.955.1402
brenfro@orchardcommercial.com
LIC #01324378



OFFICE/RETAIL SPACE FOR LEASE

SARATOGA STATION

1821 SARATOGA AVENUE, SAN JOSE, CA

AMENITIES MAP



CONTACT

CLARK STEELE

Director
408.436.3653
clark.steele@cushwake.com
LIC #01995379

BYRON RENFRO

President
408.955.1402
brenfro@orchardcommercial.com
LIC #01324378

