

TRADELANE AIRPORT CENTER - HOUSTON

19051 KENSWICK DRIVE, SUITE 150-170, HUMBLE, TX 77338

BUILDING 3

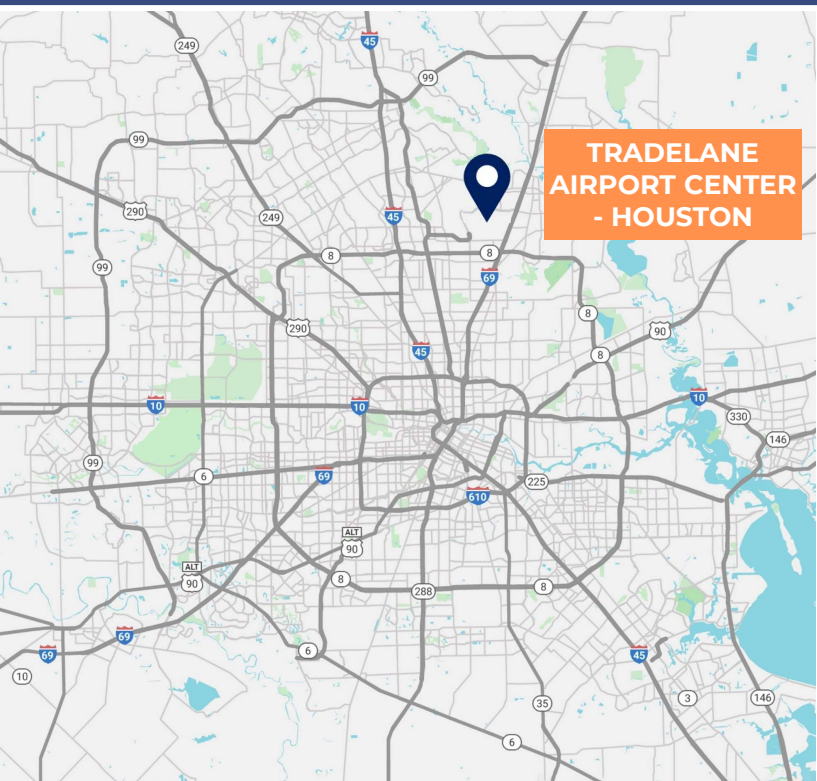


FOR LEASE

LOCATION HIGHLIGHTS:

- Adjacent to George Bush International Airport (IAH)
- Access to Major Thoroughfares, including I-69, I-45, Beltway 8, and FM 1960.
- Desirable Location for Air Cargo Users

20,280 SF



**TRADELANE
AIRPORT CENTER
- HOUSTON**

SPACE FEATURES

20,280 SF AVAILABLE



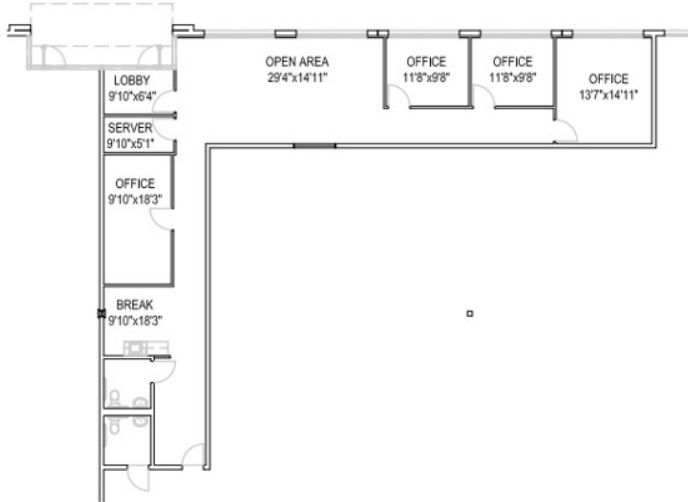
- Suite 150 – 1,000 SF Office
- Suite 170 – 1,846 SF Office
- Total – 2,846 SF Office
- 17,434 SF Warehouse

UNIT FEATURES



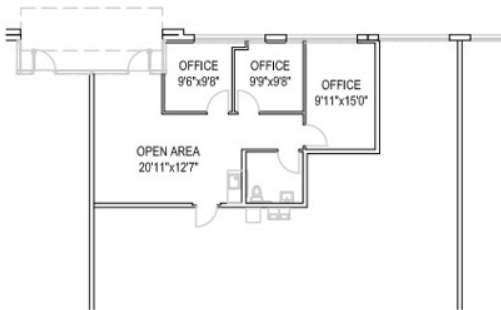
- (8) 9'x10' Dock High Doors
- (1) 12'x14' Dock High Door
- (1) 12'x14' Drive-In Door
- 52' x 40' Column Spacing
- 24' Clear Height
- ESFR Sprinkler System
- Rear Load Configuration
- Ample Parking

20,280 SF – Floor Plan



OFFICE PLAN (WEST)

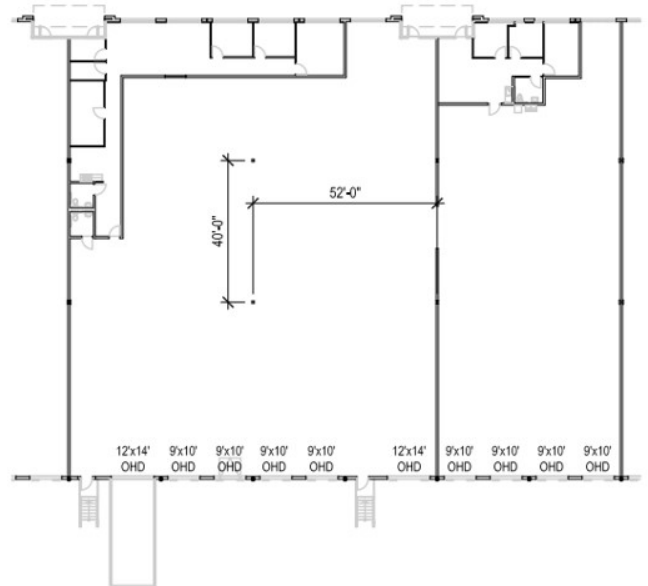
1/16"=1'-0"



OFFICE PLAN (EAST)

1/16"=1'-0"

13,520 SF + 6,760 SF = 20,280 SF



OVERALL LEASE AREA

1/32"=1'-0"



CONTACT US

JOHN KRUSE
MANAGING DIRECTOR

+1 713 304 4919

john.kruse@cushwake.com

CARTER HOLMES
SENIOR ASSOCIATE

+1 713 417 5447

carter.holmes@cushwake.com

KELLY LANDWERMEYER
MANAGING DIRECTOR

+1 713 249 4295

kelly.landwermeyer@cushwake.com