

ONE GRAND CENTRAL PLACE

— 60 EAST 42ND STREET —



14,430 SF Retail Space with LED Signage Facing Grand Central Terminal

Directly across from
Grand Central Terminal

with in-building access to
all mass transportation

750,000+
daily commuters and tourists
at Grand Central Terminal

326,000+
neighborhood office workers
who annually earn a combined
\$11.3 Billion



Light Up One Grand Central Place

3 LED signs
located within
Second Floor
Interior

Approximate Sizes of Screens:

5'2" H x 9'11" L

5'2" H x 11'10" L

5'2" H x 13'8" L



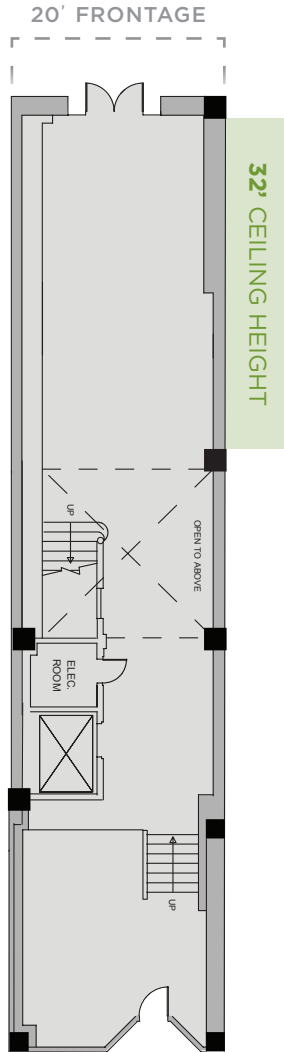
ONE GRAND CENTRAL PLACE

▲ GRAND CENTRAL TERMINAL ▲

GROUND FLOOR

2,187 SF

16'-32' CEILING HEIGHT

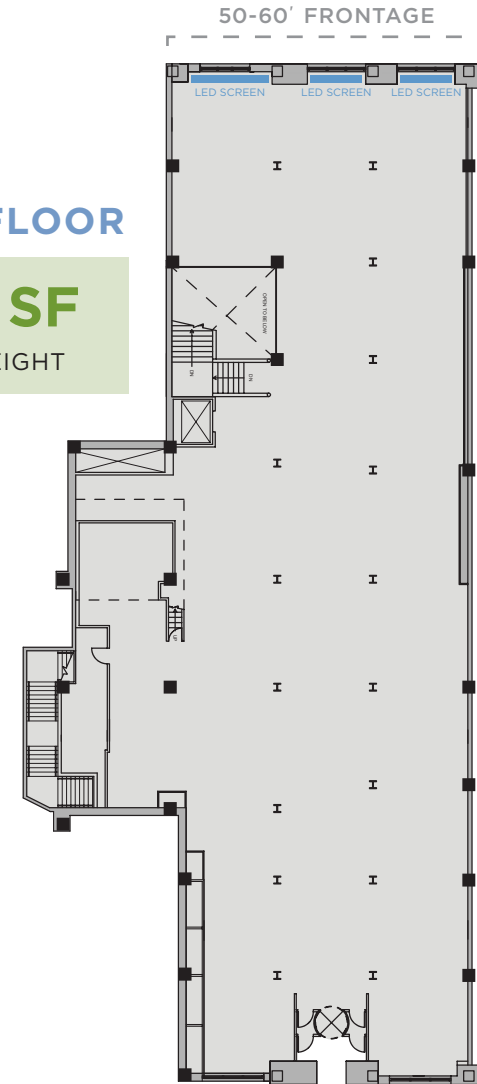


42ND STREET

SECOND FLOOR

12,243 SF

16' CEILING HEIGHT



41ST STREET

▲ ONE GRAND CENTRAL PLACE
ARCANE ENTRANCE ▲

MULTI-LEVEL FLOORPLAN

MADISON AVENUE

PARK AVENUE



ONE GRAND CENTRAL PLACE
RETAIL AT GRAND CENTRAL TERMINAL

CORPORATE NEIGHBORS



TRANSPORTATION HUB



31 commuter & **15** city bus routes

427,000

Metro-North & LIRR commuters*

THE CITY'S BUSIEST SUBWAY STATION:

160,294 subway commuters*

*AVERAGE WEEKDAY



Metro-North Railroad



Long Island Rail Road

ONE GRAND CENTRAL PLACE

— 60 EAST 42ND STREET —



EMPIRE STATE
REALTY TRUST

ESRT
LISTED
NYSE
REBSY

FRED C. POSNIAK
fposniak@esrtreit.com
212.850.2618



CUSHMAN &
WAKEFIELD

KENJI OTA
kenji.ota@cushwake.com
212.841.5909

KATHRYN CRUZ
kathryn.cruz@cushwake.com
212.660.7766

NEIL SETH
neil.seth@cushwake.com
212.841.5063

JENNIFER KONEFSKY
jennifer.konefsky@cushwake.com
212.698.2608

100%
COMMISSION
PAID ON
LEASE
SIGNING