

FOR LEASE

ADVANCED MANUFACTURING BUILDING

2100 LIVINGSTON STREET, OAKLAND



PROPERTY HIGHLIGHTS

- Rare Oakland Embarcadero Cove Location
- ± 23,000 SF Freestanding Building (Footprint)
- ± 1,995 SF 2nd Floor Office Area
- Advanced Manufacturing
- GMP Certified Pharmaceutical Grade
- Sprinklers
- Two (2) Automatic Dock High Doors with Levelers
- Three (3) Automatic Drive In Doors
- 20' Clear Height
- 2,000 Amp 208/120 Volts, 3-Phase, 4 Wire
- Power Well-Distributed 480V Possible
- Eleven (11) On-Site Parking Stalls
- Enhanced Security Building
- Alarm System with Video Monitoring
- LED Lighting
- Multiple Warehouse Floor Drains
- Epoxy Floors
- 6" High Pressure Gas Distribution
- 2" Water Service
- Active Neighborhood Association Group
- Small Enclosed Fenced Yards
- Easy Freeway Access to I-880
- Zoning: D-CE-4/S-19
- Available: 7/1/2024
- Building Suitable for Warehouse, R&D, Manufacturing and Food Processing Uses

**** Building is Occupied. Do Not Disturb Tenant. Shown By Appointment only. ****

Joyce Cunningham

Managing Director

510 267 6017

joyce.cunningham@cushwake.com

LIC #00868171

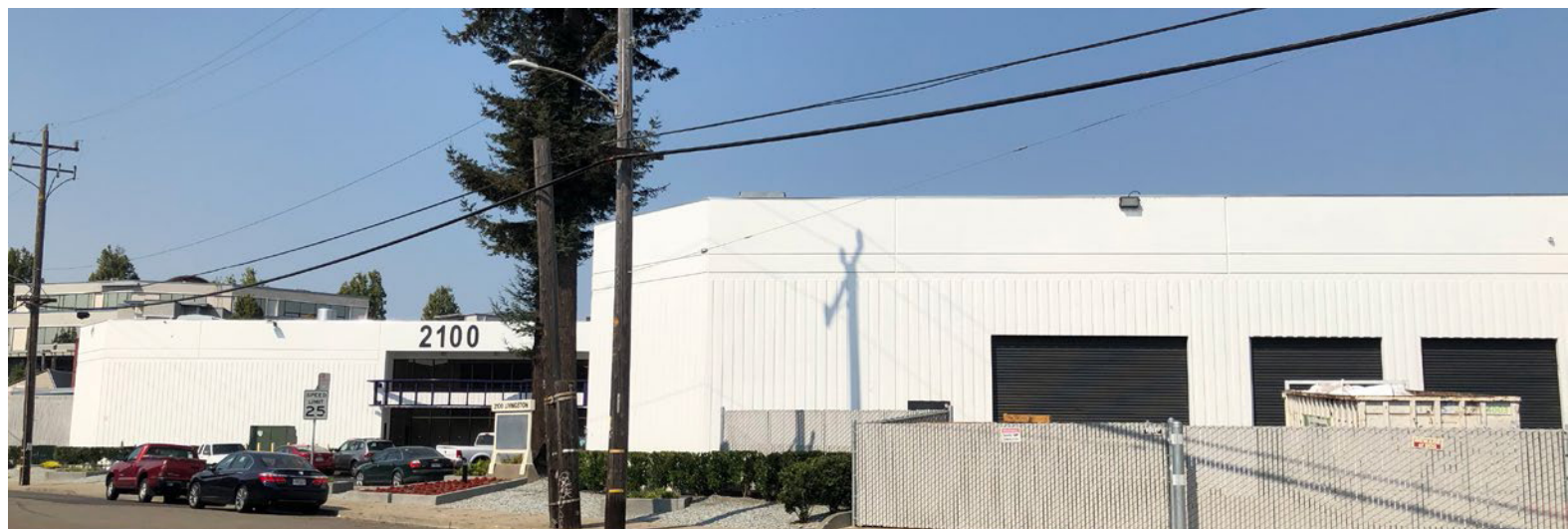
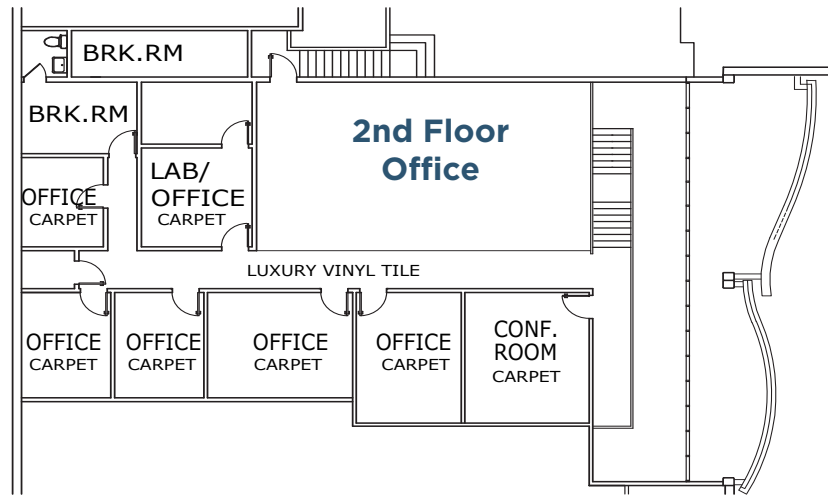
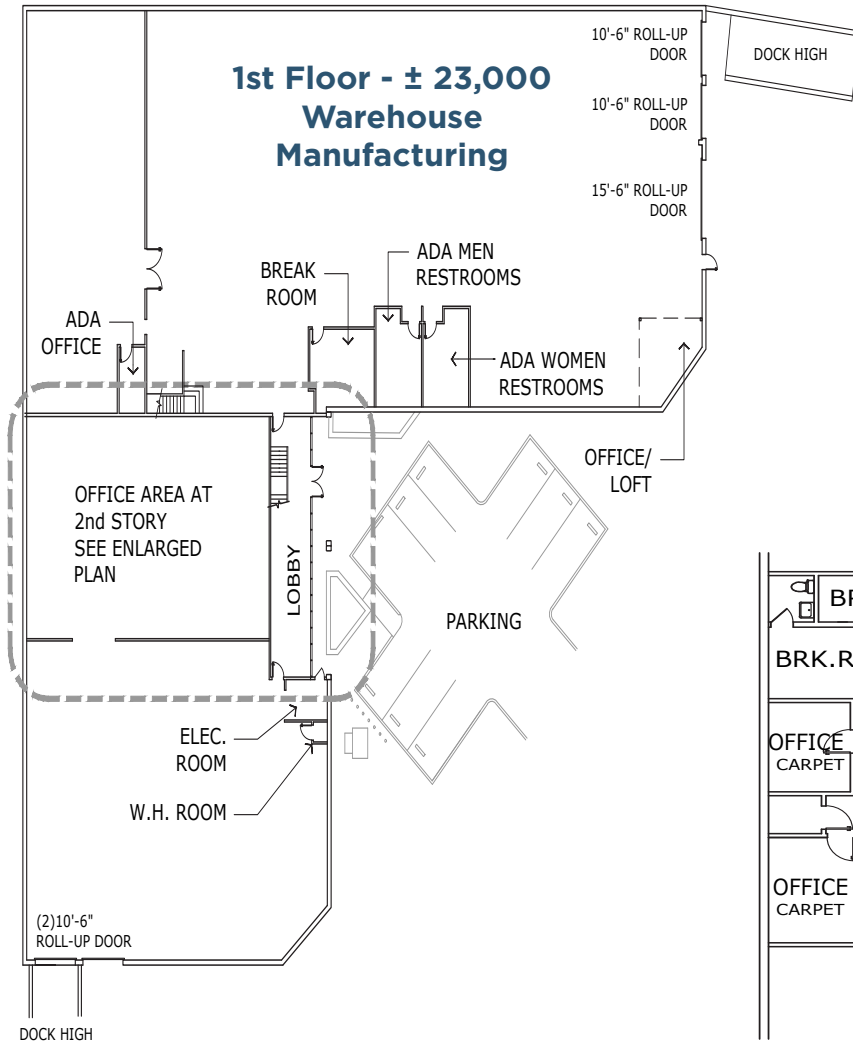


FOR LEASE

ADVANCED MANUFACTURING BUILDING

2100 LIVINGSTON STREET, OAKLAND

BUILDING FLOOR PLAN



FOR LEASE

ADVANCED MANUFACTURING BUILDING

2100 LIVINGSTON STREET, OAKLAND

AERIAL



Joyce Cunningham

Managing Director

510 267 6017

joyce.cunningham@cushwake.com

LIC #00868171

