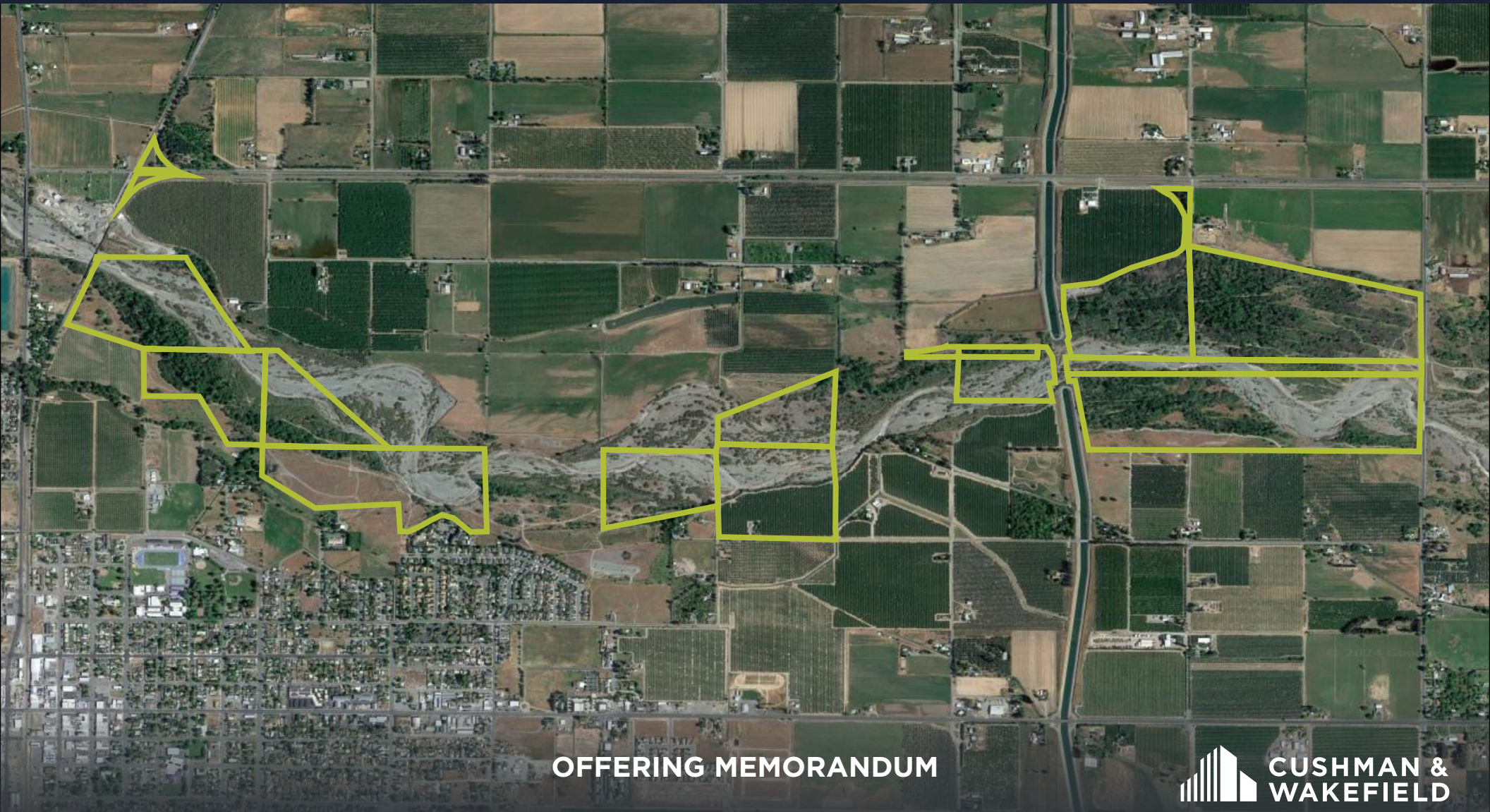


FOR SALE
524.68 ± ACRES

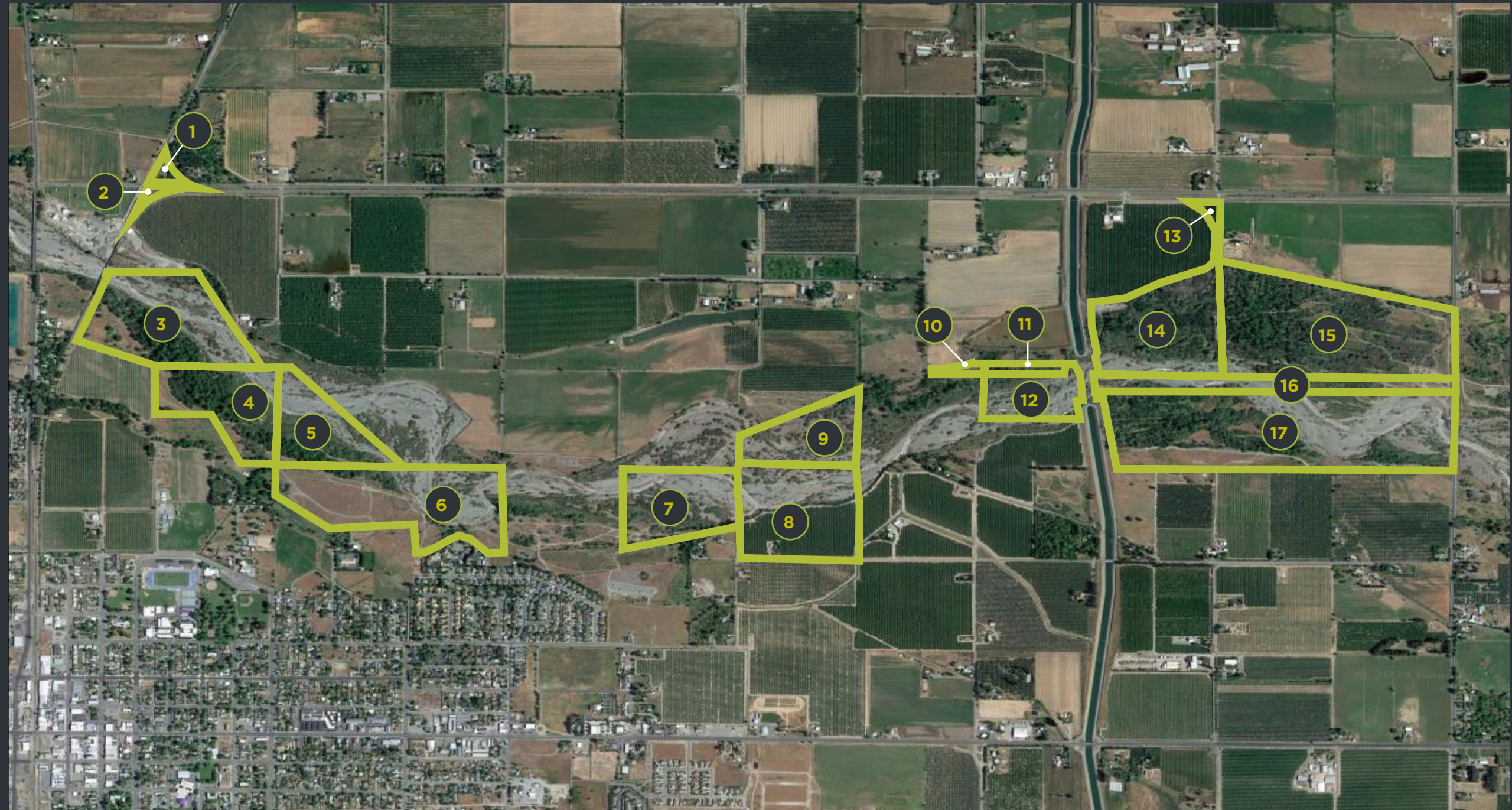
ORLAND, CALIFORNIA



OFFERING MEMORANDUM



	APN	Size (AC)	Zoning	GP Designation
1	044-240-021-000	1.68	AE-20	GENERAL AGRICULTURE
2	044-300-017-000	2.95	AE-20	AG TRANSITION
3	044-300-008-000	48.2	AE-20	AG TRANSITION
4	046-010-004-000	26.25	AE-20	AG TRANSITION
5	046-020-001-000	25	AE-20	AG TRANSITION
6	046-060-001-000	58.47	AE-20	AG TRANSITION
7	046-070-002-000	28.37	AE-20	AG TRANSITION
8	046-100-004-000	17.05	AE-20	GENERAL AGRICULTURE/ URBAN RESERVE
9	046-100-002-000	22.51	AE-20	GENERAL AGRICULTURE
10	044-320-013-000	0.1	AE-20	GENERAL AGRICULTURE
11	044-320-014-000	5.13	AE-20	GENERAL AGRICULTURE
12	046-110-016-000	13.86	AE-20	GENERAL AGRICULTURE
13	044-320-004-000	1.7	AE-20	GENERAL AGRICULTURE
14	044-320-011-000	55.63	AE-20	GENERAL AGRICULTURE
15	044-320-012-000	80.49	AE-20	GENERAL AGRICULTURE
16	046-110-014-000	18.3	AE-20	GENERAL AGRICULTURE
17	046-110-015-000	99.9	AE-20	GENERAL AGRICULTURE

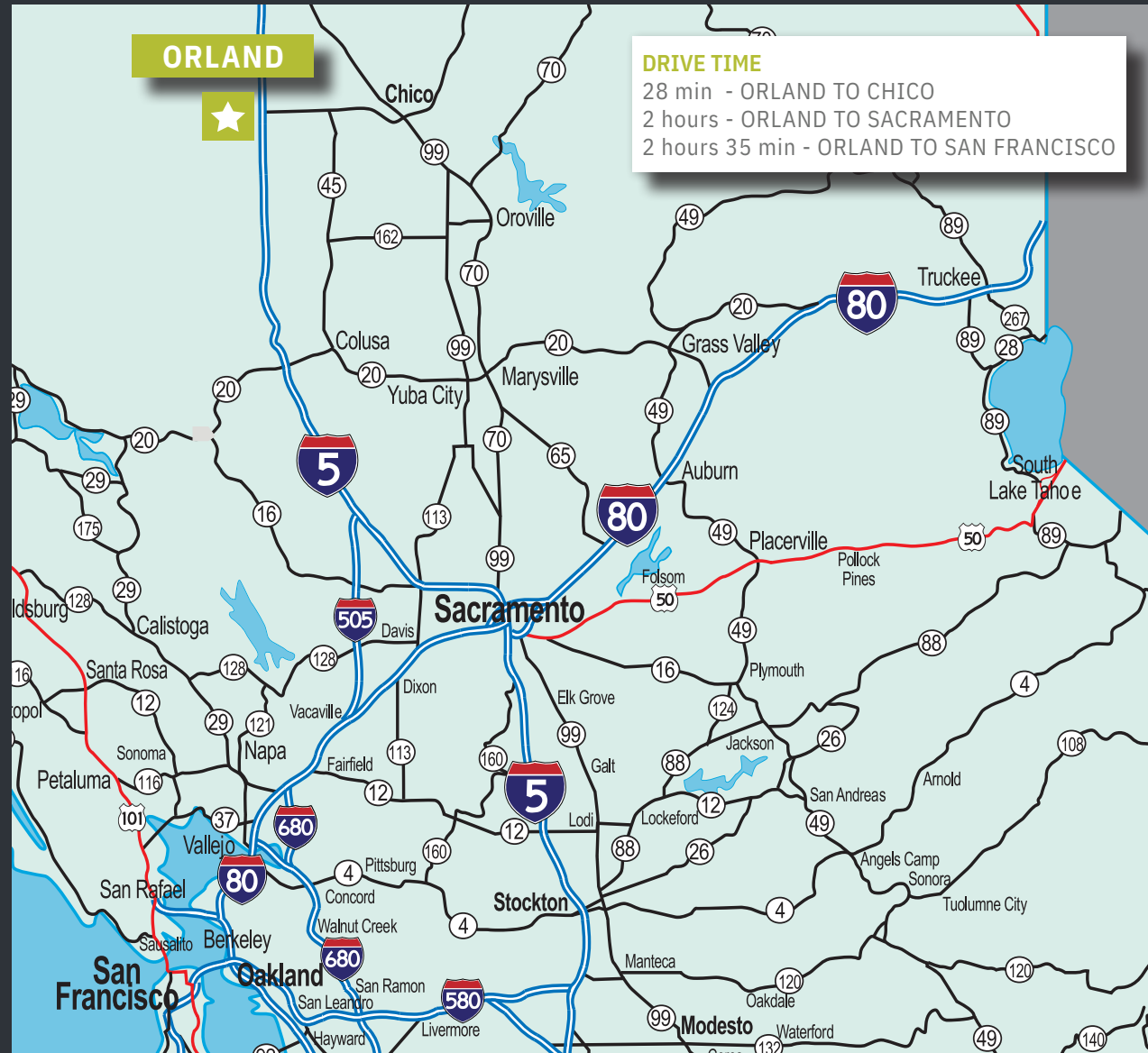


Located in Glenn County, the City of Orland is the most populous and fastest growing city in Glenn County with a population of approximately 8,200 residents. Orland is located in the northern Sacramento Valley, County of Glenn area, along Interstate 5 and US99W, sixty miles south of Redding and 100 miles north of Sacramento.

Size:
524.68± AC

Land Use:
Approximately 350+ acres of AE-20 zoning with a General Plan designation of General Agricultural.

Sale Price:
Call Broker



PROPERTY INFORMATION

AMENITY MAP

Exclusive Listing Agents

JOHN KAUFMAN

Senior Director

916 288 4562

john.kaufman@cushwake.com

CA Lic. #01271163

TOM CHRISTIAN

Executive Managing Director

415 509 8875

tom.christian@cushwake.com

CA Lic. #00890910



CUSHMAN & WAKEFIELD
400 CAPITOL MALL STE 1800
SACRAMENTO, CA 95814
+1 916 288 4800
www.cushmanwakefield.com

©2024 Cushman & Wakefield. All rights reserved. The information contained in this communication is strictly confidential. This information has been obtained from sources believed to be reliable but has not been verified. NO WARRANTY OR REPRESENTATION, EXPRESS OR IMPLIED, IS MADE AS TO THE CONDITION OF THE PROPERTY (OR PROPERTIES) REFERENCED HEREIN OR AS TO THE ACCURACY OR COMPLETENESS OF THE INFORMATION CONTAINED HEREIN, AND SAME IS SUBMITTED SUBJECT TO ERRORS, OMISSIONS, CHANGE OF PRICE, RENTAL OR OTHER CONDITIONS, WITHDRAWAL WITHOUT NOTICE, AND TO ANY SPECIAL LISTING CONDITIONS IMPOSED BY THE PROPERTY OWNER(S). ANY PROJECTIONS, OPINIONS OR ESTIMATES ARE SUBJECT TO UNCERTAINTY AND DO NOT SIGNIFY CURRENT OR FUTURE PROPERTY PERFORMANCE.