

RETAIL/WAREHOUSE SPACE FOR LEASE



**Property Highlights**

- Size: 5,900 SF
  - » Retail: 4,108 SF
  - » Warehouse: 1,792 SF
- 1 Overhead door
- Easy access to I-15
- High traffic counts on Riverdale Rd.
- Possible pick-up window
- Unfinished basement great for storage
- Call for pricing



**Julie Brown**  
Associate  
+1 801 784 5317  
julie.brown@cushwake.com

**April Hartzell**  
Office Manager  
+1 801 784 5319  
april.hartzell@cushwake.com

372 24<sup>th</sup> Street, Suite 320  
Ogden, Utah 84401  
Main +1 801 525 3000  
Fax +1 801 525 9596  
**cushmanwakefield.com**



FOR LEASE

**Americarpet**

1152 West Riverdale Road, Riverdale, Utah



## Demographics

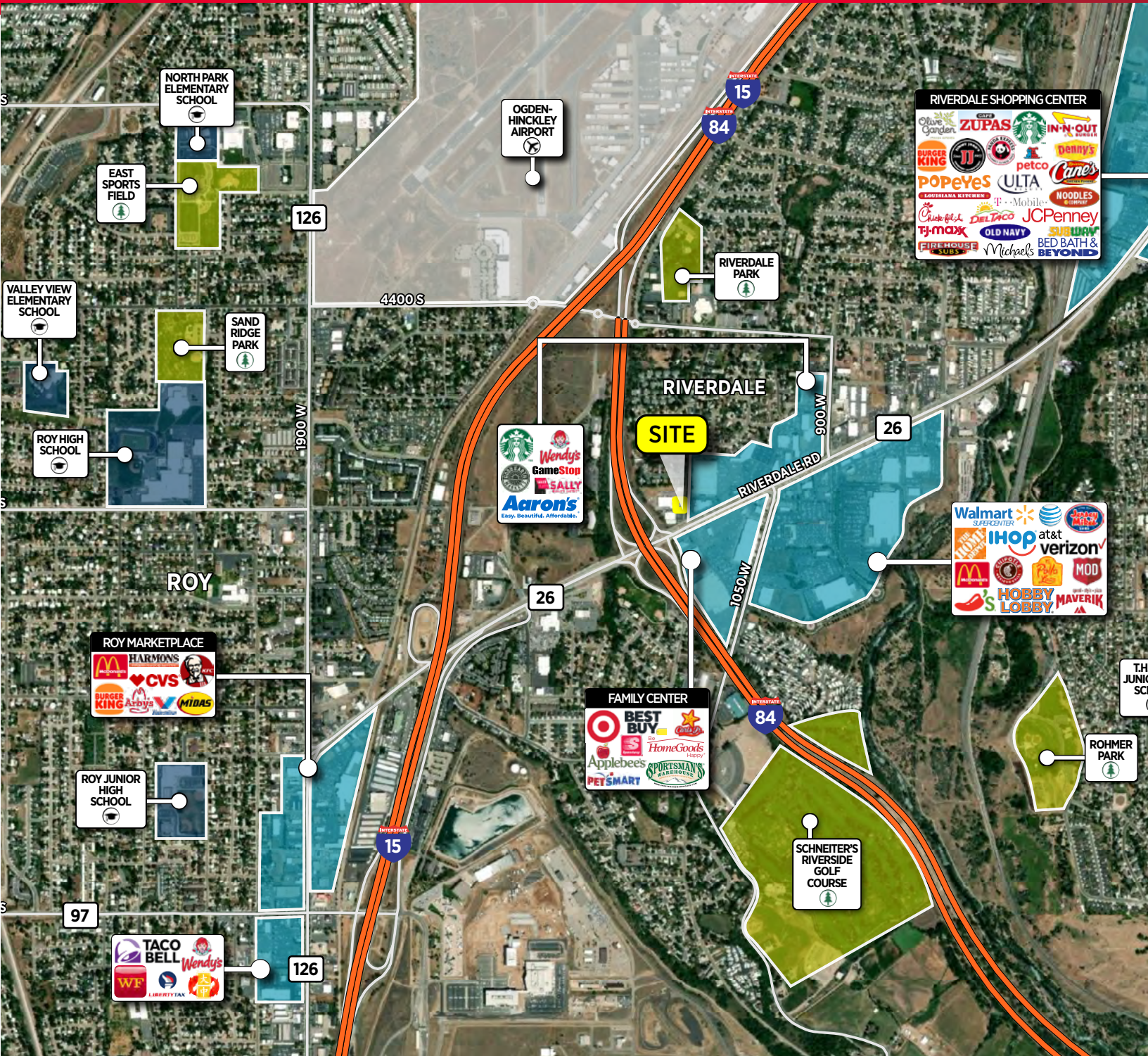
	1 Mile	3 Mile	5 Mile
Estimated Population (2022)	8,687	79,638	206,175
Projected Population (2027)	8,821	82,137	213,900
Estimated Households (2022)	3,339	27,736	69,847
Projected Households (2027)	3,410	28,741	72,678
Est. Median Household Income (2022)	\$66,813	\$71,940	\$74,443
Est. Avg. Household Income (2022)	\$78,368	\$87,334	\$92,500
Est. Per Capita Household Income (2022)	\$29,343	\$30,112	\$31,451

Source: U.S. Census Bureau, Census 2010 Data. Esri forecasts for 2022 and 2027.

**Julie Brown**  
Associate  
+1 801 784 5317  
julie.brown@cushwake.com

**April Hartzell**  
Office Manager  
+1 801 784 5319  
april.hartzell@cushwake.com

372 24<sup>th</sup> Street, Suite 320  
Ogden, Utah 84401  
Main +1 801 525 3000  
Fax +1 801 525 9596  
**cushmanwakefield.com**



**Julie Brown**  
Associate  
+1 801 784 5317  
julie.brown@cushwake.com

**April Hartzell**  
Office Manager  
+1 801 784 5319  
april.hartzell@cushwake.com

372 24<sup>th</sup> Street, Suite 320  
Ogden, Utah 84401  
Main +1 801 525 3000  
Fax +1 801 525 9596  
cushmanwakefield.com