

# 1710 INDUSTRIAL RD

SAN CARLOS, CA

±17,410 SF

FLEX WAREHOUSE  
OFFICE FACILITY  
FOR LEASE



**MARC POPE**  
Vice Chair  
+1 650 401 2131  
[marc.pope@cushwake.com](mailto:marc.pope@cushwake.com)

**GARY BOITANO**  
Managing Director  
+1 650 401 2122  
[gary.boitano@cushwake.com](mailto:gary.boitano@cushwake.com)

**CHRIS BAKER**  
Managing Director  
+1 650 302 0266  
[chris.r.baker@cushwake.com](mailto:chris.r.baker@cushwake.com)



# 1710 INDUSTRIAL ROAD

SAN CARLOS, CA

**±17,410 SF**

## PROPERTY HIGHLIGHTS

**FLEX WAREHOUSE  
OFFICE FACILITY  
FOR LEASE**

### PROPOSED BUILDING AREA

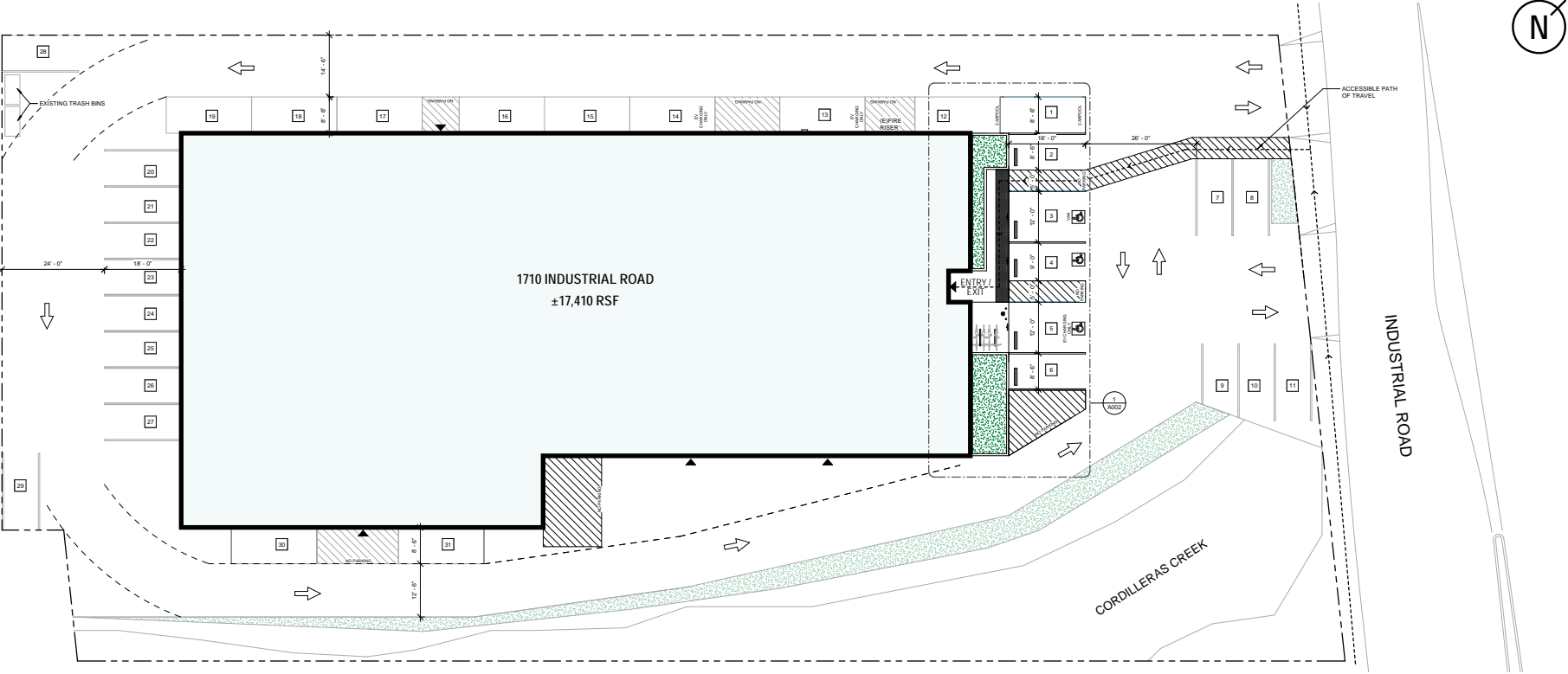
<b>LEVEL 1</b>	<b>±9,236 SF - Office</b> <b>±4,317 SF - Manufacturing</b> <b>±1,272 SF - Warehouse</b>
<b>LEVEL 2</b>	<b>±2,585 SF - Office</b>
<b>TOTAL</b>	<b>±17,410 SF</b>

- Stand Alone Building
- Shipping & Receiving
- 800 Amps, 208Y/120V, 3 Phase 4-Wire Power
- 31 On-Site Parking Stalls
- 2 EV Charging Stalls
- Near Downtown San Carlos and Caltrain
- Immediate Access to Hwy 101
- New Building Improvements Underway
- Deliverable Early 2025

# 1710 INDUSTRIAL ROAD

SAN CARLOS, CA

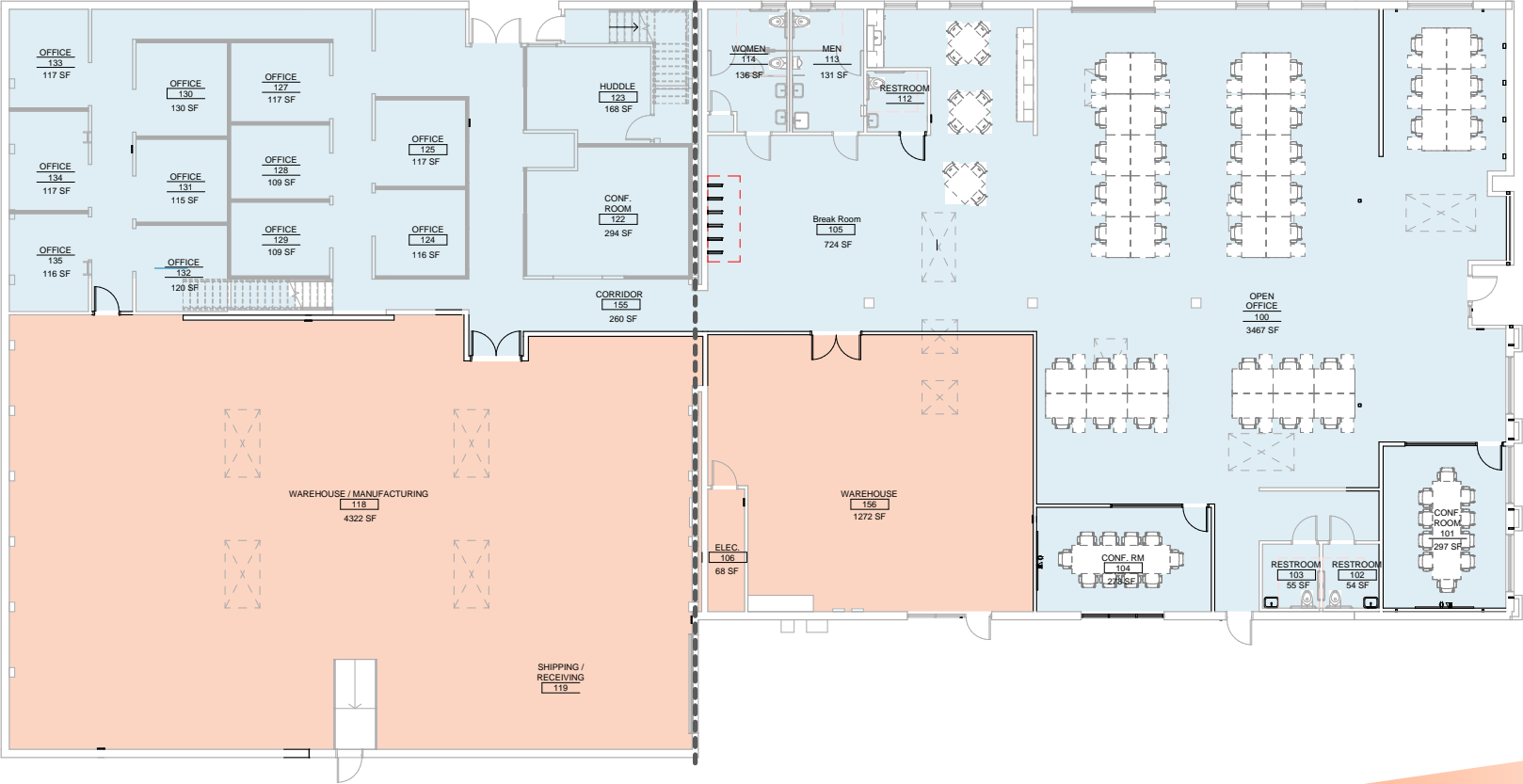
## SITE PLAN



# 1710 INDUSTRIAL ROAD

SAN CARLOS, CA

## FLOOR PLAN - GROUND LEVEL

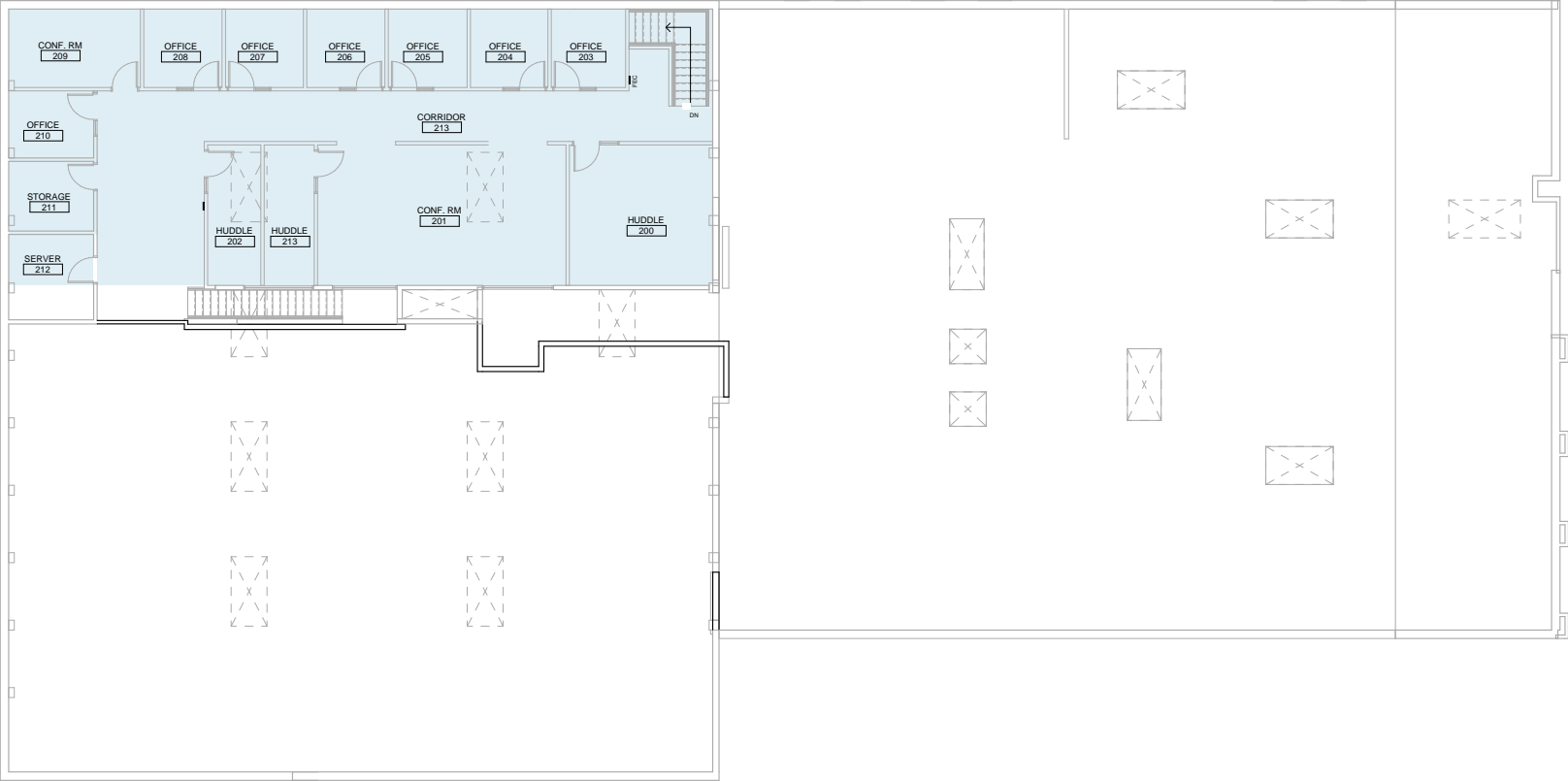


INDUSTRIAL RD

# 1710 INDUSTRIAL ROAD

SAN CARLOS, CA

## FLOOR PLAN - SECOND LEVEL



INDUSTRIAL RD

# 1710 INDUSTRIAL ROAD

SAN CARLOS, CA

SAN MATEO

BELMONT

SAN CARLOS

REDWOOD SHORES

SAN FRANCISCO BAY

Bair Island State Marine Park

Westpoint Harbor

1710 INDUSTRIAL ROAD

Walgreens TRADER JOE'S

NOB HILL FOODS  
STARBUCKS  
Bay Club CHASE  
FIVE GUYS  
Mendocino Farms  
PROVIDENT CREDIT UNION  
Bank of America

STARBUCKS  
CHIPOTLE MEXICAN GRILL  
Office DEPOT  
WINGS-LOVE  
BEST BUY  
West Marine  
REI COOP  
Jamba Juice

Lucky

KOHL'S  
Sports Basement  
DOLLAR TREE  
JOANN  
planet fitness  
STARBUCKS  
Applebee's GRILL + BAR  
TACO BELL  
SUBWAY

THE HOME DEPOT  
DOLLAR TREE

IN-N-OUT BURGER



# 1710 INDUSTRIAL RD

SAN CARLOS, CA 94070

---

**MARC POPE**  
Vice Chair  
+1 650 401 2131  
[marc.pope@cushwake.com](mailto:marc.pope@cushwake.com)

**GARY BOITANO**  
Managing Director  
+1 650 401 2122  
[gary.boitano@cushwake.com](mailto:gary.boitano@cushwake.com)

**CHRIS BAKER**  
Managing Director  
+1 650 320 0266  
[chris.r.baker@cushwake.com](mailto:chris.r.baker@cushwake.com)



1350 Bayshore Highway, Suite 900, Burlingame, CA 94010 | [Cushmanwakefield.com](https://www.Cushmanwakefield.com)

©2024 Cushman & Wakefield. All rights reserved. The information contained in this communication is strictly confidential. This information has been obtained from sources believed to be reliable but has not been verified. NO WARRANTY OR REPRESENTATION, EXPRESS OR IMPLIED, IS MADE AS TO THE CONDITION OF THE PROPERTY (OR PROPERTIES) REFERENCED HEREIN OR AS TO THE ACCURACY OR COMPLETENESS OF THE INFORMATION CONTAINED HEREIN, AND SAME IS SUBMITTED SUBJECT TO ERRORS, OMISSIONS, CHANGE OF PRICE, RENTAL OR OTHER CONDITIONS, WITHDRAWAL WITHOUT NOTICE, AND TO ANY SPECIAL LISTING CONDITIONS IMPOSED BY THE PROPERTY OWNER(S). ANY PROJECTIONS, OPINIONS OR ESTIMATES ARE SUBJECT TO UNCERTAINTY AND DO NOT SIGNIFY CURRENT OR FUTURE PROPERTY PERFORMANCE.