



38,249 SF AVAILABLE FOR LEASE  
880 CORPORATE WOODS PARKWAY  
VERNON HILLS, IL



### Property Highlights

Building Available: 38,249 SF

Office Available: ±4,000 SF

Land Area: 3.33 acres

Loading: 4 interior docks

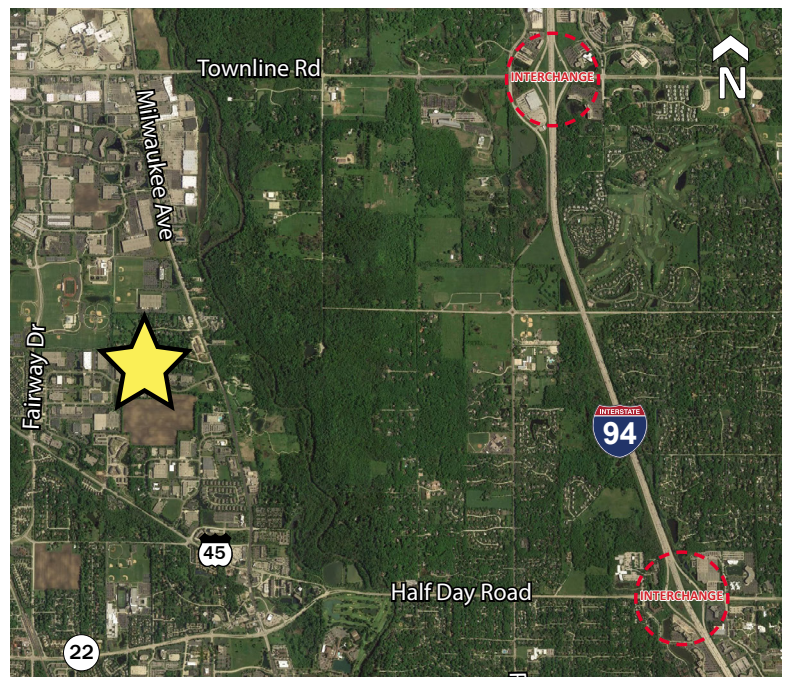
Ceiling Height: 25' (racked)

Power: 1200 amps

Parking: 49 Spaces (expandable)

Year Built: 1989

Lease Rate: Subject to Offer



#### Steve Stone

Managing Director  
+1 847 720 1364  
steve.stone@cushwake.com

#### Eric Fischer

Executive Managing Director  
+1 847 720 1369  
eric.fischer@cushwake.com

#### Brett Kroner

Vice Chair  
+1 847 720 1367  
brett.kroner@cushwake.com

#### Marc Samuels

Director  
+1 847 720 1368  
marc.samuels@cushwake.com



**CUSHMAN &  
WAKEFIELD**

**38,249 SF AVAILABLE FOR LEASE  
880 CORPORATE WOODS PARKWAY  
VERNON HILLS, IL**



**Steve Stone**  
Managing Director  
+1 847 720 1364  
steve.stone@cushwake.com

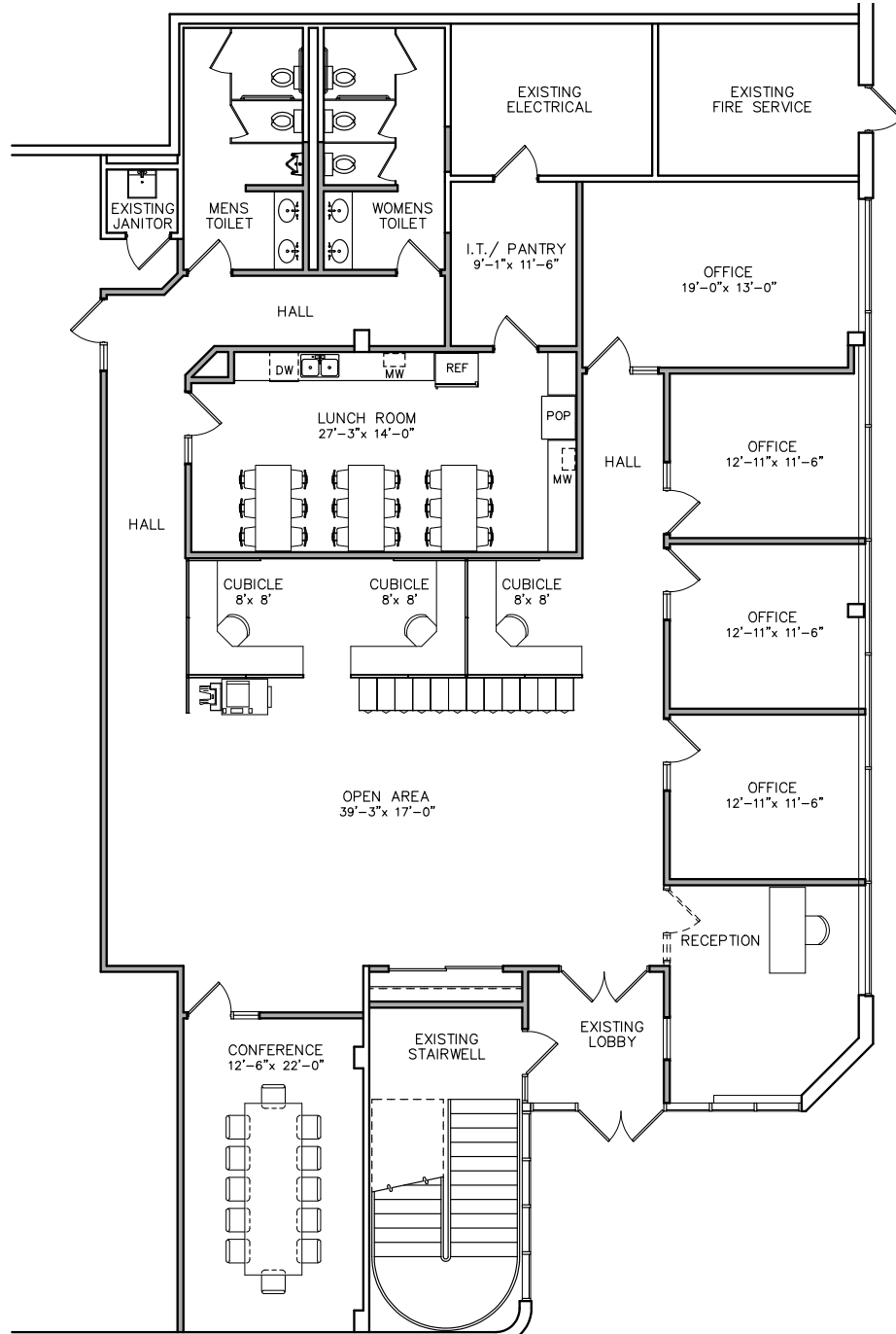
**Eric Fischer**  
Executive Managing Director  
+1 847 720 1369  
eric.fischer@cushwake.com

**Brett Kroner**  
Vice Chair  
+1 847 720 1367  
brett.kroner@cushwake.com

**Marc Samuels**  
Director  
+1 847 720 1368  
marc.samuels@cushwake.com



**OFFICE PLAN**



- Potential for future building or parking expansion
- Located in the Corporate Woods Business Park
- Corporate neighbors include: Zebra Technologies, Fuji America Corp. and Mitsubishi Electric Automation
- Less than 4 miles from I-94 via Half Day Road (Route 22)

**Steve Stone**  
 Managing Director  
 +1 847 720 1364  
 steve.stone@cushwake.com

**Eric Fischer**  
 Executive Managing Director  
 +1 847 720 1369  
 eric.fischer@cushwake.com

**Brett Kroner**  
 Vice Chair  
 +1 847 720 1367  
 brett.kroner@cushwake.com

**Marc Samuels**  
 Director  
 +1 847 720 1368  
 marc.samuels@cushwake.com