



6,875 RSF AVAILABLE FOR SUBLEASE

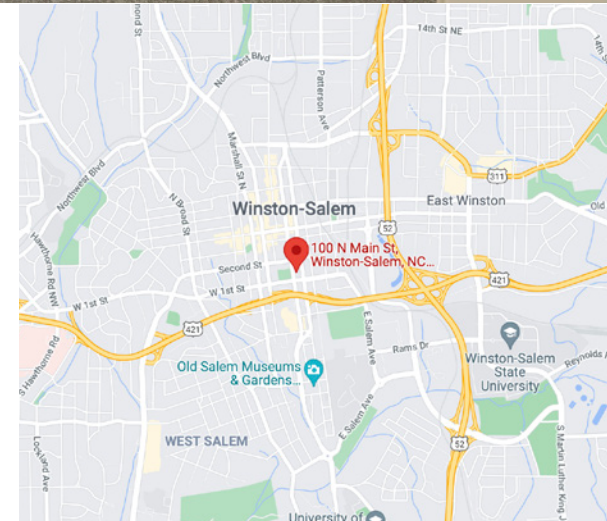
Property Highlights

- **100 N Main Street Suite 2102**
- Asking Rate: \$18.50 psf full service
- 6,875 RSF Available for Sublease
- Sublease Expiration Date: Dec. 31, 2029
- Furniture Available

Bobby Finch
Executive Director
+1 336 812 3303
bobby.finch@cushwake.com

William Woltz
Executive Managing Director
+1 336 821 3824
william.woltz@cushwake.com

121-D Reynolda Village
Winston-Salem, NC 27106 | USA
Main +1 336 668 9999
Fax +1 336 668 0888
cushmanwakefield.com

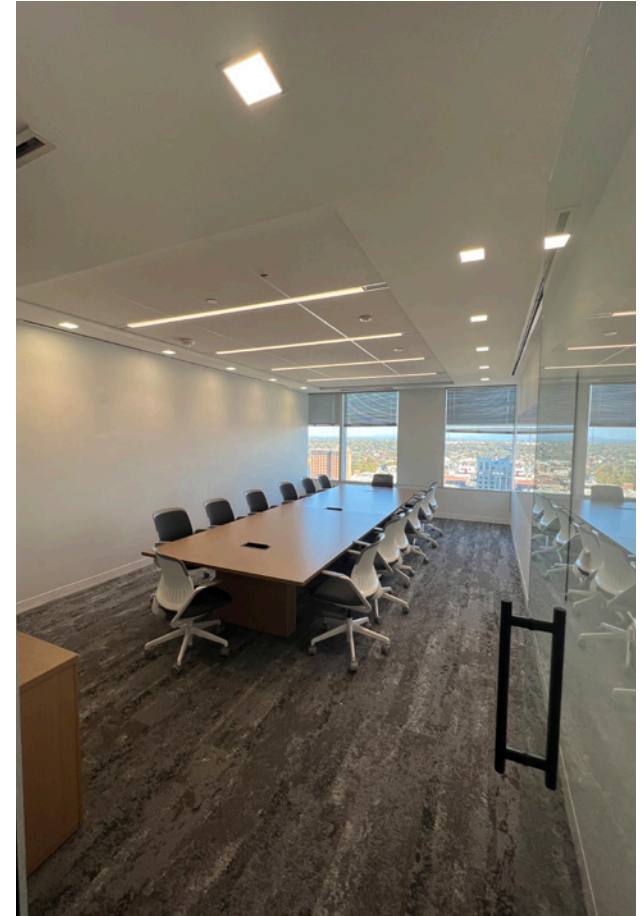
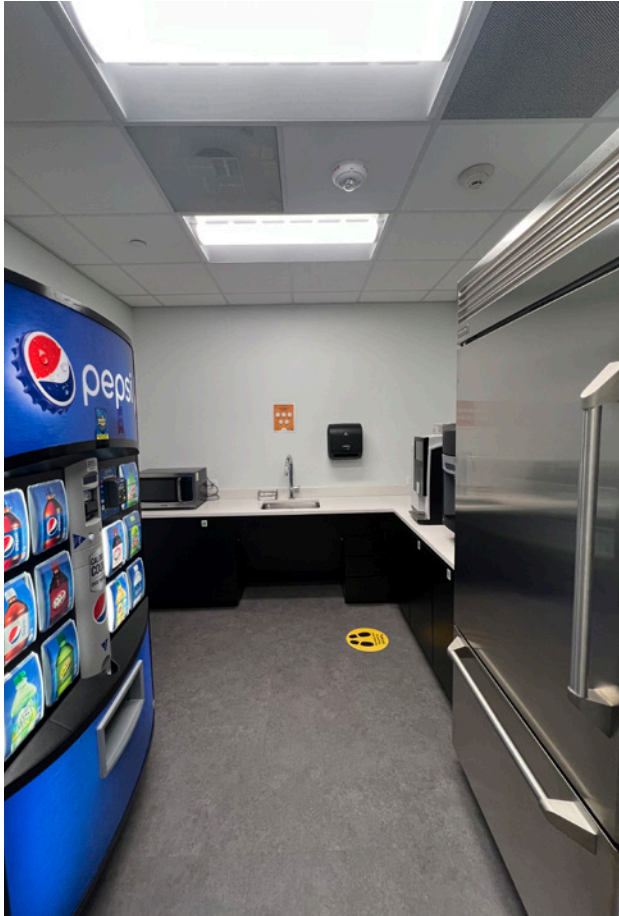




Bobby Finch
Executive Director
+1 336 812 3303
bobby.finch@cushwake.com

William Woltz
Executive Managing Director
+1 336 821 3824
william.woltz@cushwake.com

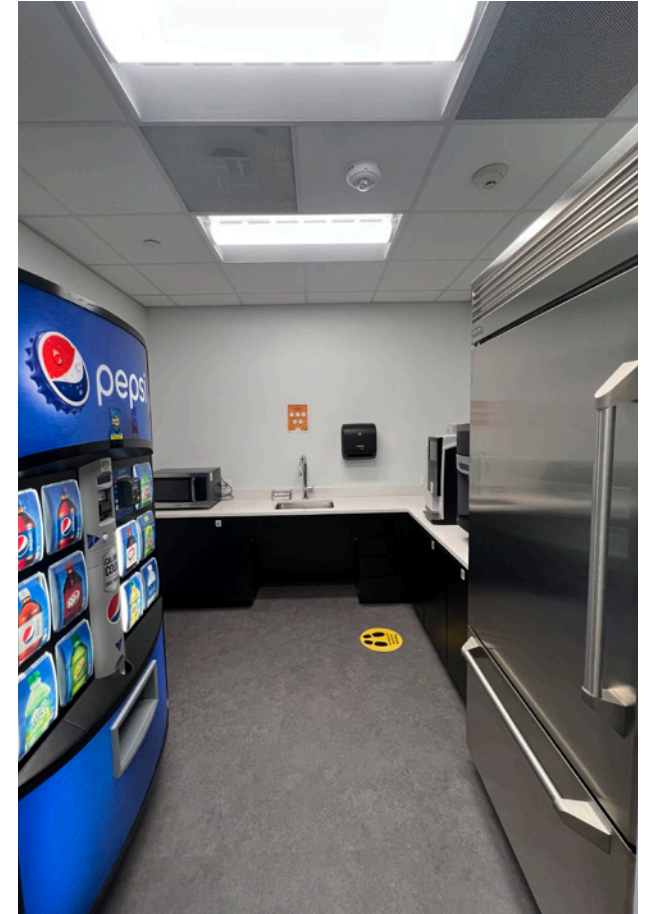
121-D Reynolda Village
Winston-Salem, NC 27106 | USA
Main +1 336 668 9999
Fax +1 336 668 0888
cushmanwakefield.com



Bobby Finch
Executive Director
+1 336 812 3303
bobby.finch@cushwake.com

William Woltz
Executive Managing Director
+1 336 821 3824
william.woltz@cushwake.com

121-D Reynolda Village
Winston-Salem, NC 27106 | USA
Main +1 336 668 9999
Fax +1 336 668 0888
cushmanwakefield.com



Bobby Finch
Executive Director
+1 336 812 3303
bobby.finch@cushwake.com

William Woltz
Executive Managing Director
+1 336 821 3824
william.woltz@cushwake.com

121-D Reynolda Village
Winston-Salem, NC 27106 | USA
Main +1 336 668 9999
Fax +1 336 668 0888
cushmanwakefield.com

VIEW FROM SUBLEASE SPACE - **LOOKING EAST**



Bobby Finch
Executive Director
+1 336 812 3303
bobby.finch@cushwake.com

William Woltz
Executive Managing Director
+1 336 821 3824
william.woltz@cushwake.com

121-D Reynolda Village
Winston-Salem, NC 27106 | USA
Main +1 336 668 9999
Fax +1 336 668 0888
cushmanwakefield.com

VIEW FROM SUBLEASE SPACE - **LOOKING WEST**



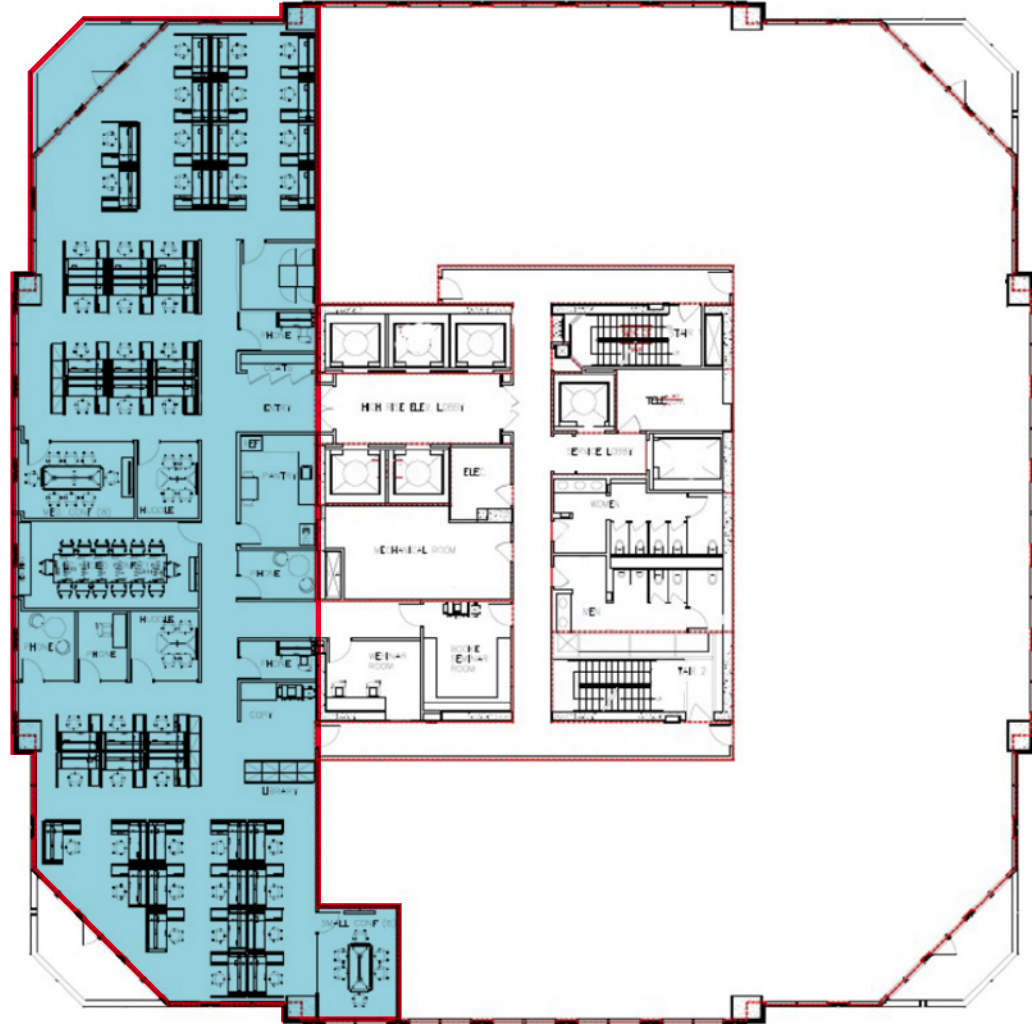
Bobby Finch
Executive Director
+1 336 812 3303
bobby.finch@cushwake.com

William Woltz
Executive Managing Director
+1 336 821 3824
william.woltz@cushwake.com

121-D Reynolda Village
Winston-Salem, NC 27106 | USA
Main +1 336 668 9999
Fax +1 336 668 0888
cushmanwakefield.com

21ST FLOOR

6,875 RSF AVAILABLE FOR SUBLEASE



Bobby Finch
Executive Director
+1 336 812 3303
bobby.finch@cushwake.com

William Woltz
Executive Managing Director
+1 336 821 3824
william.woltz@cushwake.com

121-D Reynolda Village
Winston-Salem, NC 27106 | USA
Main +1 336 668 9999
Fax +1 336 668 0888
cushmanwakefield.com

Wells Fargo Tower

100 N. Main Street, Suite 2102 / Winston-Salem, NC 27101

