

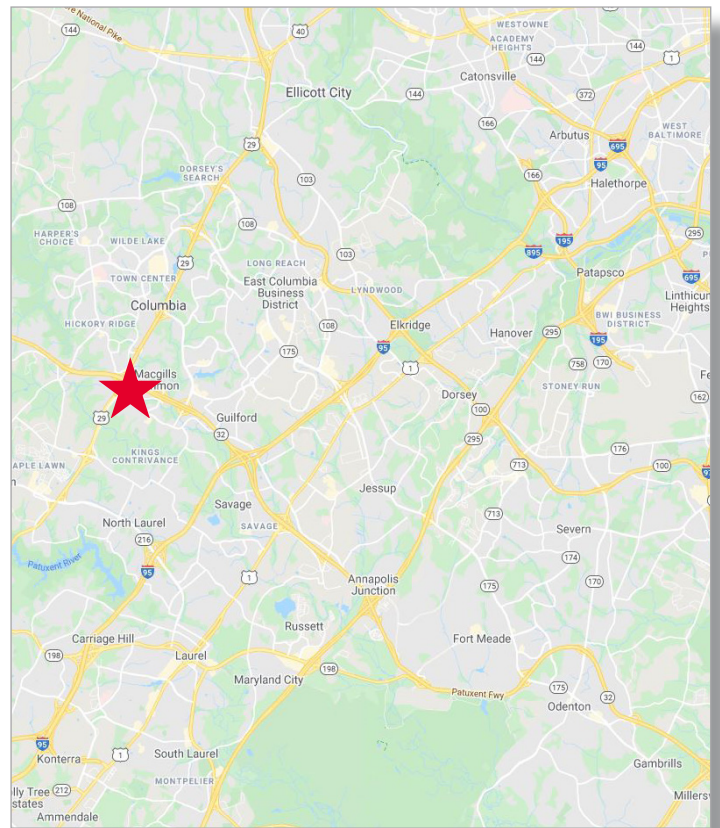


FOR LEASE
Rivers Center
8300-8335 Guilford Road / Columbia, MD



Features

- Five-building, single-story office and office/flex product
- Short drive from numerous and neighboring retail including Kings Contrivance Center, Snowden Square Shopping Center, Columbia Town Center, and Maple Lawn
- Well capitalized ownership providing professional and responsive “in-house” property management services
- Centrally located between major employment centers of Ft. Meade (NSA, DISA, US Cyber Command, etc.), JHU APL, Downtown Columbia, and BWI Airport.
- Direct full service interchange access to MD Route 32 linking Rivers Center to Washington, DC and Baltimore by I-95, I-295, and US 29.



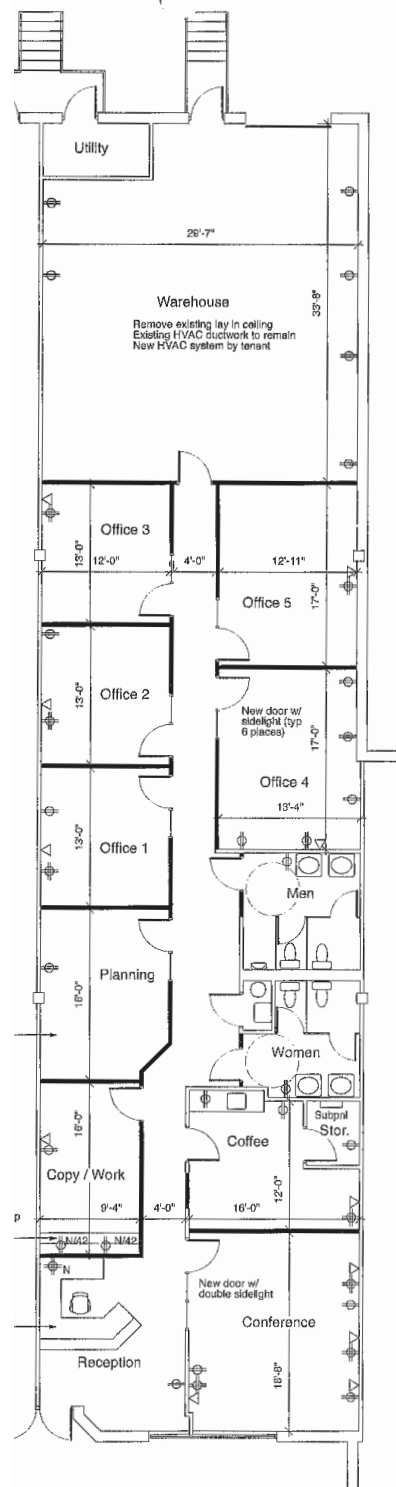
Scott N. Matthews, Jr.
Senior Director
+1 410 953 6697
scott.matthews@cushwake.com

Andrew J. Smith, CCIM
Senior Director
+1 410 953 6691
andrew.j.smith@cushwake.com



FOR LEASE
Rivers Center
8300-8335 Guilford Road / Columbia, MD

8310 Guilford Road
3,827 RSF - Suite D
Office/Flex



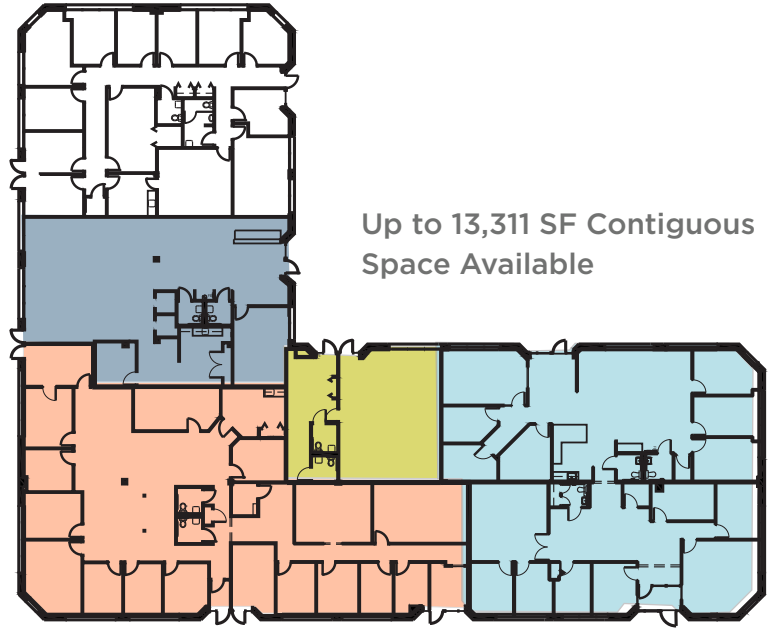
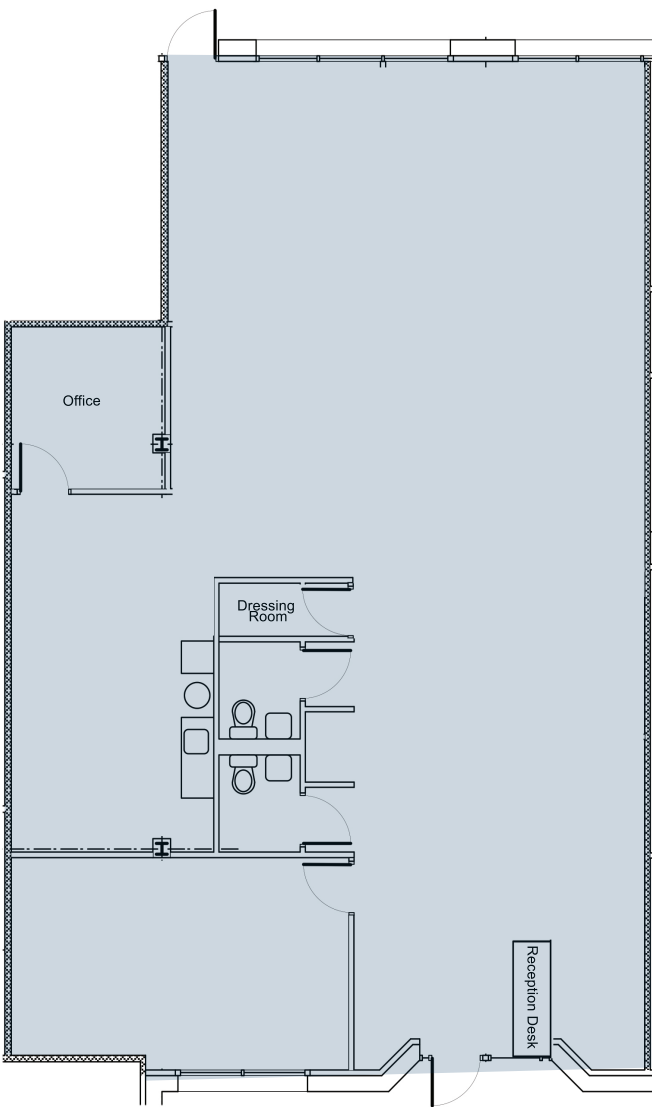
Scott N. Matthews, Jr.
Senior Director
+1 410 953 6697
scott.matthews@cushwake.com

Andrew J. Smith, CCIM
Senior Director
+1 410 953 6691
andrew.j.smith@cushwake.com



FOR LEASE
Rivers Center
8300-8335 Guilford Road / Columbia, MD

8335 Guilford Road
2,392 RSF - Suite H
100% Office Space



Up to 13,311 SF Contiguous
Space Available

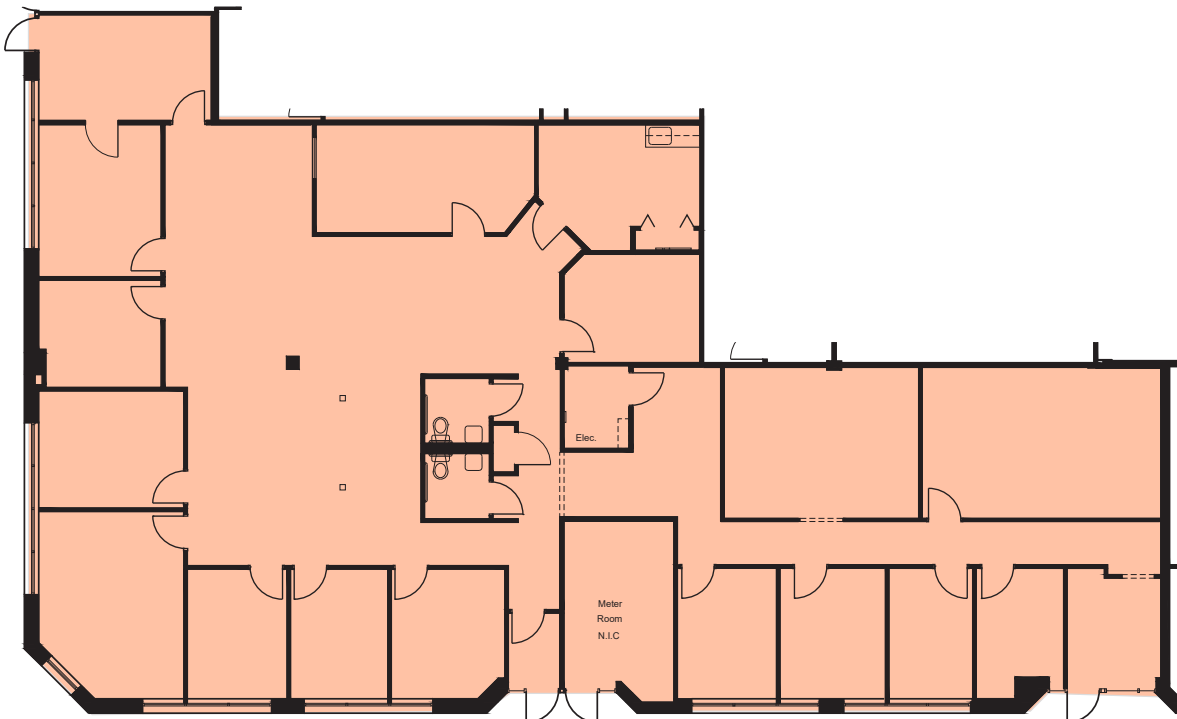
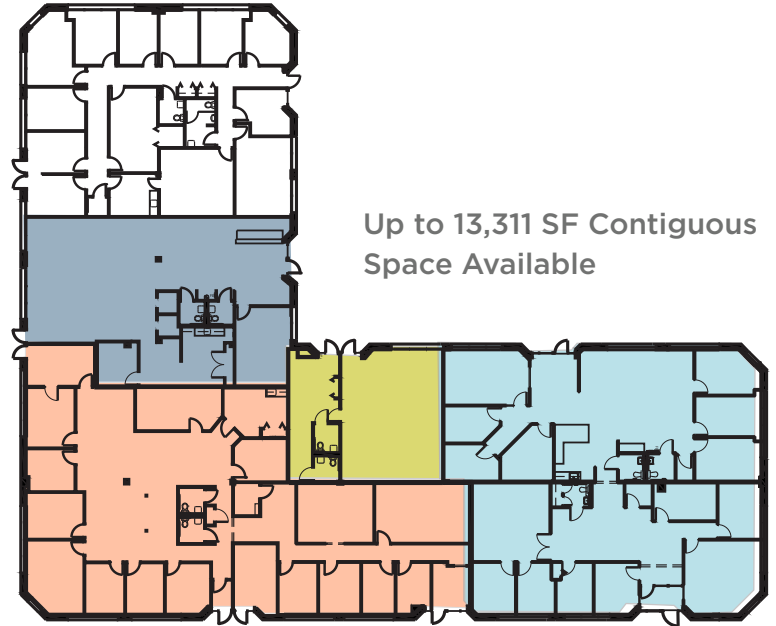
Scott N. Matthews, Jr.
Senior Director
+1 410 953 6697
scott.matthews@cushwake.com

Andrew J. Smith, CCIM
Senior Director
+1 410 953 6691
andrew.j.smith@cushwake.com



FOR LEASE
Rivers Center
8300-8335 Guilford Road / Columbia, MD

8335 Guilford Road
4,907 RSF - Suite A
100% Office Space



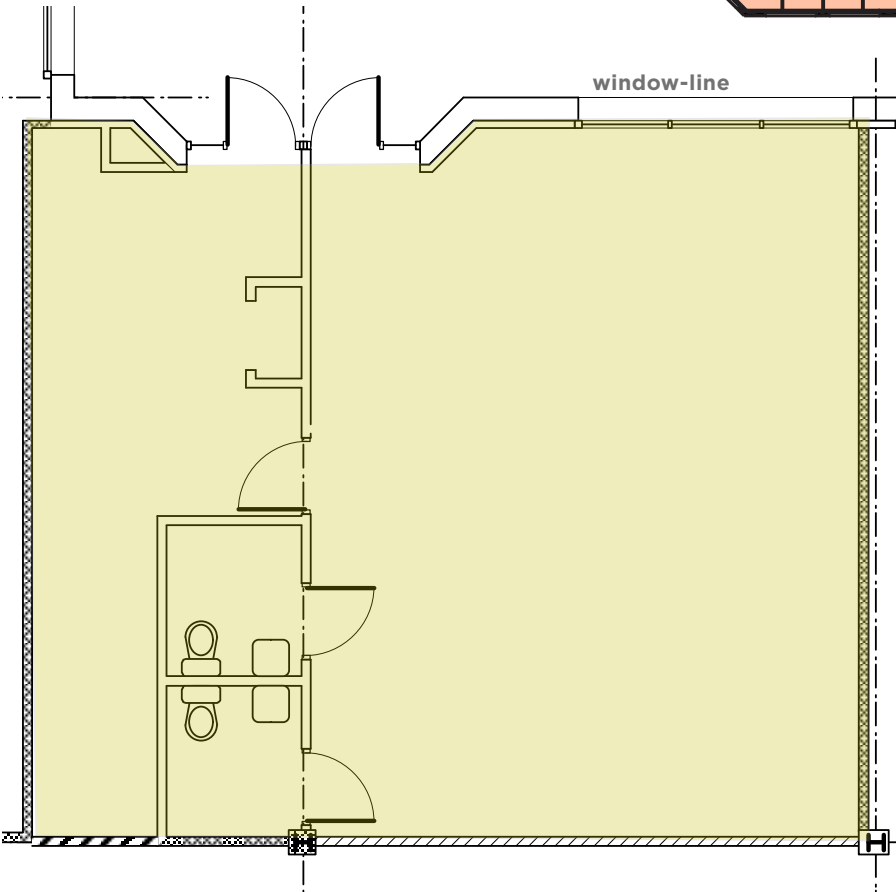
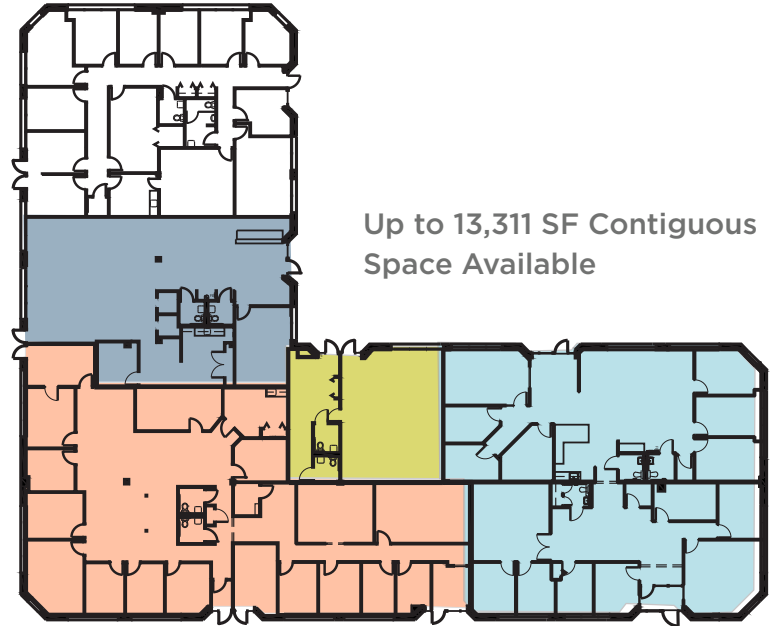
Scott N. Matthews, Jr.
Senior Director
+1 410 953 6697
scott.matthews@cushwake.com

Andrew J. Smith, CCIM
Senior Director
+1 410 953 6691
andrew.j.smith@cushwake.com



FOR LEASE
Rivers Center
8300-8335 Guilford Road / Columbia, MD

8335 Guilford Road
1,253 RSF - Suite G
100% Office Space

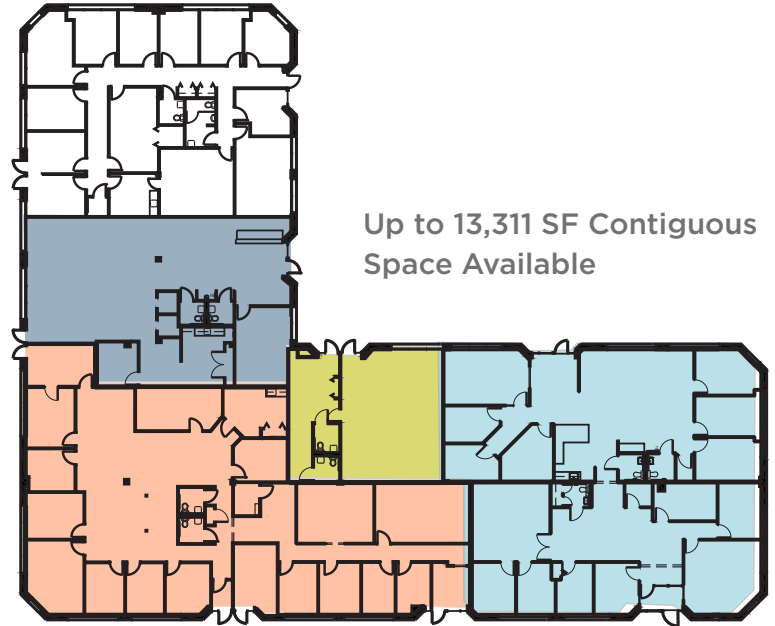


Scott N. Matthews, Jr.
Senior Director
+1 410 953 6697
scott.matthews@cushwake.com

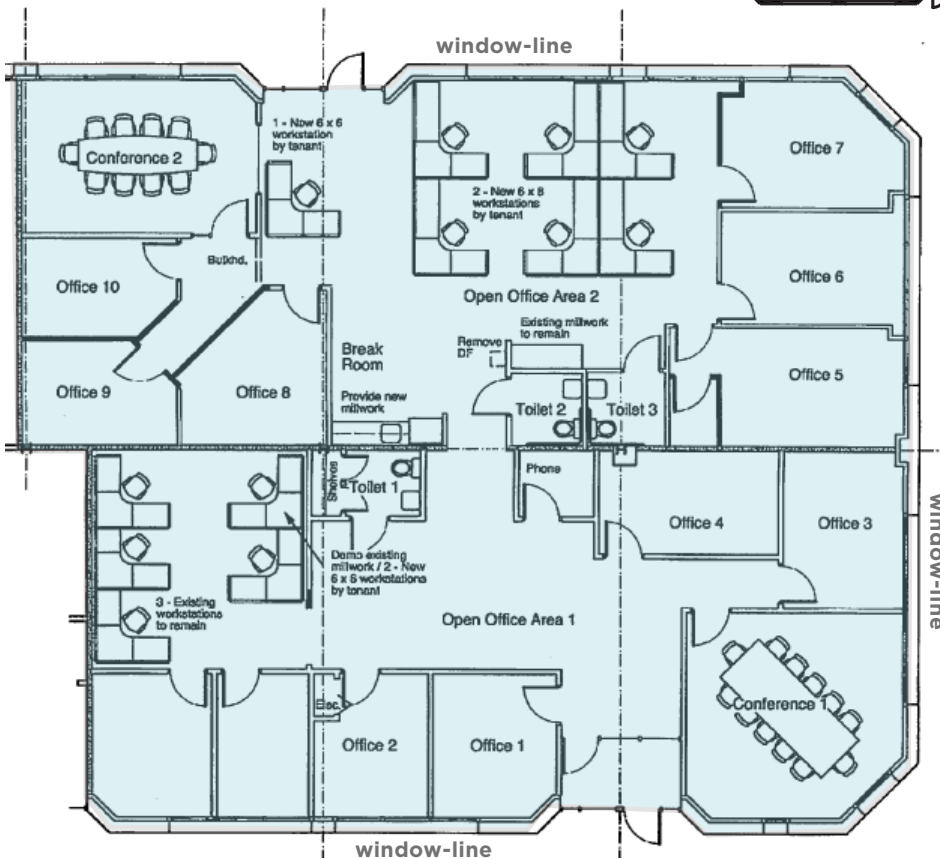
Andrew J. Smith, CCIM
Senior Director
+1 410 953 6691
andrew.j.smith@cushwake.com

8335 Guilford Road
4,759 RSF - Suite C
100% Office Space

Newly available end cap office unit with tremendous glass-line and potential for exterior signage fronting Guilford Rd. Call for details.



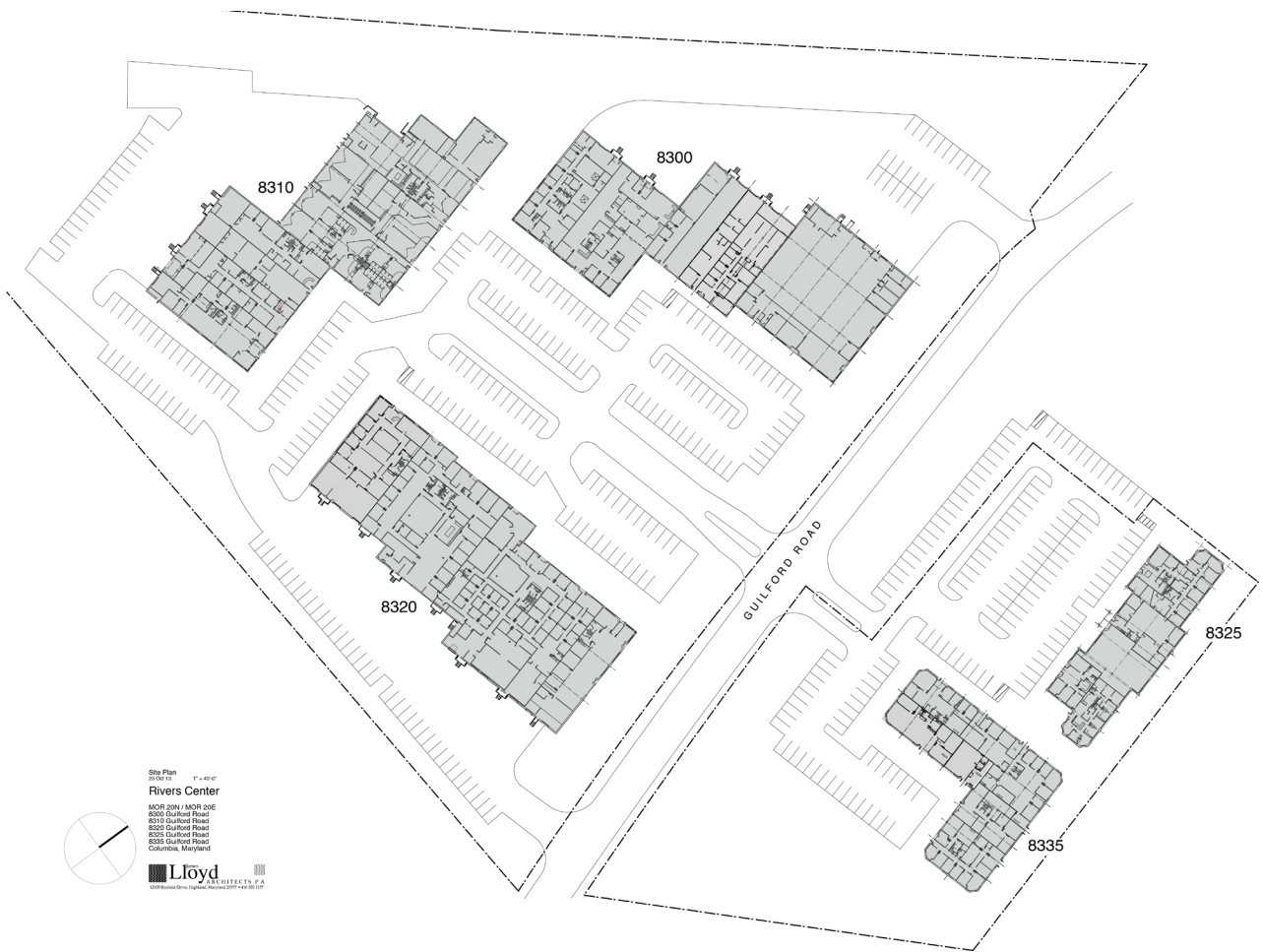
Up to 13,311 SF Contiguous Space Available



Scott N. Matthews, Jr.
 Senior Director
 +1 410 953 6697
 scott.matthews@cushwake.com


Andrew J. Smith, CCIM
 Senior Director
 +1 410 953 6691
 andrew.j.smith@cushwake.com

Site Plan



Site Plan
 2/16/13 1"=40'-0"

Rivers Center
 8300-8335 Guilford Road
 8310 Guilford Road
 8320 Guilford Road
 8325 Guilford Road
 8335 Guilford Road
 Columbia, Maryland



Lloyd
 ARCHITECTS, P.A.
 1000 Riverside Drive, Highland, Maryland 21074-4230 (T)

www.riverscenter.com



Scott N. Matthews, Jr.
 Senior Director
 +1 410 953 6697
scott.matthews@cushwake.com

Andrew J. Smith, CCIM
 Senior Director
 +1 410 953 6691
andrew.j.smith@cushwake.com