

FOR SUBLEASE

# CITYCENTRE FIVE

825 Town & Country Blvd, Houston, TX 77024

11,878 RSF



## SPACE DETAILS

### Premises

11,878 RSF; 14th Floor

### Term

Through 9/30/26

### "Net" Rate

Below Market

### OPEX

\$19.17/RSF

### Parking

4/1,000 RSF

Houston's premiere walkable mixed-use development

•••••

400,000 SF of upscale shopping + dining

•••••

140,000 SF Life Time Athletic Fitness Facility

•••••

266-room flagship hotel

•••••

LEED Silver Certification in 2016

•••••

Dedicated office parking spaces

## BUILDING NOTES



**CUSHMAN &  
WAKEFIELD**

[cushmanwakefield.com](http://cushmanwakefield.com)

# CITYCENTRE FIVE

825 Town & Country Blvd, Houston, TX 77024

11,878 RSF

FOR SUBLEASE

## PROPERTY PHOTOS



## SPACE NOTES

Half of floor w/ elevator lobby entrance

••••

10 private offices

••••

Large cubicles w/ sufficient  
"social distancing" space

••••

Large break room w/ TVs  
& vending machine

••••

Private men & women's bathrooms

••••

Large IT/Storage room



**CUSHMAN &  
WAKEFIELD**

[cushmanwakefield.com](http://cushmanwakefield.com)

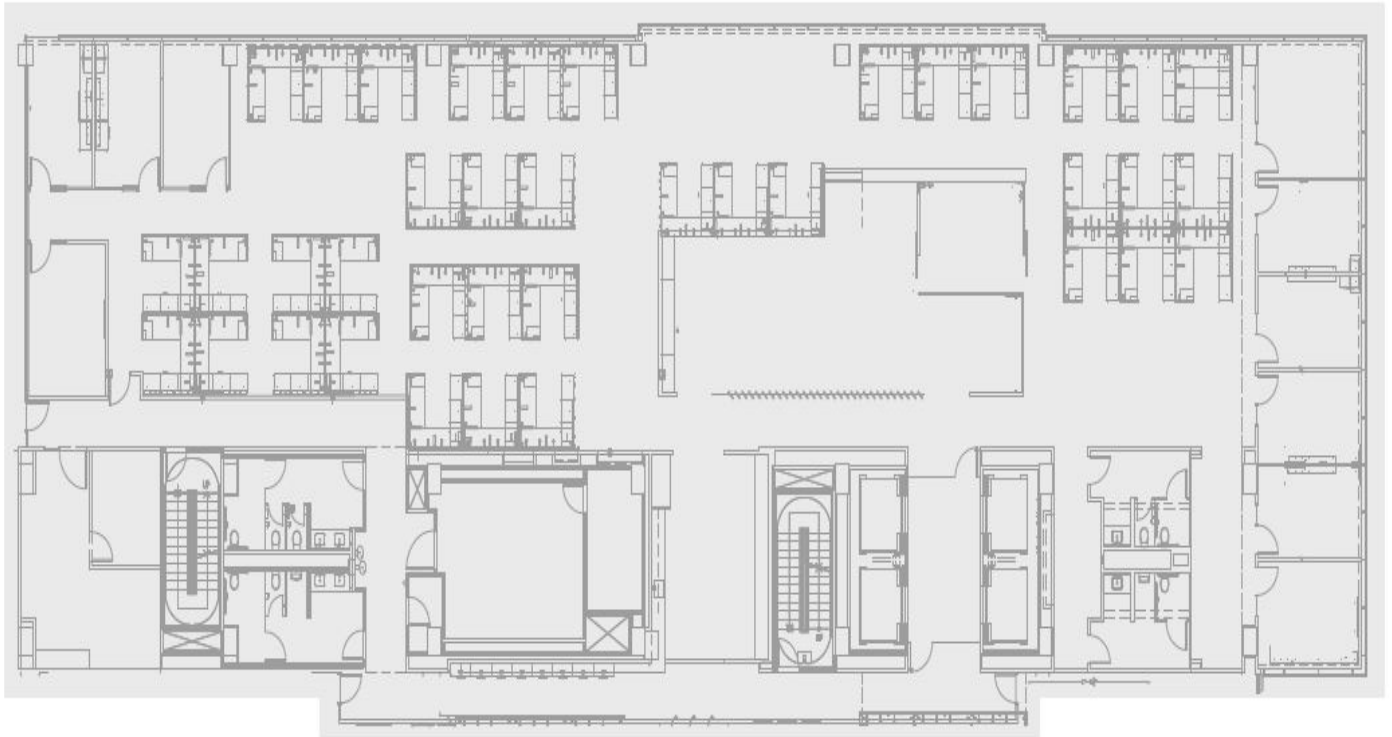
# CITYCENTRE FIVE

825 Town & Country Blvd, Houston, TX 77024

11,878 RSF

FOR SUBLEASE

## FLOOR PLAN



### JOE RAMBIN

Director  
+1 713 963 2820  
joe.rambin@cushwake.com

### DAVID G. GUION

Executive Managing Director  
+1 713 963 2810  
david.guion@cushwake.com

1330 Post Oak Blvd, Suite 2700  
Houston, Texas  
Main +1 713 877 1700  
cushmanwakefield.com



**CUSHMAN &  
WAKEFIELD**

cushmanwakefield.com