

FOR SUBLEASE

CITYCENTRE FIVE

825 Town & Country Blvd, Houston, TX 77024

11,878 RSF



SPACE DETAILS

Premises

11,878 RSF; 14th Floor

Term

Through 9/30/26

"Net" Rate

Below Market

OPEX

\$19.17/RSF

Parking

4/1,000 RSF

Houston's premiere walkable
mixed-use development

•••••

400,000 SF of upscale shopping + dining

•••••

140,000 SF Life Time Athletic
Fitness Facility

•••••

266-room flagship hotel

•••••

LEED Silver Certification in 2016

•••••

Dedicated office parking spaces

BUILDING NOTES



**CUSHMAN &
WAKEFIELD**

cushmanwakefield.com

CITYCENTRE FIVE

825 Town & Country Blvd, Houston, TX 77024

11,878 RSF

FOR SUBLEASE

PROPERTY PHOTOS



SPACE NOTES

Half of floor w/ elevator lobby entrance

••••

10 private offices

••••

Large cubicles w/ sufficient
“social distancing” space

••••

Large break room w/ TVs
& vending machine

••••

Private men & women’s bathrooms

••••

Large IT/Storage room



**CUSHMAN &
WAKEFIELD**

cushmanwakefield.com

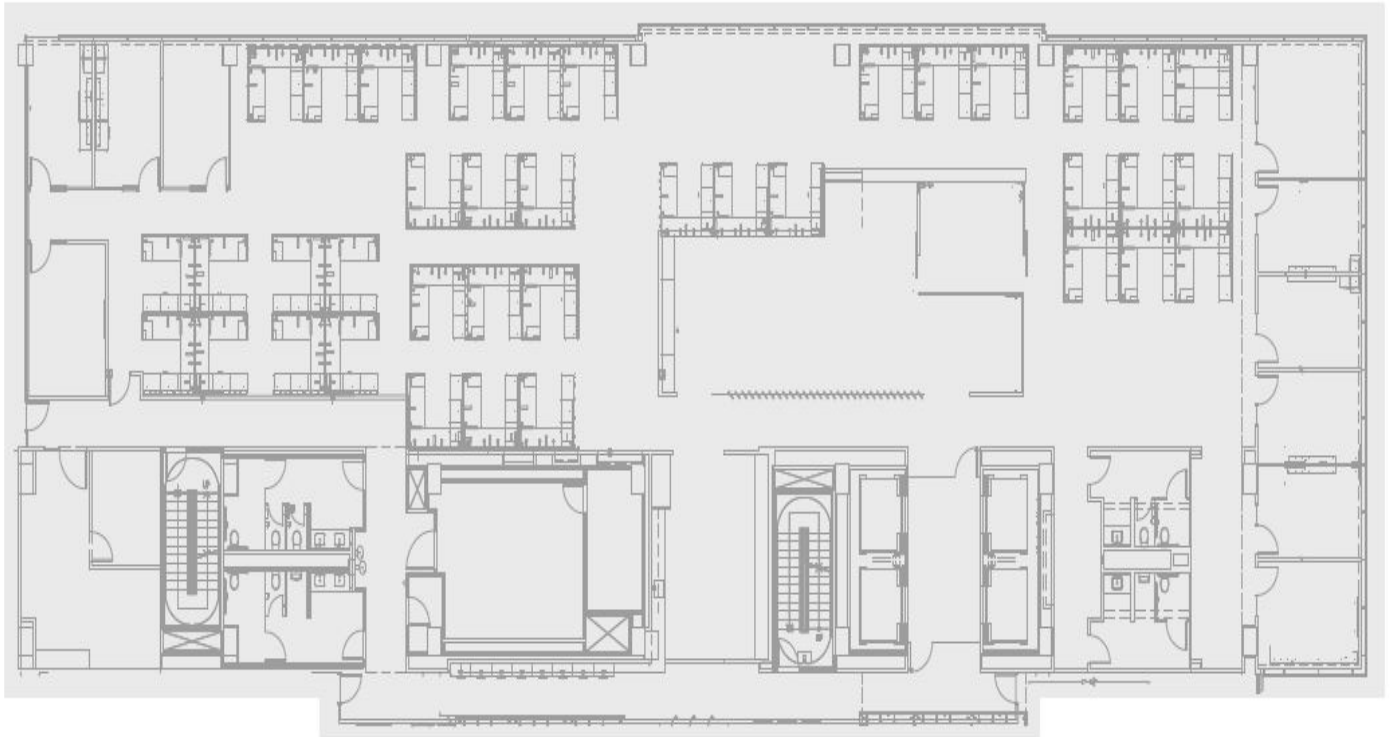
CITYCENTRE FIVE

825 Town & Country Blvd, Houston, TX 77024

11,878 RSF

FOR SUBLEASE

FLOOR PLAN



JOE RAMBIN

Director
+1 713 963 2820
joe.rambin@cushwake.com

DAVID G. GUION

Executive Managing Director
+1 713 963 2810
david.guion@cushwake.com

1330 Post Oak Blvd, Suite 2700
Houston, Texas
Main +1 713 877 1700
cushmanwakefield.com



**CUSHMAN &
WAKEFIELD**

cushmanwakefield.com