

FOR LEASE

1600 Park 370 Boulevard
Suite 3&4, Hazelwood, MO

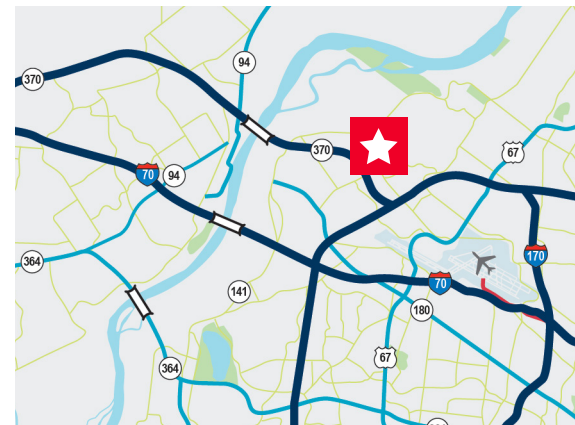


22,800 SF

Class A Office/ Warehouse

PROPERTY HIGHLIGHTS

- Available SF 22,800 SF
- Office SF 2,173 SF
- Clear Height 28'
- Dock Loading 5 (9' x 10') docks with pit levelers and seals
1 (12' x 14') drive-in door
- Column Spacing 40' x 40'
- Speed Bay 60' x 40'
- Building Depth 220'
- Building Type Tilt-up panel (2001)
- Fire Suppression ESFR
- **Asking Rate \$6.95/SF NNN**



Contact

MATT EASTIN, SIOR, CCIM
Executive Director
+1 314 746 0350
matt.eastin@cushwake.com

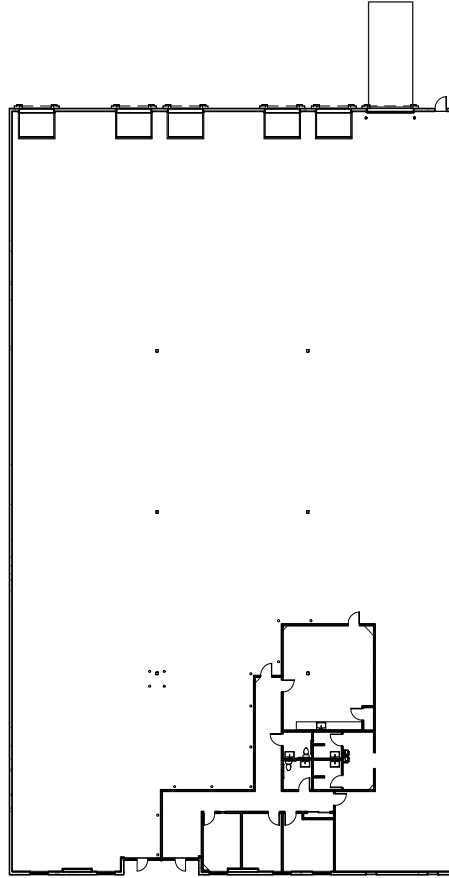
CHRISTY WIRTH, SIOR, CCIM
Director
+1 314 813 9524
christy.wirth@cushwake.com

FOR LEASE

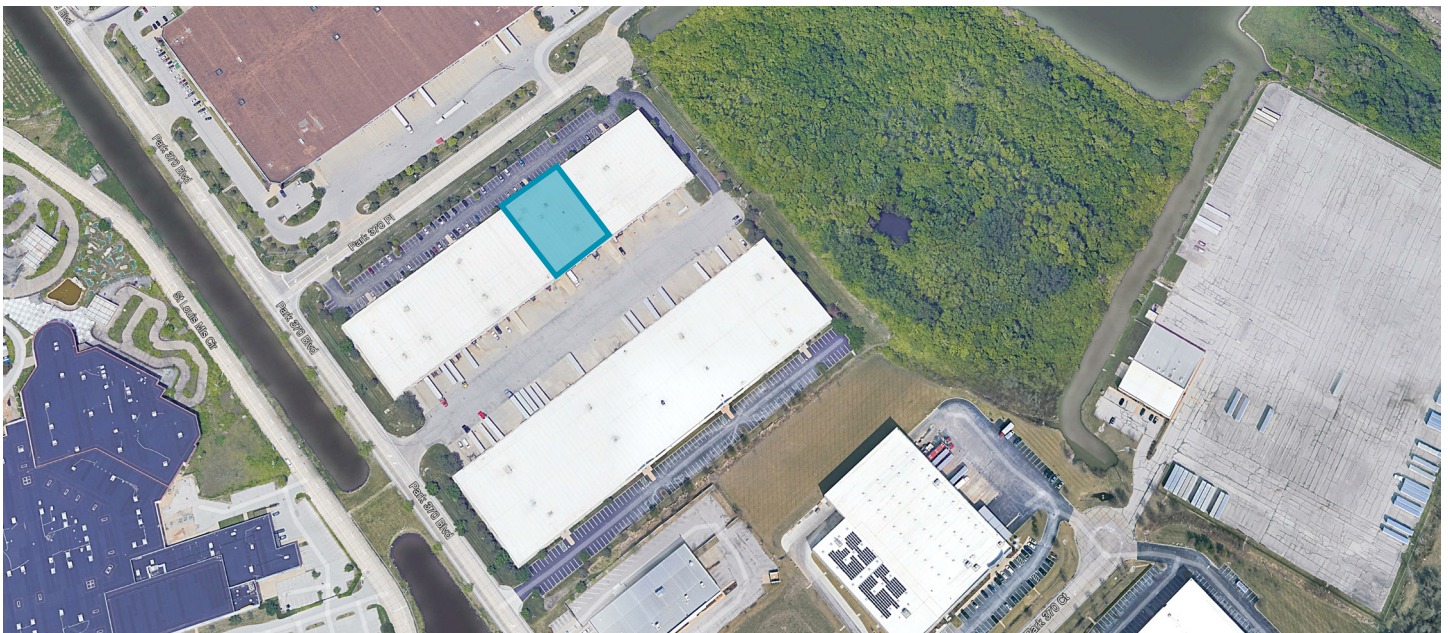
1600 Park 370 Boulevard
Suite 3&4, Hazelwood, MO



Floor Plan



Aerial



©2024 Cushman & Wakefield. All rights reserved. The information contained in this communication is strictly confidential. This information has been obtained from sources believed to be reliable but has not been verified. No warranty or representation, express or implied, is made as to the condition of the property (or properties) referenced herein or as to the accuracy or completeness of the information contained herein, and same is submitted subject to errors, omissions, change of price, rental or other conditions, withdrawal without notice, and to any special listing conditions imposed by the property owner(s). Any projections, opinions or estimates are subject to uncertainty and do not signify current or future property performance.