



FOR LEASE

# Sunset Corporate Center

10733 Sunset Office Drive  
St. Louis, Missouri 63127



## 3,896 RSF Available

### Property Highlights

- Over \$2,000,000 in Renovations
  - Building Lobby, Cafe and Lounge - September 2022
- Easy Access to Highway 44 and Lindbergh Blvd
- Covered Executive Parking Available
- 4.5/1,000 SF Parking Ratio
- **Asking Rate: \$24.00/SF; Full Service**



**Andrew Bagy**  
Director  
+1 314 925 2969  
andy.bagy@cushwake.com

7700 Forsyth Blvd, Suite 1210  
St. Louis, MO 63105  
Main +1 314 862 7100  
**cushmanwakefield.com**

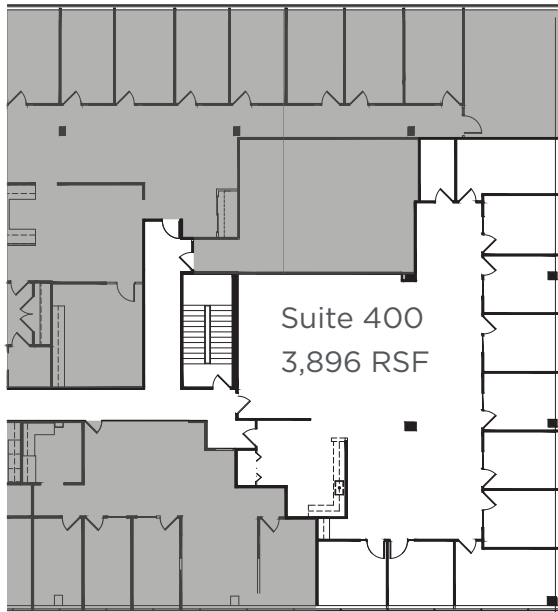
Cushman & Wakefield Copyright 2018. No warranty or representation, express or implied, is made to the accuracy or completeness of the information contained herein, and same is submitted subject to errors, omissions, change of price, rental or other conditions, withdrawal without notice, and to any special listing conditions imposed by the property owner(s). As applicable, we make no representation as to the condition of the property (or properties) in question.



# Sunset Corporate Center

10733 Sunset Office Drive  
St. Louis, Missouri 63127

## Floor Plan



## Suite Availability

Suite	RSF	Availability
400	3,896 RSF	Available



**Andrew Bagy**  
Director  
+1 314 925 2969  
andy.bagy@cushwake.com

7700 Forsyth Blvd, Suite 1210  
St. Louis, MO 63105  
Main +1 314 862 7100  
[cushmanwakefield.com](http://cushmanwakefield.com)