

FOR LEASE

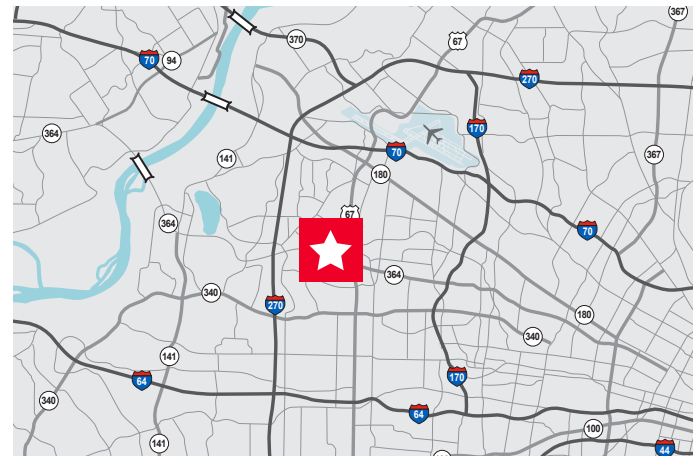
Lilburn Corporate Park

11610 Lilburn Park Road / St.Louis, MO



9,823 SF/FLEX WAREHOUSE AVAILABLE

- Total Building Area:** 49,195 SF
- Total Available Area:** ±9,823 SF
- Office %:** 60%
- Clear Height:** 17'
- Loading:** Two (2) Docks
- Sprinkler:** Wet System
- Parking:** 2.8/1,000 SF
- Location:** Centrally located and within minutes of I-270. Surrounded by hotels, restaurants, and other amenities.
- Lease Rate:** **\$9.25/SF NNN**



OWNED BY:

GLEN UNA

Investment & Management Co.

LEASED BY:

CUSHMAN & WAKEFIELD

Contact

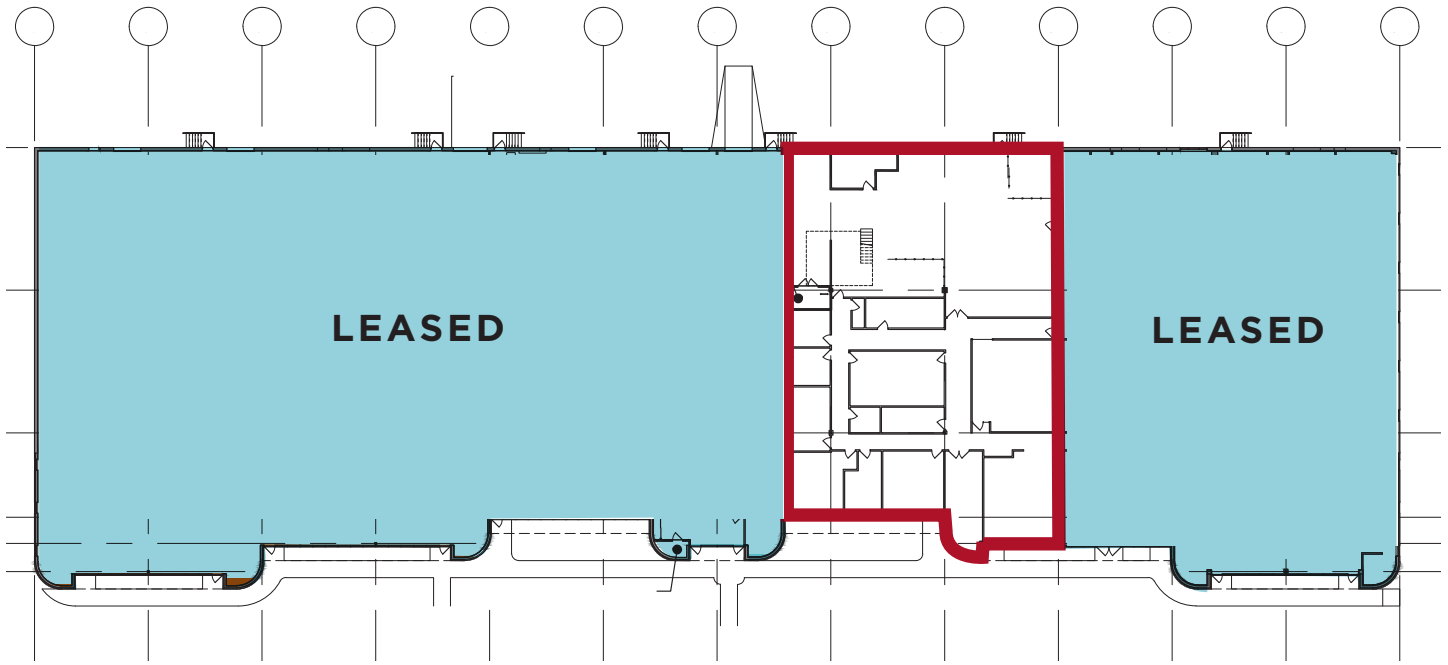
MATT EASTIN, SIOR, CCIM
+1 314 746 0350
matt.eastin@cushwake.com

CHRISTY WIRTH, SIOR, CCIM
+1 314 813 9524
christy.wirth@cushwake.com

FOR LEASE
Lilburn Corporate Park
11610 Lilburn Park Road / St.Louis, MO



FLOOR PLAN*



AERIAL



Contact

MATT EASTIN, SIOR, CCIM
+1 314 746 0350
matt.eastin@cushwake.com

CHRISTY WIRTH, SIOR, CCIM
+1 314 813 9524
christy.wirth@cushwake.com

©2023 Cushman & Wakefield. All rights reserved. The information contained in this communication is strictly confidential. This information has been obtained from sources believed to be reliable but has not been verified. No warranty or representation, express or implied, is made as to the condition of the property (or properties) referenced herein or as to the accuracy or completeness of the information contained herein, and same is submitted subject to errors, omissions, change of price, rental or other conditions, withdrawal without notice, and to any special listing conditions imposed by the property owner(s). Any projections, opinions or estimates are subject to uncertainty and do not signify current or future property performance.