



**CUSHMAN &
WAKEFIELD**

SMILE BRANDS



SUBLEASE OPPORTUNITY

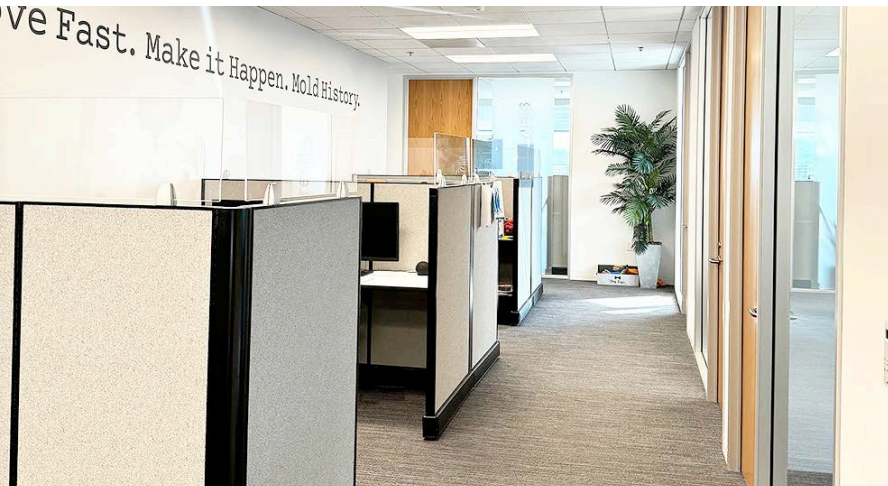
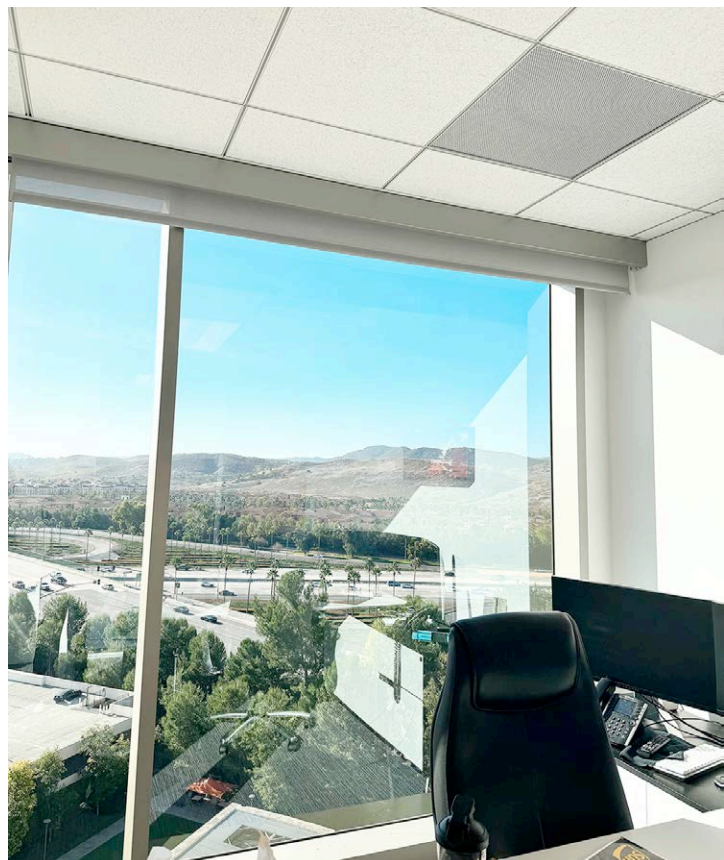
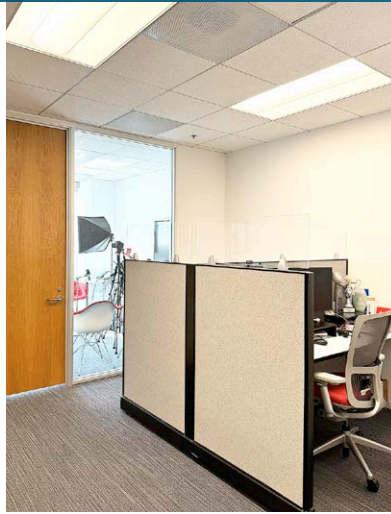
SUITE 1020 - 2,692 RSF

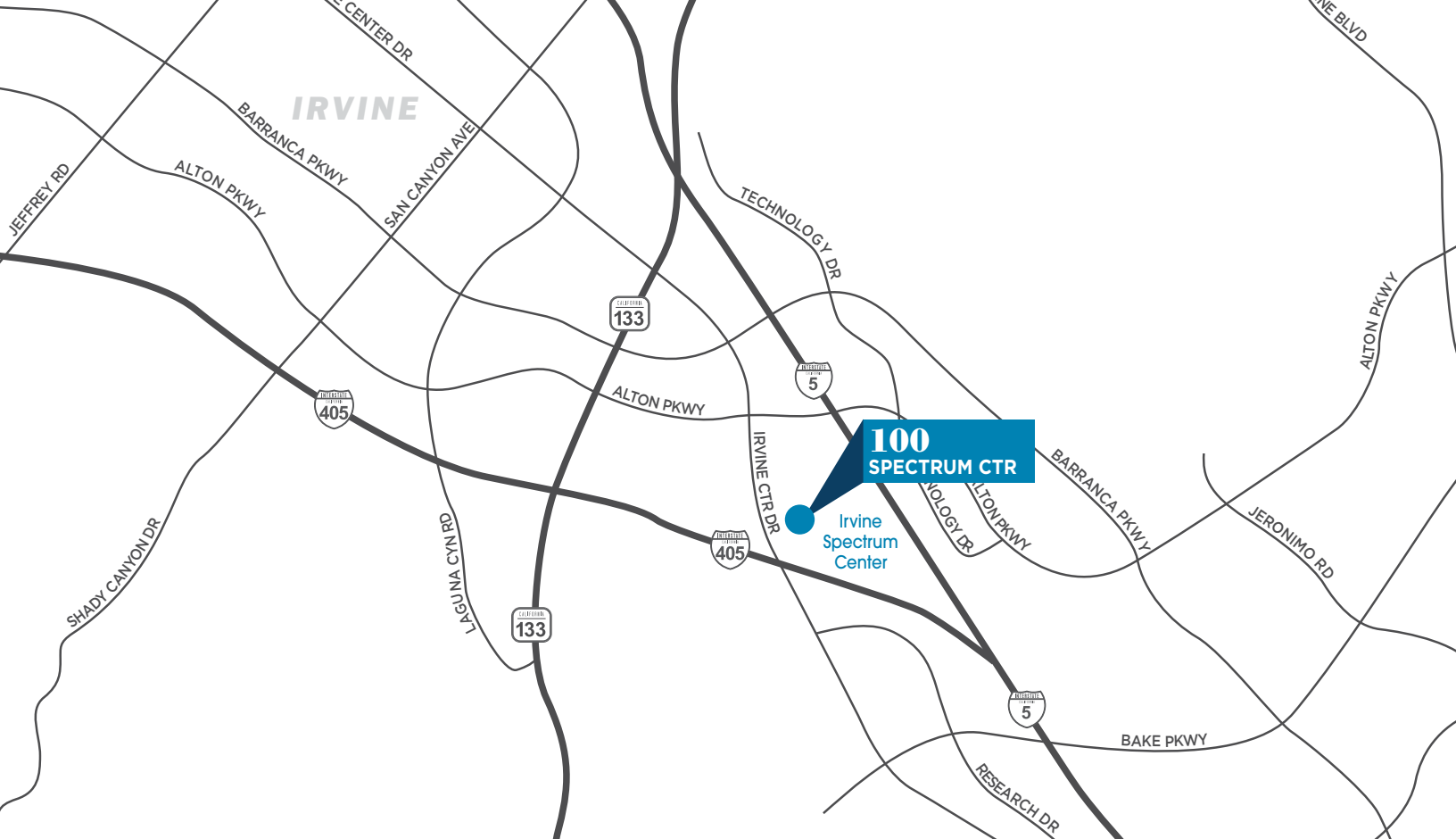
100

**SPECTRUM CENTER DR
IRVINE, CALIFORNIA 92618**

100 Spectrum Center Dr / Suite 1020

2,692 RSF AVAILABLE





100 Spectrum Center Dr / Suite 1020

2,692 RSF AVAILABLE

SUBLEASE HIGHLIGHTS

- Plug-and-play sublease opportunity
- Creative, high-end office space
- Furniture available
- Offering 6 private offices, large conference room, break room/kitchen and reception
- Abundant amenities within walking distance at Irvine Spectrum Center
- Immediate access to I-405 and I-5 Freeways
- Call to show

#1 Suite / Floor
SUITE 1020 / 10th

#2 Size
2,692 RSF

#3 Asking Rate
\$3.00 FSG

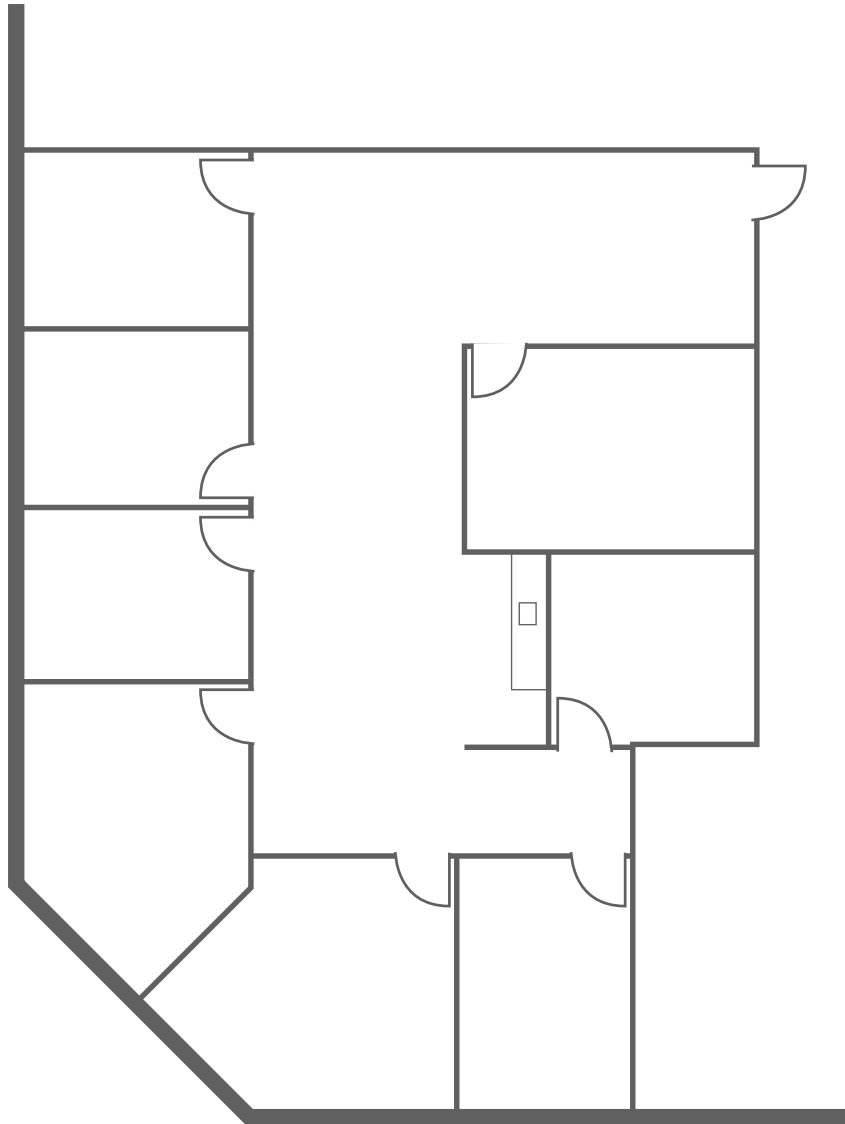
#4 Lease Through
01/31/2026

#5 Available
NOW

100 Spectrum Center Dr / Suite 1020

2,692 RSF AVAILABLE

FLOOR PLAN



Contact Information

LUKE NAPOLITANO - Lic. #02065599

Director
+1 949 930 2474
luke.napolitano@cushwake.com

JESSICA BAIRD - Lic. #02194051

Associate
+1 949 930 9241
jessica.baird@cushwake.com



CUSHMAN & WAKEFIELD | 18111 VON KARMAN AVENUE, SUITE 1000, IRVINE, CALIFORNIA 92612 | CUSHMANWAKEFIELD.COM | BRE LICENSE NO. 00616335

©2023 Cushman & Wakefield. All rights reserved. The information contained in this communication is strictly confidential. This information has been obtained from sources believed to be reliable but has not been verified. No warranty or representation, express or implied, is made as to the condition of the property (or properties) referenced herein or as to the accuracy or completeness of the information contained herein, and same is submitted subject to errors, omissions, change of price, rental or other conditions, withdrawal without notice, and to any special listing conditions imposed by the property owner(s). Any projections, opinions or estimates are subject to uncertainty and do not signify current or future property performance.