

# ±8,000 SF

## Industrial Space For Lease



## Prologis Las Vegas Corporate Center - Building 1

4031 N. Pecos Road, Suite 107  
North Las Vegas, NV 89030 USA



### LOCATION

- Convenient Freeway Access to I-15 via Craig Road
- Zoned Industrial: M-2 (North Las Vegas Jurisdiction)

### FACILITY

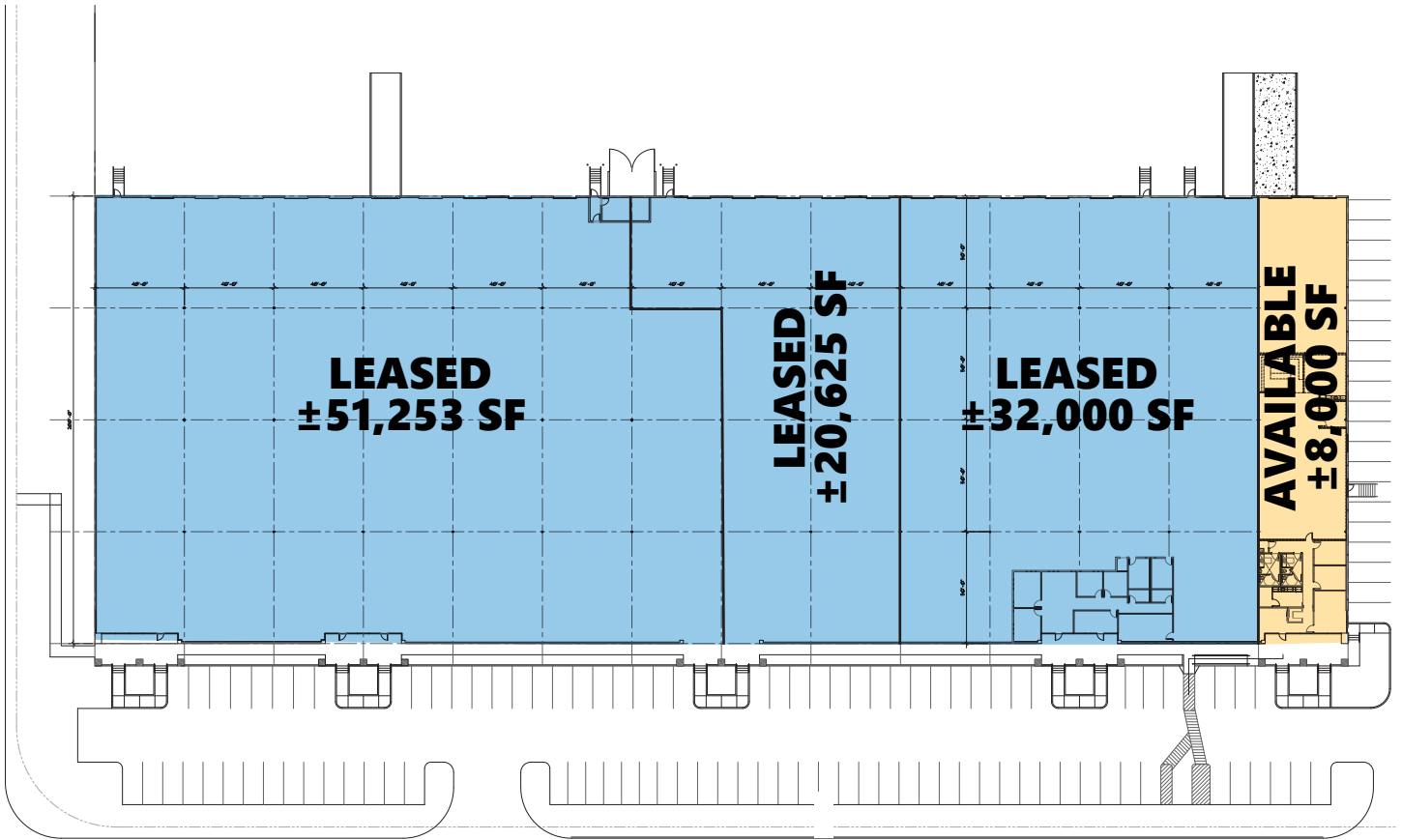
- Total Building Square Footage - ±111,878 SF
- Total Available Square Footage - ±8,000 SF
- ±5,180 SF Existing Office Space
- Two (2) Dock High Loading Doors
- ESFR Fire Sprinkler System
- ±24' Minimum Clear Height
- Rear Loaded
- 40' x 50' Typical Column Spacing
- 200 Amps, 277/480 Volts, 3-Phase Power, 4-Wire Electrical

### ADVANTAGES AND AMENITIES

- Near an abundance of restaurants, service amenities and industrial owner/users and manufacturing/distribution facilities.

# ±8,000 SF

## Industrial Space For Lease



**C&W - Donna Alderson, SIOR**  
Executive Managing Director  
donna.alderson@cushwake.com  
ph +1 702 605 1692  
Lic. S.0017096  
6725 Via Austi Parkway  
Suite 275  
Las Vegas, NV 89119 USA

**C&W - Greg Tassi, SIOR**  
Executive Managing Director  
greg.tassi@cushwake.com  
ph +1 702 605 1713  
Lic. S.0056472  
6725 Via Austi Parkway  
Suite 275  
Las Vegas, NV 89119 USA

**Prologis - Lisa Brady**  
VP - Market Officer  
lbrady@prologis.com  
ph +1 702 891 9141  
Lic. B.1002217  
3883 Howard Hughes Parkway  
Suite 850  
Las Vegas, NV 89169 USA

**Prologis - Renee Carroll**  
Senior Leasing Manager  
rcarroll@prologis.com  
ph +1 702 891 9503  
Lic. S.168458  
3883 Howard Hughes Parkway  
Suite 850  
Las Vegas, NV 89169 USA

No warranty or representation, expressed or implied, is made as to the accuracy of the information contained herein, and same is submitted subject to error and omissions.

[www.prologis.com](http://www.prologis.com)

[www.cushmanwakefield.com](http://www.cushmanwakefield.com)

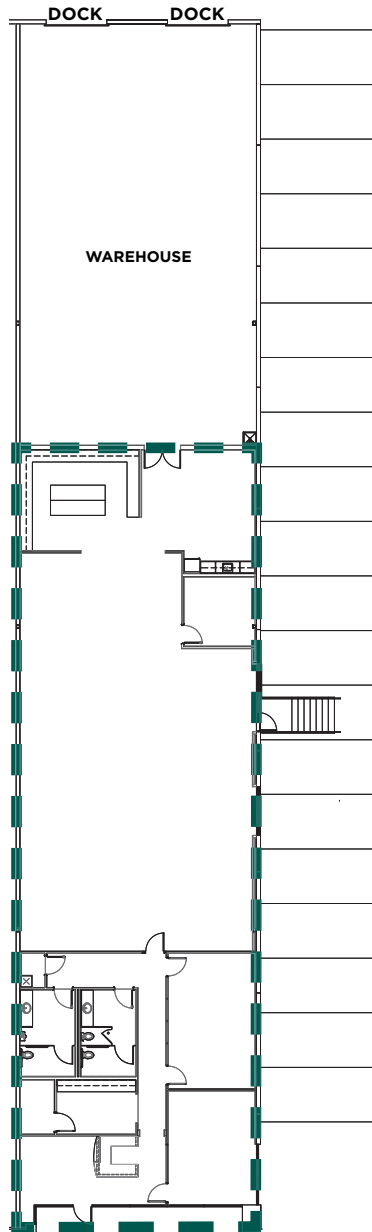
© 2021 Cushman & Wakefield U.S., Inc. All rights reserved. This information has been obtained from sources believed reliable, but has not been verified for accuracy or completeness. You should conduct a careful, independent investigation of the property and verify all information. Any reliance on this information is solely at your own risk. Cushman & Wakefield U.S., Inc. and the C&W logo are service marks of Cushman & Wakefield U.S., Inc. All other marks displayed on this document are the property of their respective owners. Photos herein are the property of their respective owners. Use of these images without the express written consent of the owner is prohibited.

# ±8,000 SF

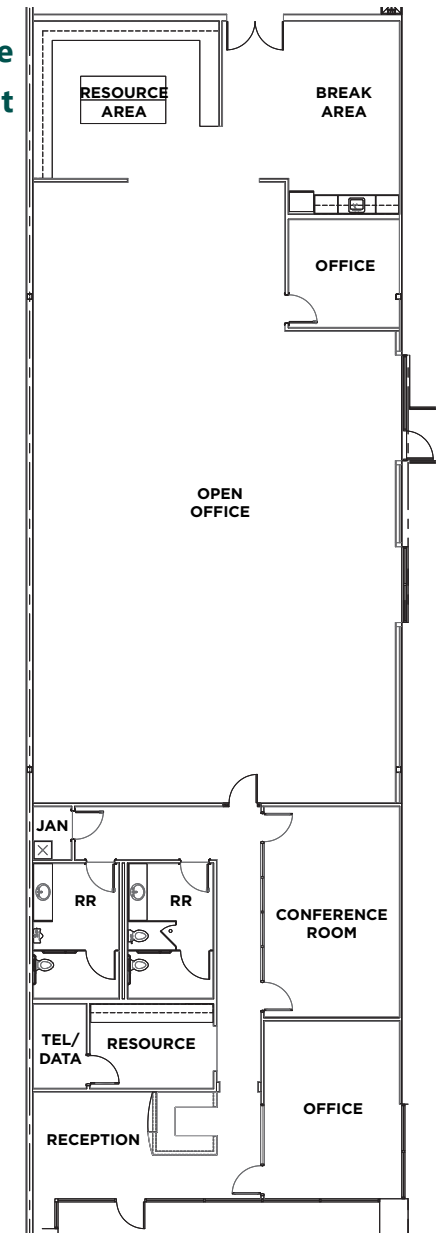
## Industrial Space For Lease



### Space Plan



### Existing Office Layout



**C&W - Donna Alderson, SIOR**  
Executive Managing Director  
donna.alderson@cushwake.com  
ph +1 702 605 1692  
Lic. S.0017096  
6725 Via Austi Parkway  
Suite 275  
Las Vegas, NV 89119 USA

**C&W - Greg Tassi, SIOR**  
Executive Managing Director  
greg.tassi@cushwake.com  
ph +1 702 605 1713  
Lic. S.0056472  
6725 Via Austi Parkway  
Suite 275  
Las Vegas, NV 89119 USA

**Prologis - Lisa Brady**  
VP - Market Officer  
lbrady@prologis.com  
ph +1 702 891 9141  
Lic. B.1002217  
3883 Howard Hughes Parkway  
Suite 850  
Las Vegas, NV 89169 USA

**Prologis - Renee Carroll**  
Senior Leasing Manager  
rcarroll@prologis.com  
ph +1 702 891 9503  
Lic. S.168458  
3883 Howard Hughes Parkway  
Suite 850  
Las Vegas, NV 89169 USA

No warranty or representation, expressed or implied, is made as to the accuracy of the information contained herein, and same is submitted subject to error and omissions.

[www.prologis.com](http://www.prologis.com)

[www.cushmanwakefield.com](http://www.cushmanwakefield.com)

© 2021 Cushman & Wakefield U.S., Inc. All rights reserved. This information has been obtained from sources believed reliable, but has not been verified for accuracy or completeness. You should conduct a careful, independent investigation of the property and verify all information. Any reliance on this information is solely at your own risk. Cushman & Wakefield U.S., Inc. and the C&W logo are service marks of Cushman & Wakefield U.S., Inc. All other marks displayed on this document are the property of their respective owners. Photos herein are the property of their respective owners. Use of these images without the express written consent of the owner is prohibited.