

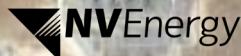


93

US 93 IS NOW A FOUR-LANE DIVIDED HIGHWAY

INTERSTATE 15

RECENTLY COMPLETED GARNETT INTERCHANGE



GRAND VALLEY PKWY

CHUCK LENZIE CT

SITE



FOR LEASE +53.95 ACRES

[Click Here to View Property Video](#)

APEX INDUSTRIAL PARK

NORTH LAS VEGAS, NV

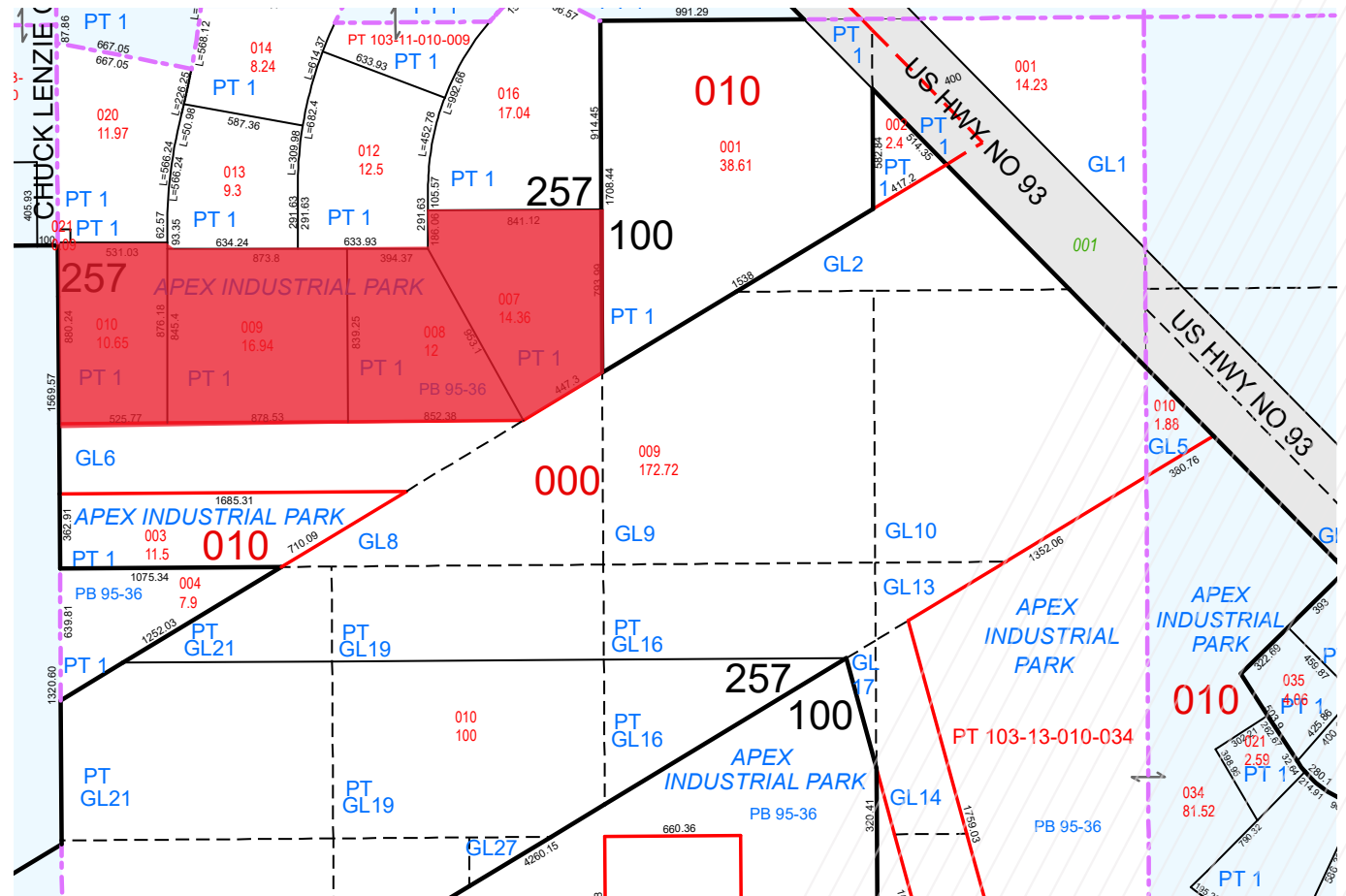


APEX INDUSTRIAL PARK

NORTH LAS VEGAS, NV

Property Highlights

- ±53.95 Acres Available For Lease
- APN's: 103-14-010-007, 008,009, 010
- Site Condition: Graded, Lighted, Fenced, and Powered (500 kVA)
- Potential Uses: Laydown Yard, Salvage Center, Warehousing Recycling Center, Building Materials Yard, Heavy Equipment Rental, Automobile Impounding Yard, Batch Plant Operation
- Planned Land Use: Industrial
- Zoning: M-2
- Jurisdiction: City of North Las Vegas
- Approximately 1.5 Miles to I-15 via US-93
- Call for Pricing



Corporate Neighbors





GREAT BASIN HWY.

CHUCK LENZIE CT.



FOR MORE INFORMATION, CONTACT:

Alma Cuevas
Director
+1 702 303 4412
Alma.Cuevas@cushwake.com
LIC #S.0180089.LLC

Jason Griffis
Director
+1 702 205 3861
Jason.Griffis@cushwake.com
LIC #S.0178374

Zac Zaher
Director
+1 702 466 4686
Zac.Zaher@cushwake.com
LIC #BS.0143683



©2020 Cushman & Wakefield. All rights reserved. The material in this presentation has been prepared solely for information purposes, and is strictly confidential. Any disclosure, use, copying or circulation of this presentation (or the information contained within it) is strictly prohibited, unless you have obtained Cushman & Wakefield's prior written consent. The views expressed in this presentation are the views of the author and do not necessarily reflect the views of Cushman & Wakefield. Neither this presentation nor any part of it shall form the basis of, or be relied upon in connection with any offer, or act as an inducement to enter into any contract or commitment whatsoever. NO REPRESENTATION OR WARRANTY IS GIVEN, EXPRESS OR IMPLIED, AS TO THE ACCURACY OF THE INFORMATION CONTAINED WITHIN THIS PRESENTATION, AND CUSHMAN & WAKEFIELD IS UNDER NO OBLIGATION TO SUBSEQUENTLY CORRECT IT IN THE EVENT OF ERRORS.