

1155 Perimeter Center

vmware

**BIG BLOCK AVAILABILTY
FOR SUBLEASE**

**20,132 RSF - 190,082 RSF
AVAILABLE**

Sydney Mayson
Director | Leasing Tenant Representation
+1 404.853.5210
sydney.mayson@cushwake.com

Ken Ashley, CCIM, SIOR, MCR
Executive Director | Leasing Tenant Representation
+1 404.853.5325
ken.ashley@cushwake.com

EXCLUSIVE LEASING AGENT

 **CUSHMAN &
WAKEFIELD**

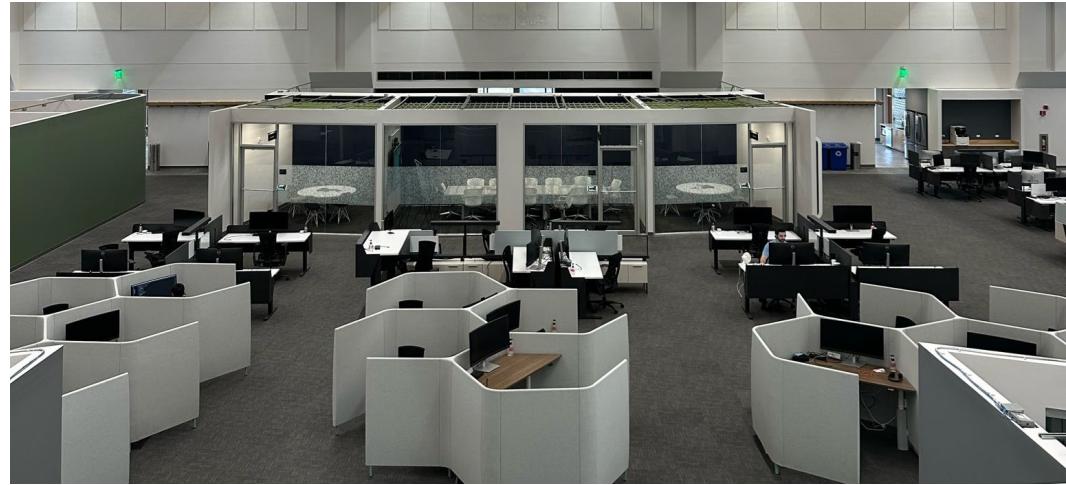
1155 Perimeter Center

- **FF&E | Available**
- **Rate | \$21.95/SF Full-Service Gross**
- **Term through 7/31/2027**
- Newly renovated building lobby and building outdoor amenities
- Full-Service Building Café
- Located within walking distance of the Sandy Springs MARTA station
- Fitness Center, including basketball court
- Free Parking (3.8/1,000 SF Parking Ratio)





**1155
Perimeter
Center**



AVAILABILITY OVERVIEW

FIRST FLOOR | 20,132 RSF OFFICE

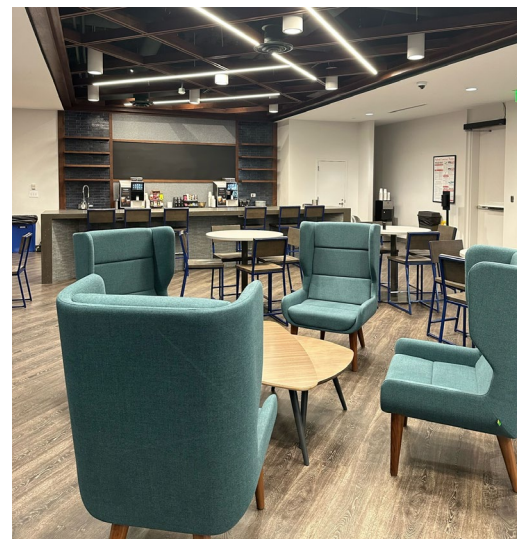
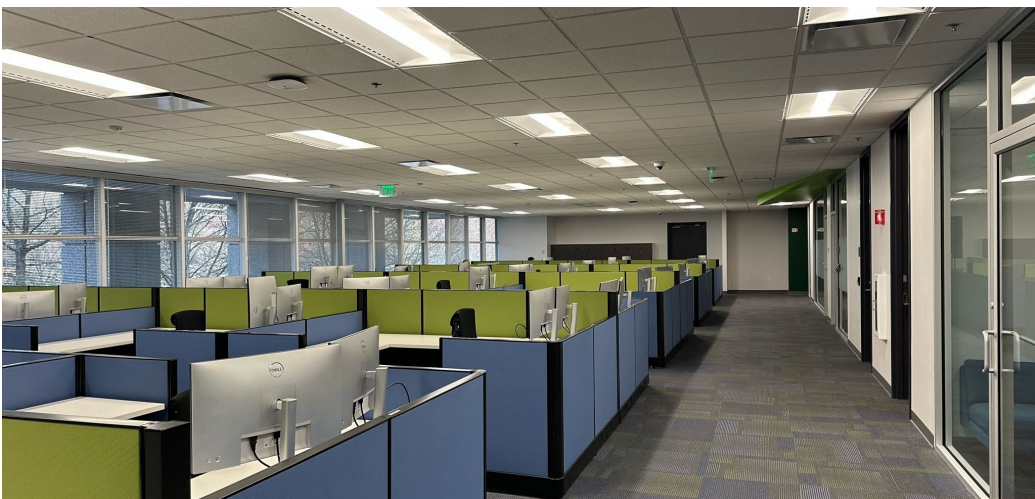
2ND FLOOR | 22,765 RSF OFFICE

CLICK EACH
FLOOR TO VIEW
FLOORPLANS

3RD FLOOR | 25,221 RSF OFFICE

4TH FLOOR | 25,221 RSF OFFICE

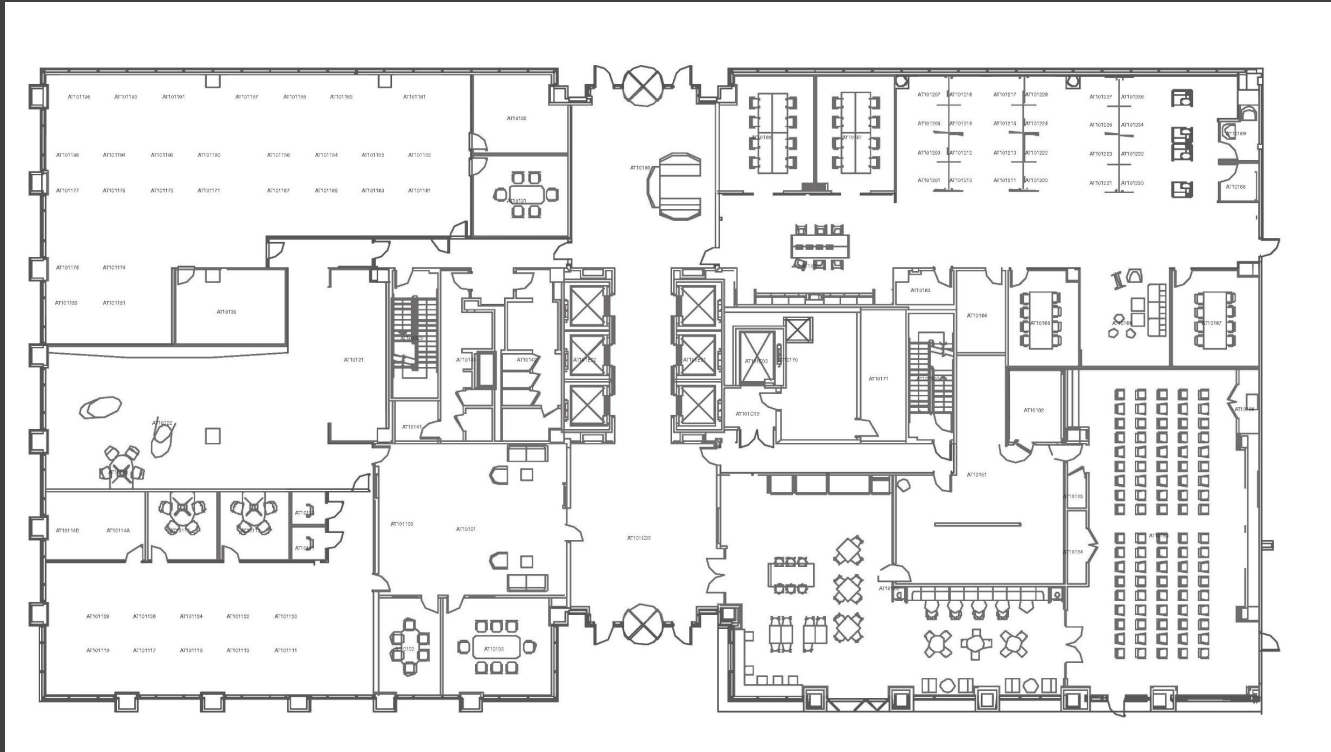
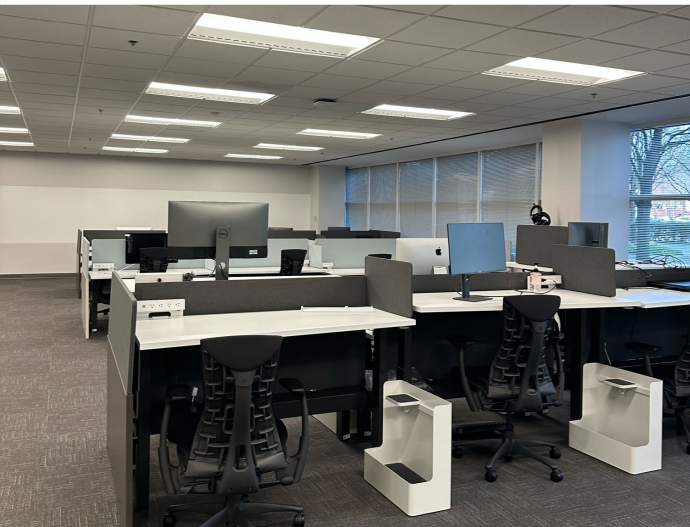
5TH FLOOR | 25,221 RSF OFFICE





1155 Perimeter Center

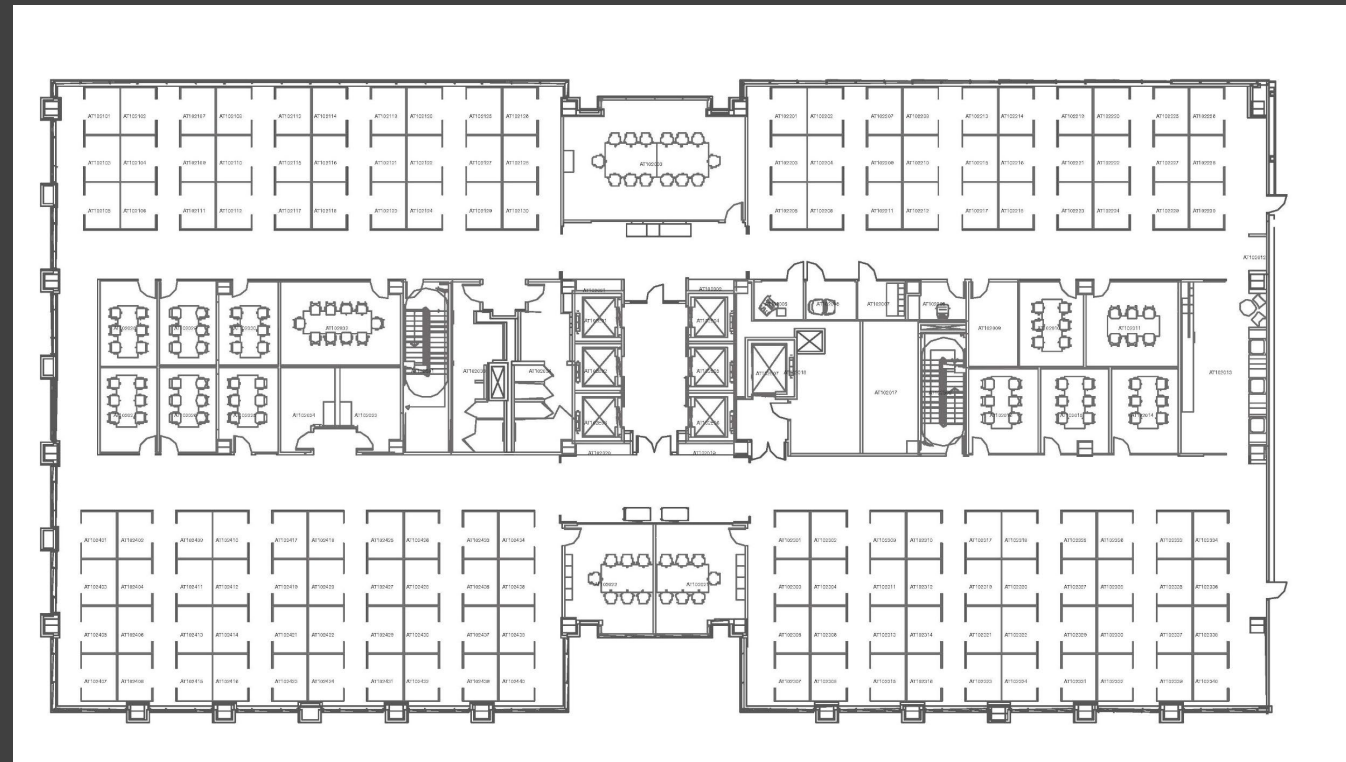
FIRST FLOOR | 20,132 RSF





1155 Perimeter Center

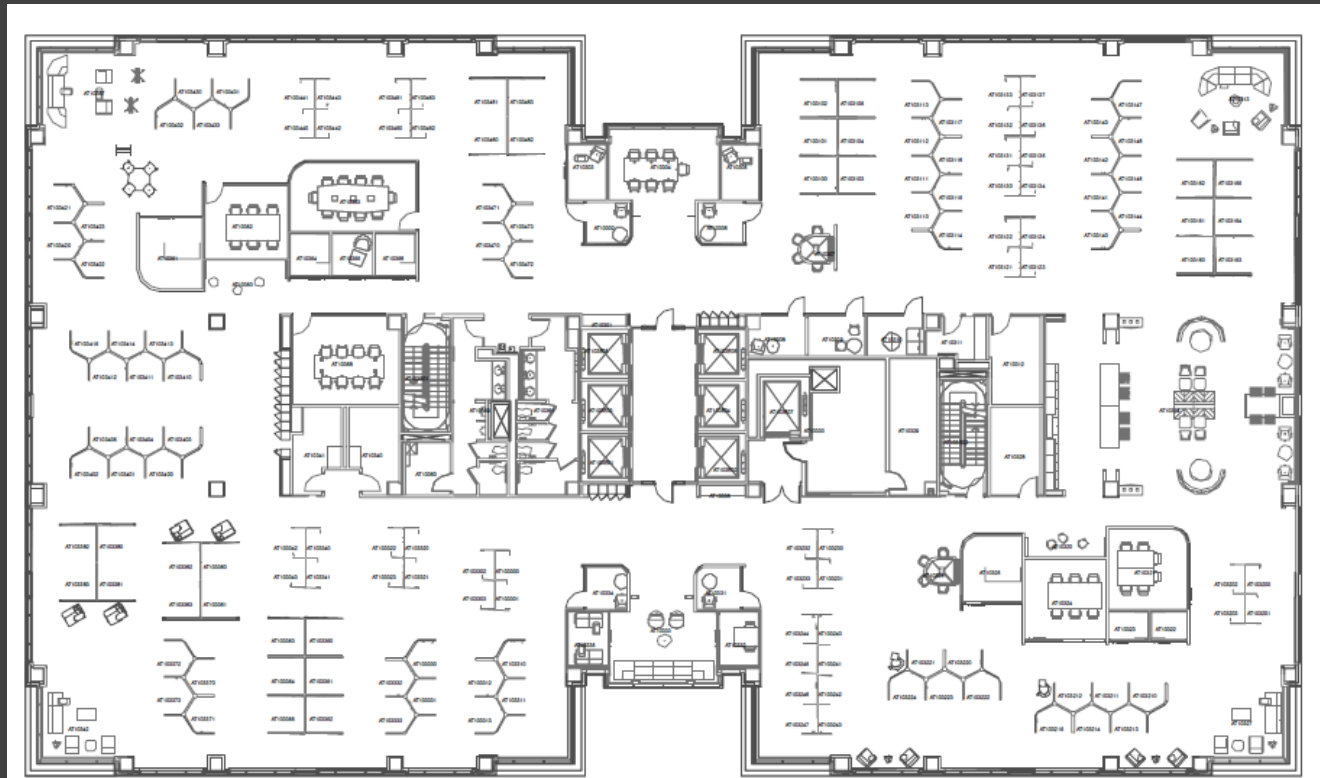
SECOND FLOOR | 22,765 RSF





1155 Perimeter Center

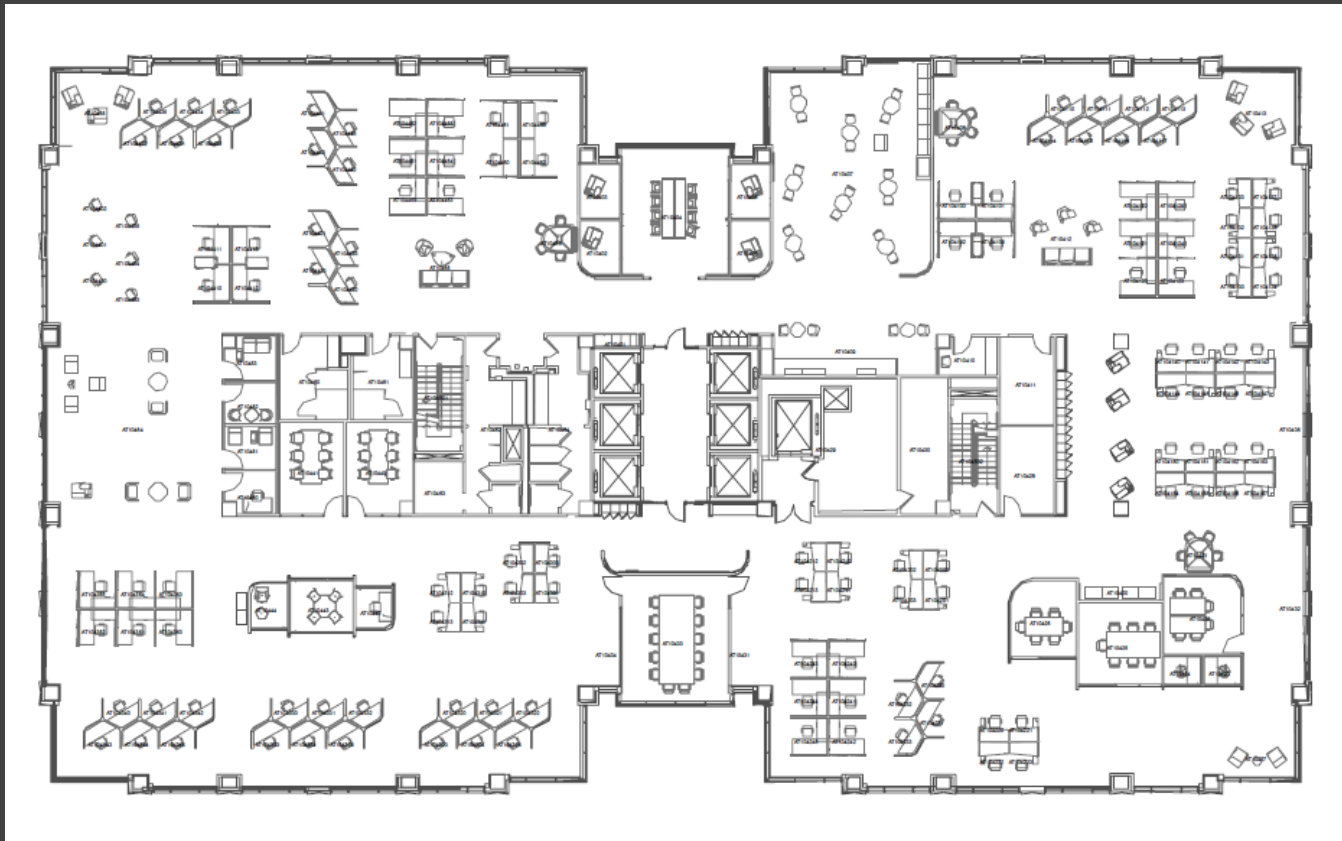
THIRD FLOOR | 25,221 RSF





1155 Perimeter Center

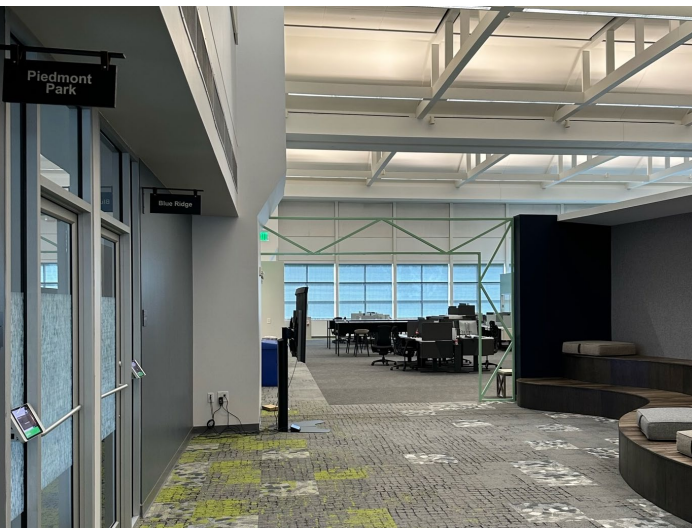
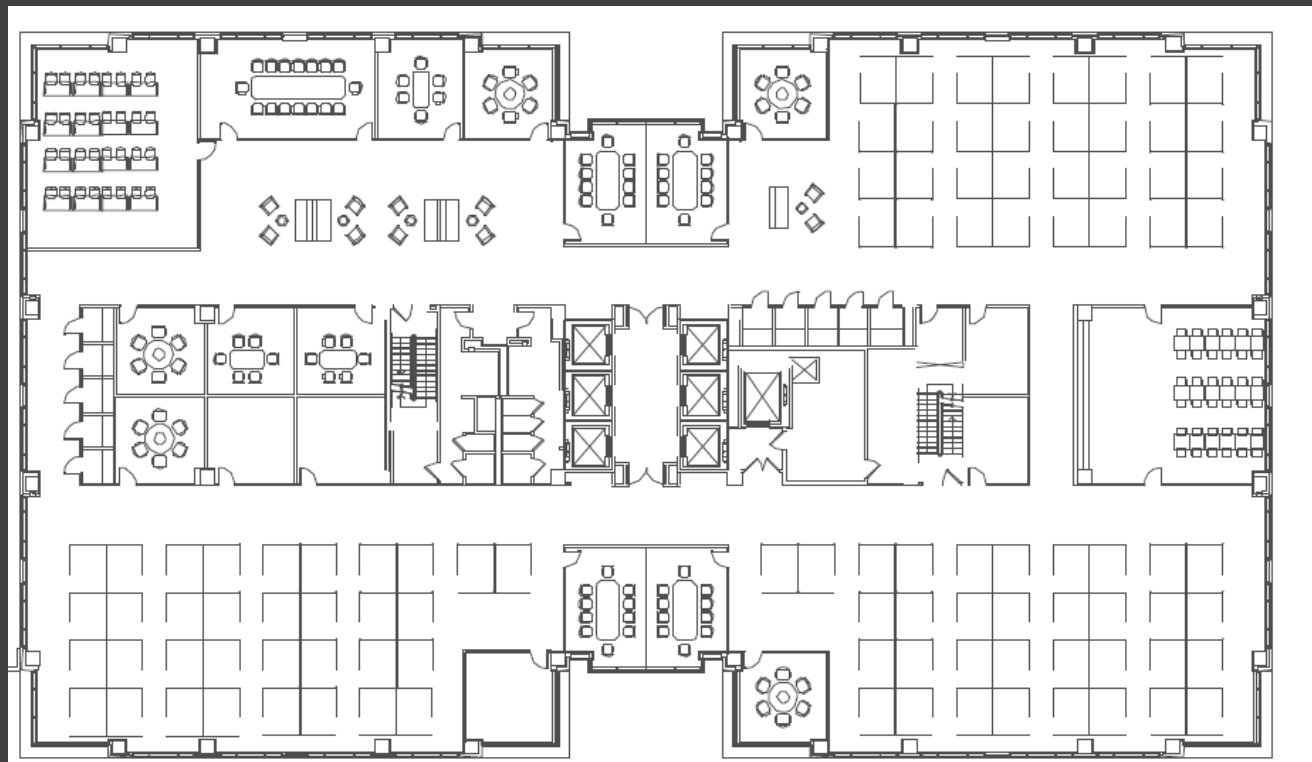
FOURTH FLOOR | 25,221 RSF





1155 Perimeter Center

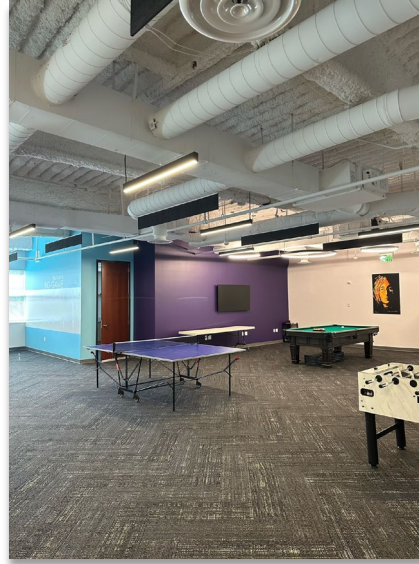
FIFTH FLOOR | 25,221 RSF



1155 Perimeter Center

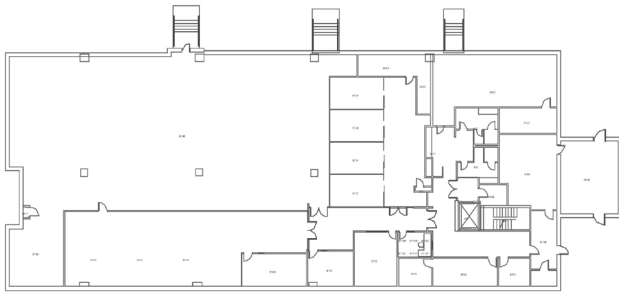
DATA CENTER | 15,835 RSF

GROUND FLOOR: TRADING CENTER
& MEZZANINE | 50,664 RSF

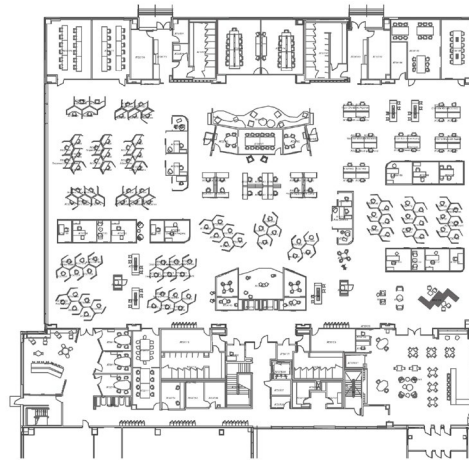


Trading Center

Data Center

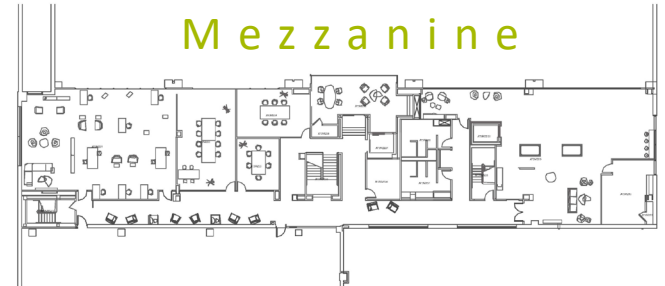


DATA CENTER | 15,835 RSF



GROUND FLOOR - TRADING CENTER & MEZZANINE | 50,664 RSF

Mezzanine



1155 Perimeter Center

OFFICE SPACE FOR SUBLEASE

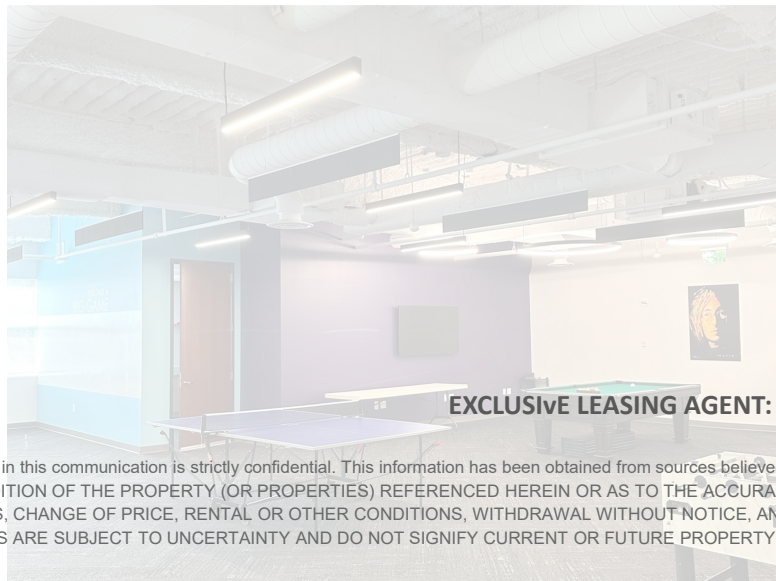
CUSHMANWAKEFIELD.COM

©2024 Cushman & Wakefield. All rights reserved. The information contained in this communication is strictly confidential. This information has been obtained from sources believed to be reliable but has not been verified. NO WARRANTY OR REPRESENTATION, EXPRESS OR IMPLIED, IS MADE AS TO THE CONDITION OF THE PROPERTY (OR PROPERTIES) REFERENCED HEREIN OR AS TO THE ACCURACY OR COMPLETENESS OF THE INFORMATION CONTAINED HEREIN, AND SAME IS SUBMITTED SUBJECT TO ERRORS, OMISSIONS, CHANGE OF PRICE, RENTAL OR OTHER CONDITIONS, WITHDRAWAL WITHOUT NOTICE, AND TO ANY SPECIAL LISTING CONDITIONS IMPOSED BY THE PROPERTY OWNER(S). ANY PROJECTIONS, OPINIONS OR ESTIMATES ARE SUBJECT TO UNCERTAINTY AND DO NOT SIGNIFY CURRENT OR FUTURE PROPERTY PERFORMANCE.



Sydney Mayson
Director | Leasing Tenant Representation
+1 404.853.5210
sydney.mayson@cushwake.com

Ken Ashley, CCIM, SIOR, MCR
Executive Director | Leasing Tenant Representation
+1 404.853.5325
ken.ashley@cushwake.com



EXCLUSIVE LEASING AGENT:

