

1155 Perimeter Center

vmware

**BIG BLOCK AVAILABILTY
FOR SUBLEASE**

**20,132 RSF - 190,082 RSF
AVAILABLE**

Sydney Mayson
Director | Leasing Tenant Representation
+1 404.853.5210
sydney.mayson@cushwake.com

Ken Ashley, CCIM, SIOR, MCR
Executive Director | Leasing Tenant Representation
+1 404.853.5325
ken.ashley@cushwake.com

EXCLUSIVE LEASING AGENT



**CUSHMAN &
WAKEFIELD**

1155 Perimeter Center

- **FF&E | Available**
- **Rate | \$21.95/SF Full-Service Gross**
- **Term through 7/31/2027**
- Newly renovated building lobby and building outdoor amenities
- Full-Service Building Café
- Located within walking distance of the Sandy Springs MARTA station
- Fitness Center, including basketball court
- Free Parking (3.8/1,000 SF Parking Ratio)





**1155
Perimeter
Center**



AVAILABILITY OVERVIEW

BELOW GRADE LEVEL | 20,858 RSF

FIRST FLOOR | 60,458 RSF

2ND FLOOR | 33,103 RSF

3RD FLOOR | 25,221 RSF

4TH FLOOR | 25,221 RSF

5TH FLOOR | 25,221 RSF



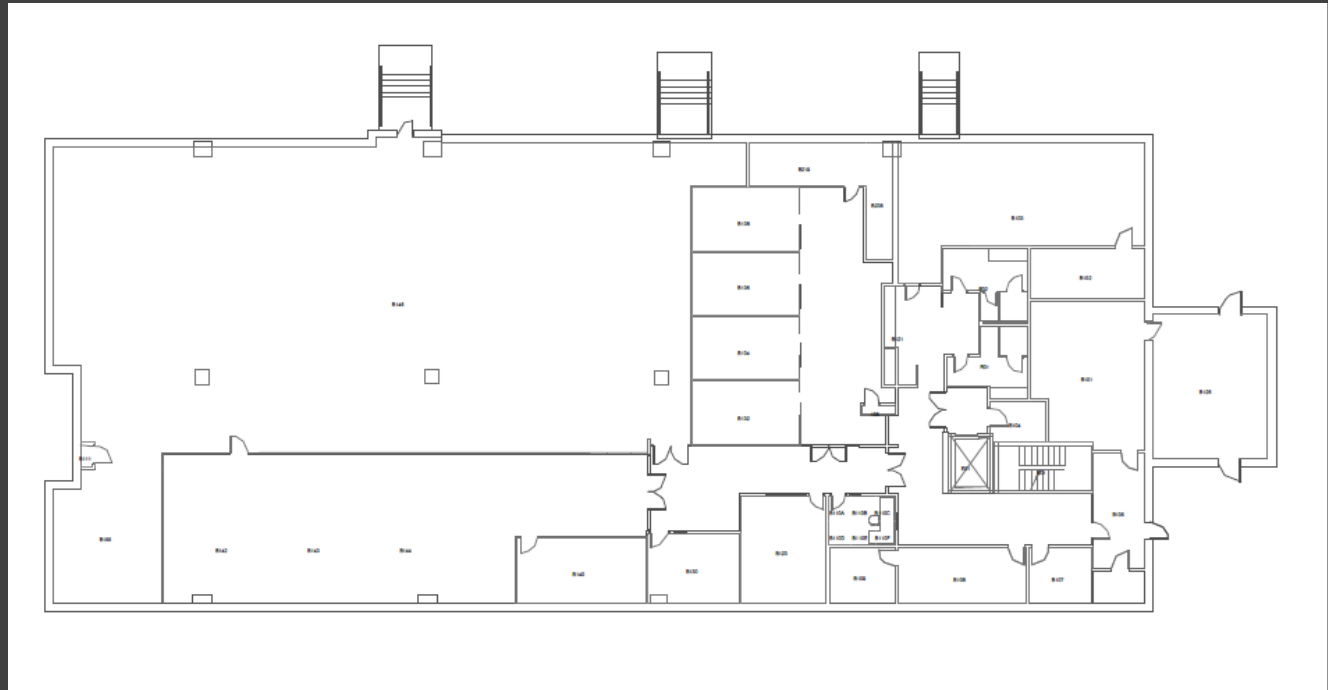
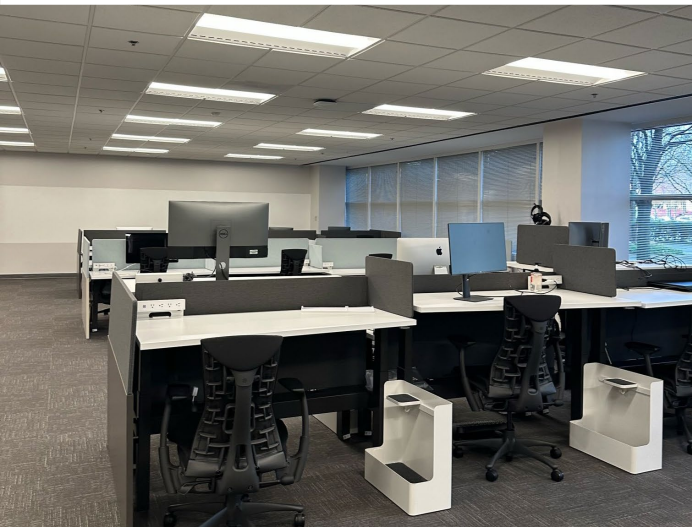
**CLICK EACH
FLOOR TO VIEW
FLOORPLANS**





1155 Perimeter Center

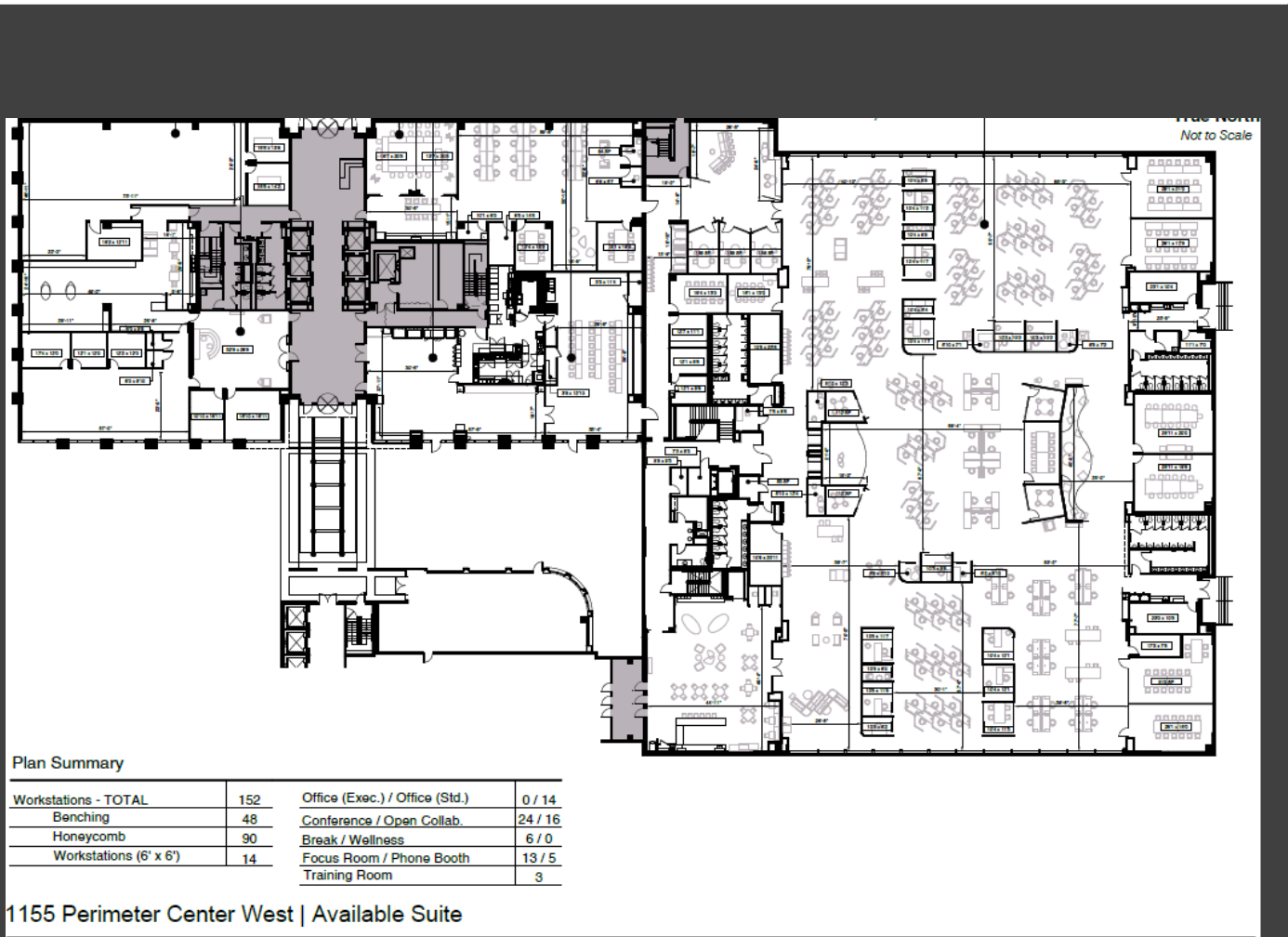
BELOW GRADE LEVEL | 20,858 RSF





1155 Perimeter Center

FIRST FLOOR | 60,458 RSF

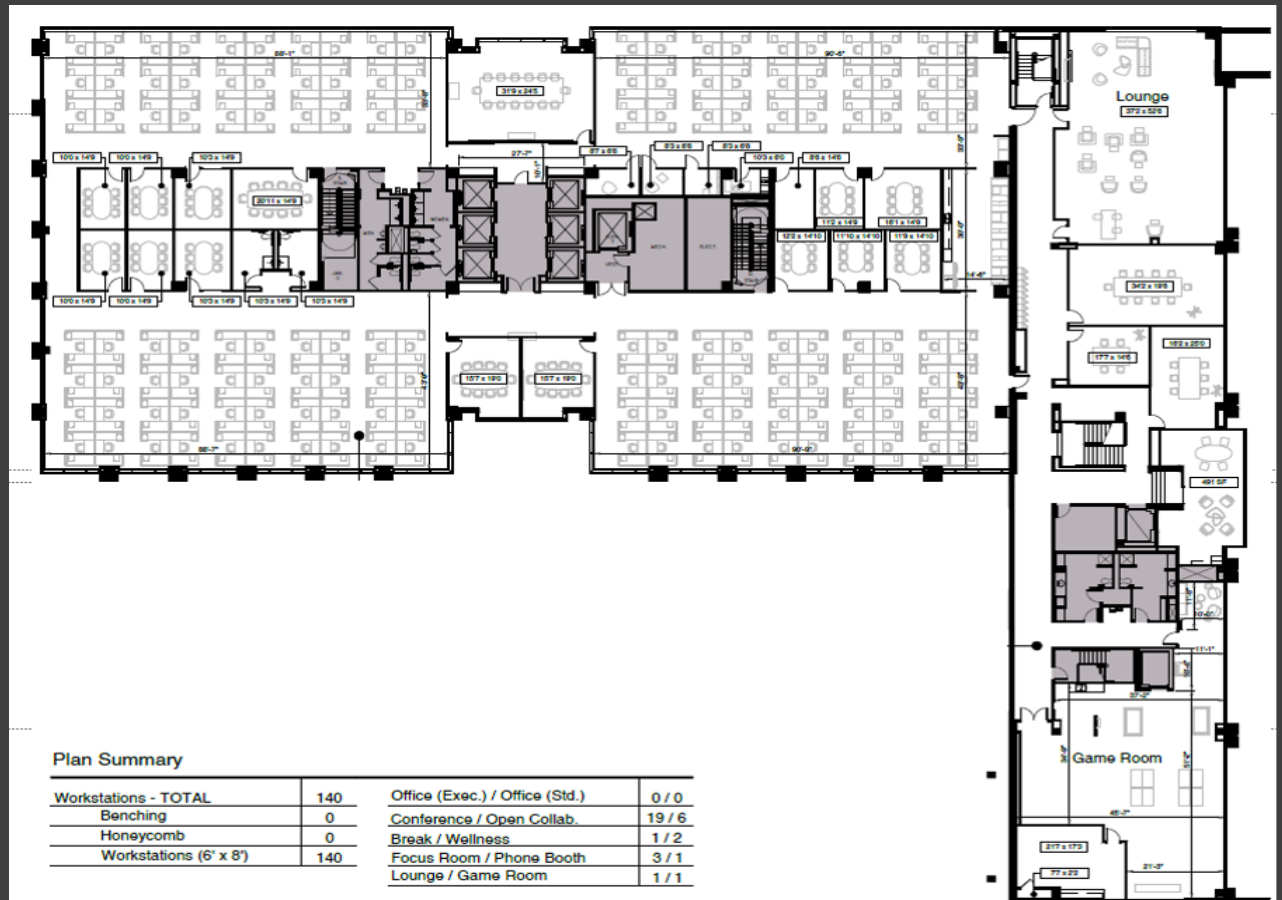


1155 Perimeter Center West | Available Suite



1155 Perimeter Center

SECOND FLOOR | 33,103 RSF



1155 Perimeter Center West | Available Suite



1155 Perimeter Center

THIRD FLOOR | 25,221 RSF

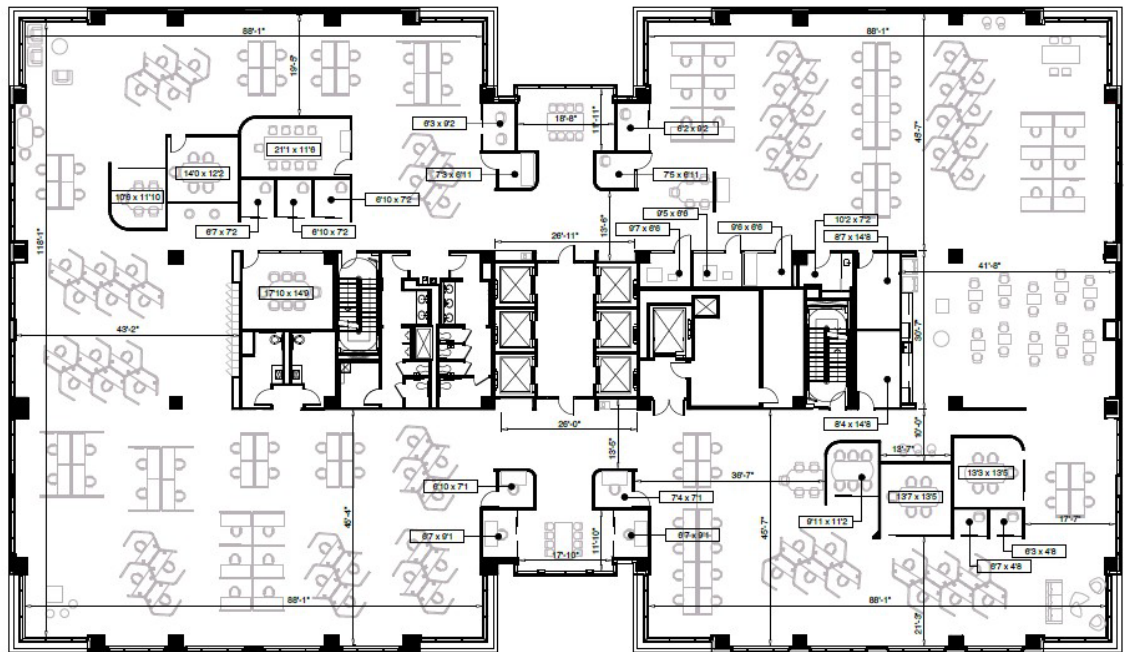


Plan Summary

Workstations - TOTAL	143	Office (Exec.) / Office (Std.)	0 / 0
Benching	60	Conference / Open Collab.	7 / 12
Honeycomb	65	Break / Wellness	1 / 1
Workstations (6' x 6')	18	Focus Room / Phone Booth	16 / 0



True North
Not to Scale



1155 Perimeter Center West | Available Suite



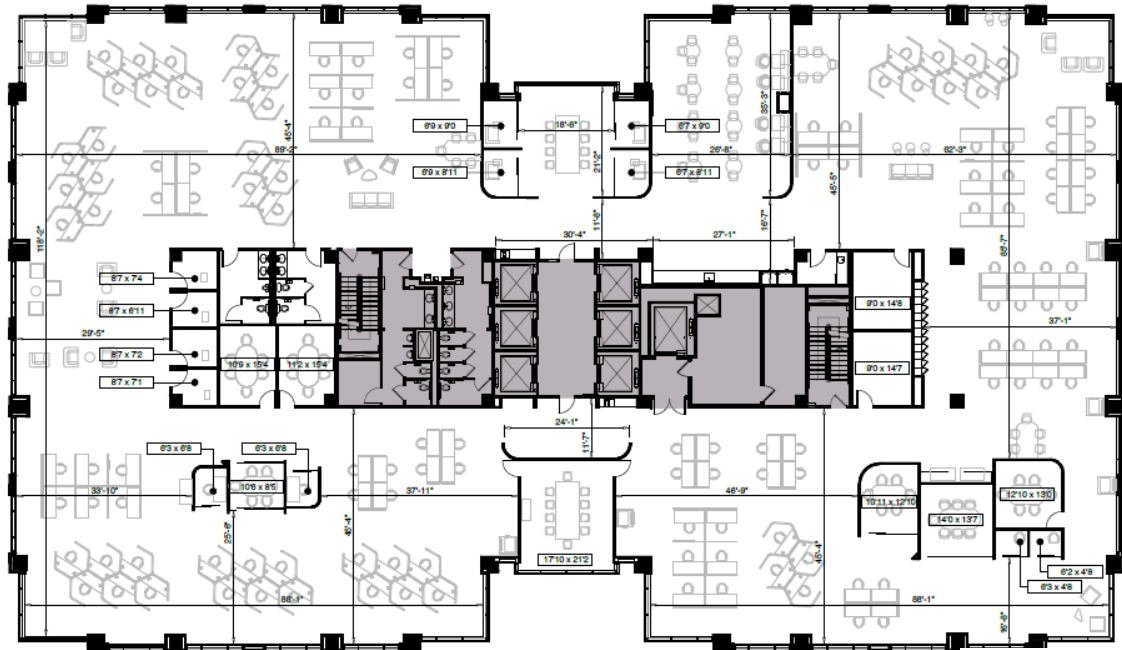
1155 Perimeter Center

FOURTH FLOOR | 25,221 RSF



Plan Summary

Workstations - TOTAL	130	Office (Exec.) / Office (Std.)	0 / 0
Benching	56	Conference / Open Collab.	7 / 13
Honeycomb	50	Break / Wellness	1 / 1
Workstations (6' x 6')	24	Focus Room / Phone Booth	12 / 5

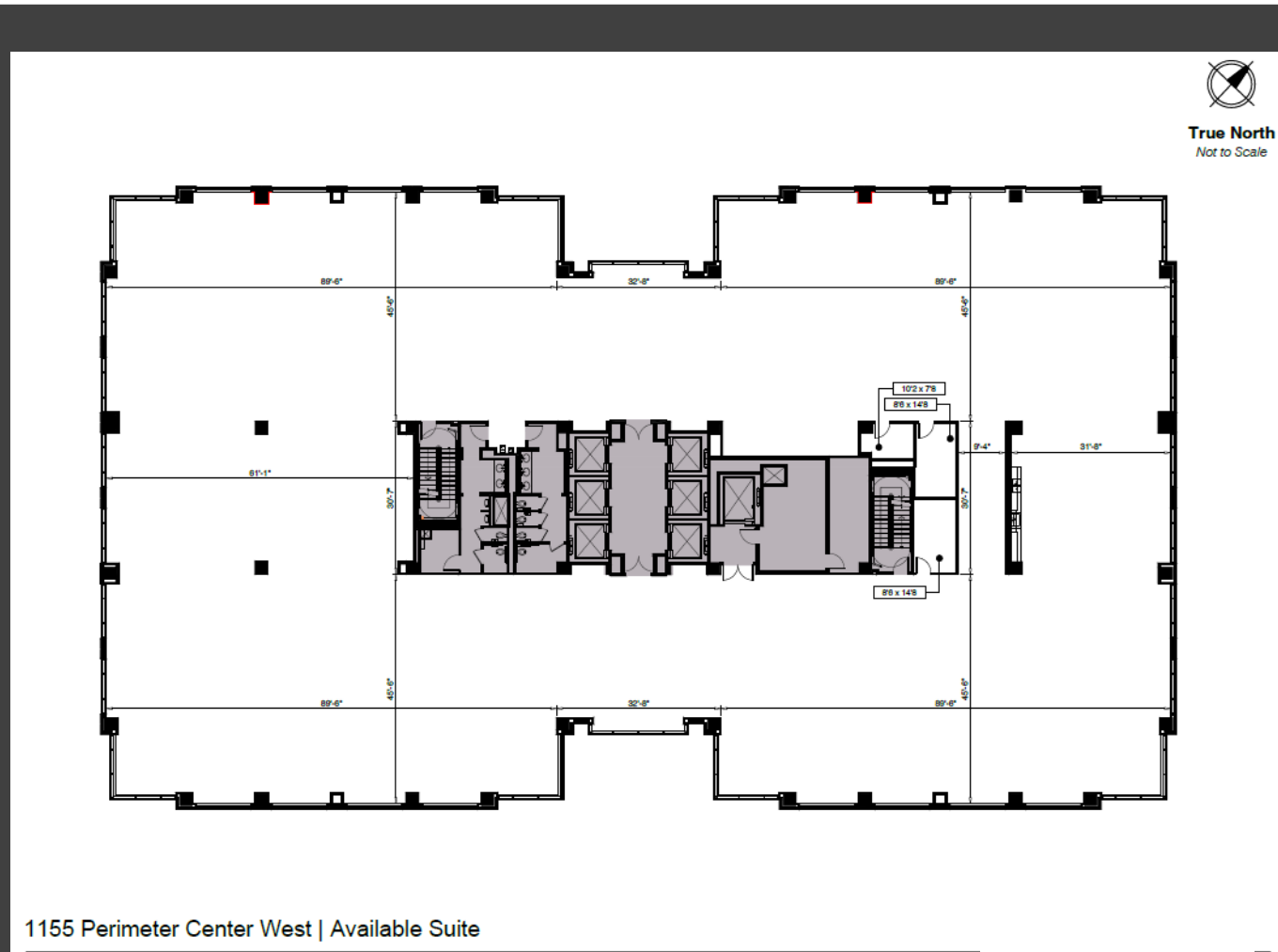
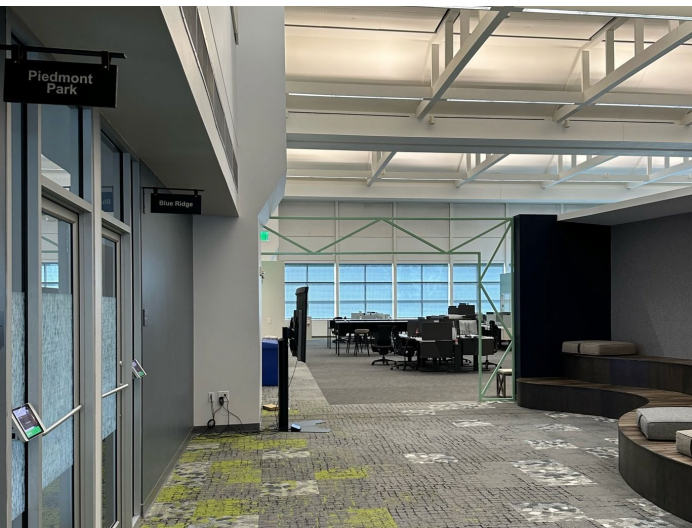


1155 Perimeter Center West | Available Suite



1155 Perimeter Center

FIFTH FLOOR | 25,221 RSF



1155 Perimeter Center West | Available Suite

1155 Perimeter Center

OFFICE SPACE FOR SUBLEASE



Sydney Mayson
Director | Leasing Tenant Representation
+1 404.853.5210
sydney.mayson@cushwake.com

Ken Ashley, CCIM, SIOR, MCR
Executive Director | Leasing Tenant Representation
+1 404.853.5325
ken.ashley@cushwake.com



CUSHMANWAKEFIELD.COM

EXCLUSIVE LEASING AGENT:



©2024 Cushman & Wakefield. All rights reserved. The information contained in this communication is strictly confidential. This information has been obtained from sources believed to be reliable but has not been verified. NO WARRANTY OR REPRESENTATION, EXPRESS OR IMPLIED, IS MADE AS TO THE CONDITION OF THE PROPERTY (OR PROPERTIES) REFERENCED HEREIN OR AS TO THE ACCURACY OR COMPLETENESS OF THE INFORMATION CONTAINED HEREIN, AND SAME IS SUBMITTED SUBJECT TO ERRORS, OMISSIONS, CHANGE OF PRICE, RENTAL OR OTHER CONDITIONS, WITHDRAWAL WITHOUT NOTICE, AND TO ANY SPECIAL LISTING CONDITIONS IMPOSED BY THE PROPERTY OWNER(S). ANY PROJECTIONS, OPINIONS OR ESTIMATES ARE SUBJECT TO UNCERTAINTY AND DO NOT SIGNIFY CURRENT OR FUTURE PROPERTY PERFORMANCE.