



PARK JEFFERSON – Building 7



5630 SHEPHERDSVILLE RD

Louisville, KY 40228

**23,733 SF
FOR LEASE**

PROPERTY HIGHLIGHTS

- 1,800 sf of finished office space
- Three (3) dock-high loading doors – 8' x 10'
- Two (2) drive-in doors – 12' x 10' and 10' x 11'
- LED lighting
- 100% air-conditioned space
- 800 amps; 480 volt; 3-phase power
- 19' – 22' clear height



GREG CHARMOLI

Senior Director

+1 502 589 5150 ext. 238

gcharmoli@commercialkentucky.com

333 E. Main Street, Suite 510 | Louisville, KY 40202

+1 502 589 5150

www.CommercialKentucky.com

©2023 Cushman & Wakefield. All rights reserved. The information contained in this communication is strictly confidential. This information has been obtained from sources believed to be reliable but has not been verified. No warranty or representation, express or implied, is made as to the condition of the property (or properties) referenced herein or as to the accuracy or completeness of the information contained herein, and same is submitted subject to errors, omissions, change of price, rental or other conditions, withdrawal without notice, and to any special listing conditions imposed by the property owner(s). Any projections, opinions or estimates are subject to uncertainty and do not signify current or future property performance.

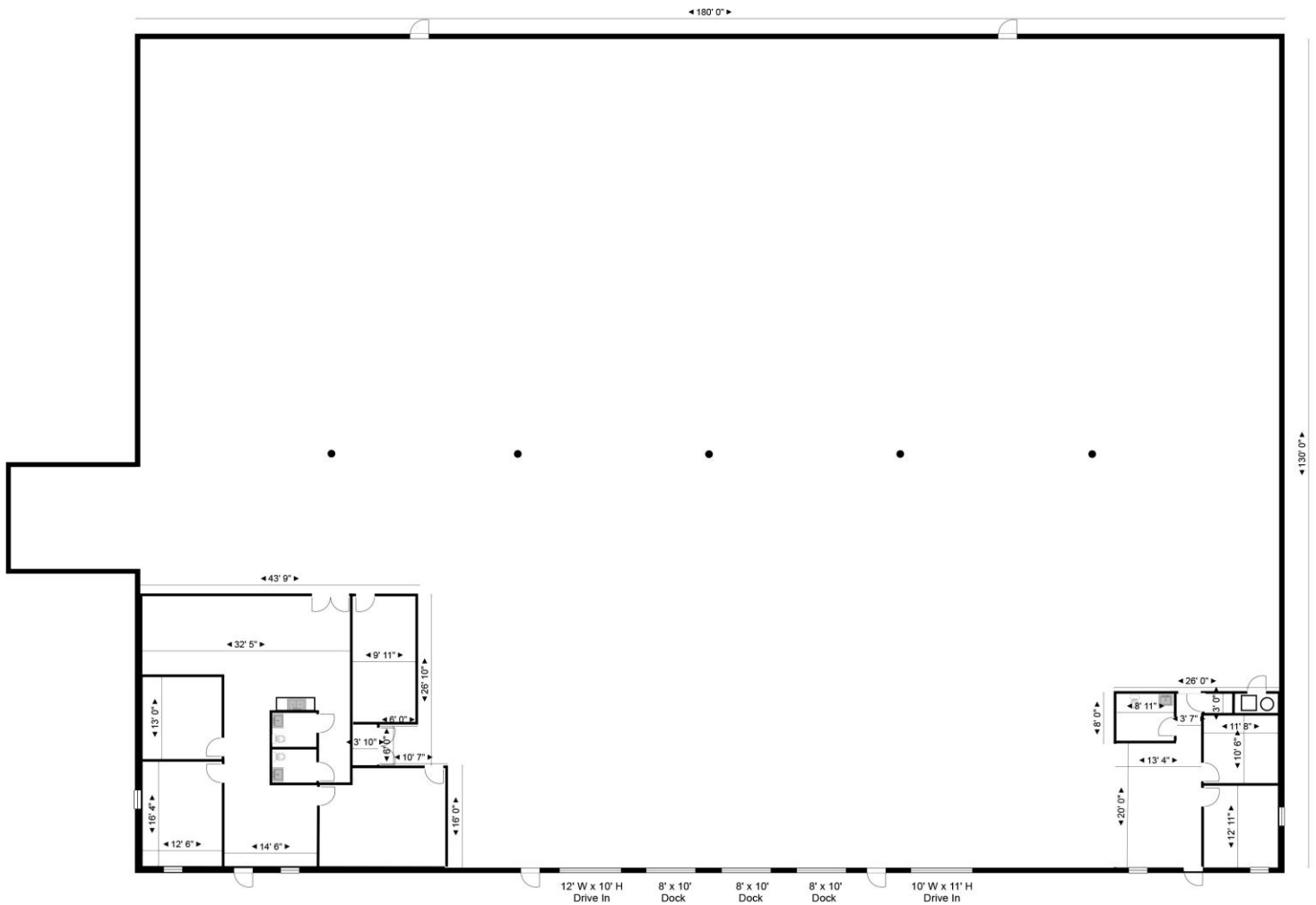
5630 SHEPHERDSVILLE RD

Louisville, KY 40228

23,733 SF FOR LEASE



FLOOR PLAN



GREG CHARMOLI
Senior Director
+1 502 589 5150 ext. 238
gcharmoli@commercialkentucky.com

333 E. Main Street, Suite 510
Louisville, KY 40202
phone: +1 502 589 5150
www.CommercialKentucky.com