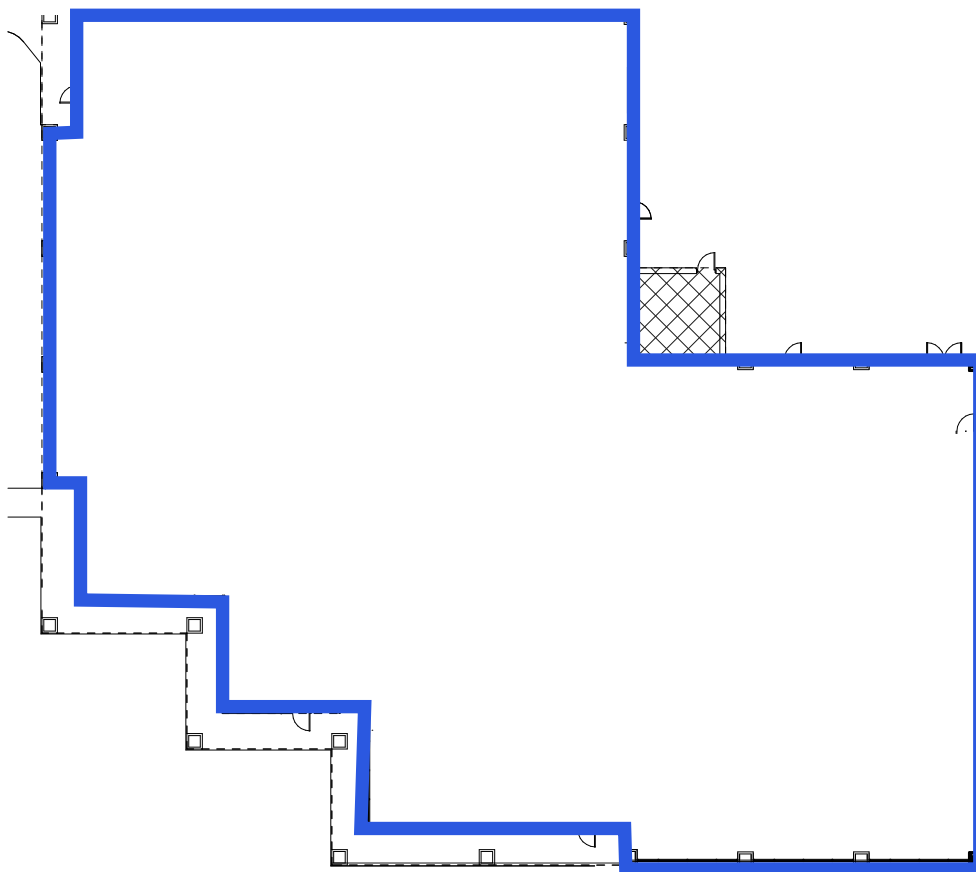
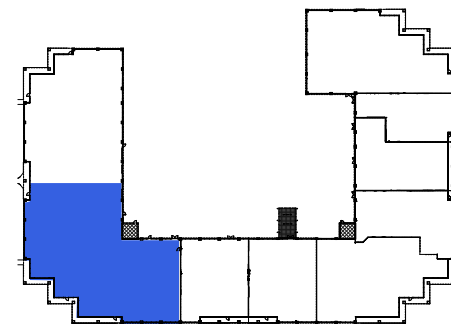


4021 STIRRUP CREEK DRIVE
SUITE 110 | 19,394 SF



SPECIFICATIONS

Building Size	81,289 SF
Clear Height	16'0"
Power	4,000A, 480/277V three phase, four wire
Loading	One shared dock leveler



FOR MORE INFORMATION, PLEASE CONTACT:

KALER MOSELEY
+1 919 352 9569
kaler.moseley@cushwake.com

AMY WATKINS
+1 919 352 9579
amy.watkins@cushwake.com