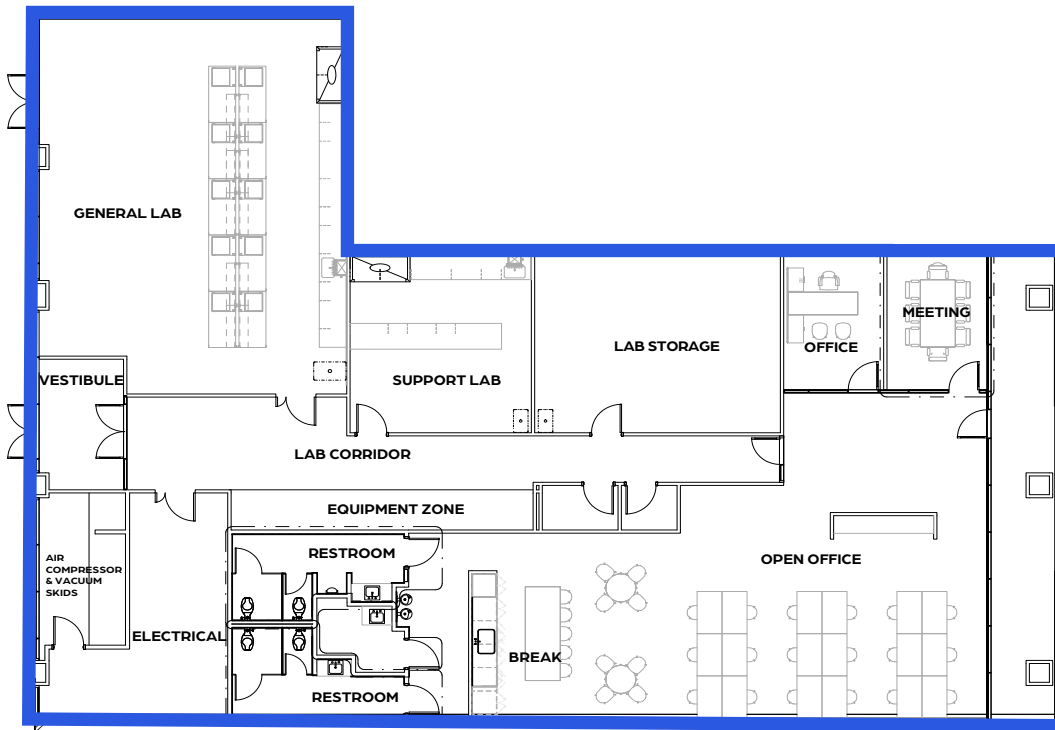
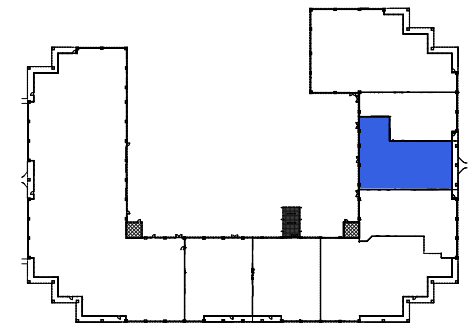


**4021** STIRRUP CREEK DRIVE  
SPEC SUITE | 5,957 SF



## SPECIFICATIONS

Building Size	81,289 SF
Clear Height	16'0"
Power	4,000A, 480/277V three phase, four wire
Loading	One shared dock leveler
Generator	50 kW



FOR MORE INFORMATION, PLEASE CONTACT:

**KALER MOSELEY**  
+1 919 352 9569  
[kaler.moseley@cushwake.com](mailto:kaler.moseley@cushwake.com)

**AMY WATKINS**  
+1 919 352 9579  
[amy.watkins@cushwake.com](mailto:amy.watkins@cushwake.com)