

# EASTWAY VILLAGE DRIVE

Humble, TX 77338



FOR SALE | READY TO DEVELOP SITE



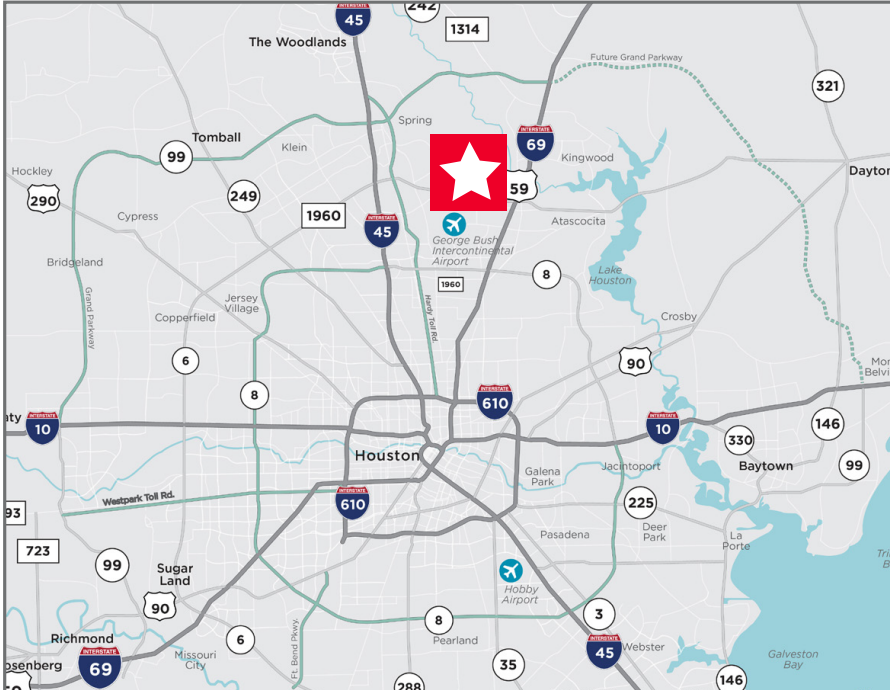
# EASTWAY VILLAGE DRIVE

Humble, TX 77338

## PROPERTY HIGHLIGHTS

- 2.4391 acres
- 220' frontage on Eastway Village Drive
- City of Humble utilities
- 10 minutes to George Bush Intercontinental Airport
- Cleared site, ready to develop
- Great access to FM 1960 and I-69 /US-59
- Traffic counts:
  - I-69 / US-59 - 110,000 cars per day
  - FM 1960 - 29,925 cars per day

## CALL BROKER FOR PRICING GUIDANCE



For more information, please contact:

**Coe Parker, SIOR** | Senior Director | +1 713 963 2825 | [coe.parker@cushwake.com](mailto:coe.parker@cushwake.com)

**B. Kelley Parker III, SIOR** | Vice Chairman | +1 713 963 2896 | [kelley.parker@cushwake.com](mailto:kelley.parker@cushwake.com)

**John F. Littman, SIOR** | Executive Managing Director | +1 713 963 2862 | [john.littman@cushwake.com](mailto:john.littman@cushwake.com)

1330 Post Oak Boulevard  
Suite 2700 | Houston, TX 77056  
+1 713 877 1700  
[cushmanwakefield.com](http://cushmanwakefield.com)



# EASTWAY VILLAGE DRIVE

Humble, TX 77338

## AMENITIES MAP



For more information, please contact:

**Coe Parker, SIOR** | Senior Director | +1 713 963 2825 | [coe.parker@cushwake.com](mailto:coe.parker@cushwake.com)

**B. Kelley Parker III, SIOR** | Vice Chairman | +1 713 963 2896 | [kelley.parker@cushwake.com](mailto:kelley.parker@cushwake.com)

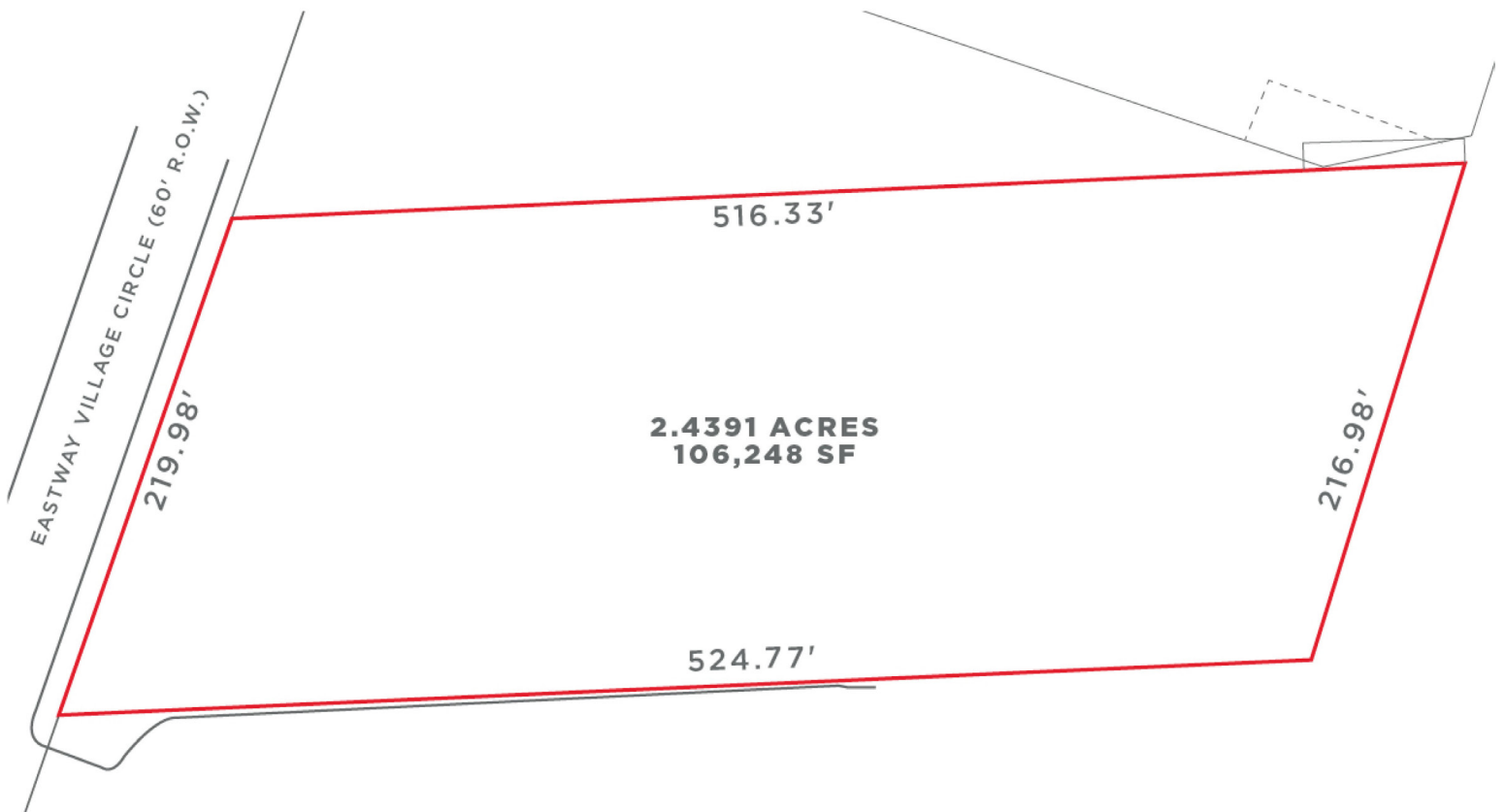
**John F. Littman, SIOR** | Executive Managing Director | +1 713 963 2862 | [john.littman@cushwake.com](mailto:john.littman@cushwake.com)

1330 Post Oak Boulevard  
Suite 2700 | Houston, TX 77056  
+1 713 877 1700  
[cushmanwakefield.com](http://cushmanwakefield.com)

# EASTWAY VILLAGE DRIVE

Humble, TX 77338

## SITE PLAN



For more information, please contact:

**Coe Parker, SIOR** | Senior Director | +1 713 963 2825 | [coe.parker@cushwake.com](mailto:coe.parker@cushwake.com)

**B. Kelley Parker III, SIOR** | Vice Chairman | +1 713 963 2896 | [kelley.parker@cushwake.com](mailto:kelley.parker@cushwake.com)

**John F. Littman, SIOR** | Executive Managing Director | +1 713 963 2862 | [john.littman@cushwake.com](mailto:john.littman@cushwake.com)

1330 Post Oak Boulevard  
Suite 2700 | Houston, TX 77056  
+1 713 877 1700  
[cushmanwakefield.com](http://cushmanwakefield.com)