

EXCELLENT NORTH SAN JOSE LOCATION



PROPERTY FEATURES

Suite 150: ±5,423 SF Available Now!

- Excellent North San Jose Location
- Interior & Exterior Improvements Complete
- Adjacent to Light Rail Station
- Close to Numerous Retail Amenities
- Ample Parking
- Within an Enterprise Zone and Eligible for Tax Incentives
- Convenient Access to Highway 101 & Interstate 880
- Near San Jose International Airport

Jon DeCoite
Managing Director
+1 408 615 3408
jon.decoite@cushwake.com
LIC #01471300

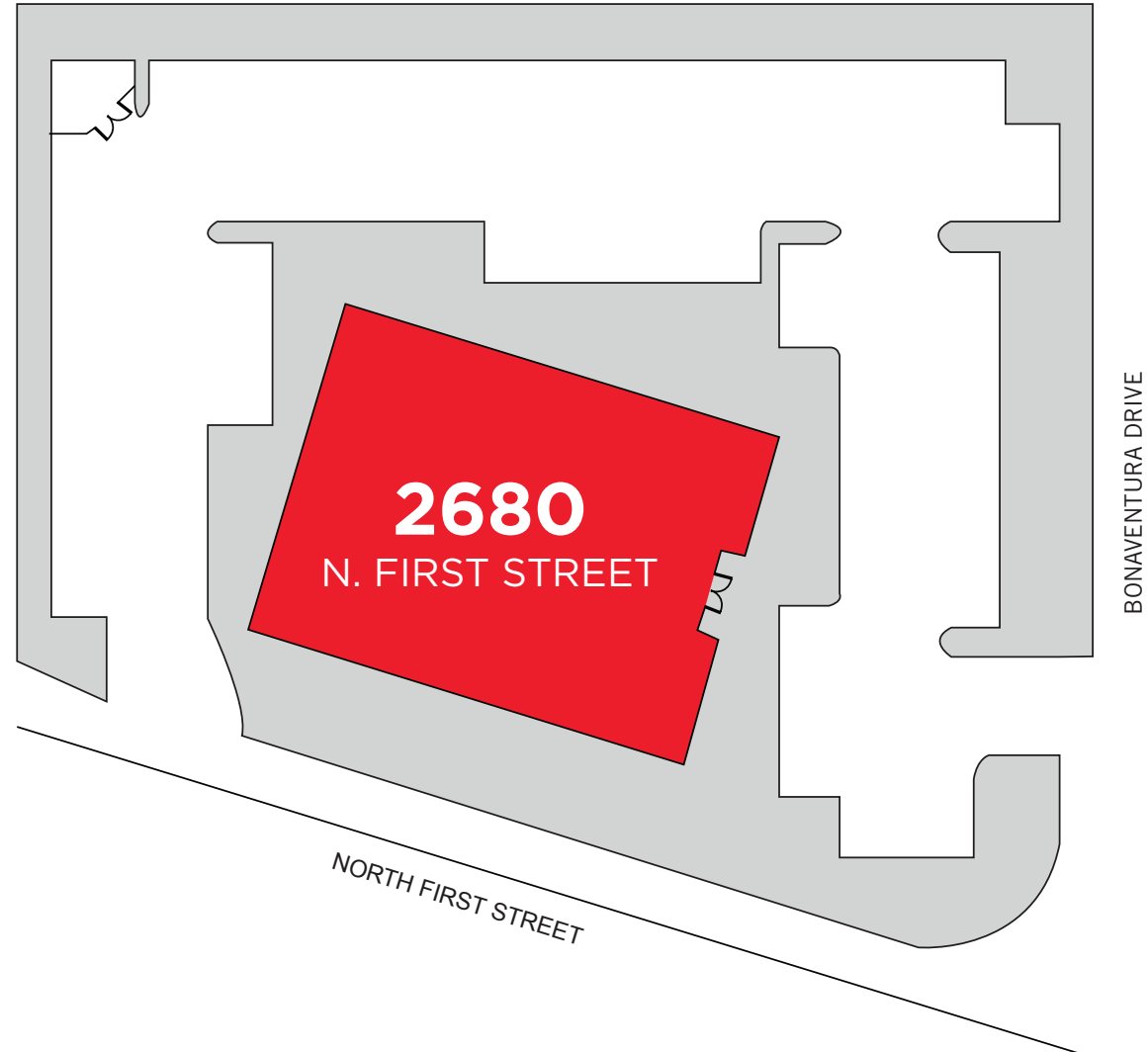
Mike Baker
Director
+1 408 615 3406
mike.baker@cushwake.com
LIC #01884037

300 Santana Row, Fifth Floor
San Jose, California
main +1 408 615 3400

cushmanwakefield.com



SITE PLAN



Jon DeCoite
Managing Director
+1 408 615 3408
jon.decoite@cushwake.com
LIC #01471300

Mike Baker
Director
+1 408 615 3406
mike.baker@cushwake.com
LIC #01884037

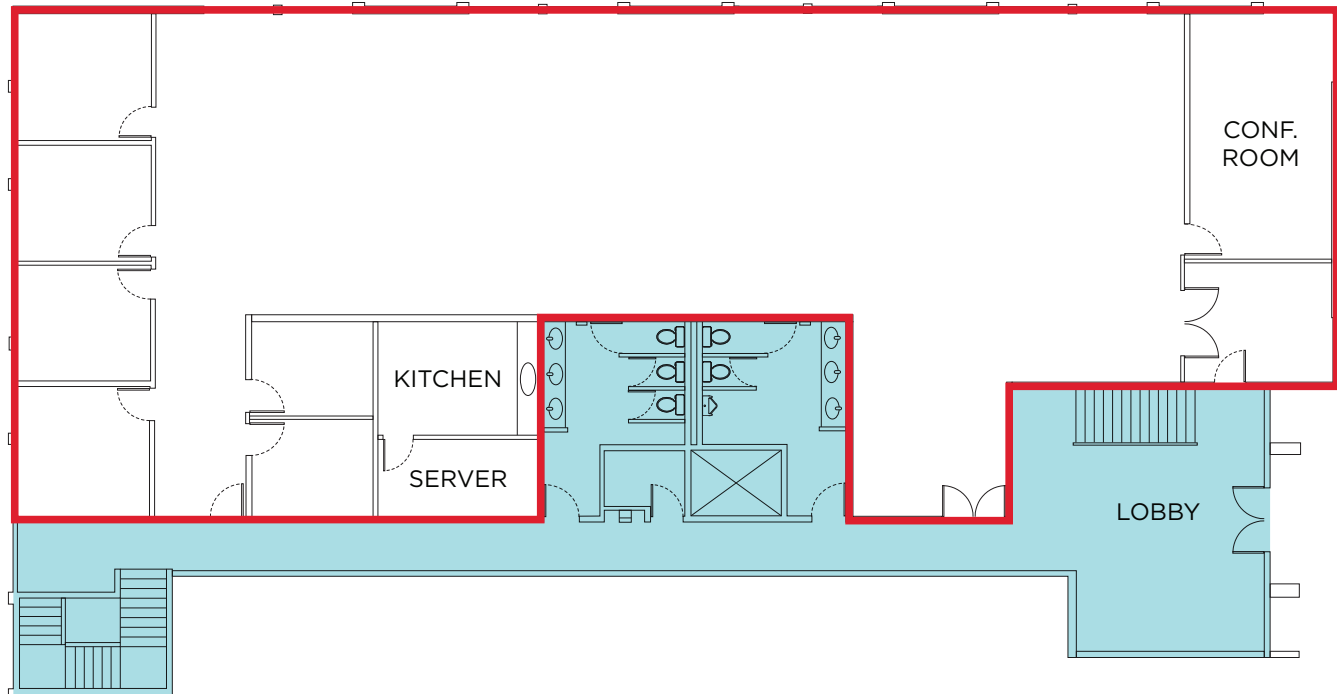
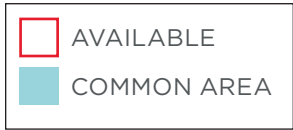
300 Santana Row, Fifth Floor
San Jose, California
main +1 408 615 3400

cushmanwakefield.com

FLOOR PLAN

Suite 150: ±5,423 SF

Available Now



Jon DeCoite
Managing Director
+1 408 615 3408
jon.decoite@cushwake.com
LIC #01471300

Mike Baker
Director
+1 408 615 3406
mike.baker@cushwake.com
LIC #01884037

300 Santana Row, Fifth Floor
San Jose, California
main +1 408 615 3400

cushmanwakefield.com



FOR LEASE

2680 North First Street
San Jose, California

IMAGE GALLERY



Jon DeCoite
Managing Director
+1 408 615 3408
jon.decoite@cushwake.com
LIC #01471300

Mike Baker
Director
+1 408 615 3406
mike.baker@cushwake.com
LIC #01884037

300 Santana Row, Fifth Floor
San Jose, California
main +1 408 615 3400

cushmanwakefield.com

2680 North First Street

San Jose, California

AMENITIES


- Walking distance to Light Rail serving Diridon Station
- Nearby housing, hotels, restaurants, and retail options

Jon DeCoite
 Managing Director
 +1 408 615 3408
 jon.decoite@cushwake.com
 LIC #01471300

Mike Baker
 Director
 +1 408 615 3406
 mike.baker@cushwake.com
 LIC #01884037

300 Santana Row, Fifth Floor
 San Jose, California
 main +1 408 615 3400
cushmanwakefield.com

NEIGHBORING COMPANIES



Jon DeCoite
Managing Director
+1 408 615 3408
jon.decoite@cushwake.com
LIC #01471300

Mike Baker
Director
+1 408 615 3406
mike.baker@cushwake.com
LIC #01884037

300 Santana Row, Fifth Floor
San Jose, California
main +1 408 615 3400
cushmanwakefield.com