

641

Yonge St.

OFFICE SPACES
FOR LEASE
FULL FLOOR
OPPORTUNITIES

CONTACT:

MICHAEL SCACE*

Executive Vice President

416 359 2456

michael.scace@cushwake.com

ALAN RAWN*

Senior Vice President

416 359 2440

alan.rawn@cushwake.com

LAUREN LUCHINI*

Associate Vice President

416 359 2553

lauren.luchini@cushwake.com

Cushman & Wakefield
Brokerage ULC,
161 Bay Street, Suite 1500
Toronto, ON M5J 2S1



PROPERTY SUMMARY

641 Yonge Street is located in the Yonge Street corridor between Isabella Street and Charles Street. This opportunity offers frontage on world-famous Yonge Street and a strong branding opportunity and excellent transit options for employees. Secure a location in the rapidly transforming node with significant existing and future residential density, steps to Toronto's most coveted retailers and public transit.

DETAILS

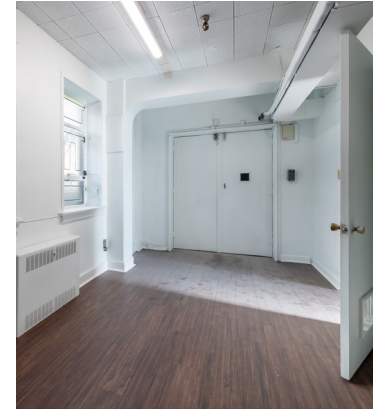
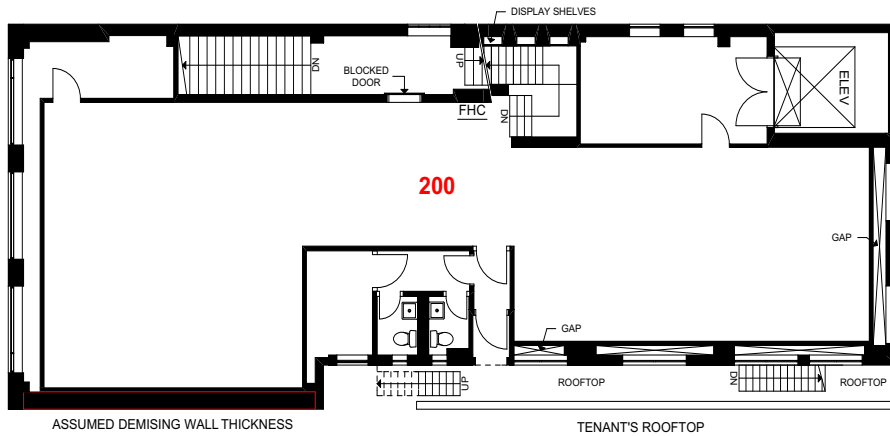
Available Space	2 nd Floor - 2,190 SF 3 rd Floor - 2,259 SF
	Total contiguous: 4,449 SF
Net Ret	\$25.00 PSF
Additional Rent	\$16.30 PSF (2021 est.)
Occupancy	Immediately

HIGHLIGHTS

- High pedestrian and vehicular traffic
- Excellent branding opportunity with spectacular frontage
- Situated between the Bloor-Yonge and Wellesley Subway Stations
- Multi Level opportunity
- Substantial natural light on the third floor
- Great value compared to competitive buildings in the immediate area

FLOORPLANS

2ND FLOOR - 2,190 SF



3RD FLOOR - 2,259 SF

