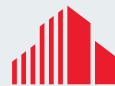




SPACE FOR LEASE 7,015 SF

# HIGHLAND INDUSTRIAL CENTER

3000 S. HIGHLAND DRIVE  
LAS VEGAS, NV 89109



CUSHMAN &  
WAKEFIELD



KRAEMER  
LAND COMPANY



# HIGHLAND INDUSTRIAL CENTER

## 3000 S. HIGHLAND DRIVE, SUITE D1 | LAS VEGAS, NV 89109

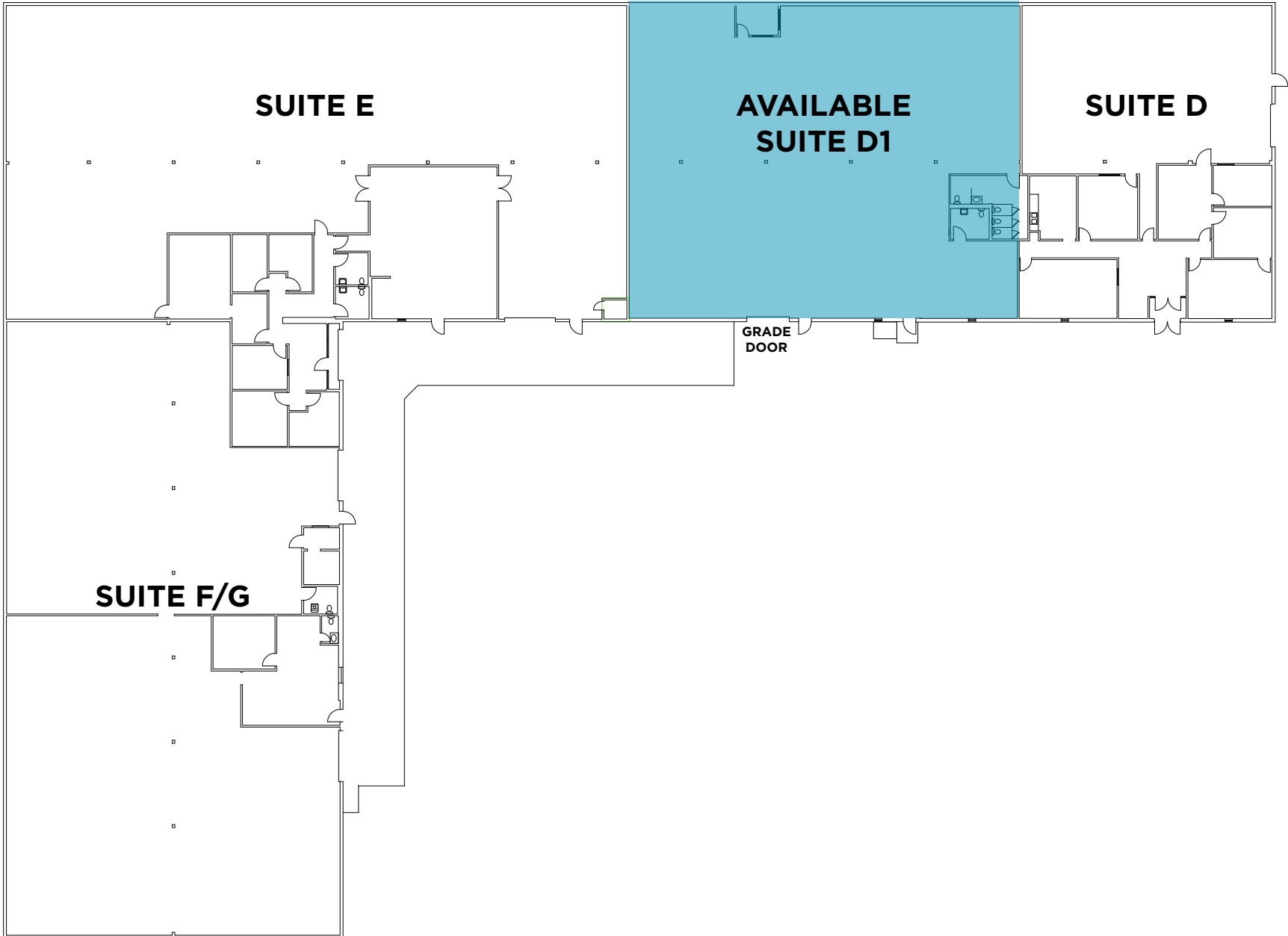
Highland Industrial Center is a ±238,935 square foot project comprised of five (5) industrial buildings, conveniently located minutes from the Las Vegas Strip with easy access to I-15 freeway via Sahara Avenue and the Spring Mountain Interchange. Within miles of the Harry Reid International Airport, Allegiant Stadium and the 215 freeway.



Space Available:	±7,015 SF
Est. NNN Expenses:	\$0.19 PSF
Office:	2 Restrooms
Clear Height:	14'
Grade Level Loading:	1
Parking:	Ample Parking
Single-Phase Power:	TBD
Sprinklers:	Yes
Lighting:	LED
Warehouse:	White Box
Zoning:	M (Industrial District)

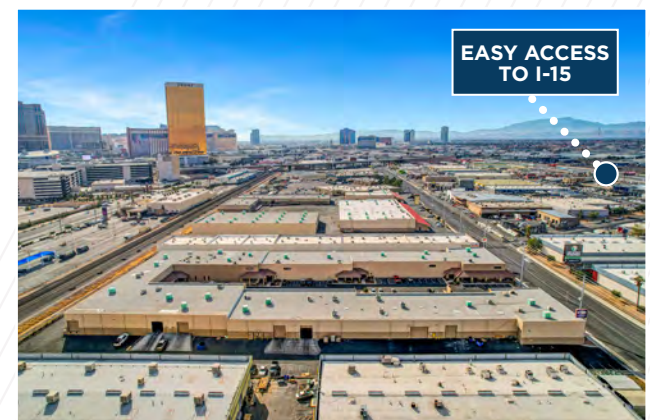
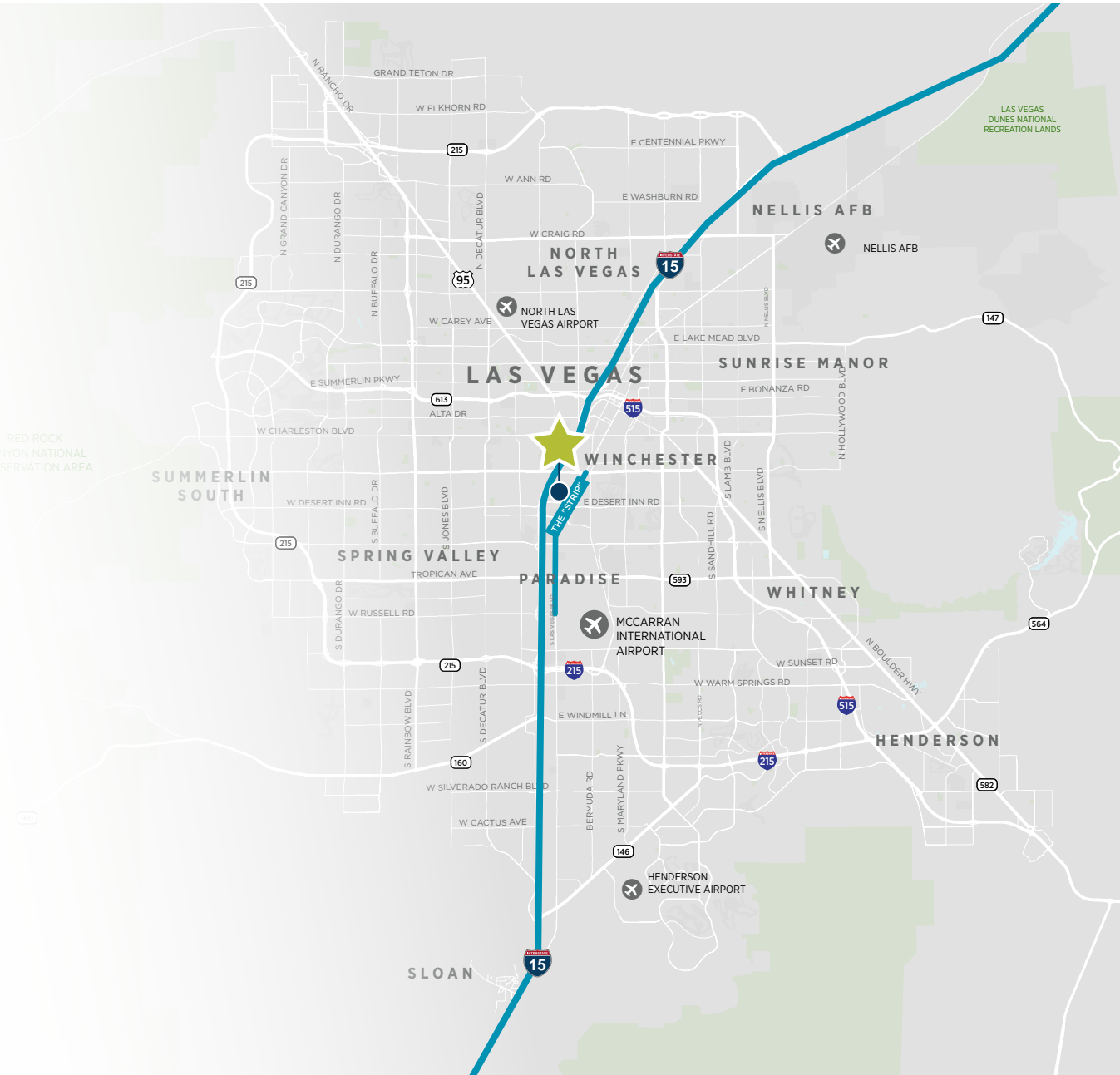
# HIGHLAND INDUSTRIAL CENTER

3000 S. HIGHLAND DRIVE, SUITE D1 | LAS VEGAS, NV 89109



# HIGHLAND INDUSTRIAL CENTER

3000 S. HIGHLAND DRIVE, SUITE D1 | LAS VEGAS, NV 89109







**FOR MORE INFORMATION, CONTACT:**

**NICK ABRAHAM**

Director  
+1 702 605 1620  
nick.abraham@cushwake.com

**DONNA ALDERSON, SIOR**

Executive Managing Director  
+1 702 605 1692  
donna.alderson@cushwake.com

©2021 Cushman & Wakefield. All rights reserved. The material in this presentation has been prepared solely for information purposes, and is strictly confidential. Any disclosure, use, copying or circulation of this presentation (or the information contained within it) is strictly prohibited, unless you have obtained Cushman & Wakefield's prior written consent. The views expressed in this presentation are the views of the author and do not necessarily reflect the views of Cushman & Wakefield. Neither this presentation nor any part of it shall form the basis of, or be relied upon in connection with any offer, or act as an inducement to enter into any contract or commitment whatsoever. NO REPRESENTATION OR WARRANTY IS GIVEN, EXPRESS OR IMPLIED, AS TO THE ACCURACY OF THE INFORMATION CONTAINED WITHIN THIS PRESENTATION, AND CUSHMAN & WAKEFIELD IS UNDER NO OBLIGATION TO SUBSEQUENTLY CORRECT IT IN THE EVENT OF ERRORS.

