



FOR LEASE

Suite 114: ±2,354 SF (Available Now)

Suite 110: ±8,352 SF (Available Now)

PROPERTY HIGHLIGHTS:

- R&D Lab / Light Manufacturing
- Silicon Valley Power (SVP) Provides Utility Cost Savings
- 3.7/1,000 Parking Ratio
- Sprinklered
- Comcast and Comcast Business
- Call for Tours



Mike Baker
Director

P +1 408 893 0249

mike.baker@cushwake.com

LIC #00188403

Jon DeCoite
Managing Director

P +1 408 834 3499

jon.decoite@cushwake.com

LIC #01471300

300 Santana Row, Fifth Floor

San Jose, CA 95128

T +1 408 615 3400

cushmanwakefield.com

SITE PLAN

Suite 114: ±2,354 SF

Suite 110: ±8,352 SF



Mike Baker
Director
P +1 408 893 0249
mike.baker@cushwake.com
LIC #00188403

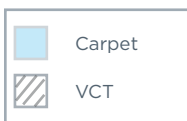
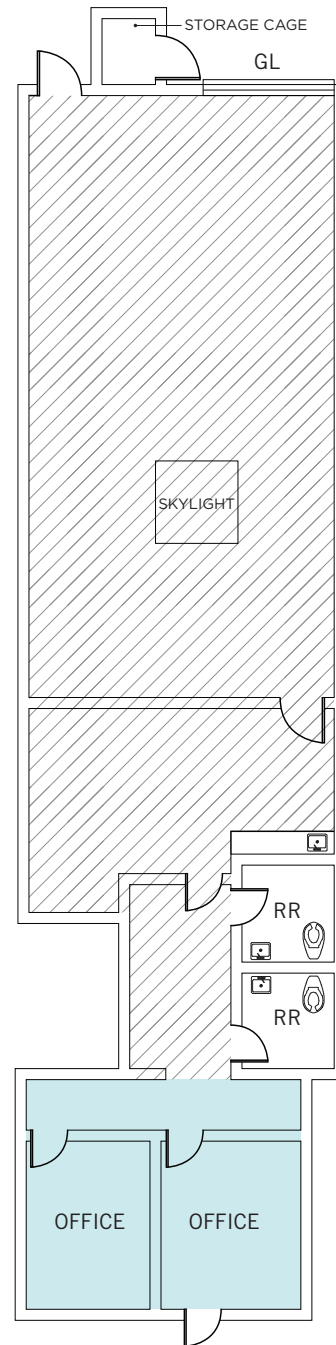
Jon DeCoite
Managing Director
P +1 408 834 3499
jon.decoite@cushwake.com
LIC #01471300

300 Santana Row, Fifth Floor
San Jose, CA 95128
T +1 408 615 3400
cushmanwakefield.com

FLOOR PLAN

Suite 114: ±2,354 SF Available Now

- R&D/Light Manufacturing
- 55% Manufacturing-Warehouse and 45% Office
- Sprinklered
- 200 Amps @ 110/220 Volts
- Kitchenette
- One (1) Grade Level Loading Door



Mike Baker
Director

P +1 408 893 0249
mike.baker@cushwake.com
LIC #00188403

Jon DeCoite
Managing Director

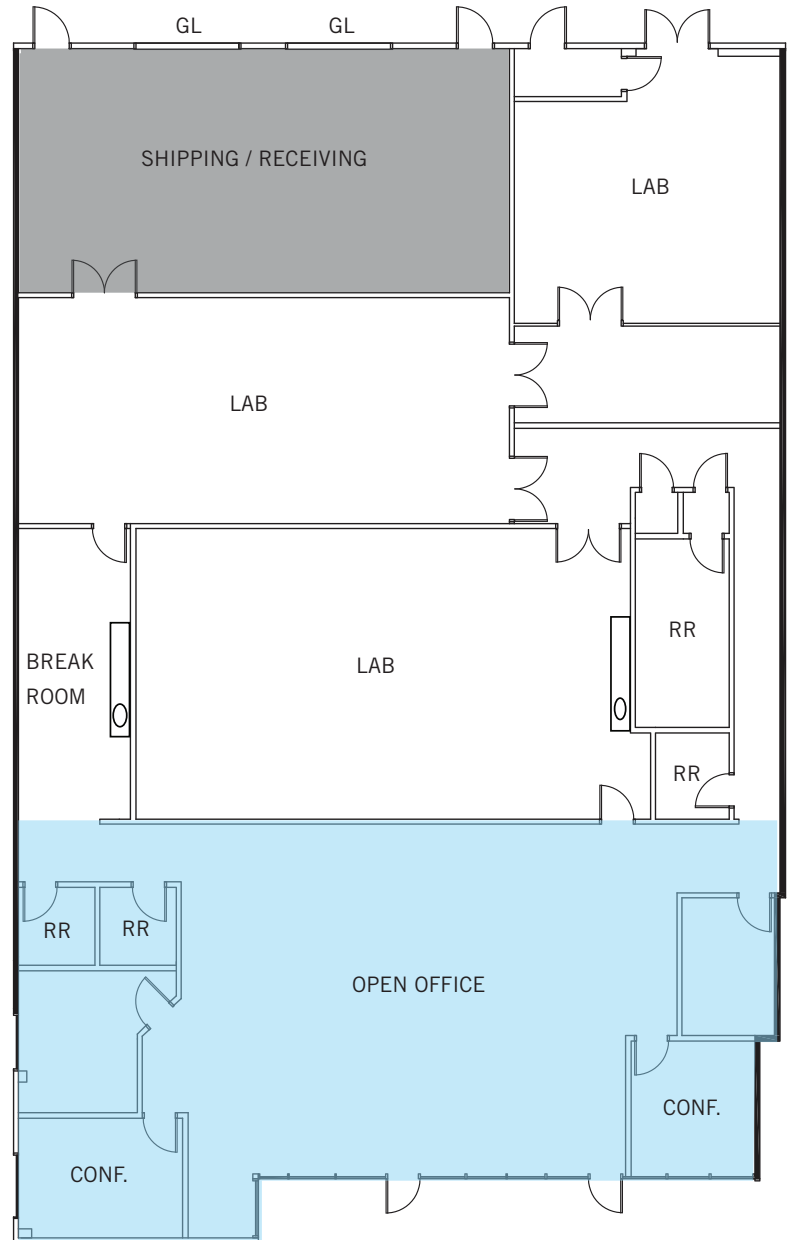
P +1 408 834 3499
jon.decoite@cushwake.com
LIC #01471300


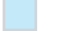

300 Santana Row, Fifth Floor
San Jose, CA 95128
T +1 408 615 3400
cushmanwakefield.com

FLOOR PLAN

Suite 110: ±8,352 SF Available Now

- R&D Lab/Light Manufacturing
- Wet Lab
- 225 Amps @ 277/480 With Step Down to 400 + Amps @110/220 Volts
- Kitchen/Break Area
- (2) 12' High Grade Level Loading Doors
- 14' Clear in Rear; 9' Clear under T-Bar



	Concrete
	Carpet
	VCT

Mike Baker
Director
P +1 408 893 0249
mike.baker@cushwake.com
LIC #00188403

Jon DeCoite
Managing Director
P +1 408 834 3499
jon.decoite@cushwake.com
LIC #01471300

300 Santana Row, Fifth Floor
San Jose, CA 95128
T +1 408 615 3400
cushmanwakefield.com