

HUMBOLD INDUSTRIAL PARK



For more information please contact:

ZARKO STOJANOVIC**

VICE PRESIDENT

D: 416.756.5440 | M: 416.219.0716

zarko.stojanovic@cushwake.com



CUSHMAN & WAKEFIELD ULC
3100 Steeles Avenue East, Suite 1100
Markham, ON L3R 8T3
416 494 9500
cushmanwakefield.com

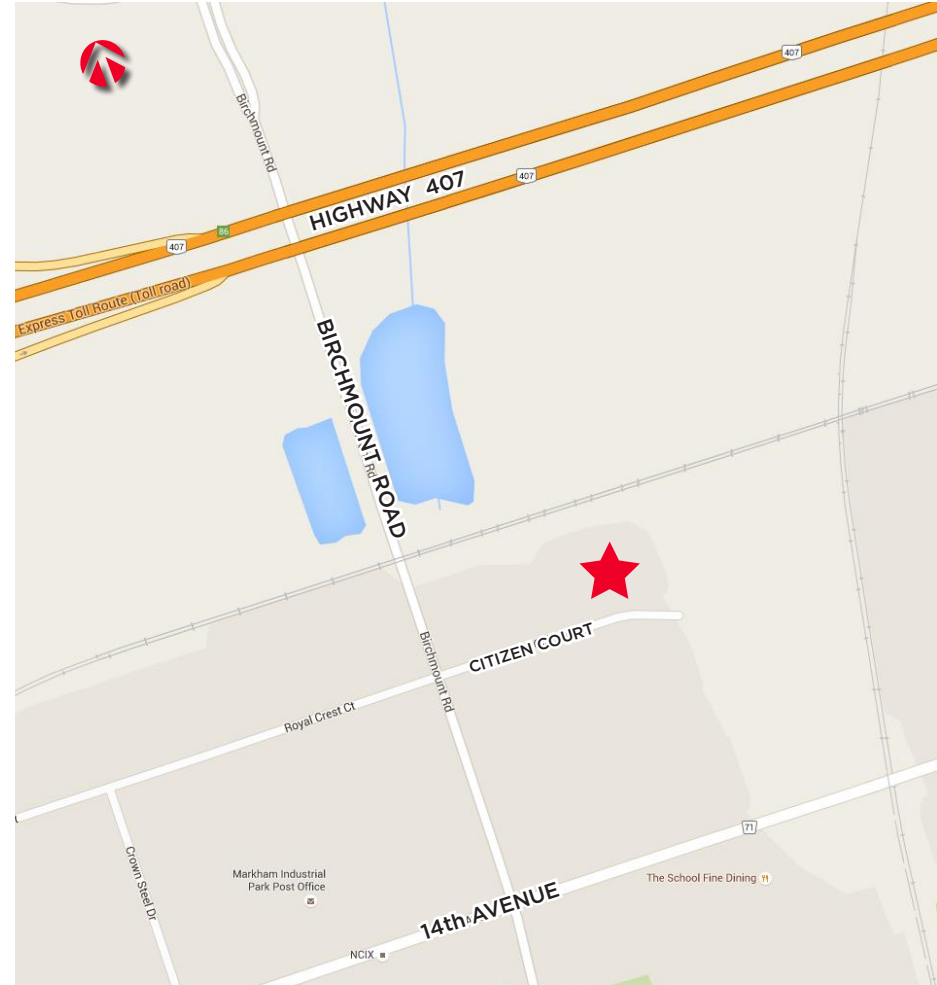
PROPERTY DETAILS:

	UNIT 10
SIZE:	5,885 SF
OFFICE AREA:	90%
INDUSTRIAL AREA:	10%
ZONING:	MC 40%
CLEAR HEIGHT:	18 feet
SHIPPING:	2 Drive In
ASKING NET RATE:	\$18.00

* TMI is \$5.50 psf for all units for year 2024

COMMENTS:

- **Flex Industrial / Office Space**
- Attractive White Precast Glass Building
- Great Parking
- Available Signage
- Excellent Landlord
- 1 Minute to Hwy 407 Interchange
- Landlord Will Remove Office Space



For more information please contact:

ZARKO STOJANOVIC**

VICE PRESIDENT

D: 416.756.5440 | M: 416.219.0716

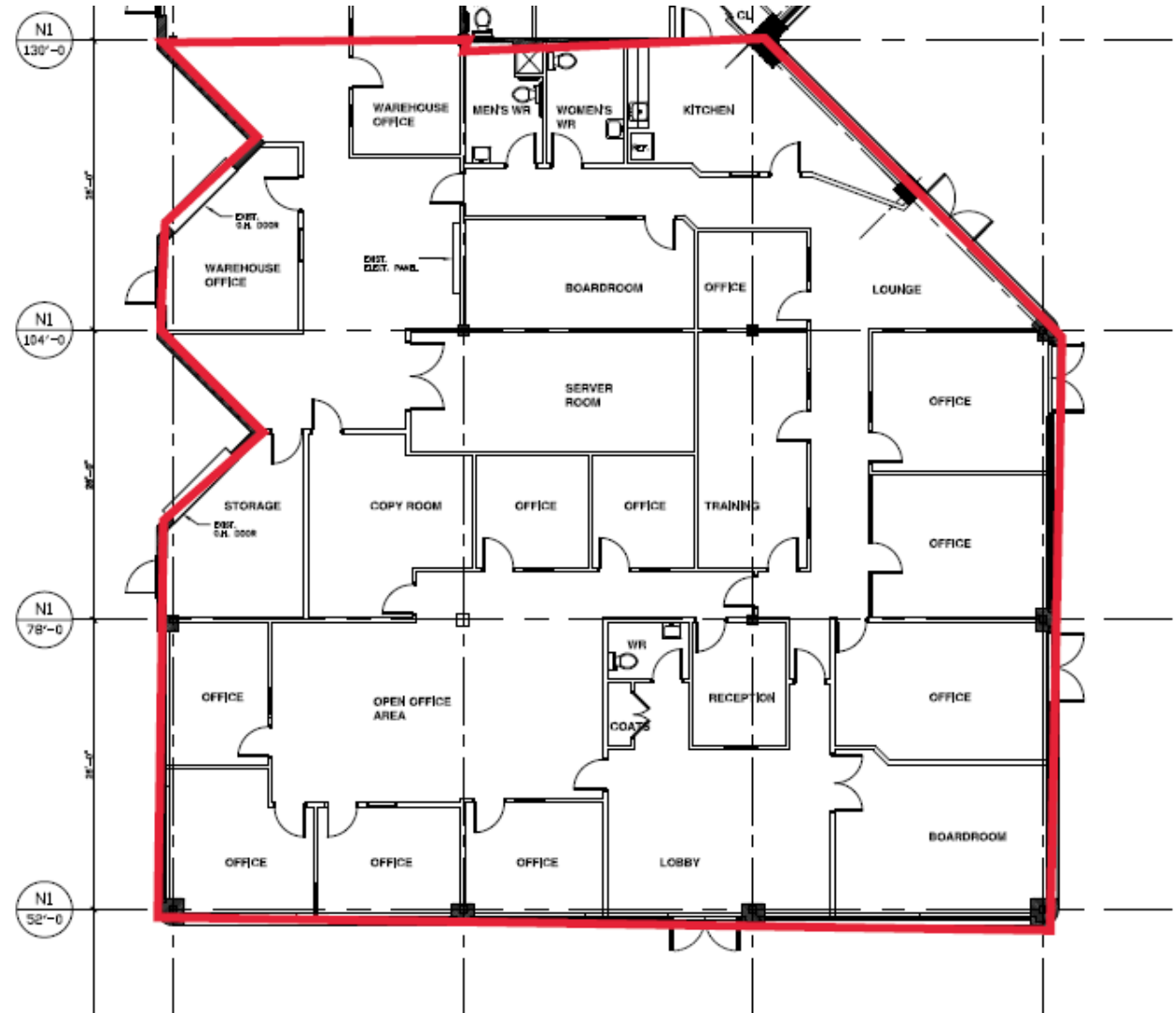
zarko.stojanovic@cushwake.com



CUSHMAN & WAKEFIELD ULC
3100 Steeles Avenue East, Suite 1100
Markham, ON L3R 8T3
416 494 9500
cushmanwakefield.com

FLOOR PLANS:

Unit 1, 2, 3 - 5,885 SF



For more information please contact:

ZARKO STOJANOVIC**

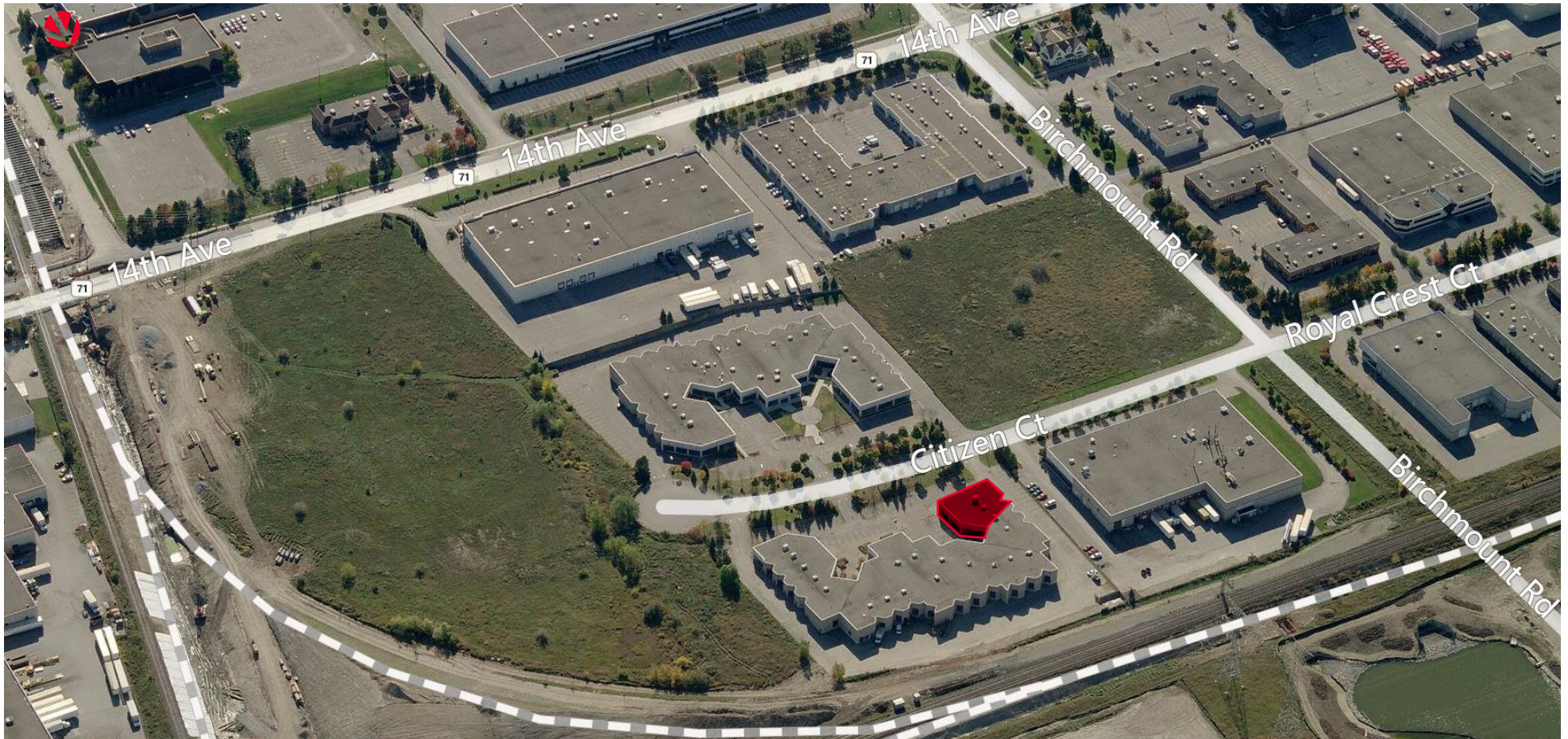
VICE PRESIDENT

D: 416.756.5440 | M: 416.219.0716

zarko.stojanovic@cushwake.com

CUSHMAN & WAKEFIELD ULC
3100 Steeles Avenue East, Suite 1100
Markham, ON L3R 8T3
416 494 9500
cushmanwakefield.com

AERIAL



For more information please contact:

ZARKO STOJANOVIC**

VICE PRESIDENT

D: 416.756.5440 | M: 416.219.0716

zarko.stojanovic@cushwake.com



CUSHMAN & WAKEFIELD ULC
3100 Steeles Avenue East, Suite 1100
Markham, ON L3R 8T3
416 494 9500
cushmanwakefield.com