

hullmark

OFFICE SPACE
FOR LEASE

100

**BROADVIEW
AVENUE**
TORONTO



PROPERTY SUMMARY

100 Broadview is located just south of the Broadview Hotel and the bustling Queen Street East strip. The Riverside and neighbouring Leslieville areas have emerged as Toronto's hippest places to dine, drink, shop and live. The Property is accessible via the Queen & King streetcar lines, which offer a short 10-minute commute to the financial core.

DETAILS

Available Space: Suite 300 - 9,017 SF

Net Rent: Contact listing agents

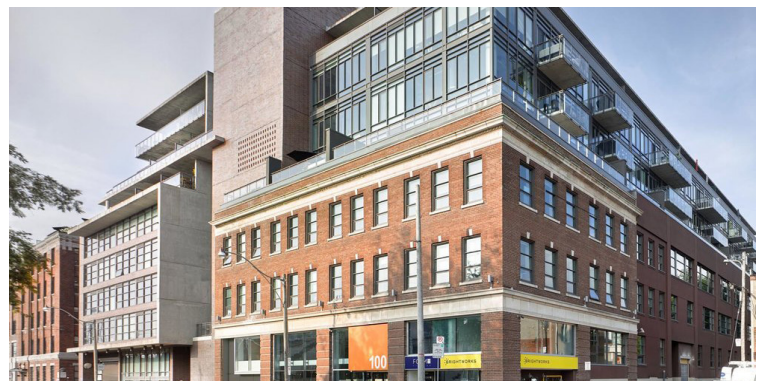
Additional Rent: \$13.50 psf (est. 2024)

Parking:

- \$185/stall aboveground
- \$285/stall underground

HIGHLIGHTS

- ▶ Recently retrofitted and award-winning character building, located in Riverside neighbourhood
- ▶ Open concept space, featuring polished concrete floors and high exposed ceilings
- ▶ Ample secure bike and parking available
- ▶ Passenger elevator providing access to all suites
- ▶ On site amenities include café and AnyTime Fitness

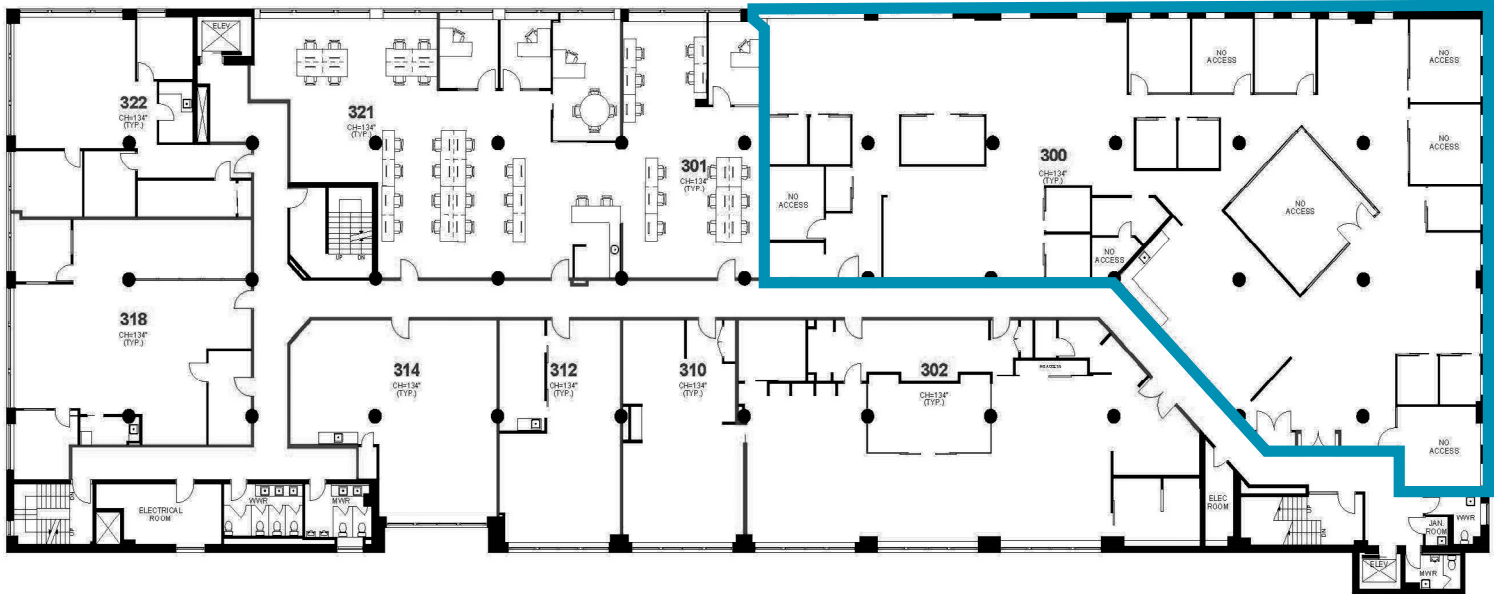


100 BROADVIEW AVENUE TORONTO

OFFICE SPACE FOR LEASE



Suite 300: 9,017 SF



- Built out with 7 offices/meeting rooms, 9 call rooms, kitchenette, boardroom and open area
- Polished concrete and exposed ceilings
- Corner unit with ample natural light



100
BROADVIEW
AVENUE
TORONTO

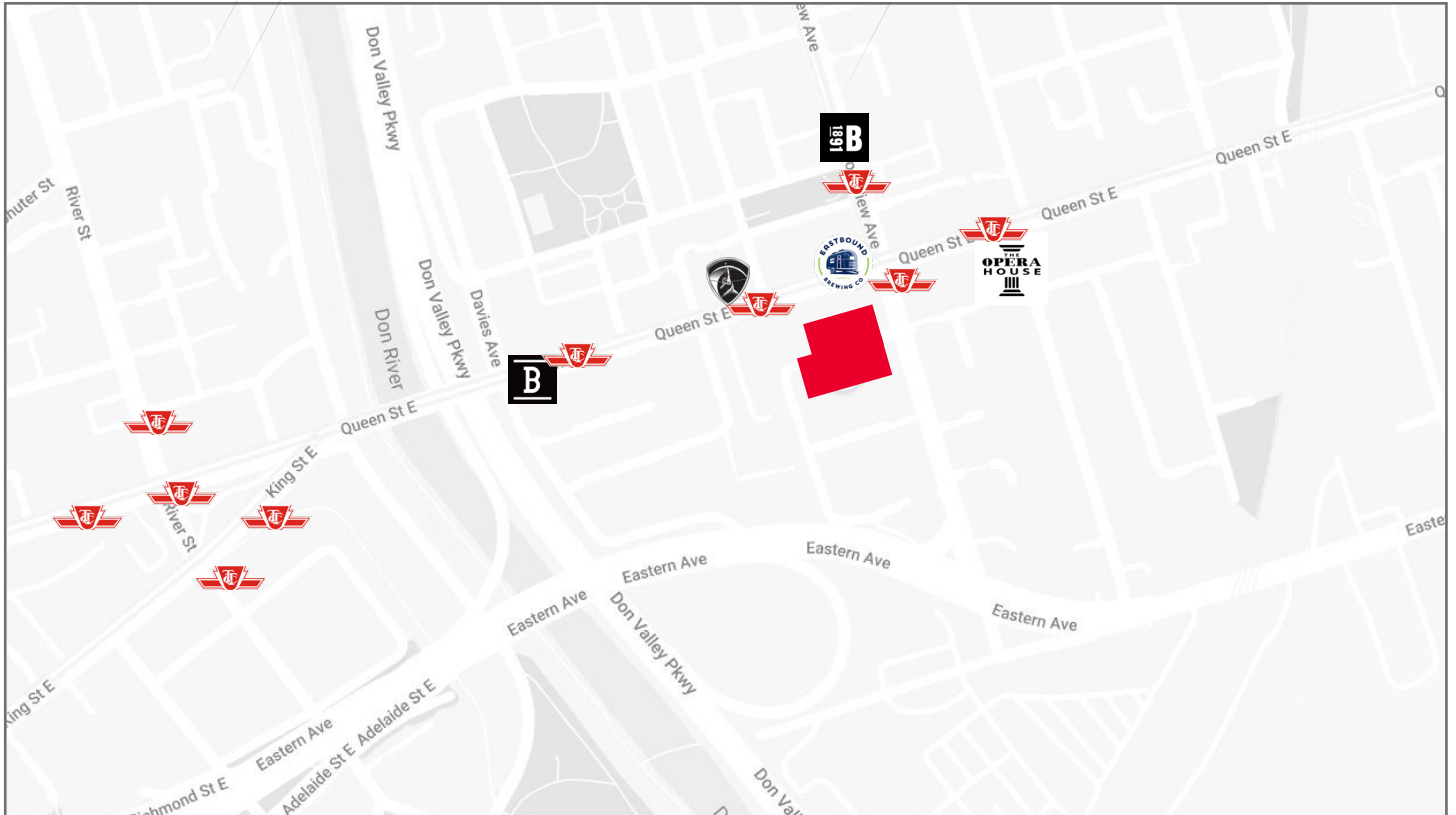
OFFICE SPACE
FOR LEASE



Suite 300: 9,017 SF




LOCAL FAVOURITES




100 Broadview Avenue

 **Fitness Gym**
Studio Lagree

 **Restaurant/Bar**
Eastbound Brewing Co.

 **Coffee Shop**
Blackbird Baking Co.

 **Hotel**
The Broadview Hotel

 **Venue**
The Opera House

DEMOGRAPHICS



WALK SCORE
86/100



**AVG. HOUSEHOLD
INCOME**
\$93,215



POPULATION
21,182



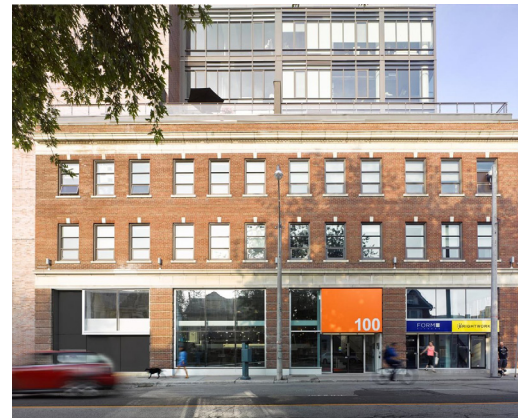
**AVG. DAYTIME
POPULATION**
21,433



TRANSIT SCORE
89/100

100 BROADVIEW AVENUE TORONTO

OFFICE SPACE FOR LEASE



FOR MORE INFORMATION PLEASE CONTACT:

LAUREN LUCHINI*
Associate Vice President
416 359 2553
lauren.luchini@cushwake.com

ALAN RAWN*
Senior Vice President
416 359 2440
alan.rawn@cushwake.com

BRENDAN SHEA*
Senior Associate
905 501 6426
brendan.shea@cushwake.com

Cushman & Wakefield ULC, Brokerage | 161 Bay Street, Suite 1500, Toronto, ON M5J 2S1 | cushmanwakefield.com

©2024 Cushman & Wakefield ULC, Brokerage. All rights reserved. The information contained in this communication is strictly confidential. This information has been obtained from sources believed to be reliable but has not been verified. No warranty or representation, express or implied, is made as to the condition of the property (or properties) referenced herein or as to the accuracy or completeness of the information contained herein, and same is submitted subject to errors, omissions, change of price, rental or other conditions, withdrawal without notice, and to any special listing conditions imposed by the property owner(s). Any projections, opinions or estimates are subject to uncertainty and do not signify current or future property performance. *Sales Representative