

FOR LEASE

504

**WELLINGTON ST. W.**  
**TORONTO, ON**

Full Building Availability with Newly Renovated Lobby  
From 10,075 SF – 15,429 SF



# PROPERTY DETAILS

---

## AVAILABILITIES

**1st Floor Suite:** 697 SF

**2nd Floor Suite:** 4,587 SF

**3rd Floor Suite:** 4,791 SF

**Contiguous Total:** 10,075 SF

**Suite 110:** 1,921 SF

**Basement:** 3,433 SF

**Full Building:** 15,429 SF

## NET RENT

Please Contact Listing Agent

## ADDITIONAL RENT

\$19.00 (2024 est.)

## CO-OP COMMISSION

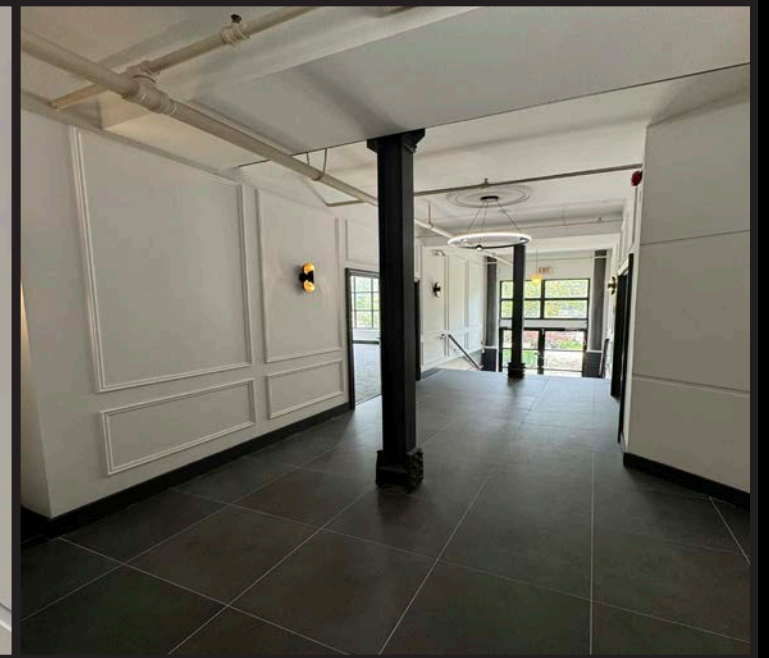
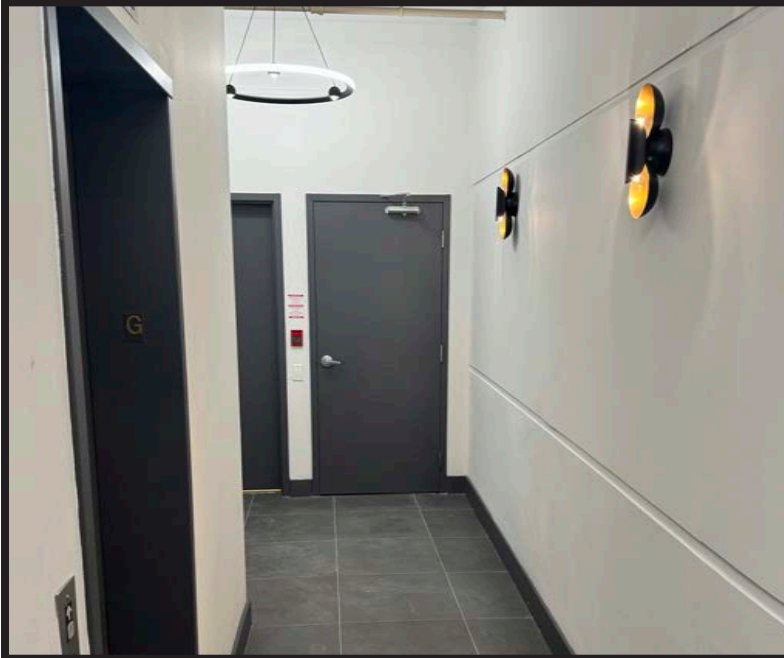
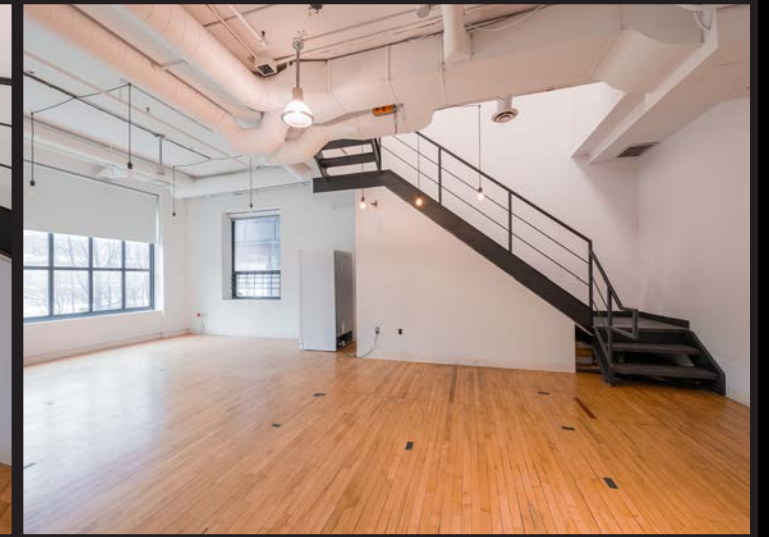
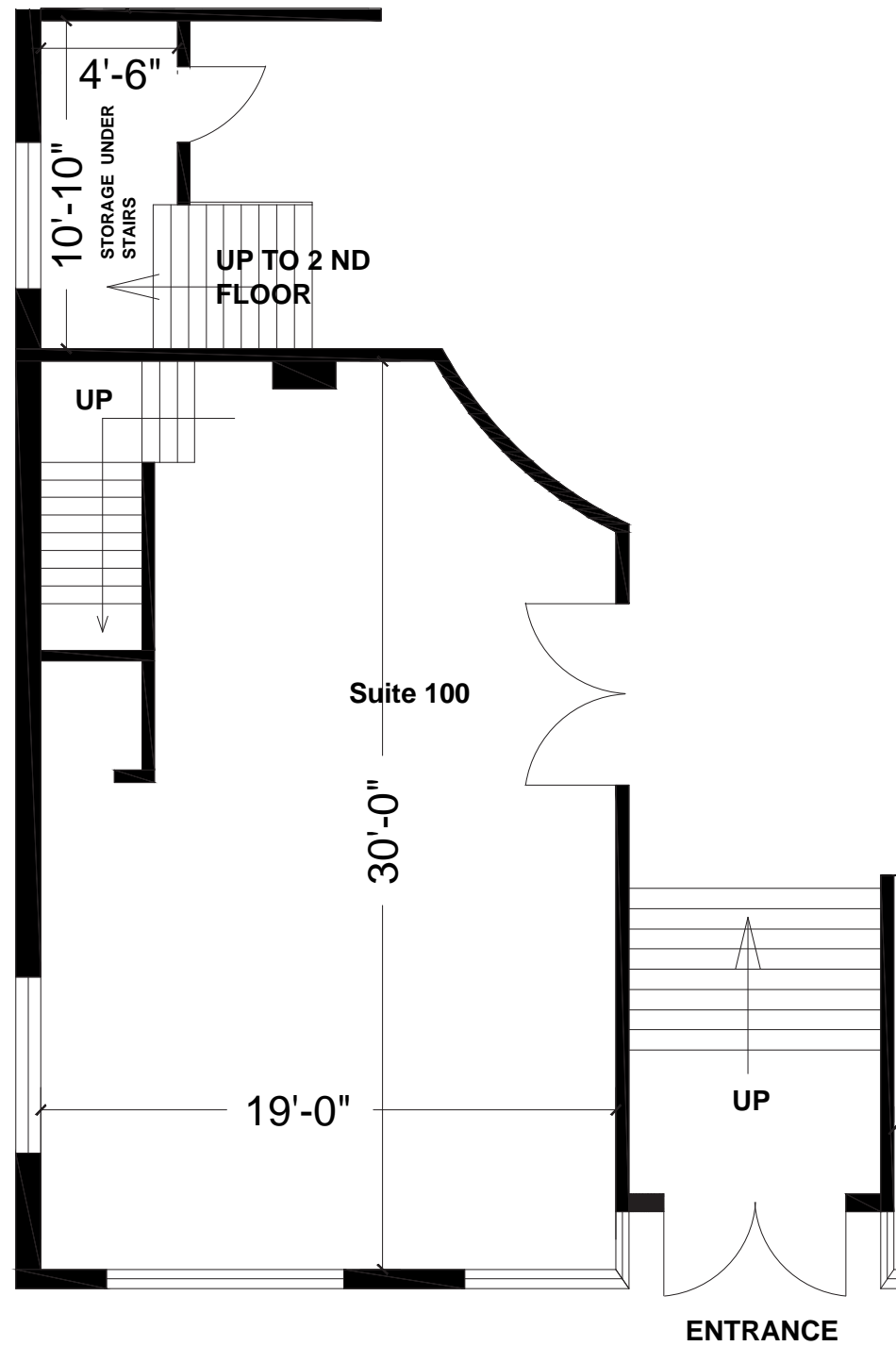
\$2.00 PSF/annum



# TOTAL CONTIGUOUS FIRST FLOOR | SECOND FLOOR | THIRD FLOOR

697 SF

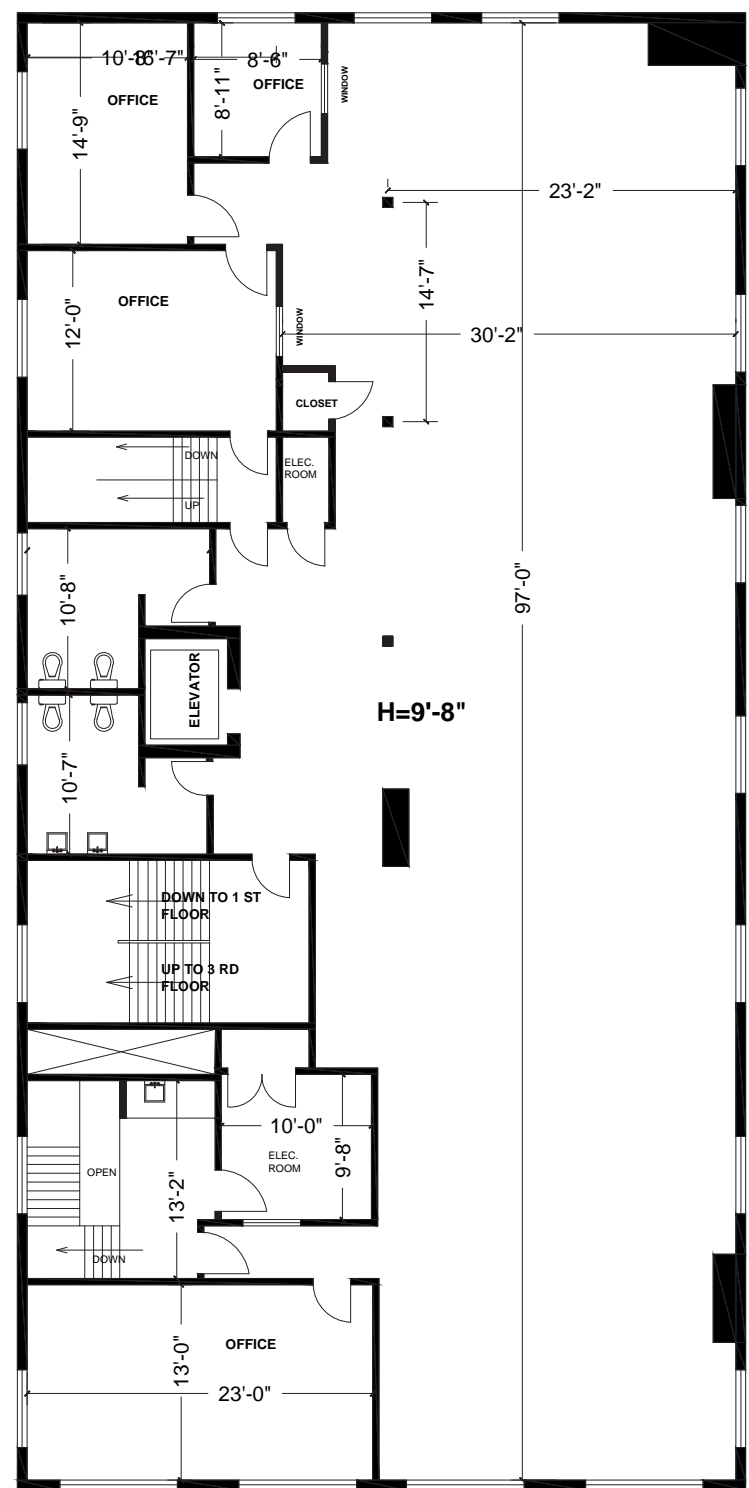
Contiguous to 10,075 SF



# TOTAL CONTIGUOUS FIRST FLOOR | SECOND FLOOR | THIRD FLOOR

4,587 SF

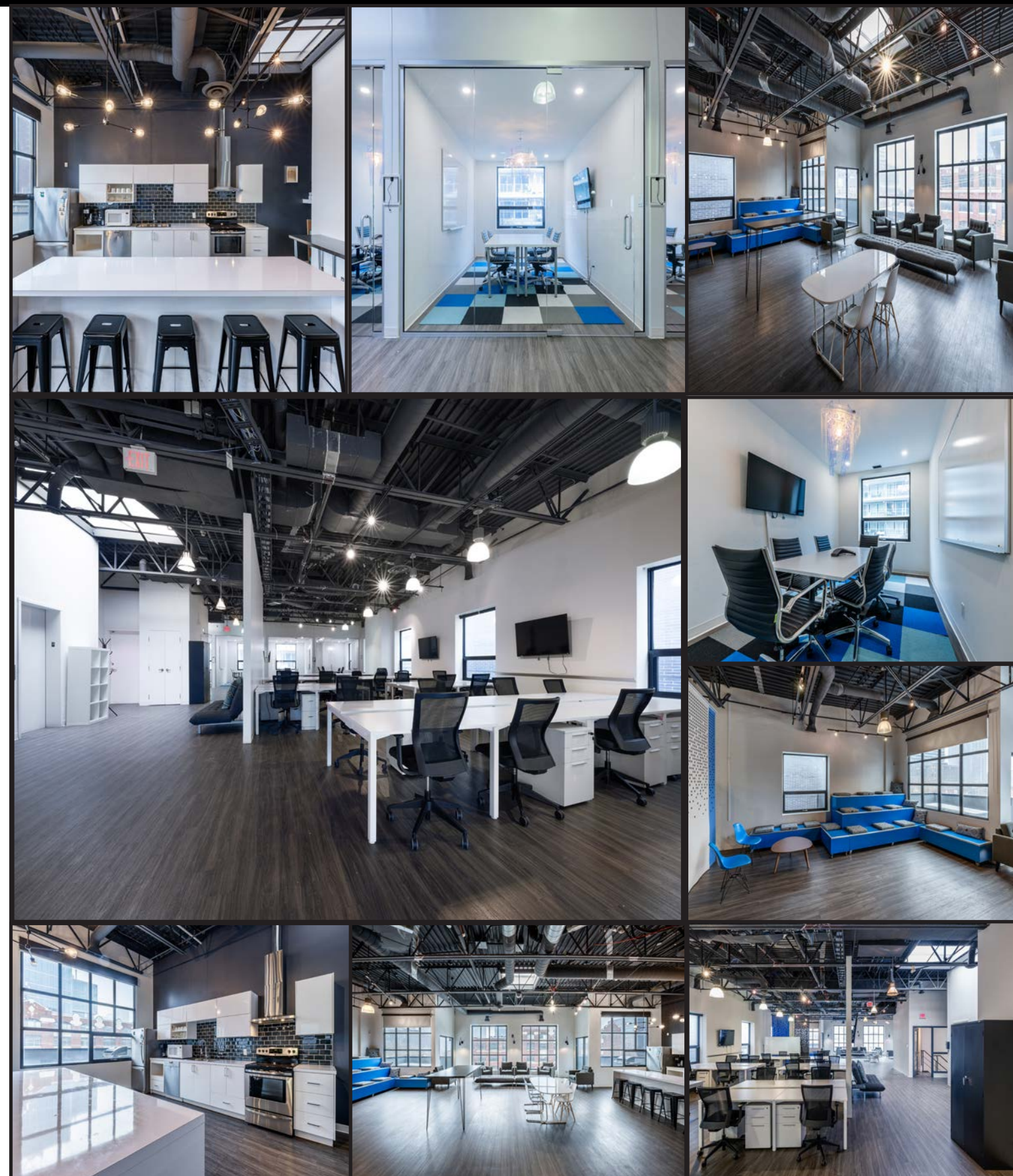
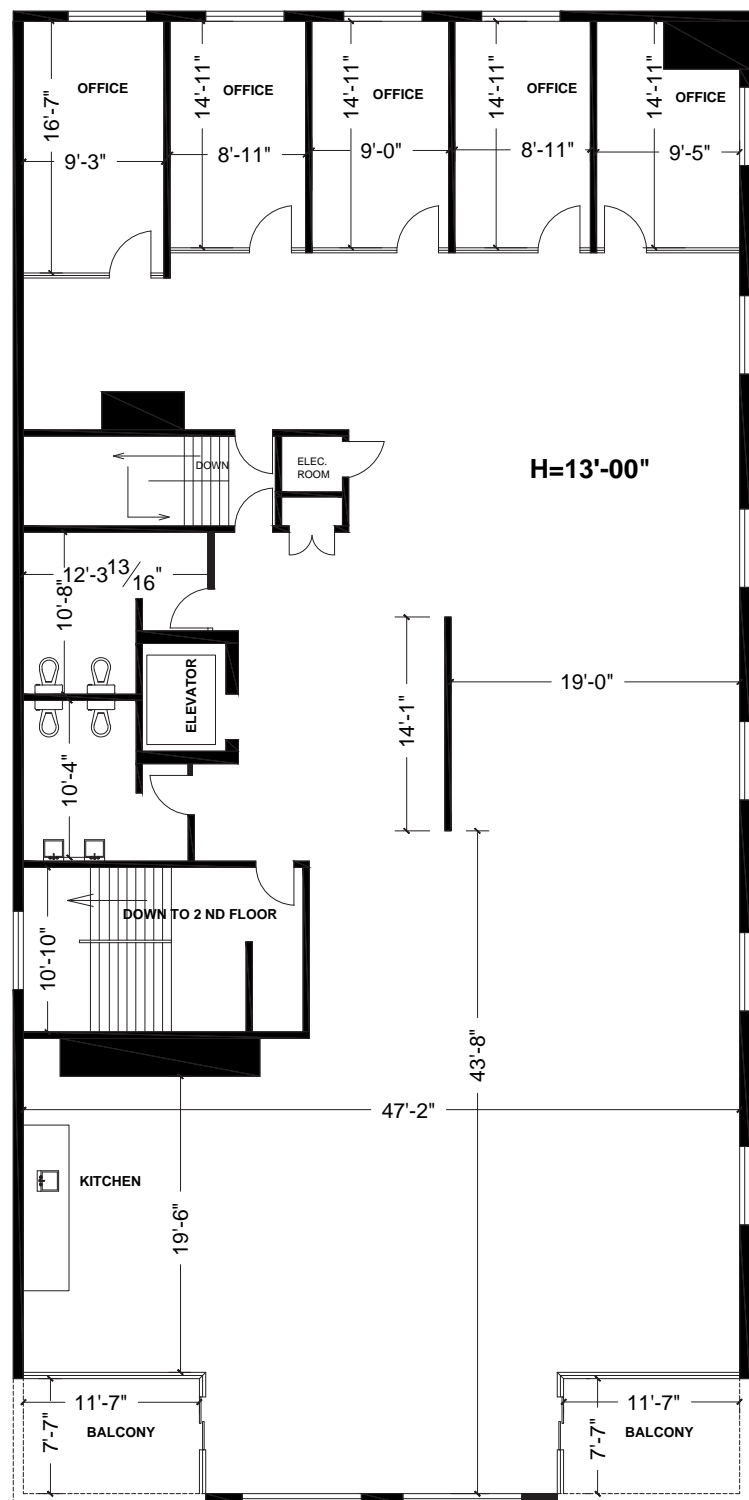
Contiguous to 10,075 SF



# TOTAL CONTIGUOUS FIRST FLOOR | SECOND FLOOR | THIRD FLOOR

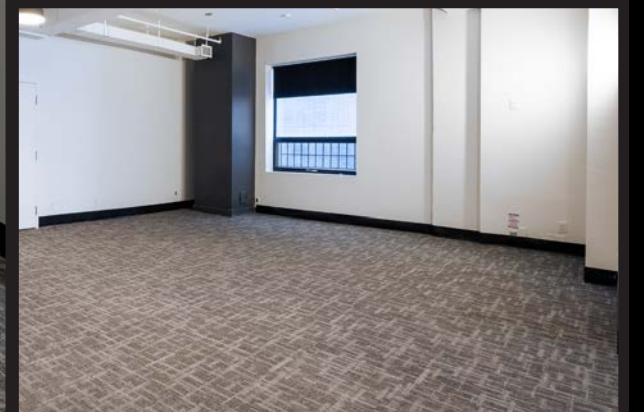
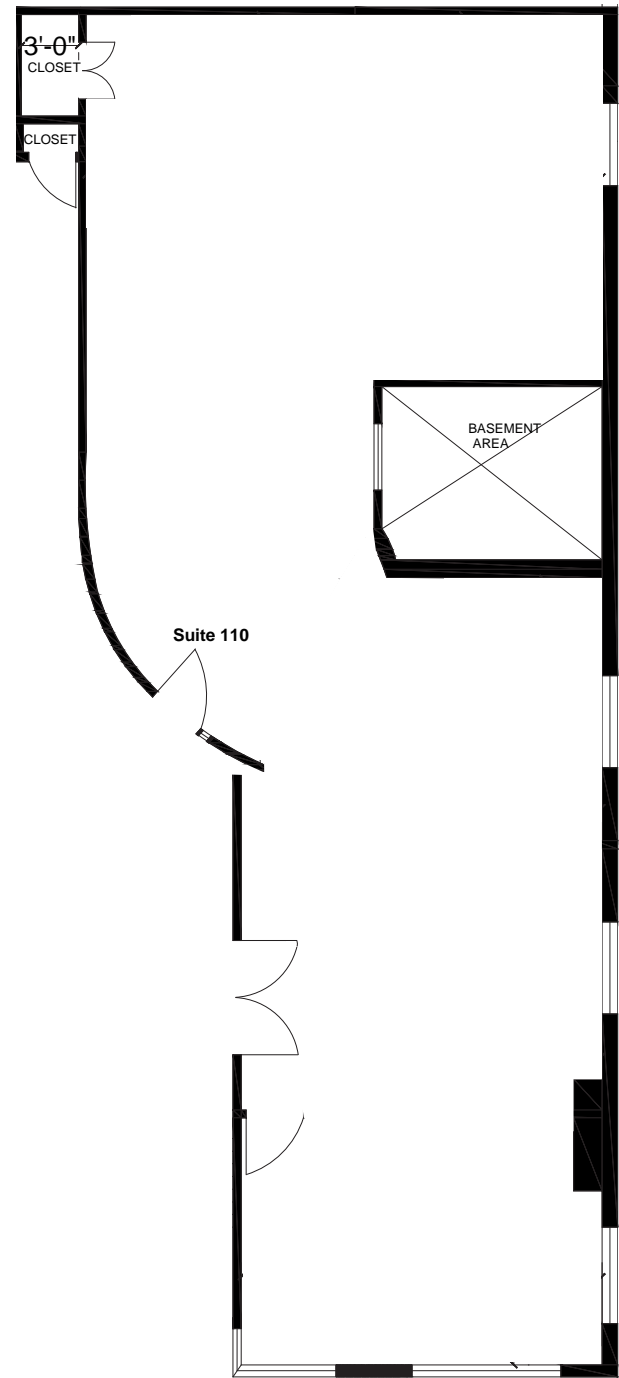
4,791 SF

Contiguous to 10,075 SF



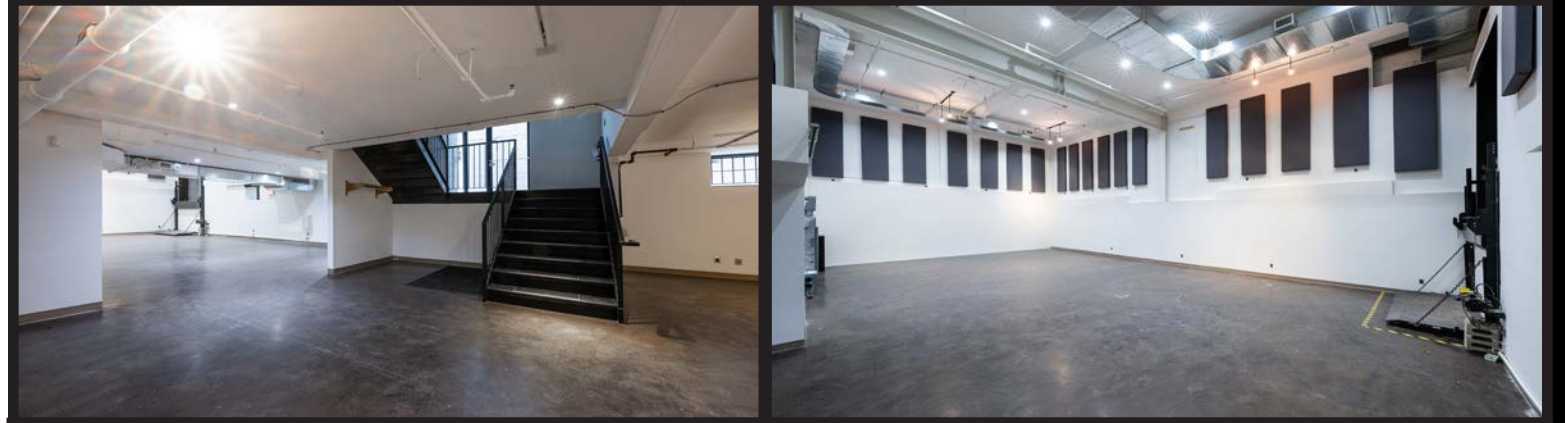
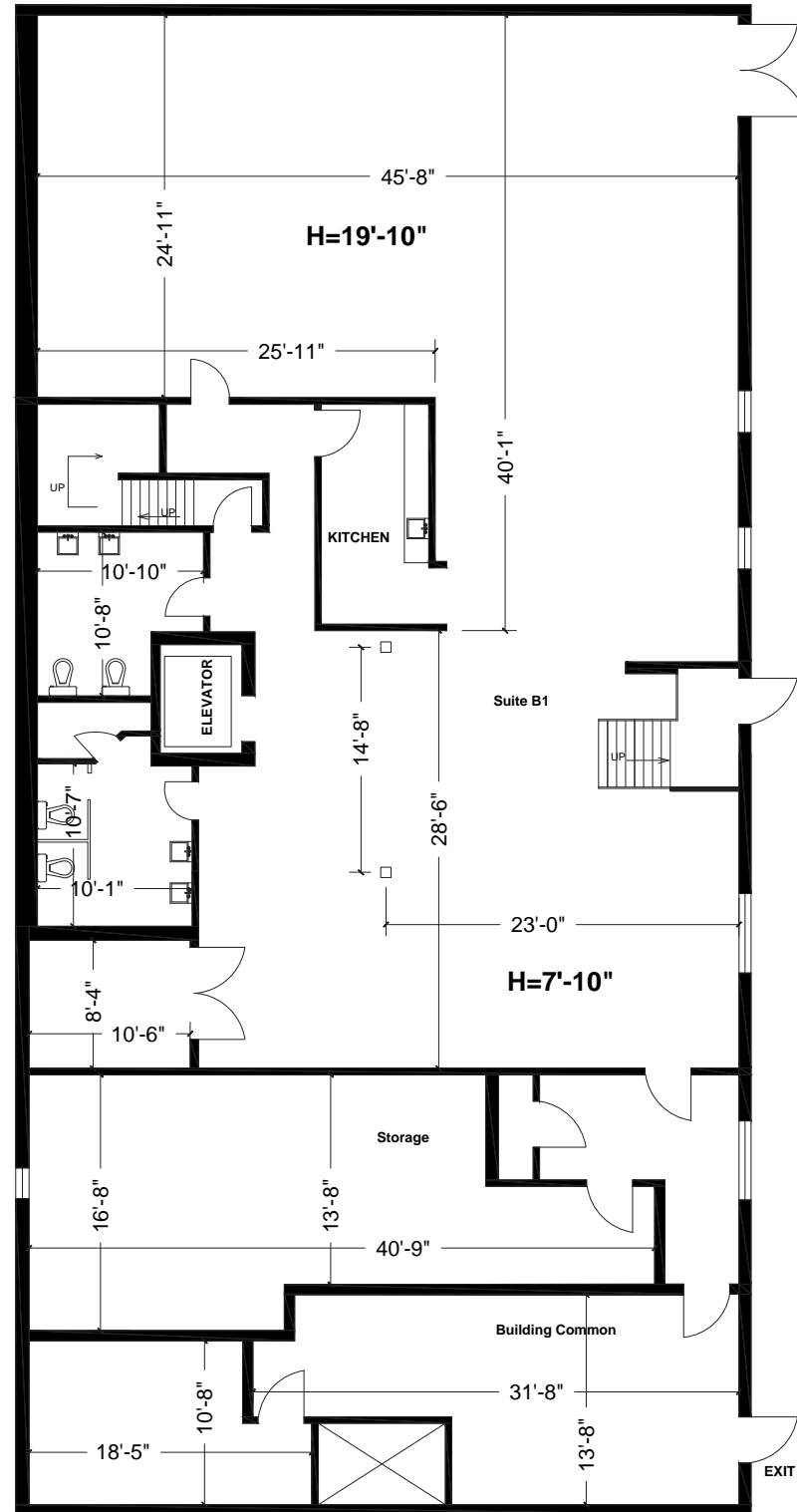
# SUITE 110

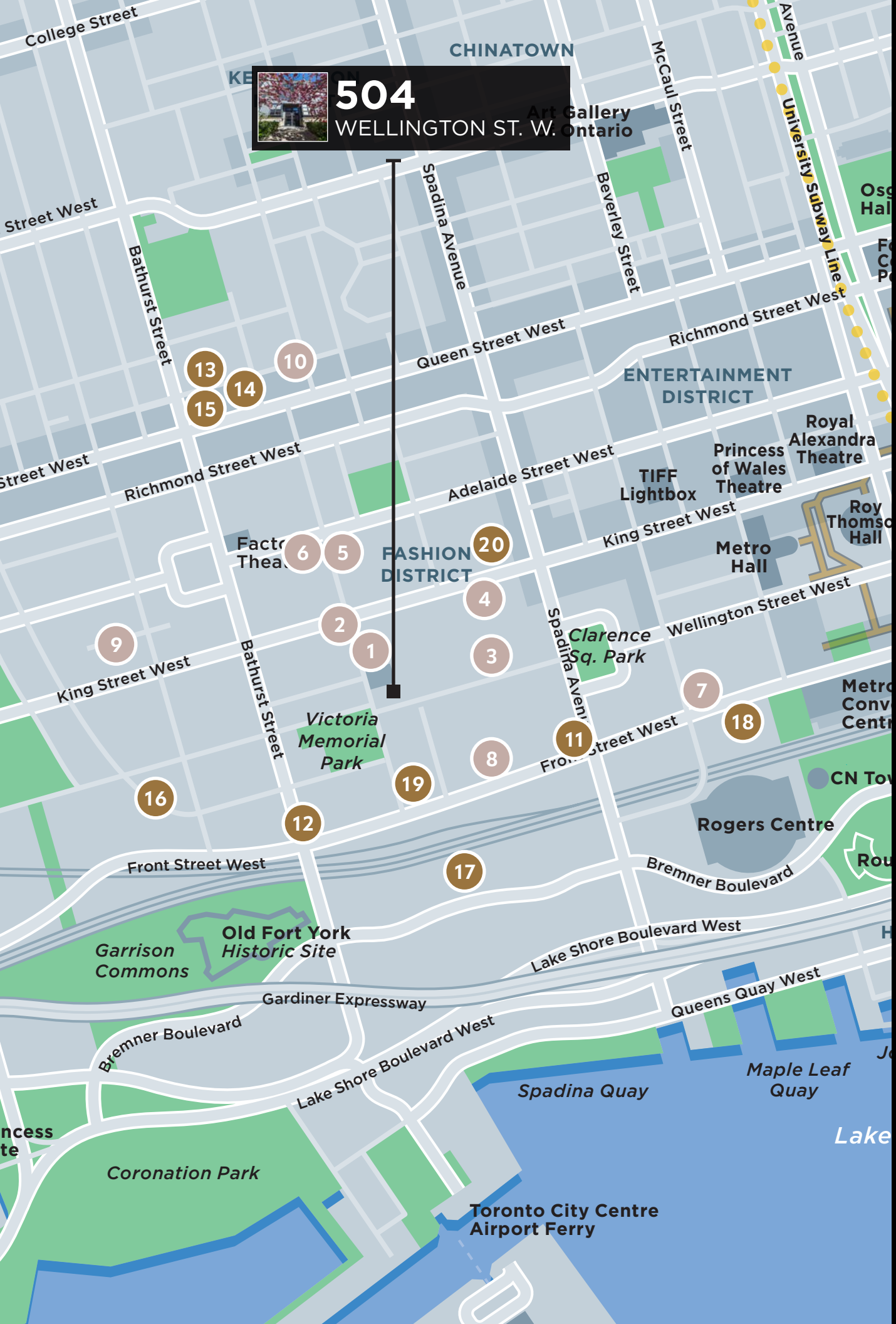
1,921 SF



# BASEMENT

3,433 SF

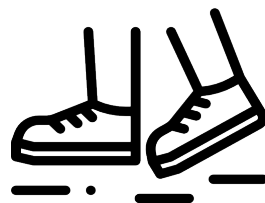




**504**

WELLINGTON ST. W. Ontario

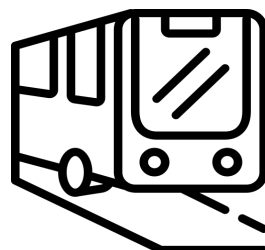
COMMUTE TO DOWNTOWN TORONTO



30 MIN WALK



10 MIN DRIVE



20 MIN BUS



10 MIN BIKE

# NEARBY AMENITIES

## LEGEND

**DINING & CAFE**

**SHOPPING**

- |                          |                        |
|--------------------------|------------------------|
| 1 Chica                  | 11 The Well            |
| 2 Ruby Soho              | 12 STACKT Market       |
| 3 Queen Street Warehouse | 13 LCBO                |
| 4 Rodney's Oyster House  | 14 Area Rug Shop       |
| 5 Gusto 101              | 15 Loblaws Queen       |
| 6 Chubby's Jamaican      | 16 Codes Pro-Media Ltd |
| 7 Siempre Breakfast      | 17 CAFE Dispensary     |
| 8 Prince Street Pizza    | 18 Rabba Fine Foods    |
| 9 Shy Coffee Co.         | 19 Sherwin-Williams    |
| 10 Bar Chef              | 20 Patagonia           |

## HIGHLIGHTS

- Flagship full building opportunity with building signage
- Fully furnished full floors
- Private parking available
- Outdoor balcony space
- Located directly across from Toronto's newest mixed-use development, The Well
- Countless shops and restaurants within walking distance



# 504

## WELLINGTON ST. W.

FOR MORE INFORMATION, PLEASE CONTACT:

**ALAN RAWN\***

Senior Vice President

+1 416 359 2440

[alan.rawn@cushwake.com](mailto:alan.rawn@cushwake.com)

**LAUREN LUCHINI\***

Associate Vice President

+1 416 455 5824

[lauren.luchini@cushwake.com](mailto:lauren.luchini@cushwake.com)

**BRENDAN SHEA\***

Associate

+1 905 501 6426

[brendan.shea@cushwake.com](mailto:brendan.shea@cushwake.com)



Cushman & Wakefield ULC, Brokerage | 161 Bay Street, Suite 1500 | Toronto ON M5J 2S1 | [cushmanwakefield.ca](http://cushmanwakefield.ca)

©2024 Cushman & Wakefield ULC, Brokerage. All rights reserved. The information contained in this communication is strictly confidential. This information has been obtained from sources believed to be reliable but has not been verified. NO WARRANTY OR REPRESENTATION, EXPRESS OR IMPLIED, IS MADE AS TO THE CONDITION OF THE PROPERTY (OR PROPERTIES) REFERENCED HEREIN OR AS TO THE ACCURACY OR COMPLETENESS OF THE INFORMATION CONTAINED HEREIN, AND SAME IS SUBMITTED SUBJECT TO ERRORS, OMISSIONS, CHANGE OF PRICE, RENTAL OR OTHER CONDITIONS, WITHDRAWAL WITHOUT NOTICE, AND TO ANY SPECIAL LISTING CONDITIONS IMPOSED BY THE PROPERTY OWNER(S). ANY PROJECTIONS, OPINIONS OR ESTIMATES ARE SUBJECT TO UNCERTAINTY AND DO NOT SIGNIFY CURRENT OR FUTURE PROPERTY PERFORMANCE. \*SALES REPRESENTATIVE