



## DEVELOPMENT OPPORTUNITY IN ALDERGROVE

**FOR SALE**

**2827 273<sup>RD</sup> STREET**  
Aldergrove, BC



**CUSHMAN &  
WAKEFIELD**

**JORDAN SENGARA**  
Personal Real Estate Corporation  
Vice President  
604 640 5845  
jordan.sengara@cushwake.com

**MICHAEL HARDY**  
Personal Real Estate Corporation  
Associate Vice President  
604 608 5912  
michael.hardy@cushwake.com

**LIAM BOULTBEE**  
Senior Associate  
604 640 5845  
liam.boultee@cushwake.com

Suite 700 - 700 West Georgia Street  
PO Box 10023, Pacific Centre  
Vancouver, BC V7Y 1A1  
604 683 3111 / [cushmanwakefield.ca](http://cushmanwakefield.ca)

# FOR SALE

## 2827 273<sup>RD</sup> STREET Aldergrove, BC



### THE OPPORTUNITY

Cushman & Wakefield ULC is pleased to present this opportunity to purchase from 1.3 - 2+ Acre single family home development site. The development is to be demised from the Sts. Joachim and Ann Roman Catholic Parish site.

### THE DEVELOPMENT PROPOSAL

The Township of Langley has performed a preliminary review of the shown 16-lot development proposal. The Seller will consider alternative plans and site configuration. Please contact the Listing Agents for further information on the development proposal and other ideas.

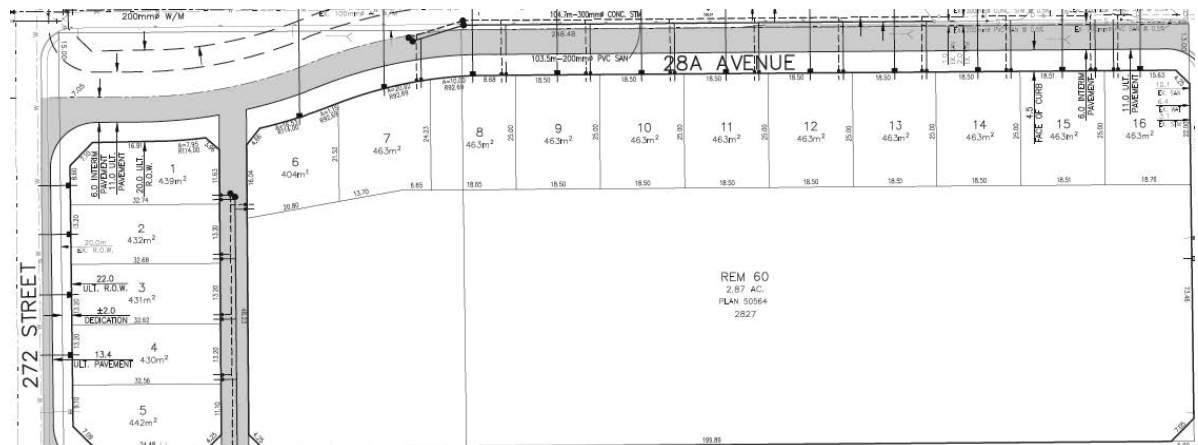
### SALIENT DETAILS

Civic Address	2827 273 Street, Aldergrove, BC
PID	004-115-813
Legal Description	LOT 60 SECTION 20 TOWNSHIP 13 NEW WESTMINSTER DISTRICT PLAN 50564
Area	1.3 - 2+ Acres (depending on finalized subdivision plan)
Current Zoning	Civic Institutional Zone P-1
Asking Price	Contact listing agents

### PARENT SITE



### PROPOSED DEVELOPMENT PLAN



**JORDAN SENGARA**  
Personal Real Estate Corporation  
Vice President  
604 640 5845  
jordan.sengara@cushwake.com

**MICHAEL HARDY**  
Personal Real Estate Corporation  
Associate Vice President  
604 608 5912  
michael.hardy@cushwake.com

**LIAM BOULTBEE**  
Senior Associate  
604 640 5845  
liam.boulton@cushwake.com

E.&O.E.: This communication is not intended to cause or induce breach of an existing agency agreement. The information contained herein was obtained from sources which we deem reliable and, while thought to be correct, is not guaranteed by Cushman & Wakefield ULC PRJ0681916 (02/23/bg)