



9,228 SF AVAILABLE
25th Floor

10 S WACKER

CHICAGO, IL

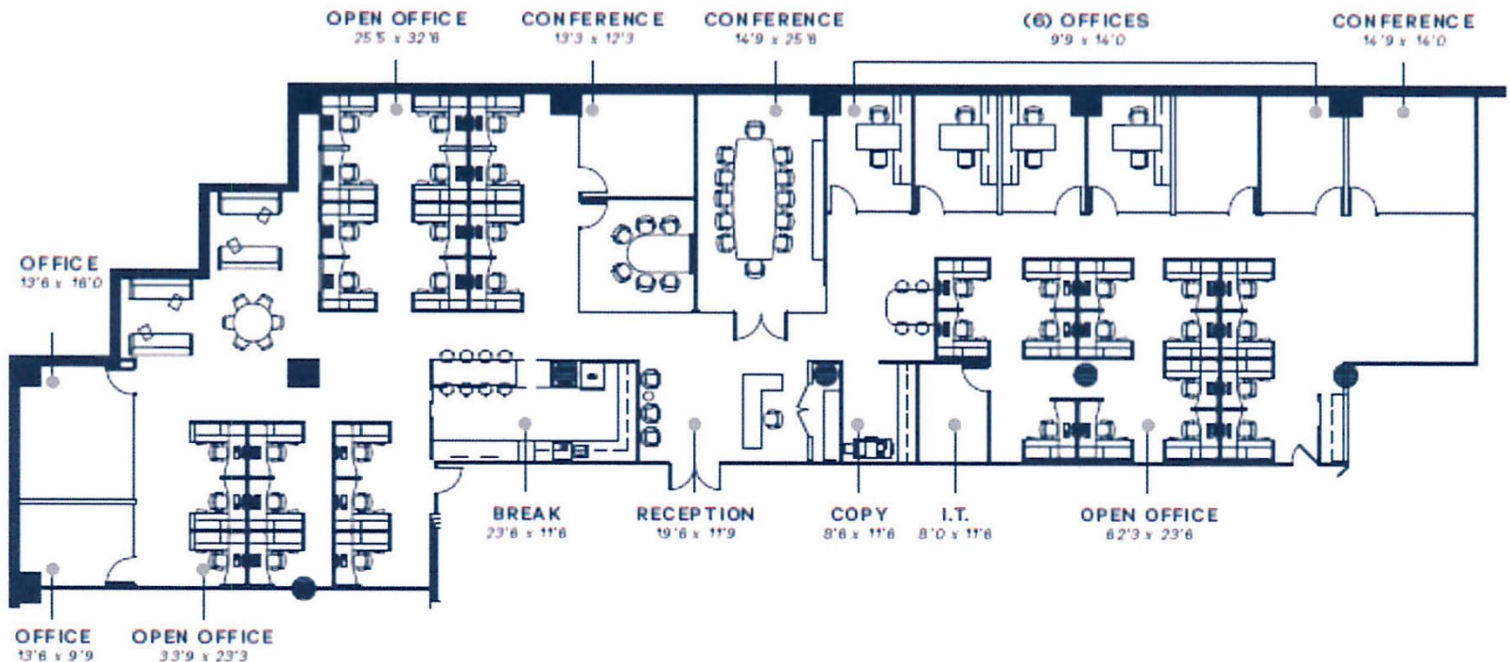
SPACE HIGHLIGHTS

- Available: Immediately (no sooner than July 1, 2024)
- Term Through: December 2028
- Size: 9,228 SF on the 25th Floor
- Asking Rate: Negotiable
- Plug-and-Play Condition with Furniture Including:
 - 8 Exterior Private Offices
 - 4 Conference Rooms
 - 37 Workstations
 - Large Open Kitchen

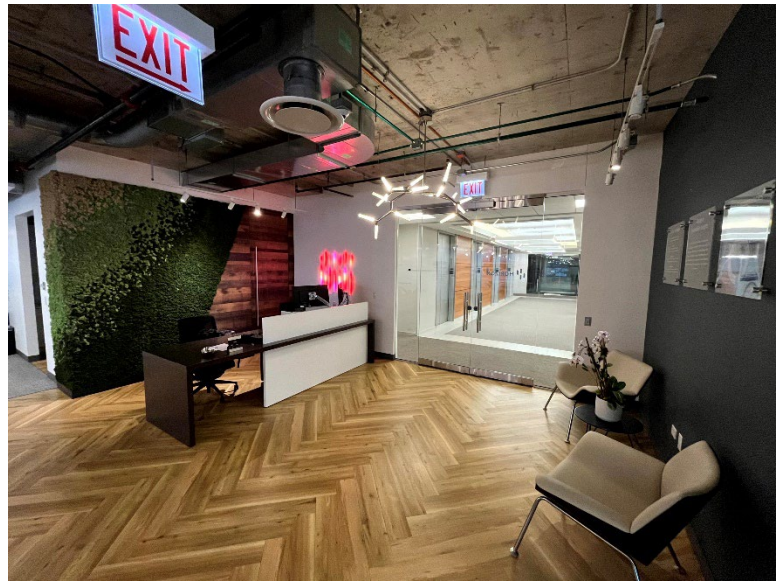
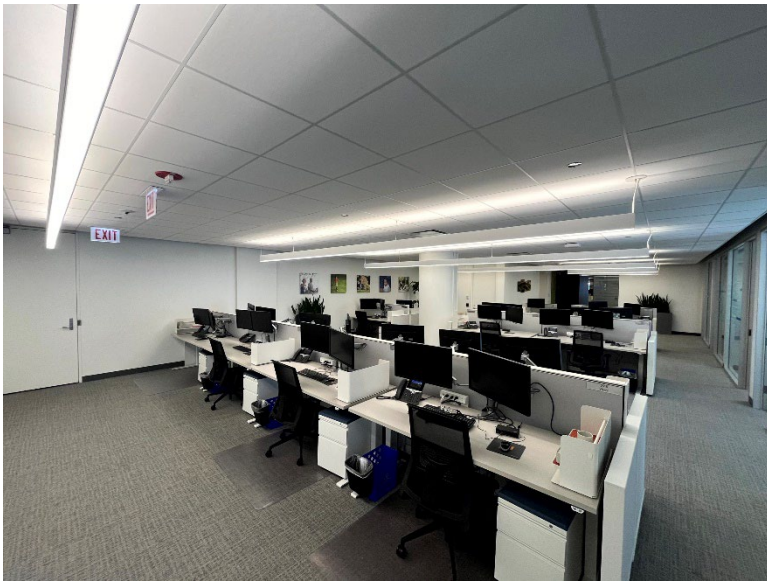
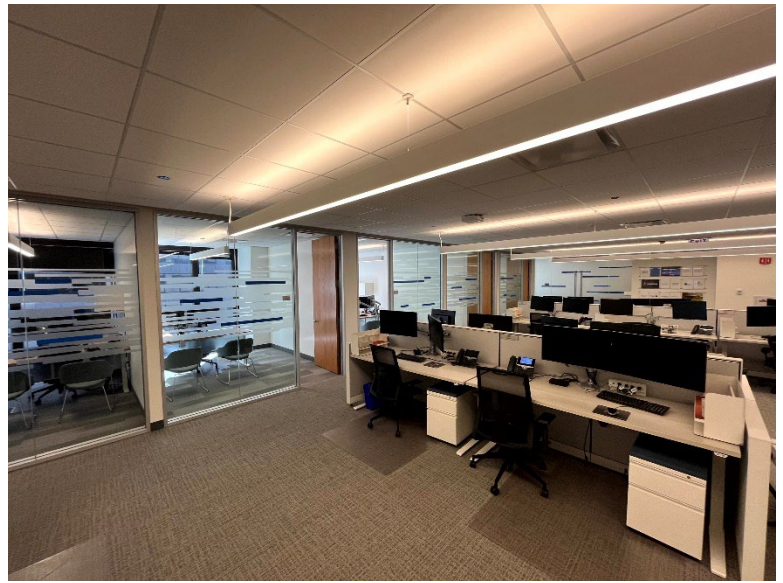
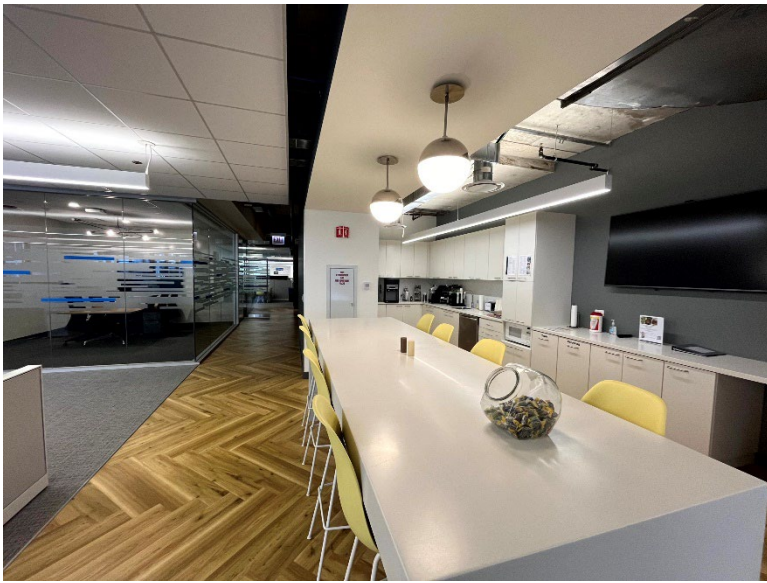
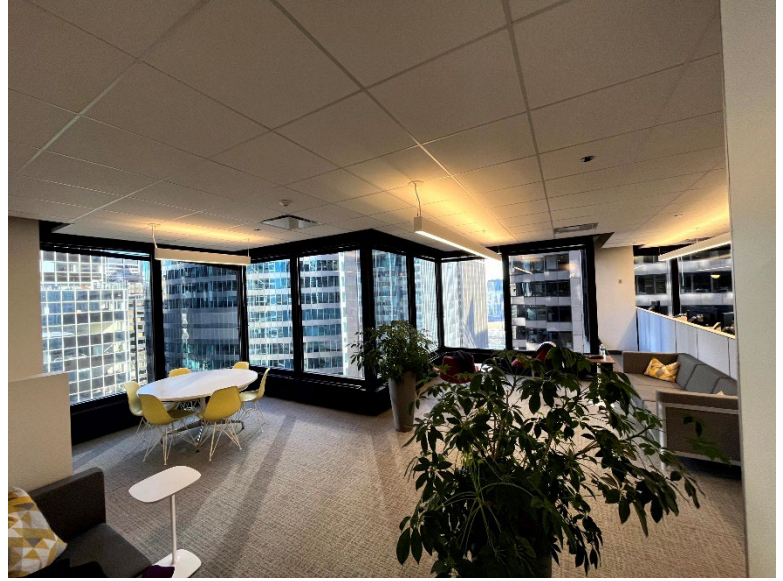
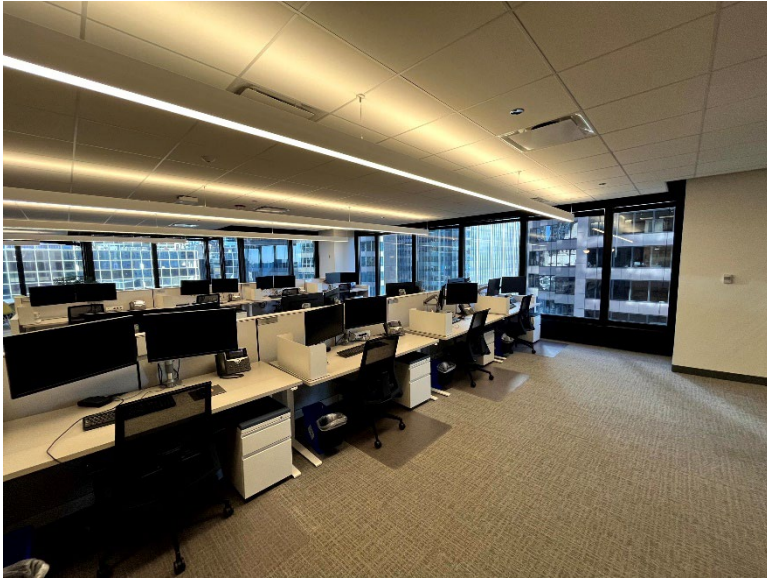
BUILDING HIGHLIGHTS

- Excellent Proximity to Public Transportation
- Set-Backs, High-Rise Allow for Great Natural Light
- Tenant Lounge and Clubhouse
- Conference Center
- Fitness Center
- White Tablecloth Restaurant
- Casual Dining Options
- Chase Bank Branch
- 500 Car Parking Garage

FLOOR PLAN



PHOTOS



PHOTOS



©2020 Cushman & Wakefield. All rights reserved. The information contained in this report is strictly confidential. This information has been obtained from sources believed to be reliable but has not been verified. NO WARRANTY OF REPRESENTATION, EXPRESSION OR OPINION IS MADE AS TO THE CONDITION OF THE PROPERTY (OR PROPERTIES) REFERENCED HEREIN OR AS TO THE ACCURACY OR COMPLETENESS OF THE INFORMATION CONTAINED HEREIN, AND SAME IS SUBMITTED SUBJECT TO ERRORS, OMISSIONS, CHANGE OF PRICE, RENTAL OR LEASE CONDITIONS, WITHDRAWAL WITHOUT NOTICE, AND TO ANY SPECIAL LISTING CONDITIONS IMPOSED BY THE PROPERTY OWNER(S). ANY PROJECTIONS, OPINIONS OR ESTIMATES ARE SUBJECT TO UNCERTAINTY AND DO NOT SIGNIFY CURRENT OR FUTURE PROPERTY PERFORMANCE.

Jeffrey Skender
+1 312 470 2325
jeffrey.skender@cushwake.com

Jonathan Metzl
+1 312 871 5016
jonathan.metzl@cushwake.com

