



+/- 7,000 SF FOR LEASE

2210 WEST TAYLOR STREET
CHICAGO, ILLINOIS



2210 WEST TAYLOR STREET

CHICAGO, ILLINOIS

Property Features

+/- 7,000 SF – 2nd Floor

12-14' Clear Height

6-8 Car Parking

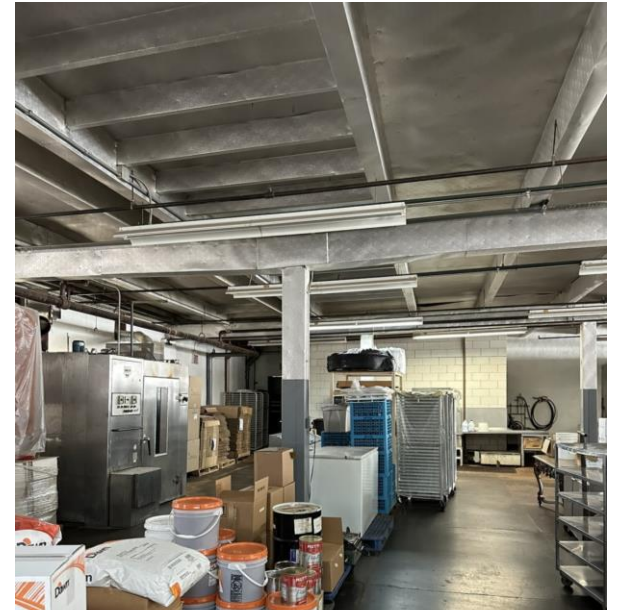
3-Phase Electrical Power

Freight Elevator

Close to Downtown and I290/I94

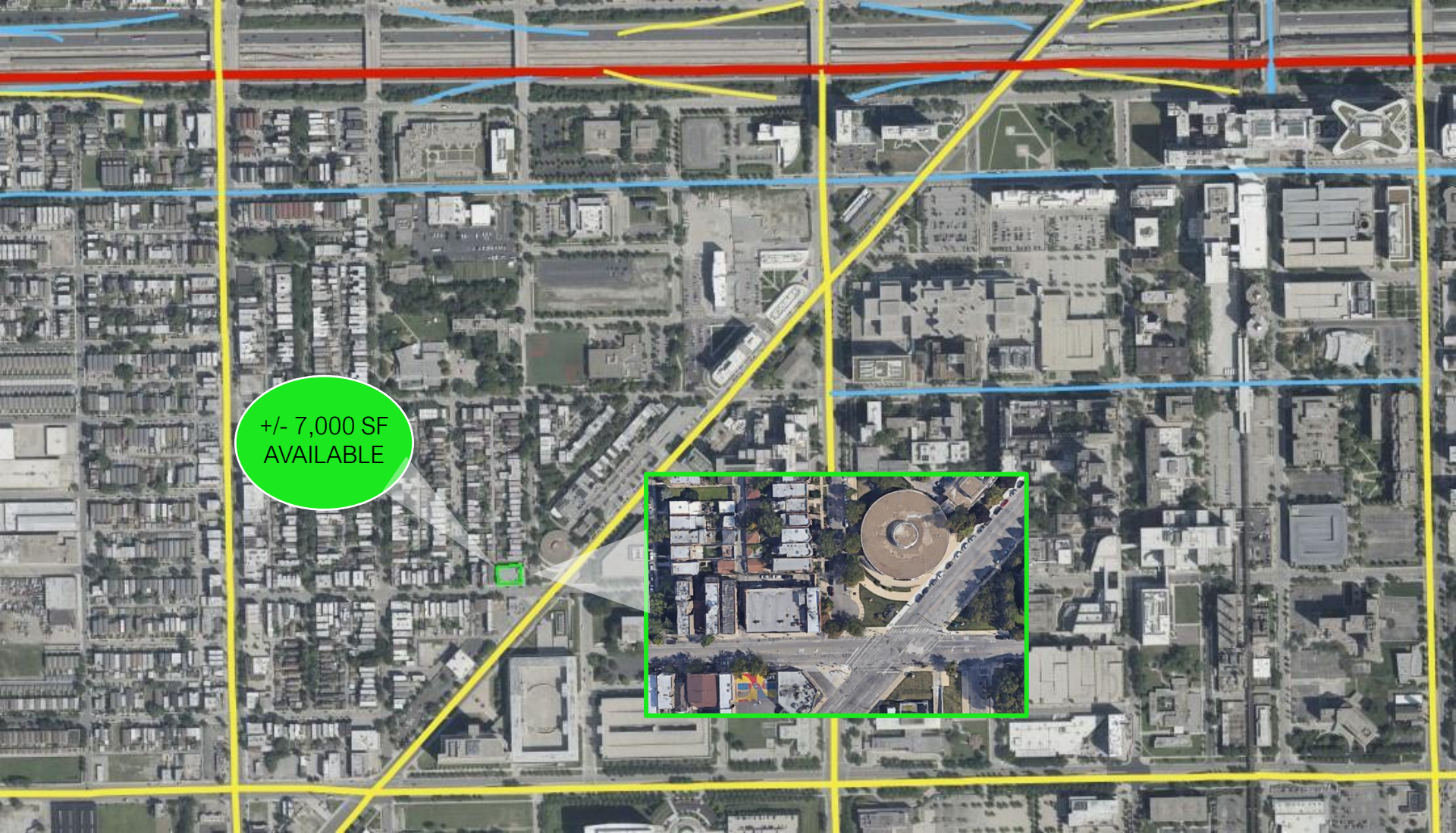
Great Overflow or Dead Storage Space

Lease Rate: Subject to Offer



2210 WEST TAYLOR STREET

CHICAGO, ILLINOIS



+/- 7,000 SF
AVAILABLE



FOR MORE INFORMATION, CONTACT:

DAVID FRIEDLAND

Executive Managing Director

630.841.2001

david.friedland@cushwake.com

GABRIEL STRAUSS

Associate Broker

847.668.8833

gabriel.strauss@cushwake.com

©2024 Cushman & Wakefield. All rights reserved. The information contained in this communication is strictly confidential. This information has been obtained from sources believed to be reliable but has not been verified. NO WARRANTY OR REPRESENTATION, EXPRESS OR IMPLIED, IS MADE AS TO THE CONDITION OF THE PROPERTY (OR PROPERTIES) REFERENCED HEREIN OR AS TO THE ACCURACY OR COMPLETENESS OF THE INFORMATION CONTAINED HEREIN, AND SAME IS SUBMITTED SUBJECT TO ERRORS, OMISSIONS, CHANGE OF PRICE, RENTAL OR OTHER CONDITIONS, WITHDRAWAL WITHOUT NOTICE, AND TO ANY SPECIAL LISTING CONDITIONS IMPOSED BY THE PROPERTY OWNER(S). ANY PROJECTIONS, OPINIONS OR ESTIMATES ARE SUBJECT TO UNCERTAINTY AND DO NOT SIGNIFY CURRENT OR FUTURE PROPERTY PERFORMANCE.

