



FOR LEASE

Laurel Building

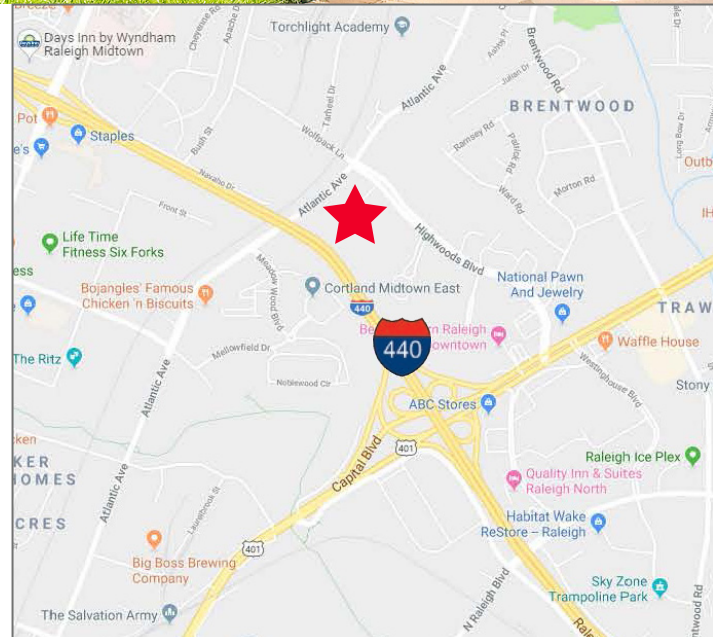
3100 Highwoods Blvd., Raleigh, NC 27604



11,294 RSF Office Space Available

Property Highlights

- 39,561 SF single story office building in the desirable Highwoods Office Park
- Space can be subdivided to 5,232 SF and 4,244 SF
- Generous parking ratio of 4.3 spaces per 1,000 SF leased
- Proximity to multiple amenities with easy access to Capital Boulevard and I-440
- Asking \$23.00/SF Full Service

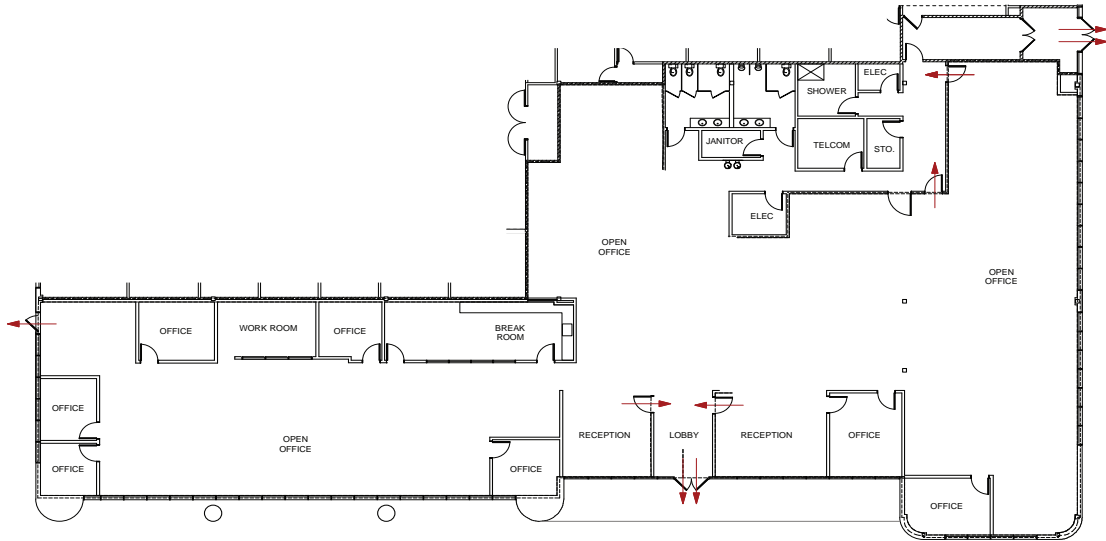


Doug Cook
Senior Director
+1 919 439 5158
doug.cook@cushwake.com

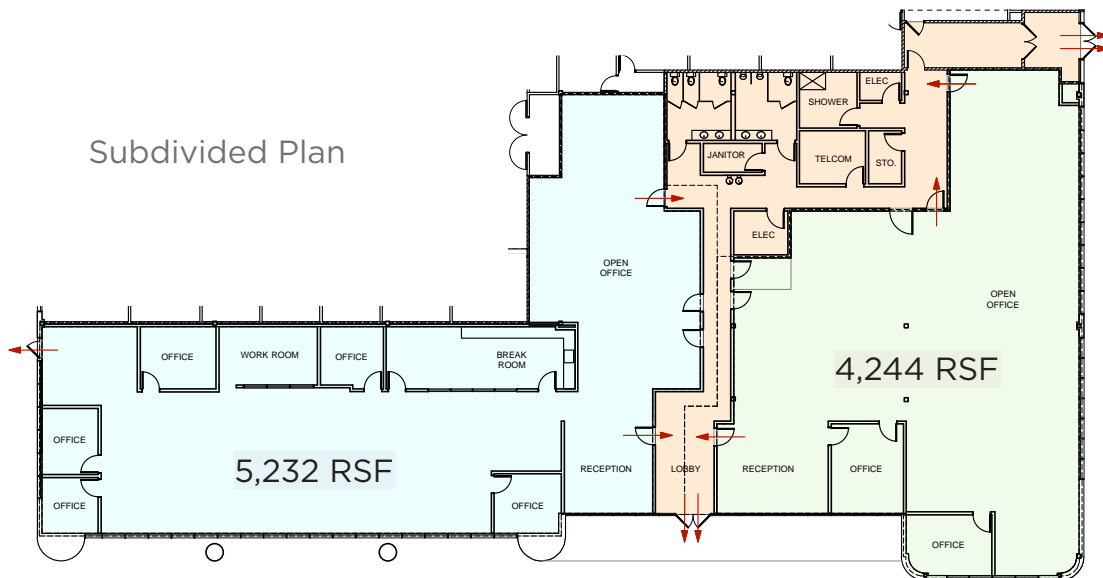
Stacy Mbithi
Director
+1 919 645 3598
stacy.mbithi@cushwake.com

3015 Carrington Mill Blvd., Suite 410
Morrisville, NC 27560
Main +1 919 789 4255
Fax +1 919 789 0268
cushmanwakefield.com

11,294 RSF Available



Subdivided Plan



Doug Cook
Senior Director
+1 919 439 5158
doug.cook@cushwake.com

Stacy Mbithi
Director
+1 919 645 3598
stacy.mbithi@cushwake.com



**CUSHMAN &
WAKEFIELD**

FOR LEASE

Laurel Building

3100 Highwoods Blvd., Raleigh, NC 27604



VIRTUAL TOUR



TEST FIT SPECS



3D FLYTHROUGH



Doug Cook
Senior Director
+1 919 439 5158
doug.cook@cushwake.com

Stacy Mbithi
Director
+1 919 645 3598
stacy.mbithi@cushwake.com

©2022 Cushman & Wakefield. All rights reserved. The information contained in this communication is strictly confidential. This information has been obtained from sources believed to be reliable but has not been verified. NO WARRANTY OR REPRESENTATION, EXPRESS OR IMPLIED, IS MADE AS TO THE CONDITION OF THE PROPERTY (OR PROPERTIES) REFERENCED HEREIN OR AS TO THE ACCURACY OR COMPLETENESS OF THE INFORMATION CONTAINED HEREIN, AND SAME IS SUBMITTED SUBJECT TO ERRORS, OMISSIONS, CHANGE OF PRICE, RENTAL OR OTHER CONDITIONS, WITHDRAWAL WITHOUT NOTICE, AND TO ANY SPECIAL LISTING CONDITIONS IMPOSED BY THE PROPERTY OWNER(S). ANY PROJECTIONS, OPINIONS OR ESTIMATES ARE SUBJECT TO UNCERTAINTY AND DO NOT SIGNIFY CURRENT OR FUTURE PROPERTY PERFORMANCE.



**CUSHMAN &
WAKEFIELD**

FOR LEASE

Laurel Building

3100 Highwoods Blvd., Raleigh, NC 27604



Doug Cook
Senior Director
+1 919 439 5158
doug.cook@cushwake.com

Stacy Mbithi
Director
+1 919 645 3598
stacy.mbithi@cushwake.com

Aerial / Location Map



Drive Times:

- North Hills - **5** minutes
- Downtown Raleigh - **9** minutes
- RDU International Airport - **20** minutes

Doug Cook
Senior Director
+1 919 439 5158
doug.cook@cushwake.com

Stacy Mbithi
Director
+1 919 645 3598
stacy.mbithi@cushwake.com

3015 Carrington Mill Blvd., Suite 410
Morrisville, NC 27560
Main +1 919 789 4255
Fax +1 919 789 0268
cushmanwakefield.com