

79,813-158,353 SF

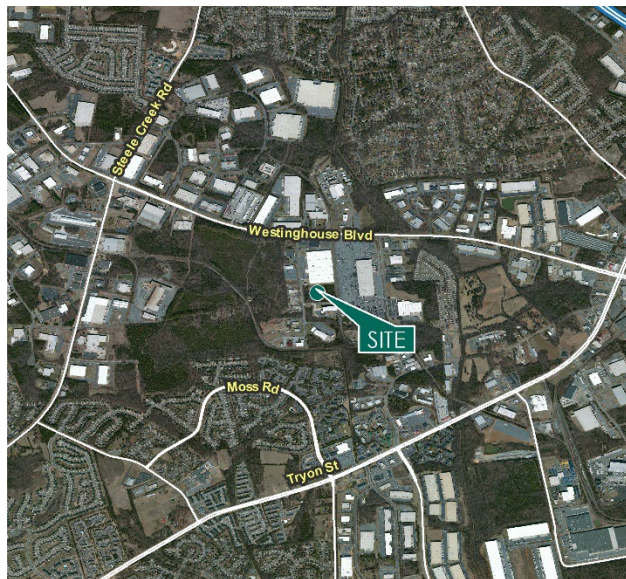
Industrial Space For Lease



Prologis Southwest Charlotte Logistics Center



11710 Goodrich Drive
Charlotte, NC 28273 USA



LOCATION

- In the Southwest submarket- Charlotte's largest industrial submarket
- 10 miles to Charlotte Douglas International Airport
- 5 miles to I-485 and I-77

FACILITY

- Up to 158,353 SF build to suit available
- 36' clear
- 135' truck court
- 93 car parking spaces
- 60' wide x 56' deep column spacing with a 60' staging bay
- 29 dock doors
- 2- drive-in ramps (12' X 14')
- Rear-load facility
- LED warehouse lighting
- Office built to suit customer needs
- Zoned I-2

ADVANTAGES AND AMENITIES

- Prologis Clear Lease-a simplified lease that fixes operating and capital expenses for the entire lease term
- Efficient and cost effective warehouse solutions through Prologis Essentials

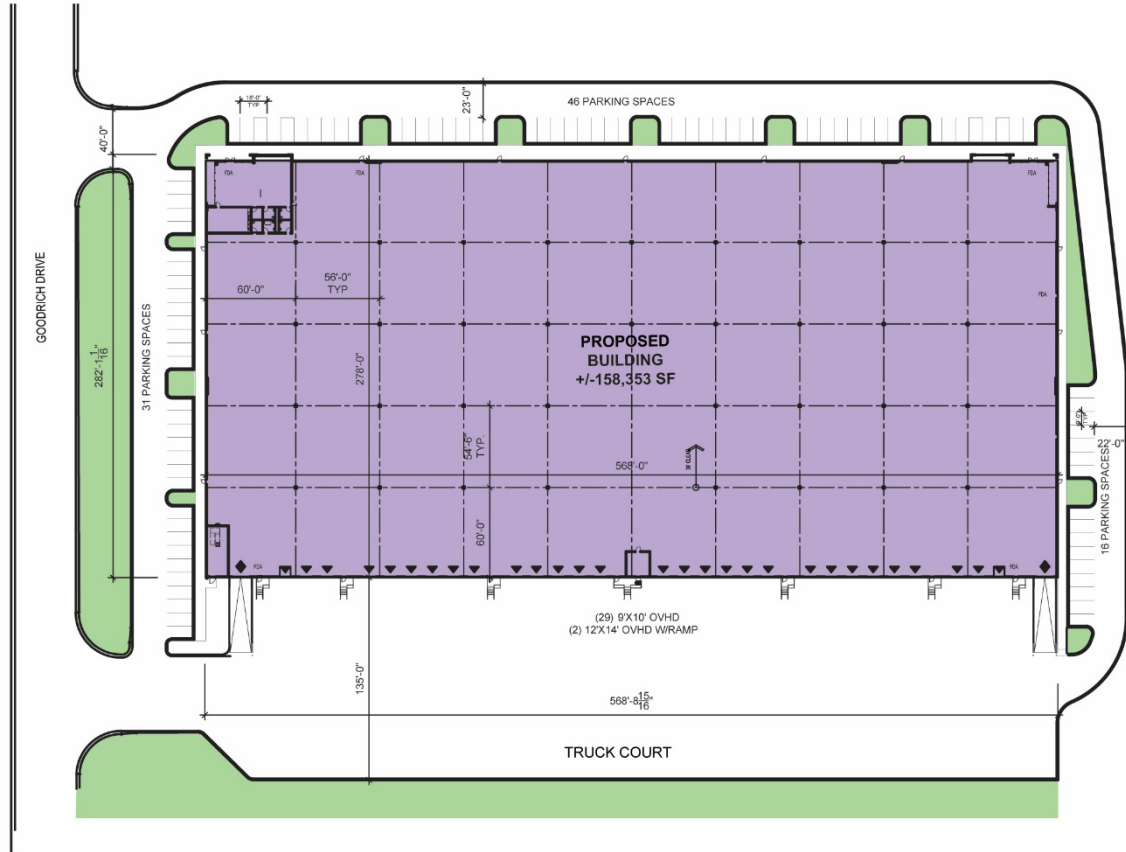
Prologis Essentials: your single-source service for efficient move-in and operations at [prologisessentials.com](https://www.prologisessentials.com)

79,813-158,353 SF

Industrial Space For Lease



Prologis Southwest Charlotte Logistics Center



NORTH

- PLANNED
- DOCK DOOR
- DRIVE-IN DOOR



Cushman & Wakefield

Fermin Deoca
Fermin.Deoca@cushwake.com
ph +1 704 335 4436
cell +1 225 235 7899
300 S Tryon St
Suite 1110
Charlotte, NC 28202 USA

Cushman & Wakefield

Matt Treble
Matt.Treble@cushwake.com
ph +1 704 335 4430
cell +1 615 440 1939
300 S Tryon St
Suite 1110
Charlotte, NC 28202 USA

Prologis

Caitlin Ciniero
cciniero@prologis.com
ph +1 980 422 0807
cell +1 443 745 6463 1
1900 South Blvd
Suite 302
Charlotte, NC 28203 USA

Prologis

Todd Summerfield
tsummerfield@prologis.com
ph +1 704 426 8002
cell +1 410 441 1145 1900
South Blvd
Suite 302
Charlotte, NC 28203 USA

Prologis Essentials: your single-source service for efficient move-in and operations at [prologisessentials.com](https://www.prologisessentials.com)

No warranty or representation, expressed or implied, is made as to the accuracy of the information contained herein, and same is submitted subject to error and omissions.