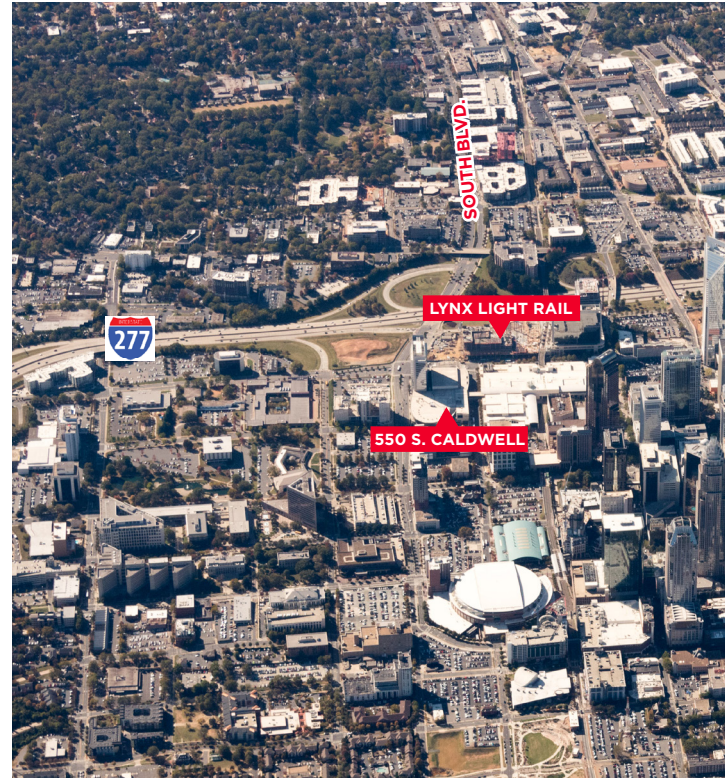


FOR SUBLEASE

550 South Caldwell St.



## Sublease Highlights

- Plug and play
- Full floors available:
  - 14th - 23,007 SF
  - 15th - 23,090 SF
  - 16th - 23,174 SF
  - 17th - 23,256 SF
- Furniture negotiable
- Sublease through June 30, 2026
- LEED Certified Silver constructed in 2009
- Easy access to Hwy I-277 belt loop and South Boulevard
- One block from the Stonewall Lynx Light Rail Station

## Contact

KEITH BELL, SIOR  
+1 704 887 3036  
keith.bell@cushwake.com

ALEXANDRA WELLS  
+1 704 620 6122  
alexandra.wells@cushwake.com

FOR SUBLEASE

550 South Caldwell St.



## Contact

KEITH BELL, SIOR  
+1 704 887 3036  
keith.bell@cushwake.com

ALEXANDRA WELLS  
+1 704 620 6122  
alexandra.wells@cushwake.com

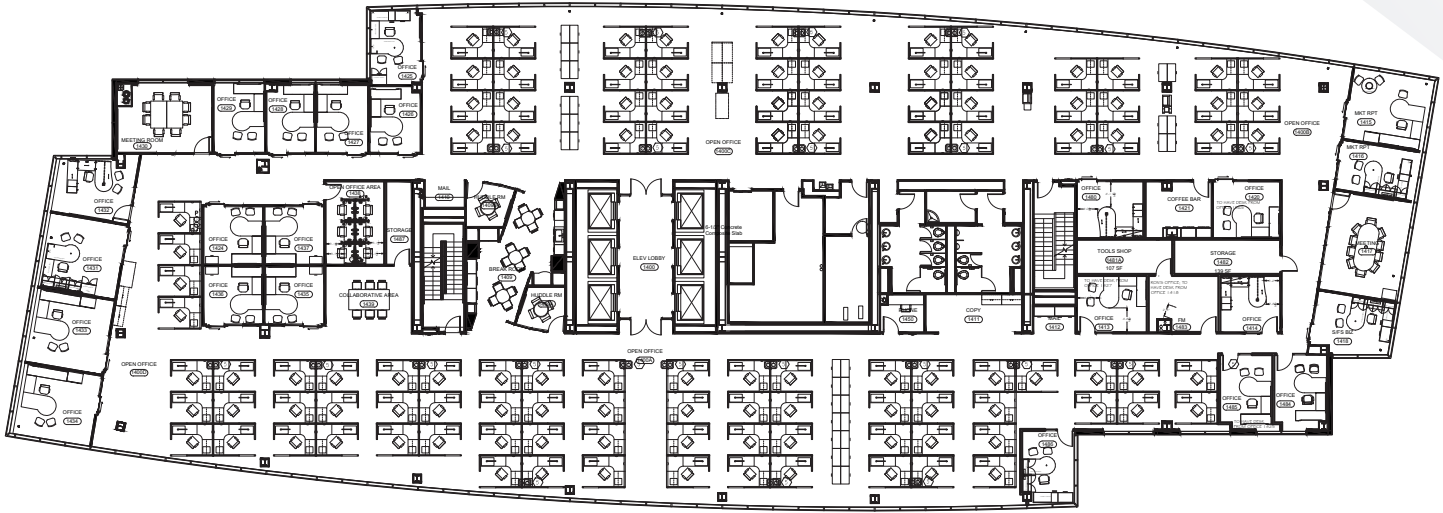
FOR SUBLEASE

# 550 South Caldwell St.



14th Floor - 23,007 SF

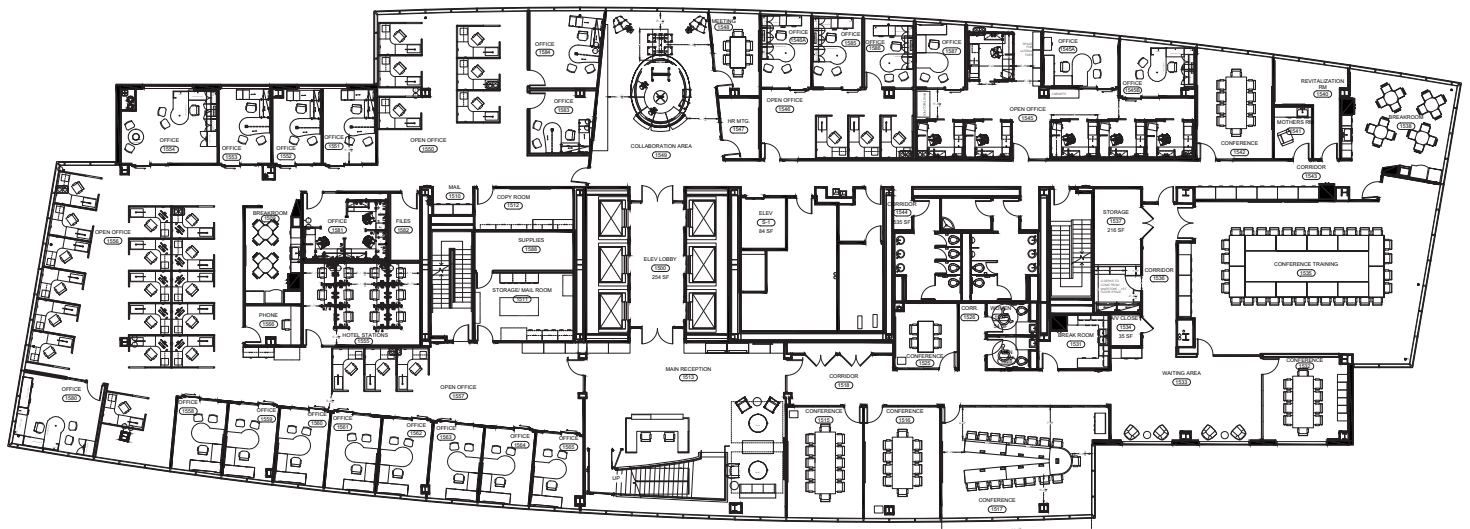
[Click for virtual tour](#)



15th Floor - 23,090 SF

*\*connected to 16th floor via internal stairwell*

[Click for virtual tour](#)



## Contact

KEITH BELL, SIOR  
+1 704 887 3036  
keith.bell@cushwake.com

ALEXANDRA WELLS  
+1 704 620 6122  
alexandra.wells@cushwake.com

FOR SUBLEASE

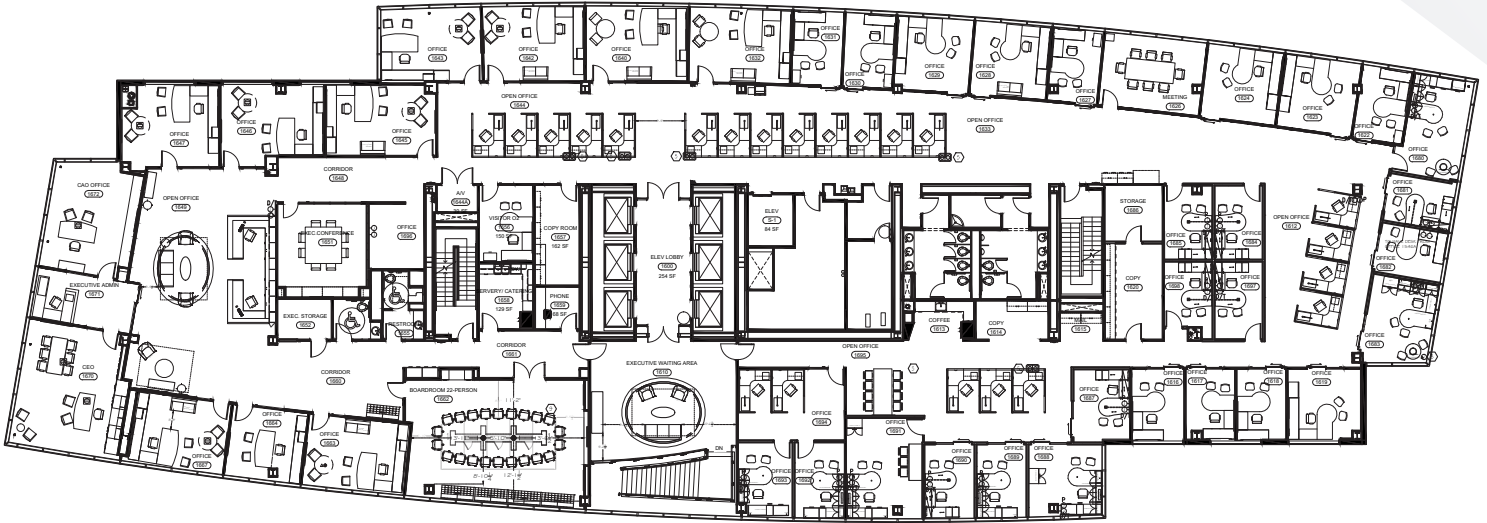
# 550 South Caldwell St.



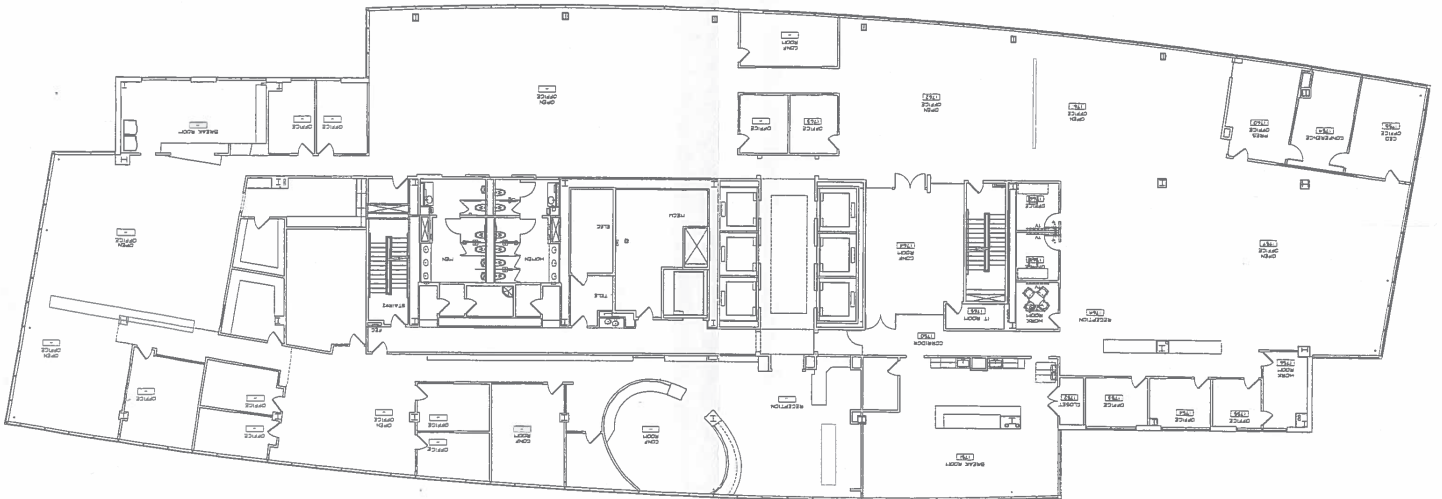
16th Floor - 23,174 SF

*\*connected to 15th floor via internal stairwell*

[Click for virtual tour](#)



17th Floor - 23,256 SF



## Contact

KEITH BELL, SIOR  
+1 704 887 3036  
keith.bell@cushwake.com

ALEXANDRA WELLS  
+1 704 620 6122  
alexandra.wells@cushwake.com