

# WOODLAND SEVEN

CORPORATE PARK

7676 Interactive Way,  
Indianapolis, IN

For Lease  
Class A Office  
New Construction

[www.woodlandcorporateparkseven.com](http://www.woodlandcorporateparkseven.com)



CUSHMAN &  
WAKEFIELD

Alidade  
Capital



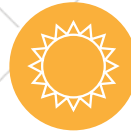
# PROPERTY FEATURES



Fitness Center  
with showers  
and lockers



New Tenant  
Social Hub



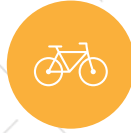
Outdoor  
courtyard



437 parking spaces  
with expansion



Divisible  
floorplates



Bicycle  
storage area



Secured  
access



5/1,000 SF  
parking ratio

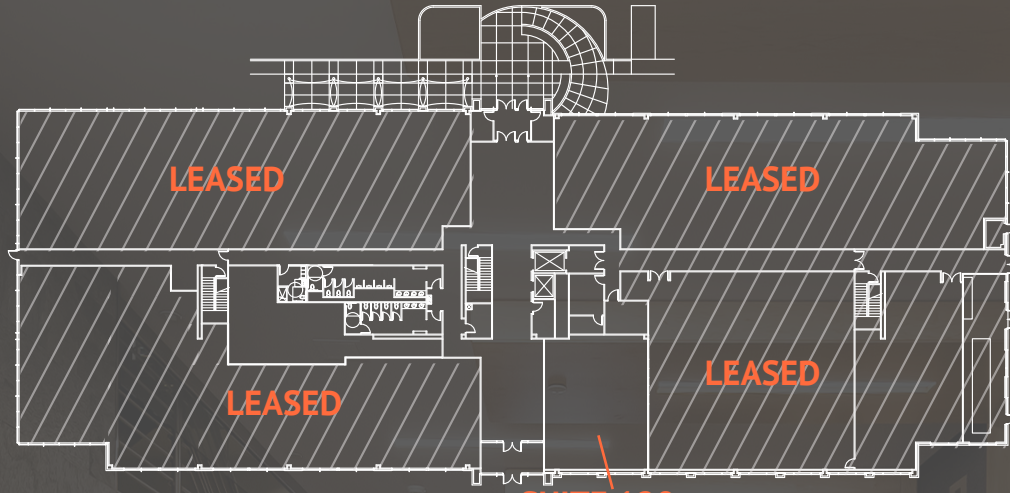


Approximately  
92,195 vehicles  
pass by daily



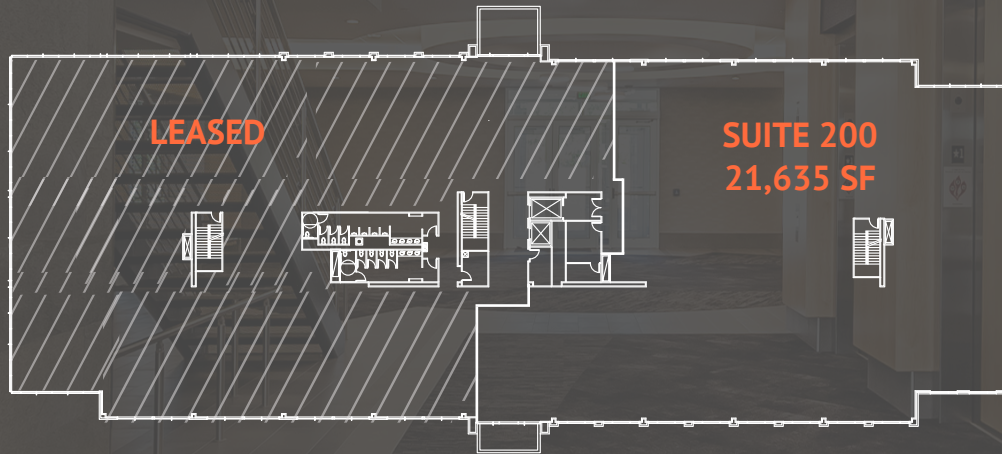
Woodland Corporate Park Seven is a Class A office building located in Northwest Indianapolis. With more than 118,000 SF, this brand new, high-quality shell offers the ability to customize the space. The efficient rectangular floor plates, large windows and I-465 visibility create a prime office space.

# FLOORPLANS



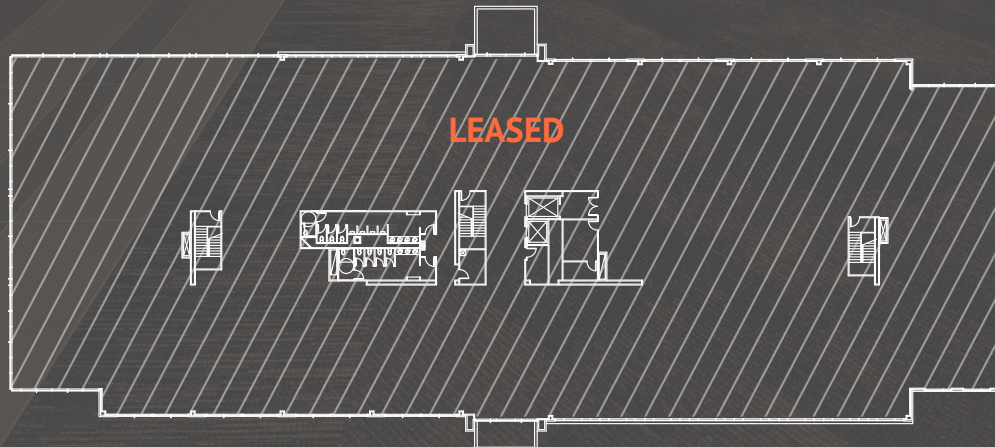
**First Floor**

**SUITE 120**  
**1,837 SF**



**Second Floor**

**SUITE 200**  
**21,635 SF**



**Third Floor**

# PROPERTY SPECS

4 power transformers

2,000 KWh, 400 AMP generator

Pads for 2 more generators

State-of-the-art systems

Data center

# LEED FEATURES

Geothermal HVAC unit that is 34% more efficient than code

Enhanced exterior glass

Energy efficient TPO roof

LED exterior lights

Water-efficient landscaping & plumbing features

Enhanced refrigerant management





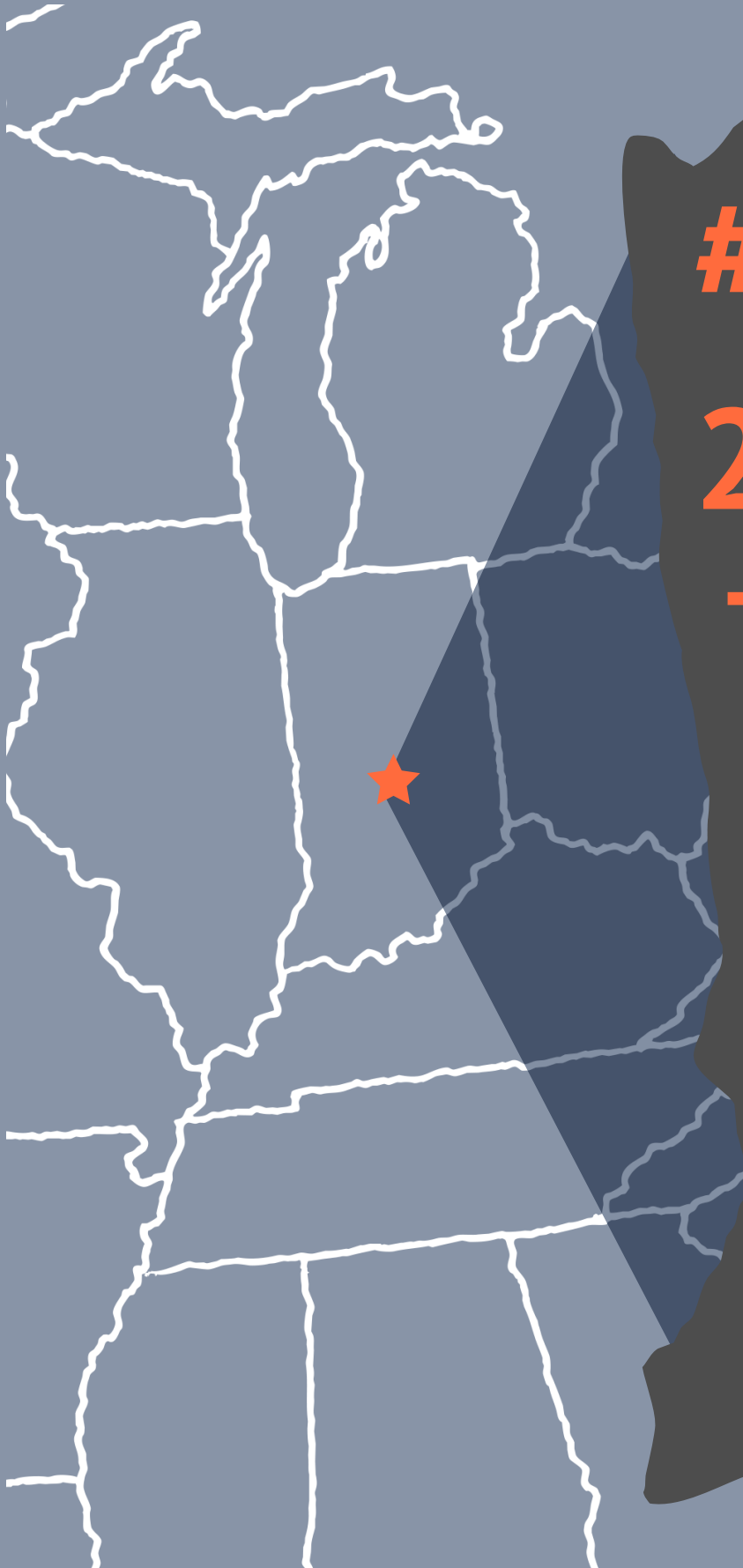
- Services
- Hotels
- Banks
- Restaurants

- 1. Concentra Urgent Care
- 2. Woodland Drive KinderCare
- 3. Wellfount Pharmacy
- 4. Day Early Learning
- 5. Dynamark Graphics Group
- 6. Custom Med Apothecary
- 7. Safedose Pharmacy
- 1. Candlewood Suites
- 2. Hampton Inn
- 3. Courtyard by Marriott
- 4. Best Western Plus
- 5. TownPlace Suites by Marriott
- 6. Hilton Garden Inn
- 7. Holiday Inn Express
- 8. Residence Inn by Marriott
- 9. Clarion Inn & Suites
- 1. BMO Harris Bank
- 2. FORUM Credit Union
- 3. Huntington Bank
- 4. Teachers Credit Union
- 1. Subway
- 2. McDonald's
- 3. Hardee's
- 4. Starbucks
- 5. HotBox Pizza
- 6. Jack's Donuts
- 7. LePeep

- 5604 W. 74th Street, Indianapolis, IN 46278
- 7221 Woodland Drive, Indianapolis, IN 46278
- 5751 W. 73rd Street, Indianapolis, IN 46278
- 5735 W. 73rd Street, Indianapolis, IN 46278
- 7210 Zionsville Road, Indianapolis, IN 46268
- 6005 W. 71st Street, Indianapolis, IN 46278
- 6970 Corporate Drive, Indianapolis, IN 46278
- 7455 Woodland Drive, Indianapolis, IN 46278
- 5860 W. 73rd Street, Indianapolis, IN 46278
- 7226 Woodland Drive, Indianapolis, IN 46278
- 7220 Woodland Drive, Indianapolis, IN 46278
- 5802 W. 71st Street, Indianapolis, IN 46278
- 6930 Intech Boulevard, Indianapolis, IN 46278
- 6240 Intech Commons Drive, Indianapolis, IN 46278
- 6220 Digital Way, Indianapolis, IN 46278
- 7001 Corporate Drive, Indianapolis, IN 46278
- 6410 Intech Commons Drive, Indianapolis, IN 46278
- 7023 Corporate Drive, Indianapolis, IN 46278
- 5605 W. 71st Street, Indianapolis, IN 46278
- 5130 W. 71st Street, Indianapolis, IN 46268
- 7118 Woodland Drive, Indianapolis, IN 46278
- 6056 W. 71st Street, Indianapolis, IN 46268
- 7217 Woodland Drive, Indianapolis, IN 46278
- 6320 Intech Commons Drive, Indianapolis, IN 46278
- 6260 Intech Commons Drive, Indianapolis, IN 46278
- 6260 Intech Commons Drive, Indianapolis, IN 46278
- 6335 Intech Commons Drive, Indianapolis, IN 46278

# WHY INDIANA

---



**#1**

Leading the nation in manufacturing jobs Indiana is #1 for total state share of manufacturing employment, and we're the only location in the U.S. with assembly plants for Honda, Subaru and Toyota inside a single state.

**2<sup>nd</sup>**

America's top states for business – infrastructure - CNBC 2018

**Top**

U.S. states for business  
- Chief Executive, 2018

**#1**

Most underrated city in the U.S., Indianapolis  
- Forbes, 2018

**#7**

America's favorite cities "Locals love how surprised and impressed visitors are by Indy, which has a beautiful canal and striking architecture. Other reasons to love this Midwest city? Affordable prices and a friendly, accessible vibe." – Travel+Leisure, 2017

**#1**

The best airports in the U.S.  
- Conde Nast Traveler



# WOODLAND SEVEN

CORPORATE PARK

**David A. Moore, SIOR, CCIM**  
Managing Director  
+1 317 639 0490  
david.moore@cushwake.com

**Darrin L. Boyd, SIOR, CCIM**  
Managing Director  
+1 317 590 8490  
darrin.boyd@cushwake.com

**Michael R. Semler, SIOR**  
Executive Director  
+1 317 639 0433  
michael.semler@cushwake.com

©2022 Cushman & Wakefield. All rights reserved. The information contained in this communication is strictly confidential. This information has been obtained from sources believed to be reliable but has not been verified. NO WARRANTY OR REPRESENTATION, EXPRESS OR IMPLIED, IS MADE AS TO THE CONDITION OF THE PROPERTY (OR PROPERTIES) REFERENCED HEREIN OR AS TO THE ACCURACY OR COMPLETENESS OF THE INFORMATION CONTAINED HEREIN, AND SAME IS SUBMITTED SUBJECT TO ERRORS, OMISSIONS, CHANGE OF PRICE, RENTAL OR OTHER CONDITIONS, WITHDRAWAL WITHOUT NOTICE, AND TO ANY SPECIAL LISTING CONDITIONS IMPOSED BY THE PROPERTY OWNER(S). ANY PROJECTIONS, OPINIONS OR ESTIMATES ARE SUBJECT TO UNCERTAINTY AND DO NOT SIGNIFY CURRENT OR FUTURE PROPERTY PERFORMANCE