

# 7977

CAPWELL DRIVE, OAKLAND



## OFFERINGS:

### FOR SALE

- ± 51,401 SF Parcel
- ± 10,610 RBA
- \$3,000,000

### PARTIAL INTEREST TRANSFER

- Tenancy in Common
- Exclusive Use of ± 4,480 RSF Freestanding Office Building (Building 200)
- ± 22,102 SF Site
- 43% Interest in Property
- \$1,300,000
- **Seller Financing Available**

### FOR LEASE

- ± 4,480 RSF Freestanding Office Building
- Available Immediately
- Rate: Inquire with Brokers



JAY HAGGLUND  
EXECUTIVE MANAGING DIRECTOR  
510 267 6011  
JAY.HAGGLUND@CUSHWAKE.COM  
LIC #00888011

CHARLIE MOORE  
DIRECTOR  
415 677 0438  
CHARLIE.MOORE@CUSHWAKE.COM  
LIC #01893023

JACKSON HAGGLUND  
SENIOR ASSOCIATE  
925 978 3142  
JACKSON.HAGGLUND@CUSHWAKE.COM  
LIC #02138597

# PROPERTY HIGHLIGHTS

- » ± 51,401 SF Parcel
- » ± 10,610 RBA
- » APN: 42-4430-1-4
- » 44 Parking Stalls
- » Built in 1978
- » Located in the Oakland Airport Business Park
- » Existing Solar on Building 100 - Fully Owned
- » Zoning: D-CO-5

[Click to View Zoning](#)



# BUILDING 100



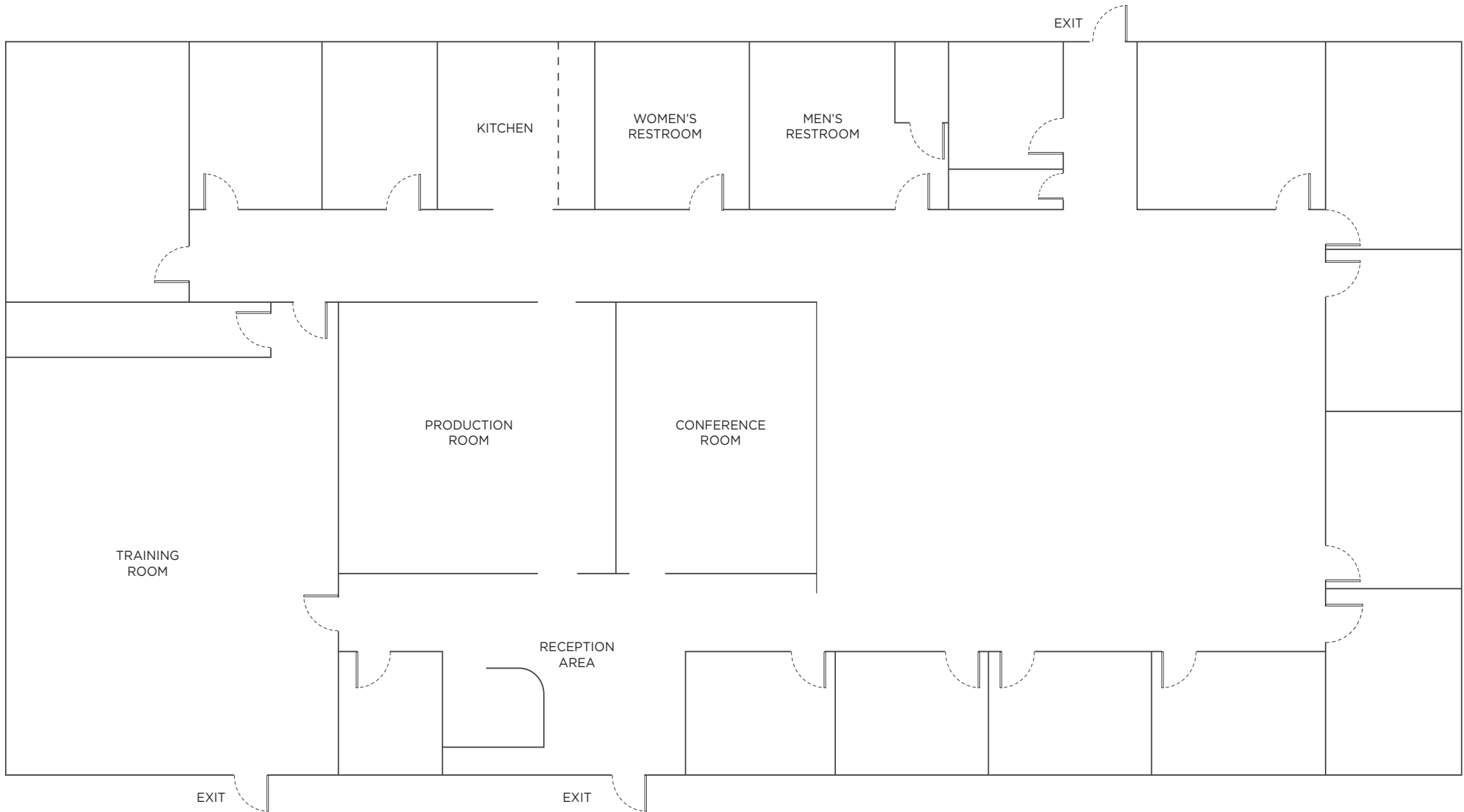
## HIGHLIGHTS:

- » ±6,130 RSF Office Building
- » Fully Leased Through 2029  
*Tenant Relocation is Possible*



# BUILDING 100

## FLOOR PLAN:



# BUILDING 200



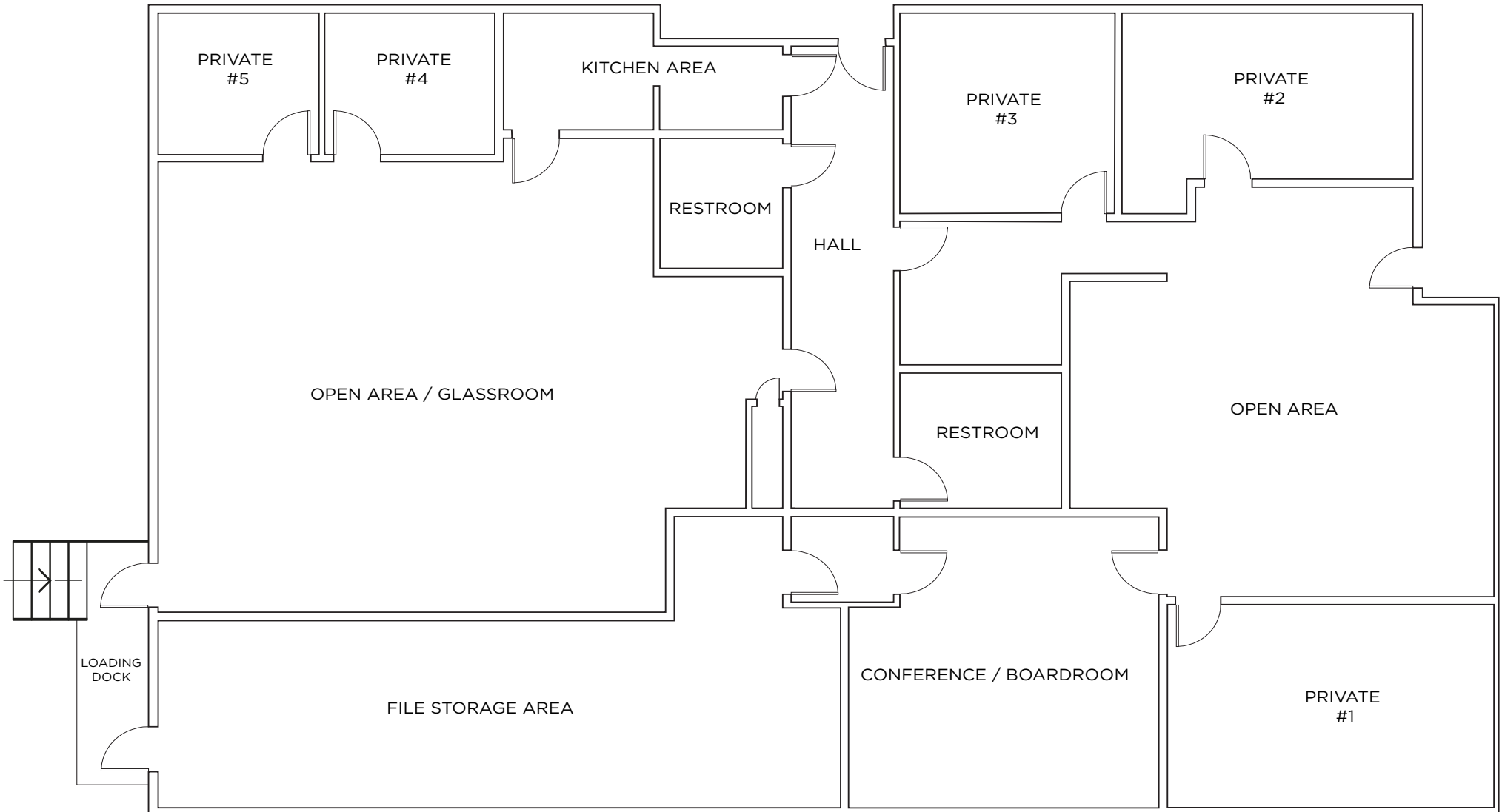
## HIGHLIGHTS:

- » ±4,480 RSF Office Building
- » Vacant and Available Immediately
- » Two (2) Large Open Areas, One (1) Conference Room, Three (3) Private Offices
- » Kitchenette
- » Loading Dock



# BUILDING 200

## FLOOR PLAN:





**JAY HAGGLUND**  
EXECUTIVE MANAGING DIRECTOR  
510 267 6011  
JAY.HAGGLUND@CUSHWAKE.COM  
LIC #00888011

**CHARLIE MOORE**  
DIRECTOR  
415 677 0438  
CHARLIE.MOORE@CUSHWAKE.COM  
LIC #01893023

**JACKSON HAGGLUND**  
SENIOR ASSOCIATE  
925 978 3142  
JACKSON.HAGGLUND@CUSHWAKE.COM  
LIC #02138597