

FOR SUBLEASE

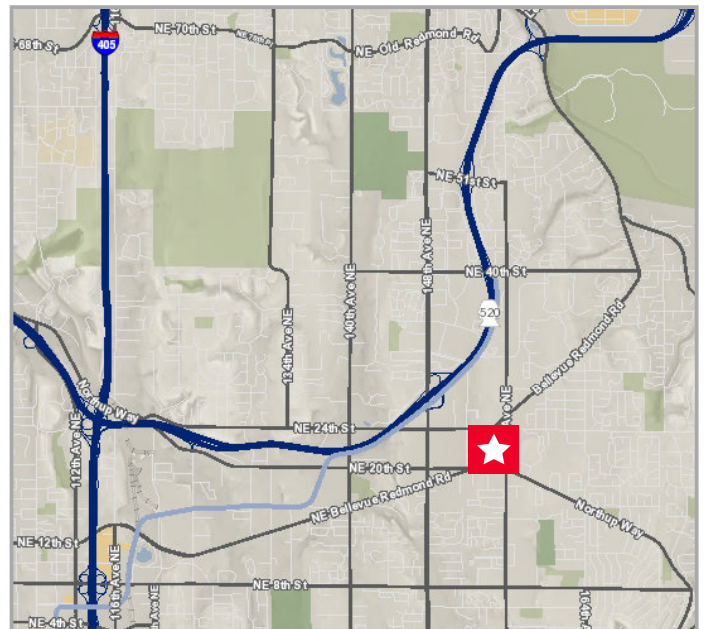


Forest Office Park Building G Suite 201

14715 Bel-Red Rd. Bellevue, Washington 98007



1,643 RSF AVAILABLE



Property Highlights

- Suite 201 - 1,643 rsf
- Lease expires December 21, 2023
- Available with 30 days notice
- 4/1,000 Parking Ratio
- On-Site Storage
- \$25.00/RSF Full Service

Brian Toy

Director
425 201 1224
Brian.Toy@cushwake.com

Taylor Hudson

Associate
425 201 1205
taylor.hudson@cushwake.com

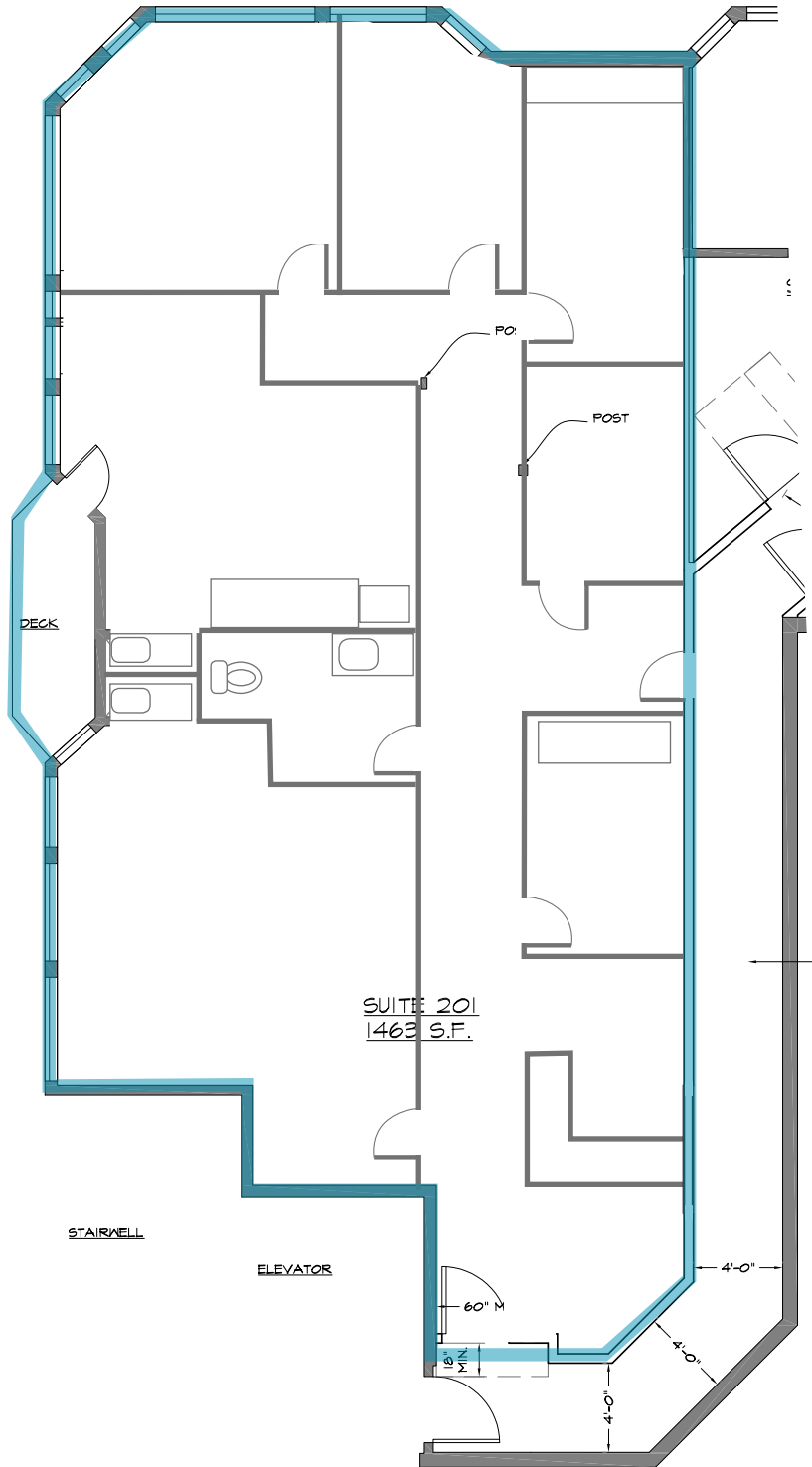
10500 NE 8th Street, Suite 1125
Bellevue, WA
Main +1 425 455 4500
Fax +1 425 453 5381
cushmanwakefield.com

FOR SUBLEASE



Forest Office Park Building G Suite 201

14715 Bel-Red Rd. Bellevue, Washington 98007



SUITE 201
1,643 RSF

Brian Toy
Director
425 201 1224
Brian.Toy@cushwake.com

Taylor Hudson
Associate
425 201 1205
taylor.hudson@cushwake.com

10500 NE 8th Street, Suite 1125
Bellevue, WA
Main +1 425 455 4500
Fax +1 425 453 5381
cushmanwakefield.com